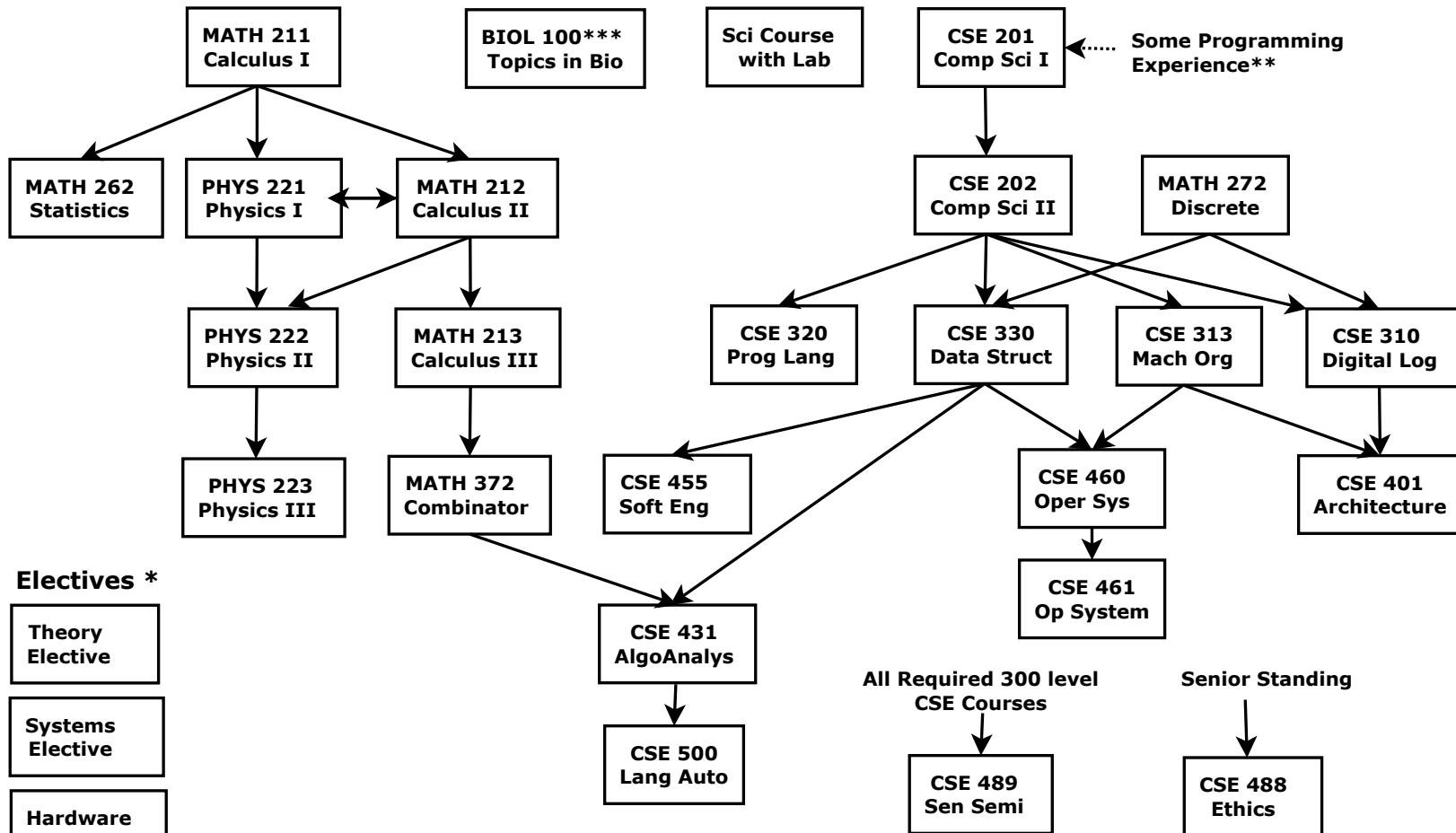
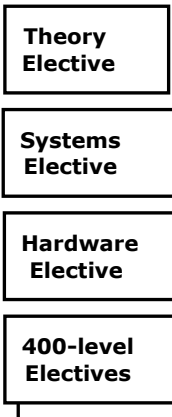


Bachelor of Science in Computer Science

Flowchart of Coursework -- Academic Years 2012/2013 - 2013/14



Electives *



*Electives (20 units):

1. Theory: 4 units chosen from CSE 501, CSE 511, CSE 512, CSE 515, CSE 535
2. Systems: 4 units chosen from CSE 540, CSE 565, CSE 570, CSE 572, CSE 580
3. Hardware: 4 units chosen from CSE 510, CSE 524, CSE 525, CSE 530, CSE 531
4. Free: 8 units chosen from 400- and above level courses not previously counted as electives

**Some Programming Experience or CSE 125 (Visual Basic)

*** BIOL 200 also acceptable but does not fulfill GE requirement B2 (life sciences)