

## Student Opinion of Teaching Effectiveness (SOTE)- College of Arts & Letters Winter 2016 Term Summary

### 1. Rate your interest in the subject matter of this course before you took the class.

	Response by Course Level			
	Lower	Upper	Grad	Total
Very High (1)	24.6%	38.2%	52.8%	30.2%
High (2)	26.4%	24.5%	20.9%	25.6%
Moderately High (3)	23.7%	19.9%	14.7%	22.1%
Moderately Low (4)	10.6%	8.3%	7.4%	9.7%
Low (5)	10.6%	6.4%	2.5%	8.9%
Very Low (6)	4.1%	2.7%	1.8%	3.6%
Mean	2.7	2.3	1.9	2.5
Median	2	2	1	2
Count	5542	3422	163	9127

### 2. How many class sessions did you attend?

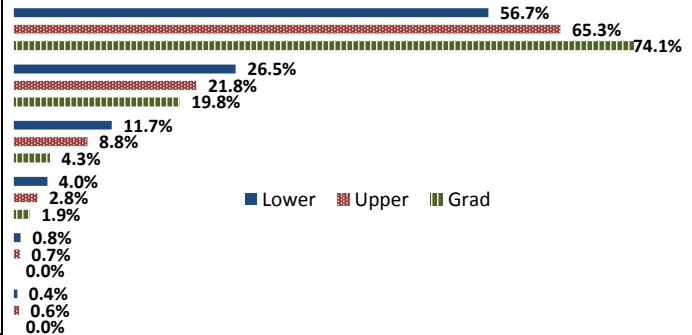
	Response by Course Level			
	Lower	Upper	Grad	Total
All (1)	48.3%	49.7%	57.1%	49.0%
Almost All (2)	47.6%	47.4%	42.9%	47.5%
More than Half (3)	3.6%	2.6%	0.0%	3.2%
Less than Half (4)	0.5%	0.2%	0.0%	0.4%
Mean	1.6	1.5	1.4	1.5
Median	1	1	1	1
Count	5547	3416	163	9126

### 3. Why did you take this course? Choose all that apply.

	Response by Course Level			
	Lower	Upper	Grad	Total
3a. The course fulfills a general education requirement.	74.2%	39.4%	34.3%	60.6%
3b. The course fulfills a requirement in my major.	21.7%	63.9%	68.7%	38.2%
3c. I have enjoyed the professor's class(es) in the past.	6.4%	14.9%	30.7%	10.0%
3d. The course will improve job/career opportunities.	14.8%	22.9%	31.3%	18.1%
3e. The course sounded interesting to me.	21.8%	35.5%	45.2%	27.3%

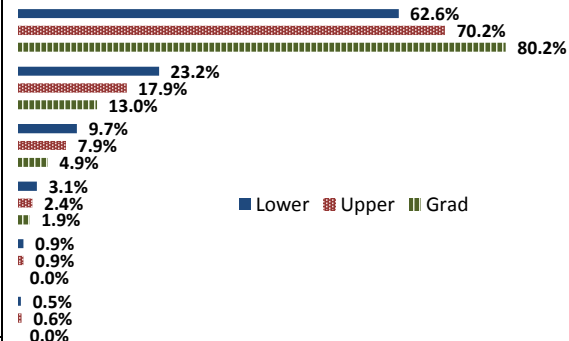
### 4. How would you rate the overall quality of instruction in this course?

	Response by Course Level			
	Lower	Upper	Grad	Total
Excellent (6)	56.7%	65.3%	74.1%	60.2%
Very Good (5)	26.5%	21.8%	19.8%	24.6%
Good (4)	11.7%	8.8%	4.3%	10.5%
Fair (3)	4.0%	2.8%	1.9%	3.5%
Poor (2)	0.8%	0.7%	0.0%	0.7%
Unsatisfactory (1)	0.4%	0.6%	0.0%	0.4%
Mean	5.3	5.5	5.7	5.4
Median	6	6	6	6
Count	5582	3401	162	9145



### 5. How would you rate your professor's specific contribution to you learning in this course?

	Response by Course Level			
	Lower	Upper	Grad	Total
Excellent (6)	62.6%	70.2%	80.2%	65.8%
Very Good (5)	23.2%	17.9%	13.0%	21.1%
Good (4)	9.7%	7.9%	4.9%	8.9%
Fair (3)	3.1%	2.4%	1.9%	2.8%
Poor (2)	0.9%	0.9%	0.0%	0.9%
Unsatisfactory (1)	0.5%	0.6%	0.0%	0.5%
Mean	5.4	5.5	5.7	5.5
Median	6	6	6	6
Count	5517	3398	162	9077



# Student Opinion of Teaching Effectiveness (SOTE)- College of Business and Public Administration Winter 2016 Term Summary

## 1. Rate your interest in the subject matter of this course before you took the class.

	Response by Course Level			
	Lower	Upper	Grad	Total
Very High (1)	19.4%	31.1%	34.8%	29.0%
High (2)	25.1%	27.3%	27.4%	26.8%
Moderately High (3)	24.2%	22.5%	18.5%	22.3%
Moderately Low (4)	12.4%	9.7%	10.0%	10.4%
Low (5)	13.1%	6.4%	6.5%	7.9%
Very Low (6)	5.8%	3.0%	2.8%	3.6%
Mean	2.9	2.4	2.3	2.5
Median	3	2	2	2
Count	972	2916	569	4457

## 2. How many class sessions did you attend?

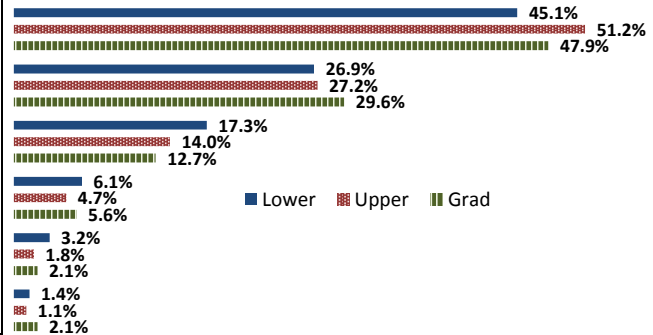
	Response by Course Level			
	Lower	Upper	Grad	Total
All (1)	58.9%	57.1%	75.0%	59.8%
Almost All (2)	36.1%	40.5%	23.1%	37.3%
More than Half (3)	3.6%	1.9%	1.2%	2.2%
Less than Half (4)	1.3%	0.5%	0.7%	0.7%
Mean	1.5	1.5	1.3	1.4
Median	1	1	1	1
Count	967	2907	567	4441

## 3. Why did you take this course? Choose all that apply.

	Response by Course Level			
	Lower	Upper	Grad	Total
3a. The course fulfills a general education requirement.	42.1%	24.6%	38.6%	30.2%
3b. The course fulfills a requirement in my major.	67.8%	81.3%	72.5%	77.3%
3c. I have enjoyed the professor's class(es) in the past.	2.4%	6.4%	9.9%	6.0%
3d. The course will improve job/career opportunities.	22.2%	26.2%	30.4%	25.9%
3e. The course sounded interesting to me.	14.8%	17.1%	14.3%	16.2%

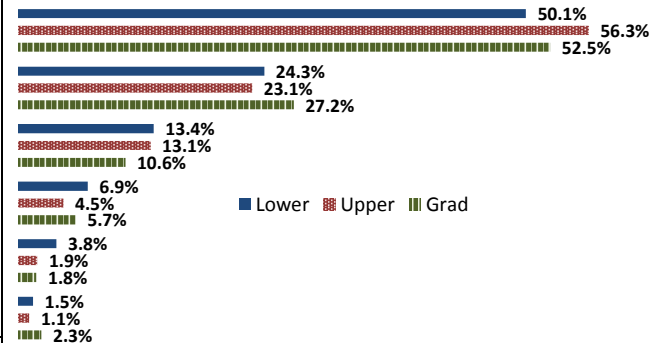
## 4. How would you rate the overall quality of instruction in this course?

	Response by Course Level			
	Lower	Upper	Grad	Total
Excellent (6)	45.1%	51.2%	47.9%	49.5%
Very Good (5)	26.9%	27.2%	29.6%	27.4%
Good (4)	17.3%	14.0%	12.7%	14.5%
Fair (3)	6.1%	4.7%	5.6%	5.1%
Poor (2)	3.2%	1.8%	2.1%	2.2%
Unsatisfactory (1)	1.4%	1.1%	2.1%	1.3%
Mean	5.0	5.2	5.1	5.1
Median	5	6	5	5
Count	973	2922	574	4469



## 5. How would you rate your professor's specific contribution to you learning in this course?

	Response by Course Level			
	Lower	Upper	Grad	Total
Excellent (6)	50.1%	56.3%	52.5%	54.4%
Very Good (5)	24.3%	23.1%	27.2%	23.9%
Good (4)	13.4%	13.1%	10.6%	12.8%
Fair (3)	6.9%	4.5%	5.7%	5.2%
Poor (2)	3.8%	1.9%	1.8%	2.3%
Unsatisfactory (1)	1.5%	1.1%	2.3%	1.4%
Mean	5.1	5.2	5.2	5.2
Median	6	6	6	6
Count	969	2890	566	4425



## Student Opinion of Teaching Effectiveness (SOTE)- College of Education Winter 2016 Term Summary

### 1. Rate your interest in the subject matter of this course before you took the class.

	Response by Course Level			
	Lower	Upper	Grad	Total
Very High (1)	34.5%	40.4%	43.5%	41.8%
High (2)	37.9%	29.4%	28.8%	29.5%
Moderately High (3)	13.8%	17.9%	16.1%	16.8%
Moderately Low (4)	3.4%	6.6%	4.8%	5.5%
Low (5)	8.6%	4.1%	4.8%	4.6%
Very Low (6)	1.7%	1.5%	2.0%	1.8%
Mean	2.2	2.1	2.0	2.1
Median	2	2	2	2
Count	58	653	735	1446

### 2. How many class sessions did you attend?

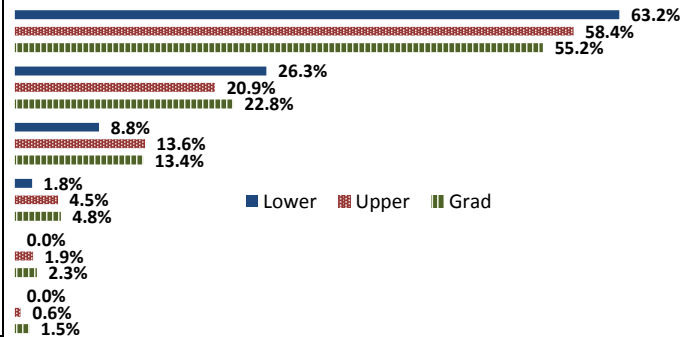
	Response by Course Level			
	Lower	Upper	Grad	Total
All (1)	81.0%	82.9%	74.4%	78.5%
Almost All (2)	17.2%	17.1%	24.7%	21.0%
More than Half (3)	0.0%	0.0%	0.5%	0.3%
Less than Half (4)	1.7%	0.0%	0.4%	0.3%
Mean	1.2	1.2	1.3	1.2
Median	1	1	1	1
Count	58	651	742	1451

### 3. Why did you take this course? Choose all that apply.

	Response by Course Level			
	Lower	Upper	Grad	Total
3a. The course fulfills a general education requirement.	33.3%	32.9%	26.0%	29.4%
3b. The course fulfills a requirement in my major.	76.7%	73.8%	84.5%	79.4%
3c. I have enjoyed the professor's class(es) in the past.	11.7%	12.3%	15.9%	14.1%
3d. The course will improve job/career opportunities.	25.0%	35.9%	34.1%	34.6%
3e. The course sounded interesting to me.	28.3%	11.7%	14.3%	13.7%

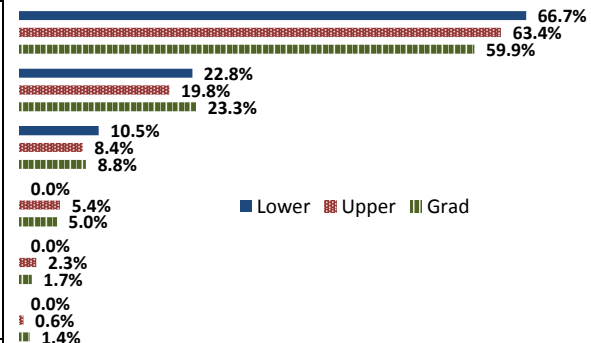
### 4. How would you rate the overall quality of instruction in this course?

	Response by Course Level			
	Lower	Upper	Grad	Total
Excellent (6)	63.2%	58.4%	55.2%	57.0%
Very Good (5)	26.3%	20.9%	22.8%	22.1%
Good (4)	8.8%	13.6%	13.4%	13.3%
Fair (3)	1.8%	4.5%	4.8%	4.6%
Poor (2)	0.0%	1.9%	2.3%	2.0%
Unsatisfactory (1)	0.0%	0.6%	1.5%	1.0%
Mean	5.5	5.3	5.2	5.2
Median	6	6	6	6
Count	57	640	746	1443



### 5. How would you rate your professor's specific contribution to you learning in this course?

	Response by Course Level			
	Lower	Upper	Grad	Total
Excellent (6)	66.7%	63.4%	59.9%	61.7%
Very Good (5)	22.8%	19.8%	23.3%	21.7%
Good (4)	10.5%	8.4%	8.8%	8.6%
Fair (3)	0.0%	5.4%	5.0%	5.0%
Poor (2)	0.0%	2.3%	1.7%	1.9%
Unsatisfactory (1)	0.0%	0.6%	1.4%	1.0%
Mean	5.6	5.3	5.3	5.3
Median	6	6	6	6
Count	57	645	720	1422



## Student Opinion of Teaching Effectiveness (SOTE)- College of Natural Sciences Winter 2016 Term Summary

### 1. Rate your interest in the subject matter of this course before you took the class.

	Response by Course Level			
	Lower	Upper	Grad	Total
Very High (1)	23.8%	35.4%	31.7%	28.1%
High (2)	26.3%	26.2%	36.6%	26.3%
Moderately High (3)	21.6%	19.5%	14.9%	20.8%
Moderately Low (4)	10.8%	8.5%	5.9%	9.9%
Low (5)	11.1%	7.1%	7.9%	9.6%
Very Low (6)	6.5%	3.2%	3.0%	5.3%
Mean	2.8	2.4	2.3	2.6
Median	2	2	2	2
Count	7520	4399	101	12020

### 2. How many class sessions did you attend?

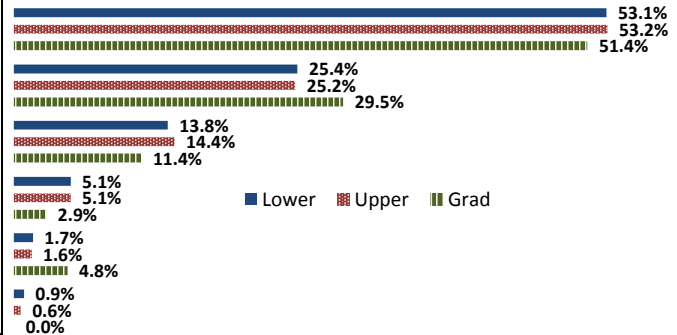
	Response by Course Level			
	Lower	Upper	Grad	Total
All (1)	63.8%	63.4%	65.3%	63.7%
Almost All (2)	33.1%	34.2%	28.7%	33.5%
More than Half (3)	2.6%	2.1%	4.0%	2.4%
Less than Half (4)	0.5%	0.3%	2.0%	0.5%
Mean	1.4	1.4	1.4	1.4
Median	1	1	1	1
Count	7523	4371	101	11995

### 3. Why did you take this course? Choose all that apply.

	Response by Course Level			
	Lower	Upper	Grad	Total
3a. The course fulfills a general education requirement.	53.9%	25.8%	29.3%	43.5%
3b. The course fulfills a requirement in my major.	50.0%	77.8%	56.9%	60.1%
3c. I have enjoyed the professor's class(es) in the past.	4.3%	11.2%	16.3%	6.9%
3d. The course will improve job/career opportunities.	12.2%	21.4%	13.8%	15.5%
3e. The course sounded interesting to me.	16.1%	20.5%	17.9%	17.7%

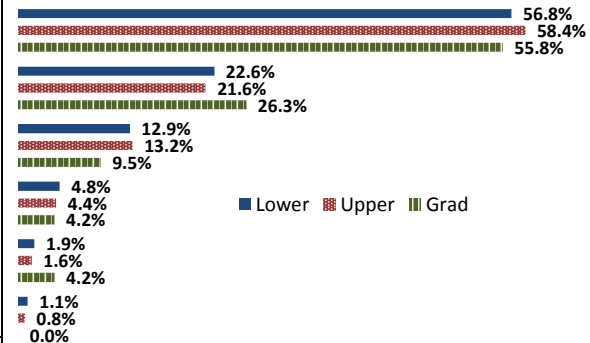
### 4. How would you rate the overall quality of instruction in this course?

	Response by Course Level			
	Lower	Upper	Grad	Total
Excellent (6)	53.1%	53.2%	51.4%	53.1%
Very Good (5)	25.4%	25.2%	29.5%	25.4%
Good (4)	13.8%	14.4%	11.4%	14.0%
Fair (3)	5.1%	5.1%	2.9%	5.1%
Poor (2)	1.7%	1.6%	4.8%	1.7%
Unsatisfactory (1)	0.9%	0.6%	0.0%	0.8%
Mean	5.2	5.2	5.2	5.2
Median	6	6	6	6
Count	7549	4381	105	12035



### 5. How would you rate your professor's specific contribution to you learning in this course?

	Response by Course Level			
	Lower	Upper	Grad	Total
Excellent (6)	56.8%	58.4%	55.8%	57.4%
Very Good (5)	22.6%	21.6%	26.3%	22.3%
Good (4)	12.9%	13.2%	9.5%	13.0%
Fair (3)	4.8%	4.4%	4.2%	4.6%
Poor (2)	1.9%	1.6%	4.2%	1.8%
Unsatisfactory (1)	1.1%	0.8%	0.0%	1.0%
Mean	5.2	5.3	5.3	5.3
Median	6	6	6	6
Count	7499	4386	95	11980



# Student Opinion of Teaching Effectiveness (SOTE)- College of Social and Behavioral Sciences Winter 2016 Term Summary

## 1. Rate your interest in the subject matter of this course before you took the class.

	Response by Course Level			
	Lower	Upper	Grad	Total
Very High (1)	18.3%	32.6%	39.2%	27.6%
High (2)	25.2%	27.7%	27.2%	26.7%
Moderately High (3)	24.2%	18.5%	16.9%	20.6%
Moderately Low (4)	12.3%	8.5%	7.6%	9.9%
Low (5)	13.9%	8.5%	6.5%	10.4%
Very Low (6)	6.1%	4.2%	2.5%	4.8%
Mean	3.0	2.5	2.2	2.6
Median	3	2	2	2
Count	3953	5811	602	10366

## 2. How many class sessions did you attend?

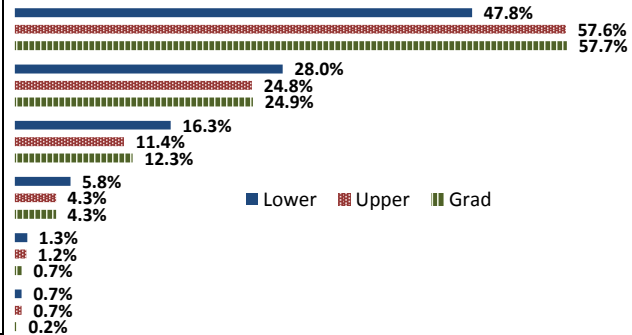
	Response by Course Level			
	Lower	Upper	Grad	Total
All (1)	52.3%	53.4%	58.1%	53.3%
Almost All (2)	42.8%	42.8%	40.9%	42.7%
More than Half (3)	4.1%	3.2%	0.8%	3.4%
Less than Half (4)	0.8%	0.6%	0.2%	0.6%
Mean	1.5	1.5	1.4	1.5
Median	1	1	1	1
Count	3972	5814	602	10388

## 3. Why did you take this course? Choose all that apply.

	Response by Course Level			
	Lower	Upper	Grad	Total
3a. The course fulfills a general education requirement.	66.4%	32.3%	31.9%	45.9%
3b. The course fulfills a requirement in my major.	27.0%	69.8%	79.9%	53.3%
3c. I have enjoyed the professor's class(es) in the past.	3.3%	13.4%	14.4%	9.4%
3d. The course will improve job/career opportunities.	9.6%	20.5%	29.1%	16.6%
3e. The course sounded interesting to me.	18.1%	33.4%	20.1%	26.5%

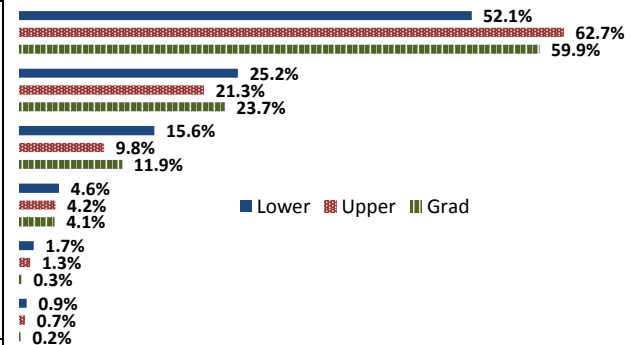
## 4. How would you rate the overall quality of instruction in this course?

	Response by Course Level			
	Lower	Upper	Grad	Total
Excellent (6)	47.8%	57.6%	57.7%	53.9%
Very Good (5)	28.0%	24.8%	24.9%	26.0%
Good (4)	16.3%	11.4%	12.3%	13.3%
Fair (3)	5.8%	4.3%	4.3%	4.9%
Poor (2)	1.3%	1.2%	0.7%	1.2%
Unsatisfactory (1)	0.7%	0.7%	0.2%	0.7%
Mean	5.1	5.3	5.3	5.2
Median	5	6	6	6
Count	3961	5841	610	10412



## 5. How would you rate your professor's specific contribution to you learning in this course?

	Response by Course Level			
	Lower	Upper	Grad	Total
Excellent (6)	52.1%	62.7%	59.9%	58.5%
Very Good (5)	25.2%	21.3%	23.7%	22.9%
Good (4)	15.6%	9.8%	11.9%	12.1%
Fair (3)	4.6%	4.2%	4.1%	4.3%
Poor (2)	1.7%	1.3%	0.3%	1.4%
Unsatisfactory (1)	0.9%	0.7%	0.2%	0.7%
Mean	5.2	5.4	5.4	5.3
Median	6	6	6	6
Count	3948	5808	613	10369



## Student Opinion of Teaching Effectiveness (SOTE)- College of University Studies Winter 2016 Term Summary

### 1. Rate your interest in the subject matter of this course before you took the class.

	Response by Course Level			
	Lower	Upper	Grad	Total
Very High (1)	24.6%	0.0%	0.0%	24.6%
High (2)	24.2%	0.0%	0.0%	24.2%
Moderately High (3)	20.4%	0.0%	0.0%	20.4%
Moderately Low (4)	10.0%	0.0%	0.0%	10.0%
Low (5)	13.7%	0.0%	0.0%	13.7%
Very Low (6)	7.1%	0.0%	0.0%	7.1%
Mean	2.9	N/A	N/A	2.9
Median	3	N/A	N/A	3
Count	211	0	0	211

### 2. How many class sessions did you attend?

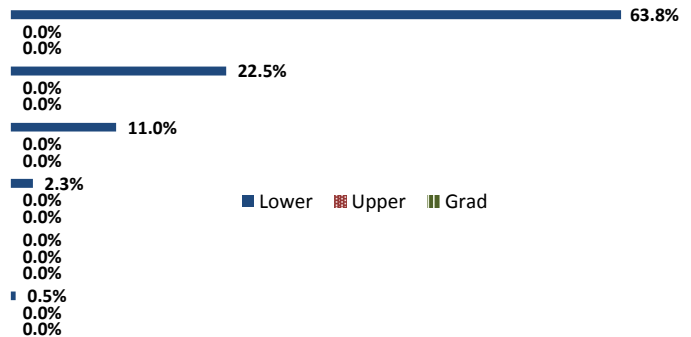
	Response by Course Level			
	Lower	Upper	Grad	Total
All (1)	44.1%	0.0%	0.0%	44.1%
Almost All (2)	53.5%	0.0%	0.0%	53.5%
More than Half (3)	2.3%	0.0%	0.0%	2.3%
Less than Half (4)	0.0%	0.0%	0.0%	0.0%
Mean	1.6	N/A	N/A	1.6
Median	2	N/A	N/A	2
Count	213	0	0	213

### 3. Why did you take this course? Choose all that apply.

	Response by Course Level			
	Lower	Upper	Grad	Total
3a. The course fulfills a general education requirement.	51.5%	0.0%	0.0%	51.5%
3b. The course fulfills a requirement in my major.	11.0%	0.0%	0.0%	11.0%
3c. I have enjoyed the professor's class(es) in the past.	1.8%	0.0%	0.0%	1.8%
3d. The course will improve job/career opportunities.	8.4%	0.0%	0.0%	8.4%
3e. The course sounded interesting to me.	22.9%	0.0%	0.0%	22.9%

### 4. How would you rate the overall quality of instruction in this course?

	Response by Course Level			
	Lower	Upper	Grad	Total
Excellent (6)	63.8%	0.0%	0.0%	63.8%
Very Good (5)	22.5%	0.0%	0.0%	22.5%
Good (4)	11.0%	0.0%	0.0%	11.0%
Fair (3)	2.3%	0.0%	0.0%	2.3%
Poor (2)	0.0%	0.0%	0.0%	0.0%
Unsatisfactory (1)	0.5%	0.0%	0.0%	0.5%
Mean	5.5	N/A	N/A	5.5
Median	6	N/A	N/A	6
Count	218	0	0	218



### 5. How would you rate your professor's specific contribution to you learning in this course?

	Response by Course Level			
	Lower	Upper	Grad	Total
Excellent (6)	70.8%	0.0%	0.0%	70.8%
Very Good (5)	16.9%	0.0%	0.0%	16.9%
Good (4)	9.6%	0.0%	0.0%	9.6%
Fair (3)	1.8%	0.0%	0.0%	1.8%
Poor (2)	0.5%	0.0%	0.0%	0.5%
Unsatisfactory (1)	0.5%	0.0%	0.0%	0.5%
Mean	5.5	N/A	N/A	5.5
Median	6	N/A	N/A	6
Count	219	0	0	219

