

## Student Opinion of Teaching Effectiveness (SOTE)- College of Arts & Letters Winter 2018 Term Summary

**1. Rate your interest in the subject matter of this course before you took the class.**

	Response by Course Level			
	Lower	Upper	Grad	Total
Very High (1)	24.4%	38.5%	53.3%	30.8%
High (2)	25.5%	25.6%	15.2%	25.4%
Moderately High (3)	20.9%	18.3%	10.5%	19.7%
Moderately Low (4)	11.0%	7.5%	11.4%	9.6%
Low (5)	11.4%	7.1%	5.7%	9.5%
Very Low (6)	6.7%	3.0%	3.8%	5.1%
Mean	2.8	2.3	2.1	2.6
Median	3	2	1	2
Count	3622	2678	105	6405

**2. How many class sessions did you attend?**

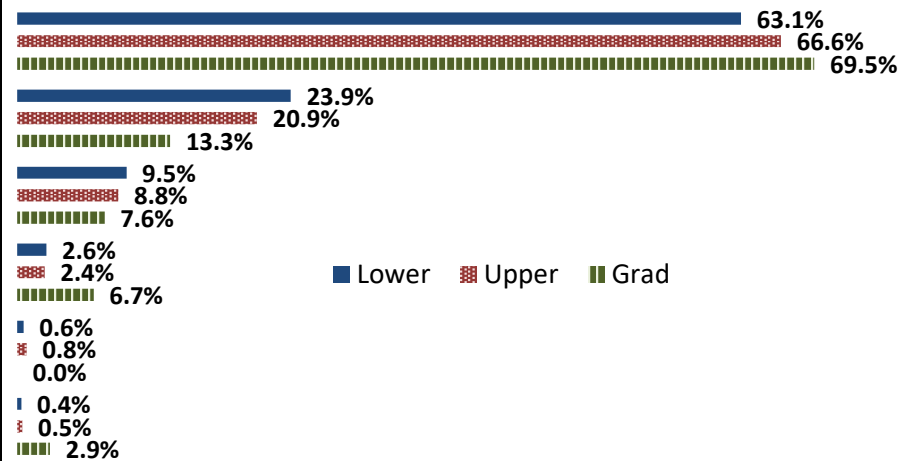
	Response by Course Level			
	Lower	Upper	Grad	Total
All (1)	44.9%	44.3%	49.0%	44.7%
Almost All (2)	50.9%	52.2%	51.0%	51.4%
More than Half (3)	3.7%	3.0%	0.0%	3.4%
Less than Half (4)	0.5%	0.5%	0.0%	0.5%
Mean	1.6	1.6	1.5	1.6
Median	2	2	2	2
Count	3623	2677	102	6402

**3. Why did you take this course? Choose all that apply.**

	Response by Course Level			
	Lower	Upper	Grad	Total
3a. The course fulfills a general education requirement.	73.5%	40.7%	36.7%	59.3%
3b. The course fulfills a requirement in my major.	21.2%	63.0%	75.2%	39.4%
3c. I have enjoyed the professor's class(es) in the past.	4.5%	12.8%	21.1%	8.2%
3d. The course will improve job/career opportunities.	12.9%	21.7%	25.7%	16.7%
3e. The course sounded interesting to me.	23.0%	31.9%	35.8%	26.9%

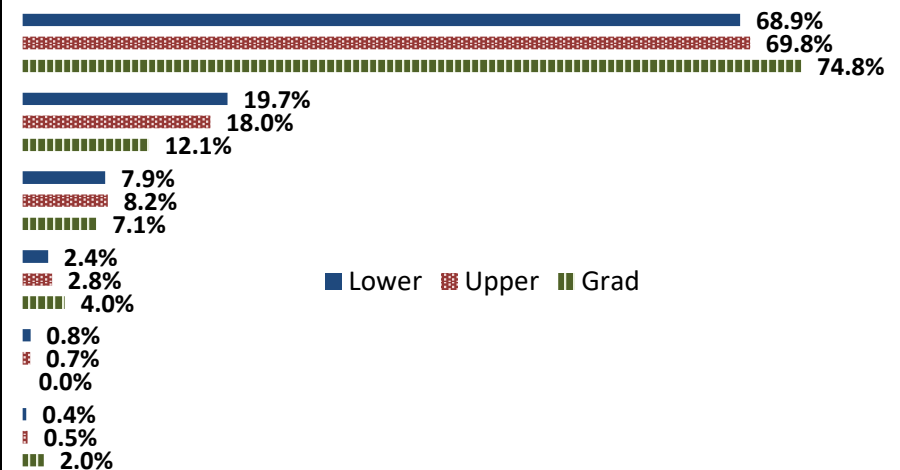
**4. How would you rate the overall quality of instruction in this course?**

	Response by Course Level			
	Lower	Upper	Grad	Total
Excellent (6)	63.1%	66.6%	69.5%	64.7%
Very Good (5)	23.9%	20.9%	13.3%	22.5%
Good (4)	9.5%	8.8%	7.6%	9.2%
Fair (3)	2.6%	2.4%	6.7%	2.6%
Poor (2)	0.6%	0.8%	0.0%	0.7%
Unsatisfactory (1)	0.4%	0.5%	2.9%	0.4%
Mean	5.5	5.5	5.4	5.5
Median	6	6	6	6
Count	3642	2665	105	6412



**5. How would you rate your professor's specific contribution to your learning in this course?**

	Response by Course Level			
	Lower	Upper	Grad	Total
Excellent (6)	68.9%	69.8%	74.8%	69.4%
Very Good (5)	19.7%	18.0%	12.1%	18.9%
Good (4)	7.9%	8.2%	7.1%	8.0%
Fair (3)	2.4%	2.8%	4.0%	2.6%
Poor (2)	0.8%	0.7%	0.0%	0.7%
Unsatisfactory (1)	0.4%	0.5%	2.0%	0.4%
Mean	5.5	5.5	5.5	5.5
Median	6	6	6	6
Count	3623	2673	99	6395



# Student Opinion of Teaching Effectiveness (SOTE)- College of Business and Public Administration Winter 2018 Term Summary

**1. Rate your interest in the subject matter of this course before you took the class.**

	Response by Course Level			
	Lower	Upper	Grad	Total
Very High (1)	24.5%	31.8%	29.7%	30.2%
High (2)	25.2%	30.0%	33.2%	29.2%
Moderately High (3)	21.4%	18.0%	21.0%	18.9%
Moderately Low (4)	12.3%	9.2%	6.7%	9.7%
Low (5)	12.0%	7.4%	6.4%	8.3%
Very Low (6)	4.7%	3.6%	2.9%	3.8%
Mean	2.8	2.4	2.4	2.5
Median	3	2	2	2
Count	978	3388	343	4709

**2. How many class sessions did you attend?**

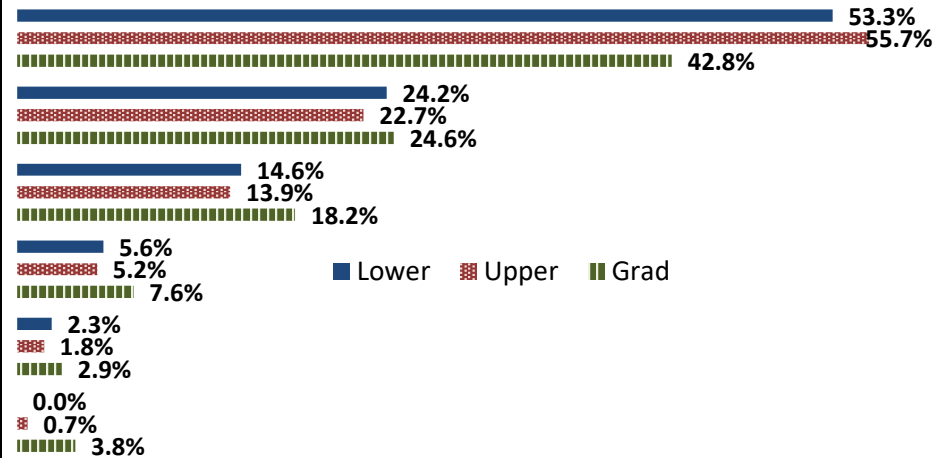
	Response by Course Level			
	Lower	Upper	Grad	Total
All (1)	58.5%	57.1%	60.7%	57.7%
Almost All (2)	37.6%	40.0%	37.8%	39.4%
More than Half (3)	3.6%	2.5%	0.6%	2.6%
Less than Half (4)	0.3%	0.4%	0.9%	0.4%
Mean	1.5	1.5	1.4	1.5
Median	1	1	1	1
Count	997	3404	328	4729

**3. Why did you take this course? Choose all that apply.**

	Response by Course Level			
	Lower	Upper	Grad	Total
3a. The course fulfills a general education requirement.	38.6%	27.8%	39.1%	30.9%
3b. The course fulfills a requirement in my major.	60.6%	78.0%	71.1%	73.8%
3c. I have enjoyed the professor's class(es) in the past.	4.4%	7.1%	5.7%	6.4%
3d. The course will improve job/career opportunities.	20.5%	24.4%	26.3%	23.7%
3e. The course sounded interesting to me.	18.0%	16.6%	13.4%	16.7%

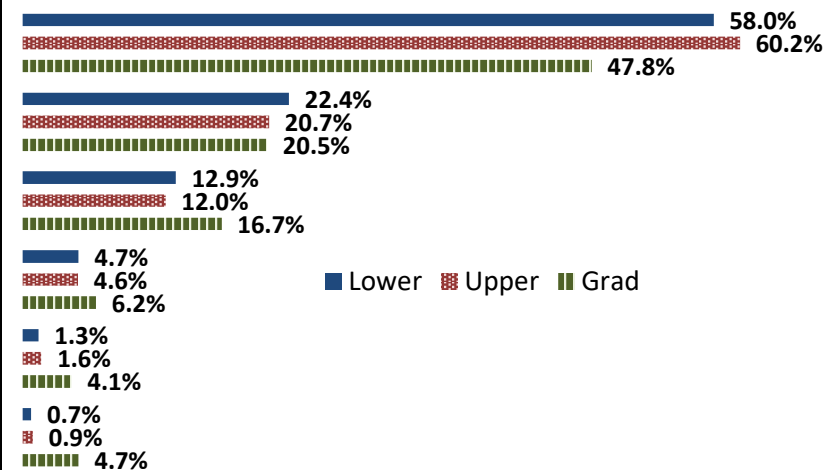
**4. How would you rate the overall quality of instruction in this course?**

	Response by Course Level			
	Lower	Upper	Grad	Total
Excellent (6)	53.3%	55.7%	42.8%	54.3%
Very Good (5)	24.2%	22.7%	24.6%	23.1%
Good (4)	14.6%	13.9%	18.2%	14.4%
Fair (3)	5.6%	5.2%	7.6%	5.5%
Poor (2)	2.3%	1.8%	2.9%	2.0%
Unsatisfactory (1)	0.0%	0.7%	3.8%	0.8%
Mean	5.2	5.2	4.9	5.2
Median	6	6	5	6
Count	977	3345	341	4663



**5. How would you rate your professor's specific contribution to your learning in this course?**

	Response by Course Level			
	Lower	Upper	Grad	Total
Excellent (6)	58.0%	60.2%	47.8%	58.9%
Very Good (5)	22.4%	20.7%	20.5%	21.0%
Good (4)	12.9%	12.0%	16.7%	12.5%
Fair (3)	4.7%	4.6%	6.2%	4.8%
Poor (2)	1.3%	1.6%	4.1%	1.7%
Unsatisfactory (1)	0.7%	0.9%	4.7%	1.1%
Mean	5.3	5.3	4.9	5.3
Median	6	6	5	6
Count	979	3372	341	4692



## Student Opinion of Teaching Effectiveness (SOTE)- College of Education Winter 2018 Term Summary

**1. Rate your interest in the subject matter of this course before you took the class.**

	Response by Course Level			
	Lower	Upper	Grad	Total
Very High (1)	48.6%	38.1%	47.0%	43.5%
High (2)	25.7%	30.4%	23.8%	26.6%
Moderately High (3)	15.7%	15.9%	18.2%	17.1%
Moderately Low (4)	4.3%	5.7%	4.8%	5.1%
Low (5)	5.7%	6.3%	3.7%	4.9%
Very Low (6)	0.0%	3.6%	2.6%	2.8%
Mean	1.9	2.2	2.0	2.1
Median	2	2	2	2
Count	70	473	626	1169

**2. How many class sessions did you attend?**

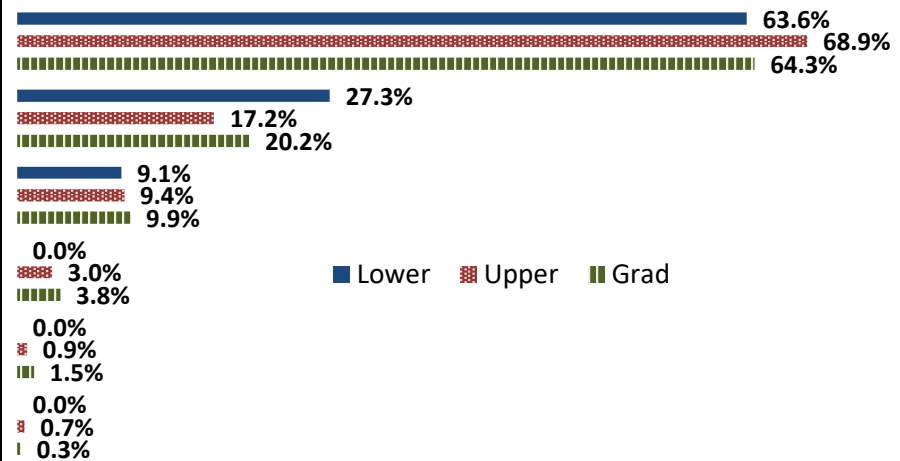
	Response by Course Level			
	Lower	Upper	Grad	Total
All (1)	87.3%	74.4%	73.7%	74.8%
Almost All (2)	11.3%	25.2%	25.0%	24.2%
More than Half (3)	1.4%	0.2%	1.1%	0.8%
Less than Half (4)	0.0%	0.2%	0.2%	0.2%
Mean	1.1	1.3	1.3	1.3
Median	1	1	1	1
Count	71	469	624	1164

**3. Why did you take this course? Choose all that apply.**

	Response by Course Level			
	Lower	Upper	Grad	Total
3a. The course fulfills a general education requirement.	32.9%	28.2%	29.3%	29.1%
3b. The course fulfills a requirement in my major.	64.4%	69.4%	80.5%	75.1%
3c. I have enjoyed the professor's class(es) in the past.	6.9%	13.0%	18.7%	15.7%
3d. The course will improve job/career opportunities.	27.4%	25.6%	30.4%	28.3%
3e. The course sounded interesting to me.	37.0%	10.8%	14.6%	14.4%

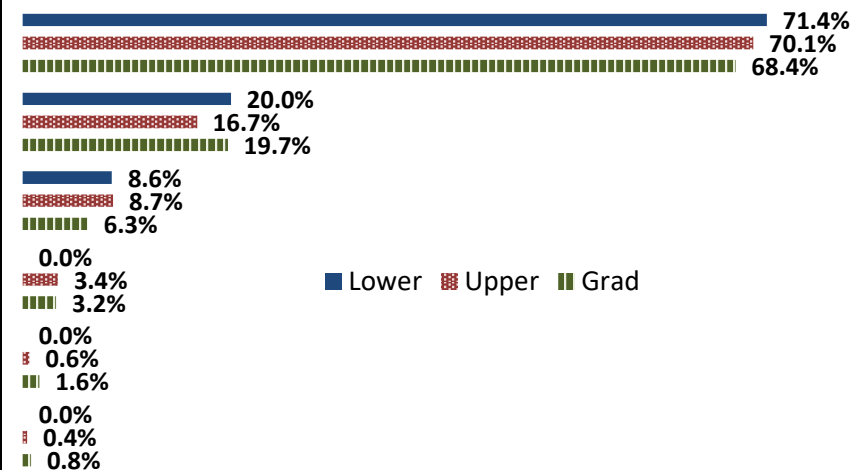
**4. How would you rate the overall quality of instruction in this course?**

	Response by Course Level			
	Lower	Upper	Grad	Total
Excellent (6)	63.6%	68.9%	64.3%	66.1%
Very Good (5)	27.3%	17.2%	20.2%	19.4%
Good (4)	9.1%	9.4%	9.9%	9.6%
Fair (3)	0.0%	3.0%	3.8%	3.3%
Poor (2)	0.0%	0.9%	1.5%	1.2%
Unsatisfactory (1)	0.0%	0.7%	0.3%	0.4%
Mean	5.5	5.5	5.4	5.4
Median	6	6	6	6
Count	66	460	608	1134



**5. How would you rate your professor's specific contribution to your learning in this course?**

	Response by Course Level			
	Lower	Upper	Grad	Total
Excellent (6)	71.4%	70.1%	68.4%	69.3%
Very Good (5)	20.0%	16.7%	19.7%	18.5%
Good (4)	8.6%	8.7%	6.3%	7.4%
Fair (3)	0.0%	3.4%	3.2%	3.1%
Poor (2)	0.0%	0.6%	1.6%	1.1%
Unsatisfactory (1)	0.0%	0.4%	0.8%	0.6%
Mean	5.6	5.5	5.5	5.5
Median	6	6	6	6
Count	70	472	624	1166



## Student Opinion of Teaching Effectiveness (SOTE)- College of Natural Sciences Winter 2018 Term Summary

**1. Rate your interest in the subject matter of this course before you took the class.**

	Response by Course Level			
	Lower	Upper	Grad	Total
Very High (1)	22.7%	36.4%	39.1%	28.0%
High (2)	24.8%	27.4%	27.5%	25.8%
Moderately High (3)	20.5%	18.7%	18.1%	19.8%
Moderately Low (4)	11.7%	7.2%	7.3%	10.0%
Low (5)	12.9%	6.9%	4.4%	10.6%
Very Low (6)	7.4%	3.4%	3.6%	5.9%
Mean	2.9	2.3	2.2	2.7
Median	3	2	2	2
Count	7033	4208	138	11379

**2. How many class sessions did you attend?**

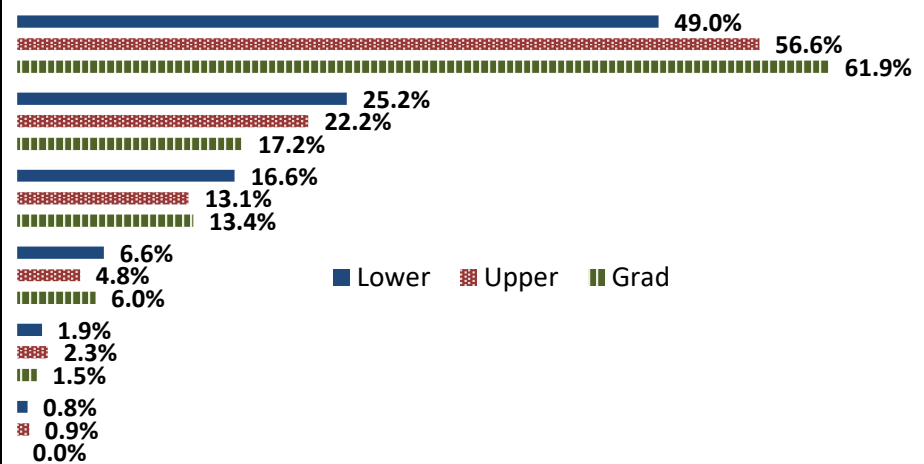
	Response by Course Level			
	Lower	Upper	Grad	Total
All (1)	67.6%	64.7%	72.2%	66.6%
Almost All (2)	29.5%	32.9%	27.1%	30.7%
More than Half (3)	2.4%	1.9%	0.8%	2.2%
Less than Half (4)	0.6%	0.4%	0.0%	0.5%
Mean	1.4	1.4	1.3	1.4
Median	1	1	1	1
Count	7039	4186	133	11358

**3. Why did you take this course? Choose all that apply.**

	Response by Course Level			
	Lower	Upper	Grad	Total
3a. The course fulfills a general education requirement.	52.5%	25.7%	25.5%	42.4%
3b. The course fulfills a requirement in my major.	53.1%	76.6%	70.5%	62.0%
3c. I have enjoyed the professor's class(es) in the past.	2.6%	11.0%	12.8%	5.8%
3d. The course will improve job/career opportunities.	11.0%	20.3%	26.9%	14.6%
3e. The course sounded interesting to me.	11.0%	18.6%	14.1%	13.8%

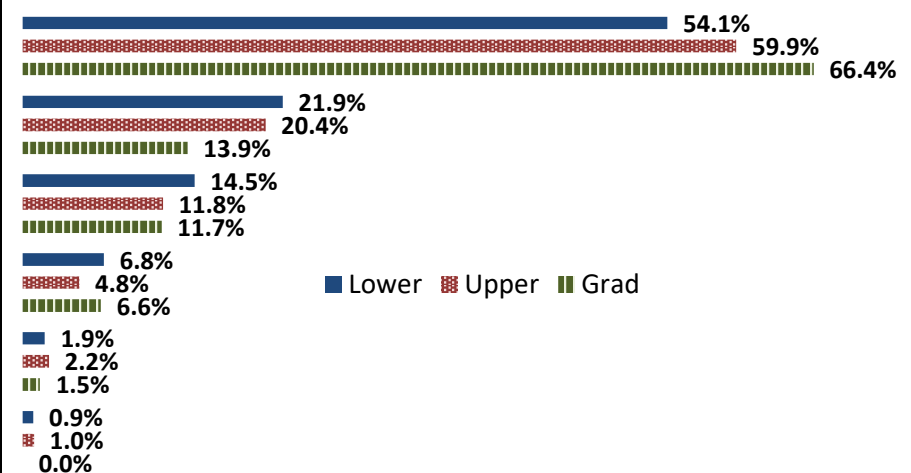
**4. How would you rate the overall quality of instruction in this course?**

	Response by Course Level			
	Lower	Upper	Grad	Total
Excellent (6)	49.0%	56.6%	61.9%	51.9%
Very Good (5)	25.2%	22.2%	17.2%	24.0%
Good (4)	16.6%	13.1%	13.4%	15.3%
Fair (3)	6.6%	4.8%	6.0%	5.9%
Poor (2)	1.9%	2.3%	1.5%	2.1%
Unsatisfactory (1)	0.8%	0.9%	0.0%	0.8%
Mean	5.1	5.2	5.3	5.2
Median	5	6	6	6
Count	7013	4185	134	11332



**5. How would you rate your professor's specific contribution to your learning in this course?**

	Response by Course Level			
	Lower	Upper	Grad	Total
Excellent (6)	54.1%	59.9%	66.4%	56.4%
Very Good (5)	21.9%	20.4%	13.9%	21.2%
Good (4)	14.5%	11.8%	11.7%	13.4%
Fair (3)	6.8%	4.8%	6.6%	6.1%
Poor (2)	1.9%	2.2%	1.5%	2.0%
Unsatisfactory (1)	0.9%	1.0%	0.0%	0.9%
Mean	5.2	5.3	5.4	5.2
Median	5	6	6	6
Count	7065	4228	137	11430



## Student Opinion of Teaching Effectiveness (SOTE)- College of Social and Behavioral Sciences Winter 2018 Term Summary

**1. Rate your interest in the subject matter of this course before you took the class.**

	Response by Course Level			
	Lower	Upper	Grad	Total
Very High (1)	21.6%	32.7%	50.0%	29.4%
High (2)	24.4%	28.4%	27.3%	26.9%
Moderately High (3)	21.4%	18.6%	10.7%	19.2%
Moderately Low (4)	12.0%	8.4%	6.0%	9.6%
Low (5)	14.7%	8.3%	3.4%	10.4%
Very Low (6)	5.9%	3.8%	2.6%	4.5%
Mean	2.9	2.4	1.9	2.6
Median	3	2	2	2
Count	3346	5591	384	9321

**2. How many class sessions did you attend?**

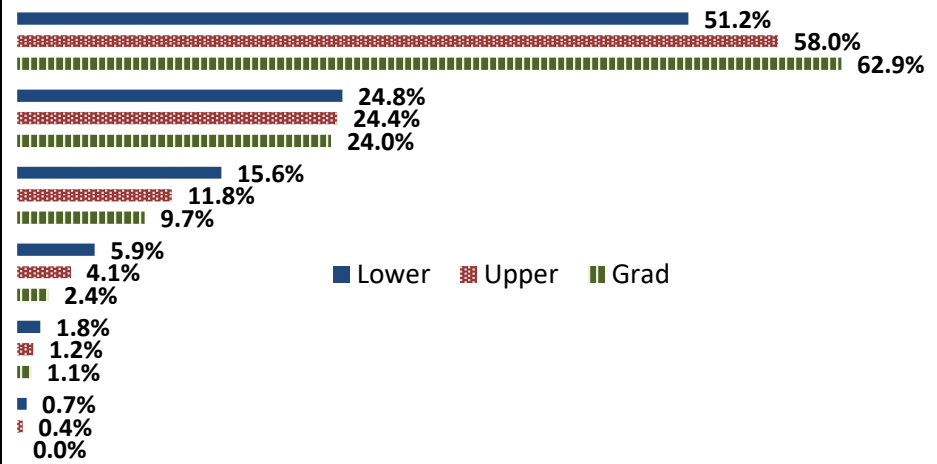
	Response by Course Level			
	Lower	Upper	Grad	Total
All (1)	50.0%	52.5%	61.5%	52.0%
Almost All (2)	45.3%	43.9%	38.0%	44.2%
More than Half (3)	3.8%	3.2%	0.5%	3.3%
Less than Half (4)	0.9%	0.4%	0.0%	0.6%
Mean	1.6	1.5	1.4	1.5
Median	1	1	1	1
Count	3354	5593	382	9329

**3. Why did you take this course? Choose all that apply.**

	Response by Course Level			
	Lower	Upper	Grad	Total
3a. The course fulfills a general education requirement.	71.5%	34.7%	33.9%	48.0%
3b. The course fulfills a requirement in my major.	28.3%	70.6%	80.2%	55.6%
3c. I have enjoyed the professor's class(es) in the past.	2.4%	12.2%	20.1%	8.9%
3d. The course will improve job/career opportunities.	8.9%	19.5%	35.7%	16.3%
3e. The course sounded interesting to me.	18.8%	31.7%	28.4%	26.9%

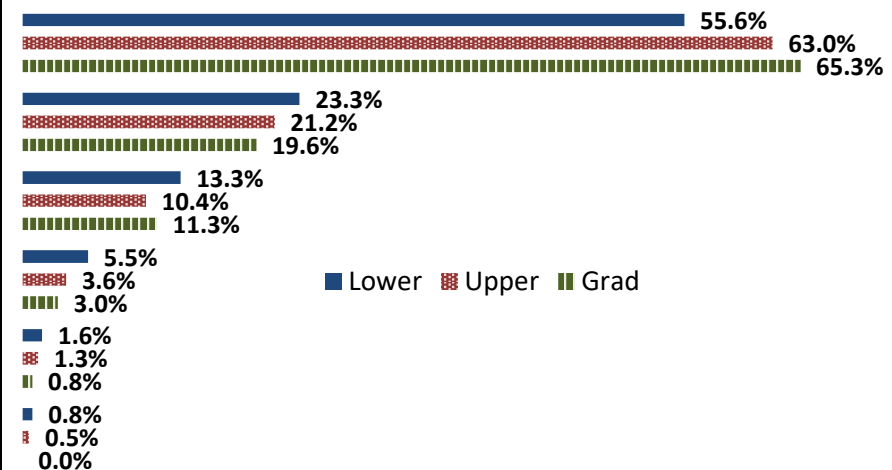
**4. How would you rate the overall quality of instruction in this course?**

	Response by Course Level			
	Lower	Upper	Grad	Total
Excellent (6)	51.2%	58.0%	62.9%	55.8%
Very Good (5)	24.8%	24.4%	24.0%	24.5%
Good (4)	15.6%	11.8%	9.7%	13.1%
Fair (3)	5.9%	4.1%	2.4%	4.7%
Poor (2)	1.8%	1.2%	1.1%	1.4%
Unsatisfactory (1)	0.7%	0.4%	0.0%	0.5%
Mean	5.2	5.3	5.5	5.3
Median	6	6	6	6
Count	3224	5472	380	9076



**5. How would you rate your professor's specific contribution to your learning in this course?**

	Response by Course Level			
	Lower	Upper	Grad	Total
Excellent (6)	55.6%	63.0%	65.3%	60.4%
Very Good (5)	23.3%	21.2%	19.6%	21.9%
Good (4)	13.3%	10.4%	11.3%	11.4%
Fair (3)	5.5%	3.6%	3.0%	4.3%
Poor (2)	1.6%	1.3%	0.8%	1.4%
Unsatisfactory (1)	0.8%	0.5%	0.0%	0.6%
Mean	5.2	5.4	5.5	5.3
Median	6	6	6	6
Count	3319	5607	372	9298



## Student Opinion of Teaching Effectiveness (SOTE)- College of University Studies Winter 2018 Term Summary

**1. Rate your interest in the subject matter of this course before you took the class.**

	Response by Course Level			
	Lower	Upper	Grad	Total
Very High (1)	0.0%	0.0%	0.0%	0.0%
High (2)	0.0%	0.0%	0.0%	0.0%
Moderately High (3)	0.0%	0.0%	0.0%	0.0%
Moderately Low (4)	0.0%	0.0%	0.0%	0.0%
Low (5)	0.0%	0.0%	0.0%	0.0%
Very Low (6)	0.0%	0.0%	0.0%	0.0%
Mean	.	.	.	.
Median	.	.	.	.
Count	0	0	0	0

**2. How many class sessions did you attend?**

	Response by Course Level			
	Lower	Upper	Grad	Total
All (1)	0.0%	0.0%	0.0%	0.0%
Almost All (2)	0.0%	0.0%	0.0%	0.0%
More than Half (3)	0.0%	0.0%	0.0%	0.0%
Less than Half (4)	0.0%	0.0%	0.0%	0.0%
Mean	.	.	.	.
Median	.	.	.	.
Count	0	0	0	0

**3. Why did you take this course? Choose all that apply.**

	Response by Course Level			
	Lower	Upper	Grad	Total
3a. The course fulfills a general education requirement.	0.0%	0.0%	0.0%	0.0%
3b. The course fulfills a requirement in my major.	0.0%	0.0%	0.0%	0.0%
3c. I have enjoyed the professor's class(es) in the past.	0.0%	0.0%	0.0%	0.0%
3d. The course will improve job/career opportunities.	0.0%	0.0%	0.0%	0.0%
3e. The course sounded interesting to me.	0.0%	0.0%	0.0%	0.0%

**4. How would you rate the overall quality of instruction in this course?**

	Response by Course Level			
	Lower	Upper	Grad	Total
Excellent (6)	0.0%	0.0%	0.0%	0.0%
Very Good (5)	0.0%	0.0%	0.0%	0.0%
Good (4)	0.0%	0.0%	0.0%	0.0%
Fair (3)	0.0%	0.0%	0.0%	0.0%
Poor (2)	0.0%	0.0%	0.0%	0.0%
Unsatisfactory (1)	0.0%	0.0%	0.0%	0.0%
Mean	.	.	.	.
Median	.	.	.	.
Count	0	0	0	0

0.0%  
0.0%  
0.0%  
0.0%  
0.0%  
0.0%  
0.0%  
0.0%  
0.0%  
0.0%  
0.0%  
0.0%  
0.0%  
0.0%  
0.0%

■ Lower ■ Upper ■ Grad

**5. How would you rate your professor's specific contribution to you learning in this course?**

	Response by Course Level			
	Lower	Upper	Grad	Total
Excellent (6)	0.0%	0.0%	0.0%	0.0%
Very Good (5)	0.0%	0.0%	0.0%	0.0%
Good (4)	0.0%	0.0%	0.0%	0.0%
Fair (3)	0.0%	0.0%	0.0%	0.0%
Poor (2)	0.0%	0.0%	0.0%	0.0%
Unsatisfactory (1)	0.0%	0.0%	0.0%	0.0%
Mean	.	.	.	.
Median	.	.	.	.
Count	0	0	0	0

0.0%  
0.0%  
0.0%  
0.0%  
0.0%  
0.0%  
0.0%  
0.0%  
0.0%  
0.0%  
0.0%  
0.0%

■ Lower ■ Upper ■ Grad