

## Student Opinion of Teaching Effectiveness (SOTE)- College of Arts & Letters Spring 2016 Term Summary

### 1. Rate your interest in the subject matter of this course before you took the class.

	Response by Course Level			
	Lower	Upper	Grad	Total
Very High (1)	27.0%	42.2%	67.0%	33.7%
High (2)	24.5%	25.4%	20.9%	24.8%
Moderately High (3)	21.4%	17.4%	8.7%	19.6%
Moderately Low (4)	10.6%	7.0%	1.7%	9.0%
Low (5)	11.6%	5.2%	1.7%	8.9%
Very Low (6)	4.9%	2.9%	0.0%	4.0%
Mean	2.7	2.2	1.5	2.5
Median	2	2	1	2
Count	4196	2875	115	7186

### 2. How many class sessions did you attend?

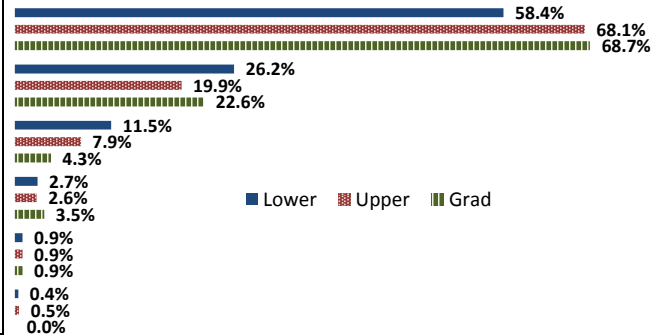
	Response by Course Level			
	Lower	Upper	Grad	Total
All (1)	44.6%	44.6%	64.0%	44.9%
Almost All (2)	50.3%	52.2%	34.2%	50.8%
More than Half (3)	4.3%	2.7%	1.8%	3.6%
Less than Half (4)	0.8%	0.5%	0.0%	0.6%
Mean	1.6	1.6	1.4	1.6
Median	2	2	1	2
Count	4197	2848	111	7156

### 3. Why did you take this course? Choose all that apply.

	Response by Course Level			
	Lower	Upper	Grad	Total
3a. The course fulfills a general education requirement.	70.0%	37.7%	30.4%	56.6%
3b. The course fulfills a requirement in my major.	22.0%	60.3%	72.0%	38.0%
3c. I have enjoyed the professor's class(es) in the past.	8.2%	18.2%	38.4%	12.7%
3d. The course will improve job/career opportunities.	16.0%	23.5%	30.4%	19.2%
3e. The course sounded interesting to me.	23.3%	38.0%	44.8%	29.5%

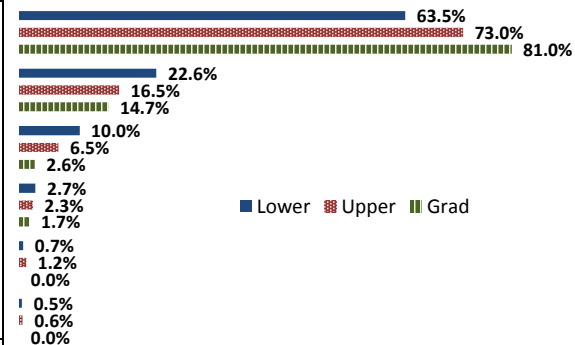
### 4. How would you rate the overall quality of instruction in this course?

	Response by Course Level			
	Lower	Upper	Grad	Total
Excellent (6)	58.4%	68.1%	68.7%	62.4%
Very Good (5)	26.2%	19.9%	22.6%	23.6%
Good (4)	11.5%	7.9%	4.3%	10.0%
Fair (3)	2.7%	2.6%	3.5%	2.7%
Poor (2)	0.9%	0.9%	0.9%	0.9%
Unsatisfactory (1)	0.4%	0.5%	0.0%	0.4%
Mean	5.4	5.5	5.5	5.4
Median	6	6	6	6
Count	4229	2866	115	7210



### 5. How would you rate your professor's specific contribution to you learning in this course?

	Response by Course Level			
	Lower	Upper	Grad	Total
Excellent (6)	63.5%	73.0%	81.0%	67.6%
Very Good (5)	22.6%	16.5%	14.7%	20.0%
Good (4)	10.0%	6.5%	2.6%	8.5%
Fair (3)	2.7%	2.3%	1.7%	2.5%
Poor (2)	0.7%	1.2%	0.0%	0.9%
Unsatisfactory (1)	0.5%	0.6%	0.0%	0.5%
Mean	5.4	5.6	5.8	5.5
Median	6	6	6	6
Count	4213	2863	116	7192



# Student Opinion of Teaching Effectiveness (SOTE)- College of Business and Public Administration Spring 2016 Term Summary

## 1. Rate your interest in the subject matter of this course before you took the class.

	Response by Course Level			
	Lower	Upper	Grad	Total
Very High (1)	28.2%	32.3%	34.8%	31.7%
High (2)	24.8%	30.2%	27.0%	28.8%
Moderately High (3)	22.1%	20.5%	21.9%	21.0%
Moderately Low (4)	8.1%	7.8%	7.5%	7.8%
Low (5)	11.7%	6.3%	6.0%	7.4%
Very Low (6)	5.1%	2.9%	2.8%	3.4%
Mean	2.7	2.3	2.3	2.4
Median	2	2	2	2
Count	766	2579	319	3664

## 2. How many class sessions did you attend?

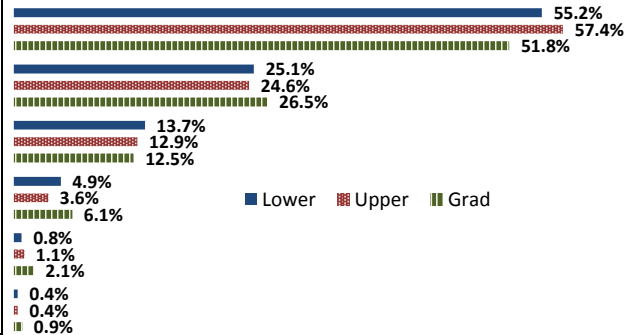
	Response by Course Level			
	Lower	Upper	Grad	Total
All (1)	62.4%	55.8%	59.1%	57.5%
Almost All (2)	34.6%	41.6%	38.1%	39.8%
More than Half (3)	2.4%	2.2%	2.1%	2.2%
Less than Half (4)	0.7%	0.4%	0.6%	0.5%
Mean	1.4	1.5	1.4	1.5
Median	1	1	1	1
Count	757	2572	328	3657

## 3. Why did you take this course? Choose all that apply.

	Response by Course Level			
	Lower	Upper	Grad	Total
3a. The course fulfills a general education requirement.	44.8%	25.6%	38.7%	30.7%
3b. The course fulfills a requirement in my major.	62.6%	79.7%	65.3%	74.9%
3c. I have enjoyed the professor's class(es) in the past.	6.4%	8.8%	9.5%	8.4%
3d. The course will improve job/career opportunities.	20.6%	26.0%	25.4%	24.8%
3e. The course sounded interesting to me.	17.8%	15.3%	16.5%	15.9%

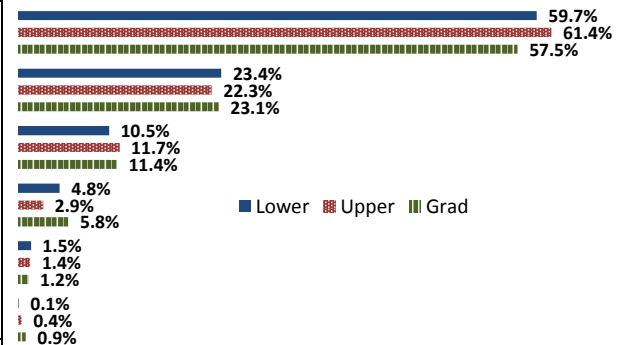
## 4. How would you rate the overall quality of instruction in this course?

	Response by Course Level			
	Lower	Upper	Grad	Total
Excellent (6)	55.2%	57.4%	51.8%	56.5%
Very Good (5)	25.1%	24.6%	26.5%	24.9%
Good (4)	13.7%	12.9%	12.5%	13.0%
Fair (3)	4.9%	3.6%	6.1%	4.1%
Poor (2)	0.8%	1.1%	2.1%	1.1%
Unsatisfactory (1)	0.4%	0.4%	0.9%	0.5%
Mean	5.3	5.3	5.2	5.3
Median	6	6	6	6
Count	776	2582	328	3686



## 5. How would you rate your professor's specific contribution to you learning in this course?

	Response by Course Level			
	Lower	Upper	Grad	Total
Excellent (6)	59.7%	61.4%	57.5%	60.7%
Very Good (5)	23.4%	22.3%	23.1%	22.6%
Good (4)	10.5%	11.7%	11.4%	11.4%
Fair (3)	4.8%	2.9%	5.8%	3.6%
Poor (2)	1.5%	1.4%	1.2%	1.4%
Unsatisfactory (1)	0.1%	0.4%	0.9%	0.4%
Mean	5.3	5.4	5.3	5.4
Median	6	6	6	6
Count	755	2575	325	3655



## Student Opinion of Teaching Effectiveness (SOTE)- College of Education Spring 2016 Term Summary

### 1. Rate your interest in the subject matter of this course before you took the class.

	Response by Course Level			
	Lower	Upper	Grad	Total
Very High (1)	0.0%	0.0%	47.9%	47.9%
High (2)	0.0%	0.0%	27.1%	27.1%
Moderately High (3)	0.0%	0.0%	13.2%	13.2%
Moderately Low (4)	0.0%	0.0%	7.6%	7.6%
Low (5)	0.0%	0.0%	3.6%	3.6%
Very Low (6)	0.0%	0.0%	0.6%	0.6%
Mean	N/A	N/A	1.9	1.9
Median	N/A	N/A	2	2
Count	0	0	501	501

### 2. How many class sessions did you attend?

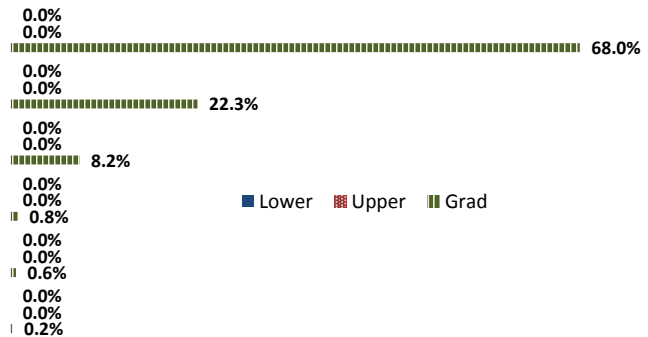
	Response by Course Level			
	Lower	Upper	Grad	Total
All (1)	0.0%	0.0%	67.8%	67.8%
Almost All (2)	0.0%	0.0%	30.7%	30.7%
More than Half (3)	0.0%	0.0%	0.8%	0.8%
Less than Half (4)	0.0%	0.0%	0.6%	0.6%
Mean	N/A	N/A	1.3	1.3
Median	N/A	N/A	1	1
Count	0	0	488	488

### 3. Why did you take this course? Choose all that apply.

	Response by Course Level			
	Lower	Upper	Grad	Total
3a. The course fulfills a general education requirement.	0.0%	0.0%	30.3%	30.3%
3b. The course fulfills a requirement in my major.	0.0%	0.0%	80.8%	80.8%
3c. I have enjoyed the professor's class(es) in the past.	0.0%	0.0%	16.7%	16.7%
3d. The course will improve job/career opportunities.	0.0%	0.0%	29.2%	29.2%
3e. The course sounded interesting to me.	0.0%	0.0%	13.1%	13.1%

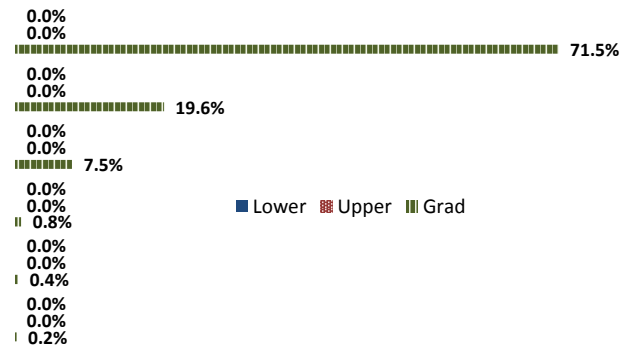
### 4. How would you rate the overall quality of instruction in this course?

	Response by Course Level			
	Lower	Upper	Grad	Total
Excellent (6)	0.0%	0.0%	68.0%	68.0%
Very Good (5)	0.0%	0.0%	22.3%	22.3%
Good (4)	0.0%	0.0%	8.2%	8.2%
Fair (3)	0.0%	0.0%	0.8%	0.8%
Poor (2)	0.0%	0.0%	0.6%	0.6%
Unsatisfactory (1)	0.0%	0.0%	0.2%	0.2%
Mean	N/A	N/A	5.6	5.6
Median	N/A	N/A	6	6
Count	0	0	503	503



### 5. How would you rate your professor's specific contribution to you learning in this course?

	Response by Course Level			
	Lower	Upper	Grad	Total
Excellent (6)	0.0%	0.0%	71.5%	71.5%
Very Good (5)	0.0%	0.0%	19.6%	19.6%
Good (4)	0.0%	0.0%	7.5%	7.5%
Fair (3)	0.0%	0.0%	0.8%	0.8%
Poor (2)	0.0%	0.0%	0.4%	0.4%
Unsatisfactory (1)	0.0%	0.0%	0.2%	0.2%
Mean	N/A	N/A	5.6	5.6
Median	N/A	N/A	6	6
Count	0	0	491	491



## Student Opinion of Teaching Effectiveness (SOTE)- College of Natural Sciences Spring 2016 Term Summary

### 1. Rate your interest in the subject matter of this course before you took the class.

	Response by Course Level			
	Lower	Upper	Grad	Total
Very High (1)	24.5%	33.7%	47.4%	28.2%
High (2)	25.6%	28.1%	28.1%	26.6%
Moderately High (3)	21.0%	19.5%	12.3%	20.4%
Moderately Low (4)	10.6%	8.6%	7.9%	9.8%
Low (5)	11.1%	6.7%	4.4%	9.4%
Very Low (6)	7.1%	3.4%	0.0%	5.6%
Mean	2.8	2.4	1.9	2.6
Median	2	2	2	2
Count	6328	3873	114	10315

### 2. How many class sessions did you attend?

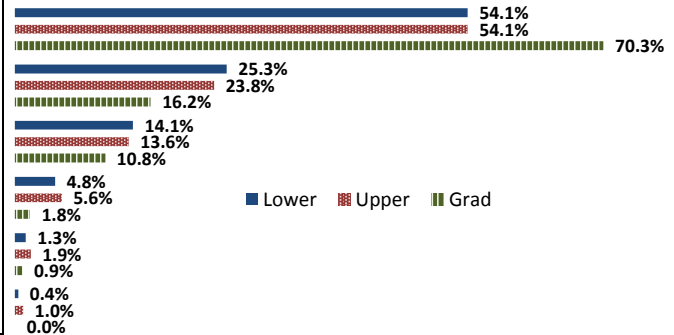
	Response by Course Level			
	Lower	Upper	Grad	Total
All (1)	61.8%	62.1%	62.7%	61.9%
Almost All (2)	35.1%	35.5%	32.7%	35.3%
More than Half (3)	2.3%	1.9%	3.6%	2.2%
Less than Half (4)	0.7%	0.4%	0.9%	0.6%
Mean	1.4	1.4	1.4	1.4
Median	1	1	1	1
Count	6323	3854	110	10287

### 3. Why did you take this course? Choose all that apply.

	Response by Course Level			
	Lower	Upper	Grad	Total
3a. The course fulfills a general education requirement.	53.0%	23.3%	23.0%	41.6%
3b. The course fulfills a requirement in my major.	48.2%	78.5%	62.3%	59.7%
3c. I have enjoyed the professor's class(es) in the past.	6.0%	14.2%	13.1%	9.1%
3d. The course will improve job/career opportunities.	11.8%	21.4%	18.9%	15.4%
3e. The course sounded interesting to me.	16.0%	19.4%	19.7%	17.3%

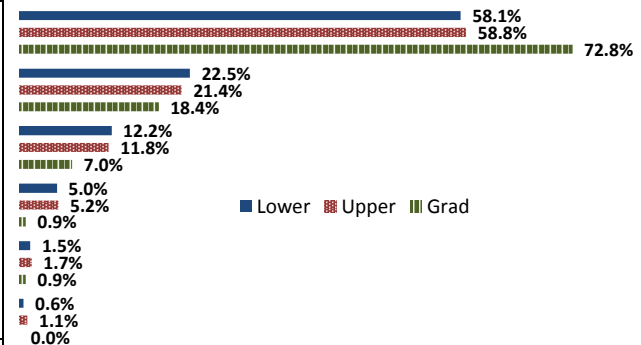
### 4. How would you rate the overall quality of instruction in this course?

	Response by Course Level			
	Lower	Upper	Grad	Total
Excellent (6)	54.1%	54.1%	70.3%	54.3%
Very Good (5)	25.3%	23.8%	16.2%	24.7%
Good (4)	14.1%	13.6%	10.8%	13.9%
Fair (3)	4.8%	5.6%	1.8%	5.1%
Poor (2)	1.3%	1.9%	0.9%	1.5%
Unsatisfactory (1)	0.4%	1.0%	0.0%	0.6%
Mean	5.2	5.2	5.5	5.2
Median	6	6	6	6
Count	6363	3881	111	10355



### 5. How would you rate your professor's specific contribution to you learning in this course?

	Response by Course Level			
	Lower	Upper	Grad	Total
Excellent (6)	58.1%	58.8%	72.8%	58.6%
Very Good (5)	22.5%	21.4%	18.4%	22.0%
Good (4)	12.2%	11.8%	7.0%	12.0%
Fair (3)	5.0%	5.2%	0.9%	5.1%
Poor (2)	1.5%	1.7%	0.9%	1.6%
Unsatisfactory (1)	0.6%	1.1%	0.0%	0.8%
Mean	5.3	5.3	5.6	5.3
Median	6	6	6	6
Count	6353	3883	114	10350



# Student Opinion of Teaching Effectiveness (SOTE)- College of Social and Behavioral Sciences Spring 2016 Term Summary

## 1. Rate your interest in the subject matter of this course before you took the class.

	Response by Course Level			
	Lower	Upper	Grad	Total
Very High (1)	18.8%	32.6%	45.7%	28.5%
High (2)	27.1%	26.1%	25.4%	26.4%
Moderately High (3)	23.9%	19.2%	15.1%	20.6%
Moderately Low (4)	11.8%	9.2%	5.7%	9.9%
Low (5)	12.9%	8.6%	6.1%	10.0%
Very Low (6)	5.5%	4.4%	2.0%	4.6%
Mean	2.9	2.5	2.1	2.6
Median	3	2	2	2
Count	2590	4215	457	7262

## 2. How many class sessions did you attend?

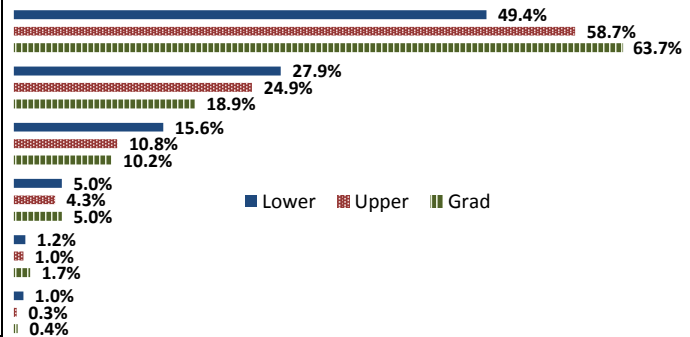
	Response by Course Level			
	Lower	Upper	Grad	Total
All (1)	49.3%	50.6%	60.0%	50.7%
Almost All (2)	45.1%	45.8%	38.9%	45.1%
More than Half (3)	4.6%	3.0%	0.9%	3.5%
Less than Half (4)	1.0%	0.5%	0.2%	0.7%
Mean	1.6	1.5	1.4	1.5
Median	2	1	1	1
Count	2584	4211	453	7248

## 3. Why did you take this course? Choose all that apply.

	Response by Course Level			
	Lower	Upper	Grad	Total
3a. The course fulfills a general education requirement.	75.0%	38.2%	26.5%	50.5%
3b. The course fulfills a requirement in my major.	27.9%	66.0%	72.4%	52.9%
3c. I have enjoyed the professor's class(es) in the past.	3.6%	12.8%	17.3%	9.8%
3d. The course will improve job/career opportunities.	9.2%	19.0%	26.9%	16.1%
3e. The course sounded interesting to me.	19.1%	32.5%	16.0%	26.6%

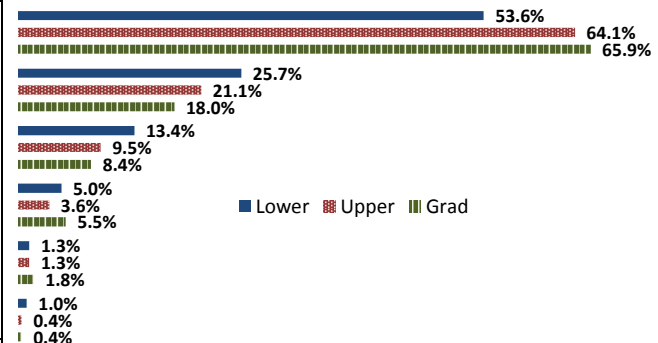
## 4. How would you rate the overall quality of instruction in this course?

	Response by Course Level			
	Lower	Upper	Grad	Total
Excellent (6)	49.4%	58.7%	63.7%	55.7%
Very Good (5)	27.9%	24.9%	18.9%	25.6%
Good (4)	15.6%	10.8%	10.2%	12.5%
Fair (3)	5.0%	4.3%	5.0%	4.6%
Poor (2)	1.2%	1.0%	1.7%	1.1%
Unsatisfactory (1)	1.0%	0.3%	0.4%	0.6%
Mean	5.2	5.4	5.4	5.3
Median	5	6	6	6
Count	2598	4203	460	7261



## 5. How would you rate your professor's specific contribution to you learning in this course?

	Response by Course Level			
	Lower	Upper	Grad	Total
Excellent (6)	53.6%	64.1%	65.9%	60.4%
Very Good (5)	25.7%	21.1%	18.0%	22.6%
Good (4)	13.4%	9.5%	8.4%	10.8%
Fair (3)	5.0%	3.6%	5.5%	4.2%
Poor (2)	1.3%	1.3%	1.8%	1.3%
Unsatisfactory (1)	1.0%	0.4%	0.4%	0.6%
Mean	5.2	5.4	5.4	5.3
Median	6	6	6	6
Count	2592	4203	451	7246



## Student Opinion of Teaching Effectiveness (SOTE)- College of University Studies Spring 2016 Term Summary

### 1. Rate your interest in the subject matter of this course before you took the class.

	Response by Course Level			
	Lower	Upper	Grad	Total
Very High (1)	29.6%	0.0%	0.0%	29.6%
High (2)	21.8%	0.0%	0.0%	21.8%
Moderately High (3)	19.7%	0.0%	0.0%	19.7%
Moderately Low (4)	13.4%	0.0%	0.0%	13.4%
Low (5)	9.9%	0.0%	0.0%	9.9%
Very Low (6)	5.6%	0.0%	0.0%	5.6%
Mean	2.7	N/A	N/A	2.7
Median	2	N/A	N/A	2
Count	142	0	0	142

### 2. How many class sessions did you attend?

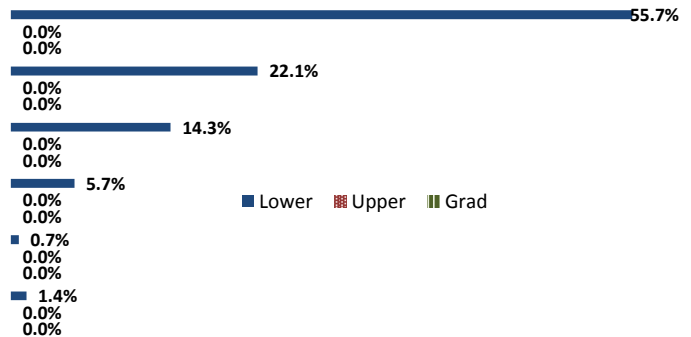
	Response by Course Level			
	Lower	Upper	Grad	Total
All (1)	45.9%	0.0%	0.0%	45.9%
Almost All (2)	48.1%	0.0%	0.0%	48.1%
More than Half (3)	5.2%	0.0%	0.0%	5.2%
Less than Half (4)	0.7%	0.0%	0.0%	0.7%
Mean	1.6	N/A	N/A	1.6
Median	2	N/A	N/A	2
Count	135	0	0	135

### 3. Why did you take this course? Choose all that apply.

	Response by Course Level			
	Lower	Upper	Grad	Total
3a. The course fulfills a general education requirement.	46.7%	0.0%	0.0%	46.7%
3b. The course fulfills a requirement in my major.	17.8%	0.0%	0.0%	17.8%
3c. I have enjoyed the professor's class(es) in the past.	2.0%	0.0%	0.0%	2.0%
3d. The course will improve job/career opportunities.	17.8%	0.0%	0.0%	17.8%
3e. The course sounded interesting to me.	21.1%	0.0%	0.0%	21.1%

### 4. How would you rate the overall quality of instruction in this course?

	Response by Course Level			
	Lower	Upper	Grad	Total
Excellent (6)	55.7%	0.0%	0.0%	55.7%
Very Good (5)	22.1%	0.0%	0.0%	22.1%
Good (4)	14.3%	0.0%	0.0%	14.3%
Fair (3)	5.7%	0.0%	0.0%	5.7%
Poor (2)	0.7%	0.0%	0.0%	0.7%
Unsatisfactory (1)	1.4%	0.0%	0.0%	1.4%
Mean	5.2	N/A	N/A	5.2
Median	6	N/A	N/A	6
Count	140	0	0	140



### 5. How would you rate your professor's specific contribution to you learning in this course?

	Response by Course Level			
	Lower	Upper	Grad	Total
Excellent (6)	58.9%	0.0%	0.0%	58.9%
Very Good (5)	18.4%	0.0%	0.0%	18.4%
Good (4)	11.3%	0.0%	0.0%	11.3%
Fair (3)	7.8%	0.0%	0.0%	7.8%
Poor (2)	2.1%	0.0%	0.0%	2.1%
Unsatisfactory (1)	0.5%	0.0%	0.0%	0.5%
Mean	5.2	N/A	N/A	5.2
Median	6	N/A	N/A	6
Count	141	0	0	141

