

## Student Opinion of Teaching Effectiveness (SOTE)- College of Arts & Letters Fall 2018 Term Summary

### 1. Rate your interest in the subject matter of this course before you took the class.

	Response by Course Level			
	Lower	Upper	Grad	Total
Very High (1)	25.7%	34.8%	59.1%	30.3%
High (2)	25.8%	25.0%	20.0%	25.3%
Moderately High (3)	22.0%	19.2%	16.4%	20.7%
Moderately Low (4)	10.8%	9.2%	0.9%	9.9%
Low (5)	11.5%	8.1%	1.8%	9.8%
Very Low (6)	4.4%	3.7%	1.8%	4.0%
Mean	2.7	2.4	1.7	2.6
Median	2	2	1	2
Count	4302	3682	110	8094

### 2. How many class sessions did you attend?

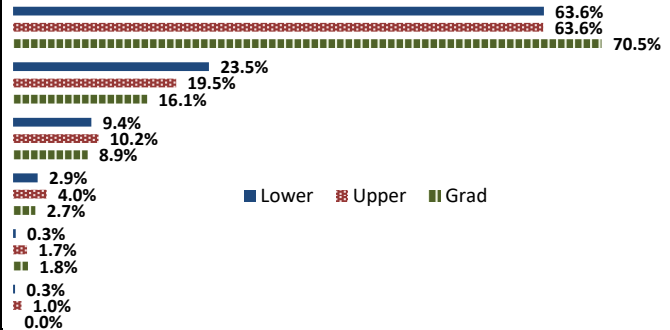
	Response by Course Level			
	Lower	Upper	Grad	Total
All (1)	53.9%	47.4%	48.7%	50.9%
Almost All (2)	42.9%	48.9%	51.4%	45.7%
More than Half (3)	2.6%	3.4%	0.0%	2.9%
Less than Half (4)	0.6%	0.4%	0.0%	0.5%
Mean	1.5	1.6	1.5	1.5
Median	1	2	2	1
Count	4302	3643	111	8056

### 3. Why did you take this course? Choose all that apply.

	Response by Course Level			
	Lower	Upper	Grad	Total
3a. The course fulfills a general education requirement.	69.5%	47.6%	22.8%	59.0%
3b. The course fulfills a requirement in my major.	29.3%	56.1%	82.5%	42.2%
3c. I have enjoyed the professor's class(es) in the past.	3.4%	9.1%	21.9%	6.3%
3d. The course will improve job/career opportunities.	17.2%	16.6%	34.2%	17.1%
3e. The course sounded interesting to me.	25.4%	31.7%	30.7%	28.3%

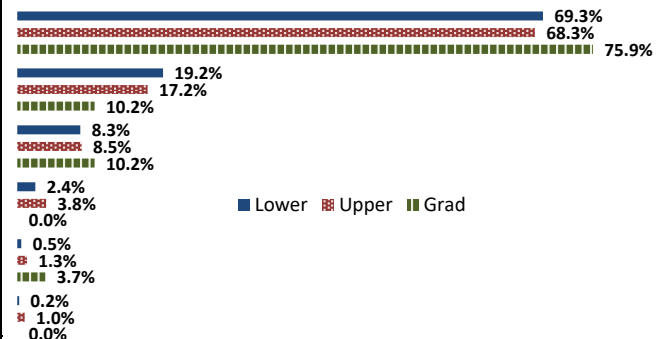
### 4. How would you rate the overall quality of instruction in this course?

	Response by Course Level			
	Lower	Upper	Grad	Total
Excellent (6)	63.6%	63.6%	70.5%	63.7%
Very Good (5)	23.5%	19.5%	16.1%	21.6%
Good (4)	9.4%	10.2%	8.9%	9.8%
Fair (3)	2.9%	4.0%	2.7%	3.4%
Poor (2)	0.3%	1.7%	1.8%	1.0%
Unsatisfactory (1)	0.3%	1.0%	0.0%	0.6%
Mean	5.5	5.4	5.5	5.4
Median	6	6	6	6
Count	4318	3685	112	8115



### 5. How would you rate your professor's specific contribution to you learning in this course?

	Response by Course Level			
	Lower	Upper	Grad	Total
Excellent (6)	69.3%	68.3%	75.9%	68.9%
Very Good (5)	19.2%	17.2%	10.2%	18.2%
Good (4)	8.3%	8.5%	10.2%	8.4%
Fair (3)	2.4%	3.8%	0.0%	3.0%
Poor (2)	0.5%	1.3%	3.7%	0.9%
Unsatisfactory (1)	0.2%	1.0%	0.0%	0.6%
Mean	5.5	5.4	5.5	5.5
Median	6	6	6	6
Count	4229	3654	108	7991



# Student Opinion of Teaching Effectiveness (SOTE)- College of Business and Public Administration Fall 2018 Term Summary

## 1. Rate your interest in the subject matter of this course before you took the class.

	Response by Course Level			
	Lower	Upper	Grad	Total
Very High (1)	31.5%	34.2%	35.5%	33.8%
High (2)	22.5%	26.2%	26.2%	25.5%
Moderately High (3)	21.1%	19.0%	23.1%	19.9%
Moderately Low (4)	9.8%	9.8%	7.9%	9.6%
Low (5)	11.3%	7.6%	5.5%	8.0%
Very Low (6)	3.9%	3.1%	1.9%	3.1%
Mean	2.6	2.4	2.3	2.4
Median	2	2	2	2
Count	882	3354	581	4817

## 2. How many class sessions did you attend?

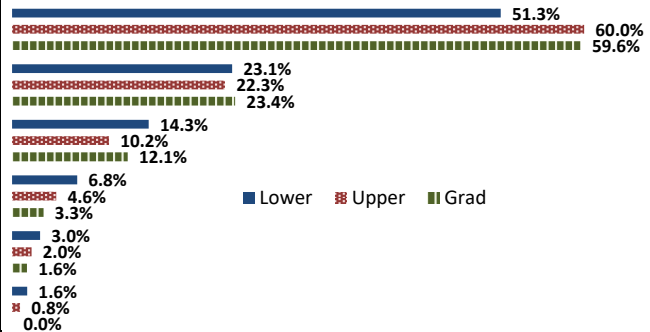
	Response by Course Level			
	Lower	Upper	Grad	Total
All (1)	66.3%	60.0%	76.4%	63.1%
Almost All (2)	30.8%	37.7%	20.4%	34.4%
More than Half (3)	2.1%	2.0%	1.4%	1.9%
Less than Half (4)	0.8%	0.3%	1.8%	0.6%
Mean	1.4	1.4	1.3	1.4
Median	1	1	1	1
Count	876	3350	568	4794

## 3. Why did you take this course? Choose all that apply.

	Response by Course Level			
	Lower	Upper	Grad	Total
3a. The course fulfills a general education requirement.	40.0%	29.9%	36.6%	32.5%
3b. The course fulfills a requirement in my major.	61.6%	78.2%	73.3%	74.6%
3c. I have enjoyed the professor's class(es) in the past.	1.8%	6.4%	7.6%	5.7%
3d. The course will improve job/career opportunities.	21.3%	27.6%	28.8%	26.6%
3e. The course sounded interesting to me.	20.1%	17.0%	17.6%	17.6%

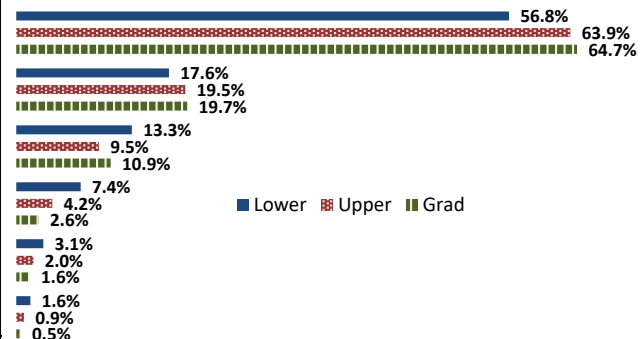
## 4. How would you rate the overall quality of instruction in this course?

	Response by Course Level			
	Lower	Upper	Grad	Total
Excellent (6)	51.3%	60.0%	59.6%	58.4%
Very Good (5)	23.1%	22.3%	23.4%	22.6%
Good (4)	14.3%	10.2%	12.1%	11.2%
Fair (3)	6.8%	4.6%	3.3%	4.9%
Poor (2)	3.0%	2.0%	1.6%	2.2%
Unsatisfactory (1)	1.6%	0.8%	0.0%	0.9%
Mean	5.1	5.3	5.4	5.3
Median	6	6	6	6
Count	880	3385	577	4842



## 5. How would you rate your professor's specific contribution to you learning in this course?

	Response by Course Level			
	Lower	Upper	Grad	Total
Excellent (6)	56.8%	63.9%	64.7%	62.8%
Very Good (5)	17.6%	19.5%	19.7%	19.2%
Good (4)	13.3%	9.5%	10.9%	10.4%
Fair (3)	7.4%	4.2%	2.6%	4.6%
Poor (2)	3.1%	2.0%	1.6%	2.1%
Unsatisfactory (1)	1.6%	0.9%	0.5%	1.0%
Mean	5.1	5.4	5.4	5.3
Median	6	6	6	6
Count	862	3344	578	4784



## Student Opinion of Teaching Effectiveness (SOTE)- College of Education Fall 2018 Term Summary

### 1. Rate your interest in the subject matter of this course before you took the class.

	Response by Course Level			
	Lower	Upper	Grad	Total
Very High (1)	44.6%	42.9%	48.8%	45.5%
High (2)	28.9%	28.9%	28.2%	28.6%
Moderately High (3)	15.7%	16.3%	14.7%	15.6%
Moderately Low (4)	7.2%	6.3%	4.4%	5.6%
Low (5)	1.2%	4.8%	3.6%	4.1%
Very Low (6)	2.4%	0.8%	0.4%	0.7%
Mean	2.0	2.0	1.9	2.0
Median	2	2	2	2
Count	83	662	564	1309

### 2. How many class sessions did you attend?

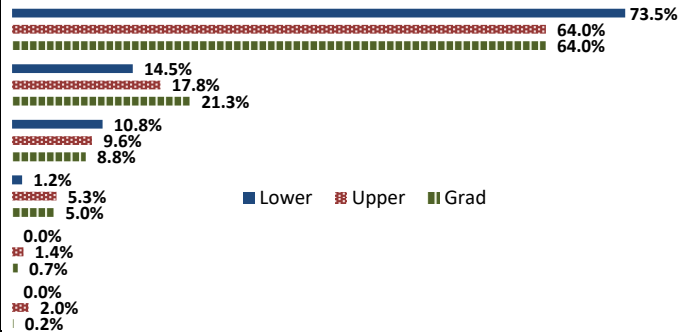
	Response by Course Level			
	Lower	Upper	Grad	Total
All (1)	76.5%	88.1%	83.2%	85.3%
Almost All (2)	23.5%	11.6%	16.6%	14.5%
More than Half (3)	0.0%	0.3%	0.0%	0.2%
Less than Half (4)	0.0%	0.0%	0.2%	0.1%
Mean	1.2	1.1	1.2	1.2
Median	1	1	1	1
Count	81	656	572	1309

### 3. Why did you take this course? Choose all that apply.

	Response by Course Level			
	Lower	Upper	Grad	Total
3a. The course fulfills a general education requirement.	34.9%	31.9%	23.1%	28.3%
3b. The course fulfills a requirement in my major.	68.6%	71.0%	85.9%	77.3%
3c. I have enjoyed the professor's class(es) in the past.	1.2%	5.7%	11.6%	8.0%
3d. The course will improve job/career opportunities.	32.6%	31.2%	27.7%	29.8%
3e. The course sounded interesting to me.	24.4%	16.9%	12.4%	15.4%

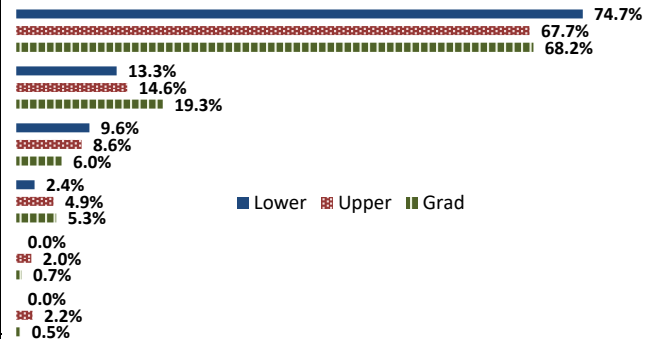
### 4. How would you rate the overall quality of instruction in this course?

	Response by Course Level			
	Lower	Upper	Grad	Total
Excellent (6)	73.5%	64.0%	64.0%	64.6%
Very Good (5)	14.5%	17.8%	21.3%	19.1%
Good (4)	10.8%	9.6%	8.8%	9.3%
Fair (3)	1.2%	5.3%	5.0%	4.9%
Poor (2)	0.0%	1.4%	0.7%	1.0%
Unsatisfactory (1)	0.0%	2.0%	0.2%	1.1%
Mean	5.6	5.3	5.4	5.4
Median	6	6	6	6
Count	83	658	577	1318



### 5. How would you rate your professor's specific contribution to you learning in this course?

	Response by Course Level			
	Lower	Upper	Grad	Total
Excellent (6)	74.7%	67.7%	68.2%	68.4%
Very Good (5)	13.3%	14.6%	19.3%	16.6%
Good (4)	9.6%	8.6%	6.0%	7.5%
Fair (3)	2.4%	4.9%	5.3%	4.9%
Poor (2)	0.0%	2.0%	0.7%	1.3%
Unsatisfactory (1)	0.0%	2.2%	0.5%	1.3%
Mean	5.6	5.3	5.5	5.4
Median	6	6	6	6
Count	83	650	569	1302



## Student Opinion of Teaching Effectiveness (SOTE)- College of Natural Sciences Fall 2018 Term Summary

### 1. Rate your interest in the subject matter of this course before you took the class.

	Response by Course Level			
	Lower	Upper	Grad	Total
Very High (1)	21.8%	35.7%	50.0%	27.1%
High (2)	25.4%	27.2%	26.9%	26.1%
Moderately High (3)	21.6%	19.5%	15.4%	20.8%
Moderately Low (4)	11.9%	7.6%	6.9%	10.3%
Low (5)	12.5%	7.3%	0.8%	10.5%
Very Low (6)	6.7%	2.8%	0.0%	5.2%
Mean	2.9	2.3	1.8	2.7
Median	3	2	2	2
Count	7888	4585	130	12603

### 2. How many class sessions did you attend?

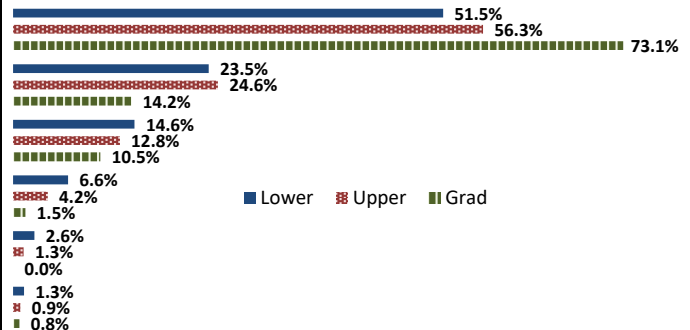
	Response by Course Level			
	Lower	Upper	Grad	Total
All (1)	69.3%	64.6%	87.1%	67.8%
Almost All (2)	28.3%	32.8%	12.9%	29.8%
More than Half (3)	2.0%	2.2%	0.0%	2.1%
Less than Half (4)	0.4%	0.4%	0.0%	0.4%
Mean	1.3	1.4	1.1	1.4
Median	1	1	1	1
Count	7918	4591	132	12641

### 3. Why did you take this course? Choose all that apply.

	Response by Course Level			
	Lower	Upper	Grad	Total
3a. The course fulfills a general education requirement.	58.8%	28.4%	28.8%	47.5%
3b. The course fulfills a requirement in my major.	50.1%	74.6%	75.5%	59.2%
3c. I have enjoyed the professor's class(es) in the past.	1.7%	8.5%	30.9%	4.5%
3d. The course will improve job/career opportunities.	10.9%	19.5%	32.4%	14.2%
3e. The course sounded interesting to me.	11.9%	18.5%	17.3%	14.3%

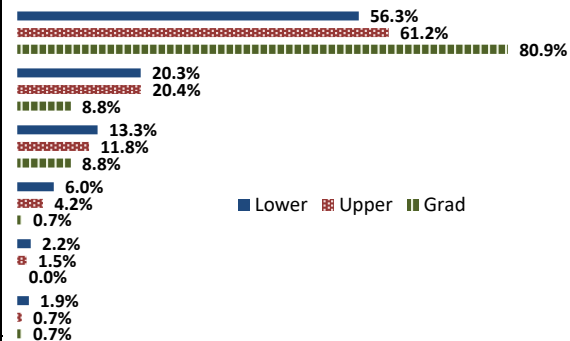
### 4. How would you rate the overall quality of instruction in this course?

	Response by Course Level			
	Lower	Upper	Grad	Total
Excellent (6)	51.5%	56.3%	73.1%	53.5%
Very Good (5)	23.5%	24.6%	14.2%	23.8%
Good (4)	14.6%	12.8%	10.5%	13.9%
Fair (3)	6.6%	4.2%	1.5%	5.7%
Poor (2)	2.6%	1.3%	0.0%	2.1%
Unsatisfactory (1)	1.3%	0.9%	0.8%	1.2%
Mean	5.1	5.3	5.6	5.2
Median	6	6	6	6
Count	7905	4601	134	12640



### 5. How would you rate your professor's specific contribution to you learning in this course?

	Response by Course Level			
	Lower	Upper	Grad	Total
Excellent (6)	56.3%	61.2%	80.9%	58.4%
Very Good (5)	20.3%	20.4%	8.8%	20.2%
Good (4)	13.3%	11.8%	8.8%	12.7%
Fair (3)	6.0%	4.2%	0.7%	5.3%
Poor (2)	2.2%	1.5%	0.0%	1.9%
Unsatisfactory (1)	1.9%	0.7%	0.7%	1.5%
Mean	5.2	5.3	5.7	5.2
Median	6	6	6	6
Count	7914	4602	136	12652



# Student Opinion of Teaching Effectiveness (SOTE)- College of Social and Behavioral Sciences Fall 2018 Term Summary

## 1. Rate your interest in the subject matter of this course before you took the class.

	Response by Course Level			
	Lower	Upper	Grad	Total
Very High (1)	22.6%	32.6%	47.4%	29.3%
High (2)	26.6%	29.2%	26.0%	28.1%
Moderately High (3)	22.2%	18.3%	15.6%	19.7%
Moderately Low (4)	11.9%	8.0%	5.5%	9.4%
Low (5)	12.3%	8.2%	3.4%	9.6%
Very Low (6)	4.4%	3.8%	2.2%	4.0%
Mean	2.8	2.4	2.0	2.5
Median	3	2	2	2
Count	3923	5669	416	10008

## 2. How many class sessions did you attend?

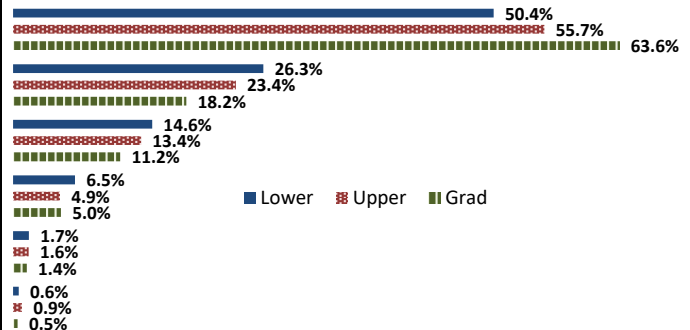
	Response by Course Level			
	Lower	Upper	Grad	Total
All (1)	53.9%	51.4%	78.4%	53.5%
Almost All (2)	42.1%	45.2%	20.7%	42.9%
More than Half (3)	3.3%	2.9%	1.0%	3.0%
Less than Half (4)	0.7%	0.5%	0.0%	0.6%
Mean	1.5	1.5	1.2	1.5
Median	1	1	1	1
Count	3934	5632	416	9982

## 3. Why did you take this course? Choose all that apply.

	Response by Course Level			
	Lower	Upper	Grad	Total
3a. The course fulfills a general education requirement.	70.2%	34.6%	35.2%	48.7%
3b. The course fulfills a requirement in my major.	34.9%	69.4%	76.5%	56.1%
3c. I have enjoyed the professor's class(es) in the past.	1.7%	10.2%	13.7%	7.0%
3d. The course will improve job/career opportunities.	10.2%	17.6%	31.7%	15.3%
3e. The course sounded interesting to me.	23.6%	32.1%	18.3%	28.2%

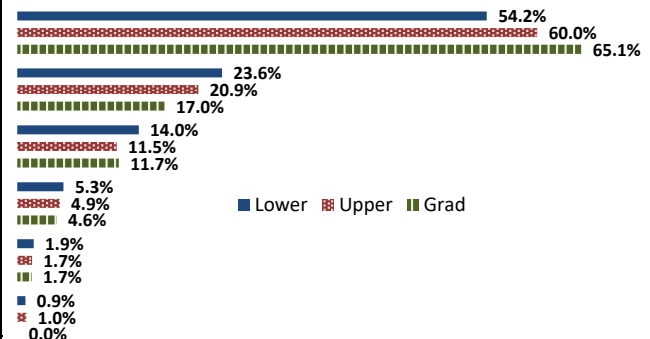
## 4. How would you rate the overall quality of instruction in this course?

	Response by Course Level			
	Lower	Upper	Grad	Total
Excellent (6)	50.4%	55.7%	63.6%	54.0%
Very Good (5)	26.3%	23.4%	18.2%	24.3%
Good (4)	14.6%	13.4%	11.2%	13.8%
Fair (3)	6.5%	4.9%	5.0%	5.5%
Poor (2)	1.7%	1.6%	1.4%	1.6%
Unsatisfactory (1)	0.6%	0.9%	0.5%	0.8%
Mean	5.2	5.2	5.4	5.2
Median	6	6	6	6
Count	3866	5637	418	9921



## 5. How would you rate your professor's specific contribution to you learning in this course?

	Response by Course Level			
	Lower	Upper	Grad	Total
Excellent (6)	54.2%	60.0%	65.1%	57.9%
Very Good (5)	23.6%	20.9%	17.0%	21.8%
Good (4)	14.0%	11.5%	11.7%	12.5%
Fair (3)	5.3%	4.9%	4.6%	5.1%
Poor (2)	1.9%	1.7%	1.7%	1.8%
Unsatisfactory (1)	0.9%	1.0%	0.0%	1.0%
Mean	5.2	5.3	5.4	5.3
Median	6	6	6	6
Count	3874	5599	418	9891



## Student Opinion of Teaching Effectiveness (SOTE)- College of University Studies Fall 2018 Term Summary

### 1. Rate your interest in the subject matter of this course before you took the class.

	Response by Course Level			
	Lower	Upper	Grad	Total
Very High (1)	62.5%	41.7%	0.0%	50.0%
High (2)	0.0%	8.3%	0.0%	5.0%
Moderately High (3)	25.0%	16.7%	0.0%	20.0%
Moderately Low (4)	12.5%	8.3%	0.0%	10.0%
Low (5)	0.0%	8.3%	0.0%	5.0%
Very Low (6)	0.0%	16.7%	0.0%	10.0%
Mean	1.9	2.8	.	2.4
Median	1	3	.	2
Count	8	12	0	20

### 2. How many class sessions did you attend?

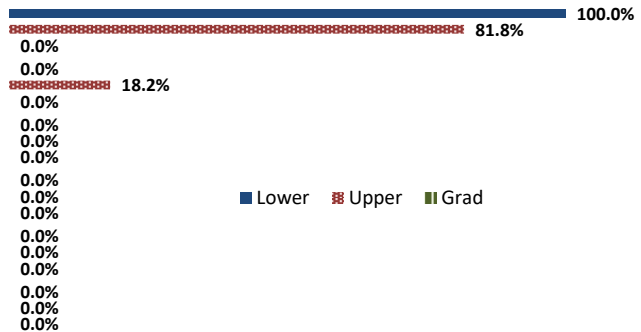
	Response by Course Level			
	Lower	Upper	Grad	Total
All (1)	62.5%	58.3%	0.0%	60.0%
Almost All (2)	37.5%	33.3%	0.0%	35.0%
More than Half (3)	0.0%	8.3%	0.0%	5.0%
Less than Half (4)	0.0%	0.0%	0.0%	0.0%
Mean	1.4	1.5	.	1.5
Median	1	1	.	1
Count	8	12	0	20

### 3. Why did you take this course? Choose all that apply.

	Response by Course Level			
	Lower	Upper	Grad	Total
3a. The course fulfills a general education requirement.	40.0%	92.3%	0.0%	69.6%
3b. The course fulfills a requirement in my major.	0.0%	0.0%	0.0%	0.0%
3c. I have enjoyed the professor's class(es) in the past.	0.0%	0.0%	0.0%	0.0%
3d. The course will improve job/career opportunities.	20.0%	15.4%	0.0%	17.4%
3e. The course sounded interesting to me.	0.0%	15.4%	0.0%	8.7%

### 4. How would you rate the overall quality of instruction in this course?

	Response by Course Level			
	Lower	Upper	Grad	Total
Excellent (6)	100.0%	81.8%	0.0%	90.0%
Very Good (5)	0.0%	18.2%	0.0%	10.0%
Good (4)	0.0%	0.0%	0.0%	0.0%
Fair (3)	0.0%	0.0%	0.0%	0.0%
Poor (2)	0.0%	0.0%	0.0%	0.0%
Unsatisfactory (1)	0.0%	0.0%	0.0%	0.0%
Mean	6.0	5.8	.	5.9
Median	6	6	.	6
Count	9	11	0	20



### 5. How would you rate your professor's specific contribution to your learning in this course?

	Response by Course Level			
	Lower	Upper	Grad	Total
Excellent (6)	100.0%	88.9%	0.0%	94.1%
Very Good (5)	0.0%	11.1%	0.0%	5.9%
Good (4)	0.0%	0.0%	0.0%	0.0%
Fair (3)	0.0%	0.0%	0.0%	0.0%
Poor (2)	0.0%	0.0%	0.0%	0.0%
Unsatisfactory (1)	0.0%	0.0%	0.0%	0.0%
Mean	6.0	5.9	.	5.9
Median	6	6	.	6
Count	8	9	0	17

