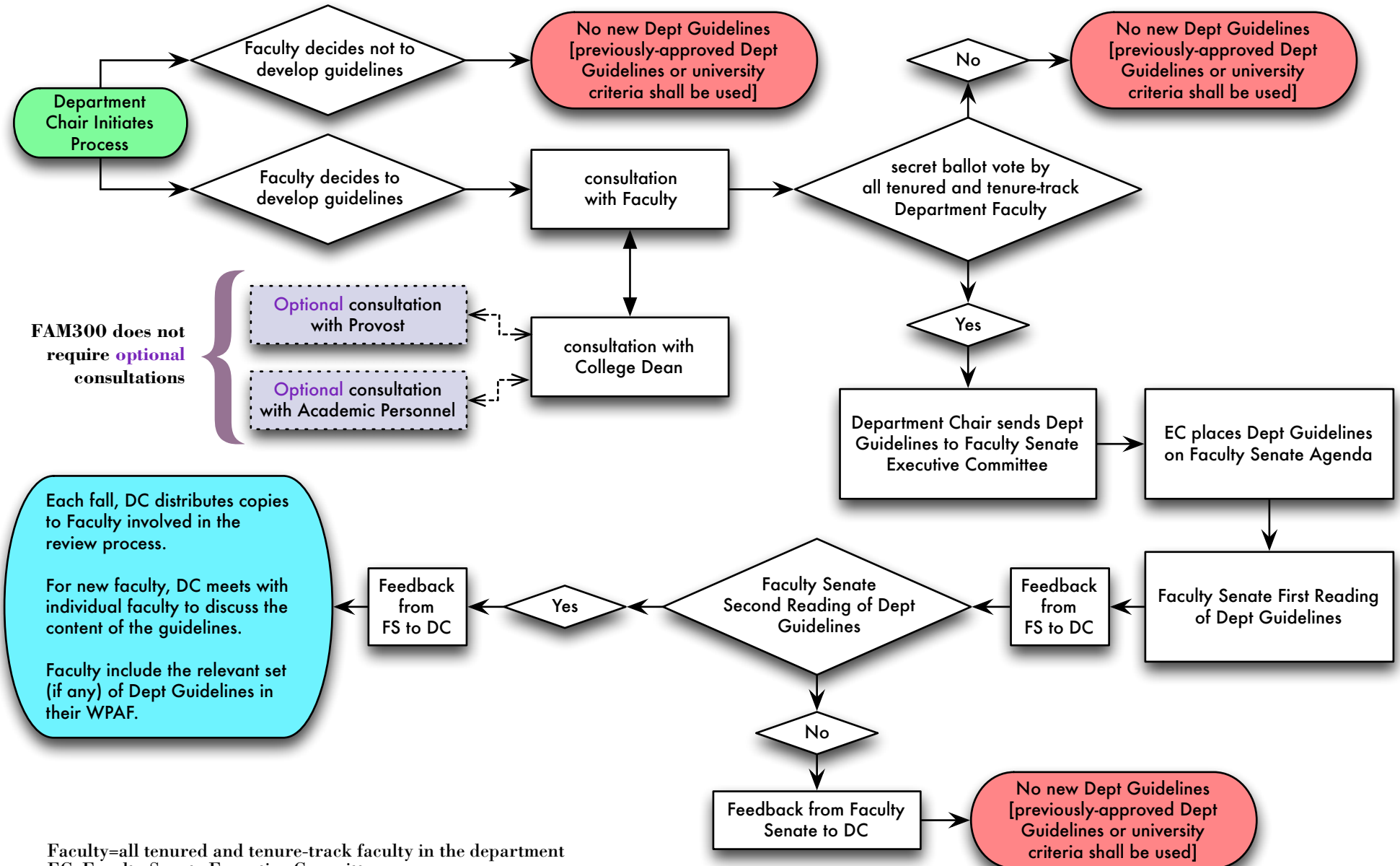


Approval Procedure for Department Evaluation Guidelines [FAM 300, Chapter 5]



FAM300 does not require optional consultations

Each fall, DC distributes copies to Faculty involved in the review process.

For new faculty, DC meets with individual faculty to discuss the content of the guidelines.

Faculty include the relevant set (if any) of Dept Guidelines in their WPAF.

Faculty=all tenured and tenure-track faculty in the department
 EC=Faculty Senate Executive Committee
 FS=Faculty Senate
 DC=Department Chair
 WPAF=Working Personnel Action File