

# Campus Accessibility Guide



## About This Guide

California State University, San Bernardino offers a wide range of services to individuals with disabilities. This accessibility guide is designed to help individuals with disabilities navigate safely throughout the CSUSB campus. Inside, you will find valuable information, including locations of accessible parking, exterior paths of travel and accessible entrances to building facilities, along with policies, emergency evacuation procedures, areas of refuge and descriptions of a wide range of facilities and services available to students, faculty, staff and visitors with disabilities.

Information contained in this guide is available in print and online at <http://www.csusb.edu/AccessibilityGuide.pdf>. Throughout this guide you will find references to various offices and departments on campus that may be able to provide additional information. We welcome and encourage you to contact any of these offices directly with any questions or concerns you may have regarding policies or accessibility issues. Although we have made every effort to include the most up-to-date policies and information, individual policies, office hours and services may change from time to time. Offices and departments responsible for the services/policies in question will be able to provide the most current information, which supersedes the information contained within this access guide.



- AD Administration
- AF Auto Fleet Services
- AH Animal House/ Vivarium
- AR Academic Research
- AS Administrative Services
- AV Arrowhead Village Housing
- BI Biological Sciences
- BK Coyote Bookstore
- CC Children's Center
- CE College of Education
- CH Chaparral Hall
- CO Commons
- CS Chemical Sciences
- DD Univ. Center for Developmental Disabilities
- ES Environ. Health & Safety

- FM Facilities Planning & Mgmt.
- FO Faculty Office Building
- HA HVAC Central Plant
- HC Student Health Center
- HP Health & PE Complex/ Cousouslis Arena
- IC Information Centers
- JB Jack H. Brown Hall
- OB Murillo Family Observatory
- PA Performing Arts/ Theatre/ Rectal Hall
- PE Physical Education
- PK1 Parking Structure West
- PK2 Parking Structure East
- PL John M. Pfau Library
- PS Physical Sciences
- PW Plant/Central Warehouse
- RF Student Rec. & Wellness Ctr.
- SB Social & Behavioral Sciences
- SH Sierra Hall
- SU Santos Manuel Student Union
- SV Serrano Village
- TC Temp. Classrooms
- TK Temp. Kinesiology Annex
- TO Temp. Offices
- UE University Enterprises
- UH University Hall
- UP University Police
- UV University Village
- VA Visual Arts Center/Robert & Frances Fullerton Museum of Art
- YC Yasuda Ctr. for Ext. Learning

# Campus Evacuation Sites

Racks

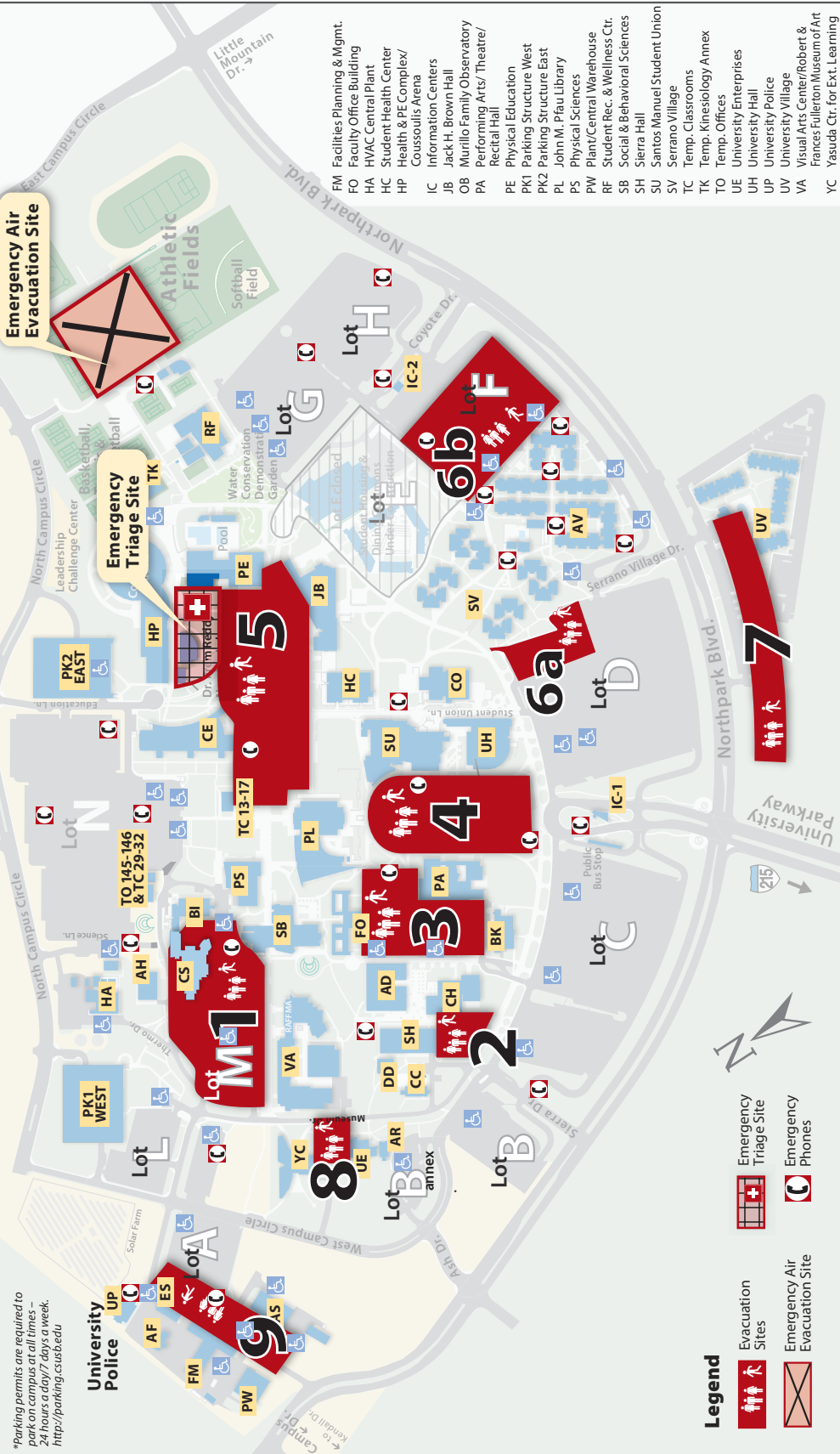
CALIFORNIA STATE UNIVERSITY  
**SAN BERNARDINO**

5500 University Parkway, San Bernardino, CA 92407-2393  
(909) 537-5000 • <http://www.csusb.edu>

Campus Map 2016

\*Parking permits are required to park on campus at all times - 24 hours a day/7 days a week. <http://parking.csusb.edu>

Aug. 22, 2016



- Legend**
- Evacuation Sites
  - Emergency Triage Site
  - Emergency Air Evacuation Site
  - Emergency Phones

# CSUSB Evacuation Chair Location Report

Building	Stairwell	Floor	Model
Biological Sciences	South	2	MKIII
Biological Sciences	1	2	MKIII
Chemical Sciences	1	3	MKII
Chemical Sciences	2	3	MKII
Chemical Sciences	7	3	MKII
College of Education	West 1	3	MKIII
College of Education	West 2	3	MKIII
College of Education	West 3	3	MKIII
Commons	Patio	2	MKIII
Faculty Offices	2	1	MKIII
Health / Arena	1	1	MKIII
Health / Arena	2	B	MKII
Jack Brown	1	3	MKIII
Jack Brown	2	2	MKIII
Jack Brown	2	3	MKIII
Jack Brown	3	5	MKIII
Jack Brown	4	3	MKIII
Performing Arts	Elev	2	MKII
Pfau Library	5	5	MKII
Pfau Library - Class	East	2	MKIII
Pfau Library - Wedge	9	2	MKII
Physical Sciences	2	1	MKIII
Physical Sciences	3	2	MKIII
Physical Sciences	4	2	MKIII
Recreation Center	2	2	MKIII
Social & Behavioral Sci	Foyer, Women's Restroom	1	MKII
Social & Behavioral Sci	Foyer, Women's Restroom	2	MKII
Social & Behavioral Sci	Foyer, Women's Restroom	3	MKII
Social & Behavioral Sci	Foyer, Women's Restroom	4	MKII
Social & Behavioral Sci	Foyer, Women's Restroom	5	MKII
Social & Behavioral Sci	Foyer, Women's Restroom	B	MKII

Building	Stairwell	Floor	Model
Student Union	Elev 1	2	MKIII
Student Union	Elev 3	2	MKIII
University Hall	2	3	MKIII
University Hall	3	3	MKIII
University Hall	4	3	MKIII
University Hall	5	2	MKIII
University Hall	6	4	MKIII
Visual Arts / Museum	South	2	MKIII
Visual Arts / Museum	1	3	MKII
Visual Arts / Museum	2	3	MKIII

Updated: April 2009

An **evacuation chair** is a quick and safe method to evacuate individuals with disabilities such as wheel chair users or individuals who may have been injured down stairs during an emergency such as an earthquake or a fire when elevators should not be used. The table below shows the location of evacuation chairs in the various buildings throughout CSUSB.

# Table of Contents

- Quick Reference Contacts ..... 4
- Emergency Code Blue Phones ..... 6
- Disruption Plan Policy ..... 7
- Services to Students with Disabilities ..... 9
- Getting to Campus ..... 13
- Campus Closure Procedures ..... 14
- Parking and Transportation Services ..... 17
- Accessible Parking Locations ..... 18
- Emergency Evacuation Policies & Procedures ..... 20
- Emergency Notification System ..... 27
- About Individual Building Pages ..... 28

# Quick Reference Contacts

## Emergencies DIAL 911

**Services to Students with Disabilities**

**(909) 537-5238**

**TTY Phone**

**(909) 537-7230**

Main Campus

(909) 537-5000

Campus Police (non-emergency)

(909) 537-5165

TTY/TDD Equipped

Academic Technology and Innovations

(909) 537-7439

Admissions and Student Recruitment

(909) 537-5188

Advising and Academic Services

(909) 537-5034

Assistive Technology and Accessibility Center

(909) 537-5079

Associated Students, Inc.

(909) 537-5932

Athletics

(909) 537-5011

Career Development Center

(909) 537-5250

Children's Center

(909) 537-5928

Community Counseling Center

(909) 537-5569

Coyote Bookstore

(909) 537-5966

Coyote One Card

(909) 537-7677

Creative Media Services

(909) 537-5619

Dining Services

(909) 537-7159

Event Scheduling

(909) 537-5236

Facilities Planning, Design and Construction (FPDC)

(909) 537-5136

Facilities Services

(909) 537-5166

Financial Aid

(909) 537-5227

Housing and Residential Life

(909) 537-4155

Human Resources

(909) 537-5138

John M. Pfau Library

(909) 537-5102

Office of the Registrar

(909) 537-5200

Ombuds Services

(909) 537-5635

Palm Desert Campus (PDC)

(909) 537-8100

Parking and Transportation Services

(909) 537-5912

President's Office

(909) 537-5002

Psychological Services (CAPS)	(909) 537-5040
Santos Manuel Student Union	(909) 537-5940
Strategic Communication	(909) 537-5007
Student Assistance in Learning (SAIL)	(909) 537-5921
Student Engagement	(909) 537-5234
Student Financial Services	(909) 537-5157
Student Health Center	(909) 537-5241
Student Recreation and Wellness Center	(909) 537-2348
Technology Support Center	(909) 537-7677
Telecommunications and Network Services (TNS)	(909) 537-5133
Testing and Tutoring	(909) 537-5038
Univ. Center for Developmental Disabilities (PDC)	(909) 537-5495
University Enterprises Corporation	(909) 537-5918
Web Services	(909) 537-5089
WorkAbility IV	(909) 537-7207
Writing Center	(909) 537-5232

### **COLLEGES**

Arts and Letters	(909) 537-5800
Business and Public Administration	(909) 537-5700
Education	(909) 537-5600
Extended Learning	(909) 537-5975
Natural Sciences	(909) 537-5300
Social and Behavioral Sciences	(909) 537-7500

### **BOX OFFICES**

ASI Box Office	(909) 537-5933
Music Box Office	(909) 537-7516
Robert and Frances Fullerton Museum of Art	(909) 537-7373
Special Events and Guest Services	(909) 537-7360
Theatre Box Office	(909) 537-5884

# Emergency Code Blue Phones

Dedicated emergency phones can be found at various outdoor locations throughout campus. These phones are push-button operated and are topped by distinctive blue lights for easy identification. They provide a direct connection to University Police and should be used to report suspicious activity, crimes in progress or any emergency situation. A dispatcher will identify the location of the phone being used (even if nothing is said by the user) and will dispatch police personnel as necessary. Emergency phones are also located in all campus elevators. Dialing 9-1-1 on any campus phone will also connect the user directly to University Police.

## Emergency Phone Locations\*:

- Parking Lots A (2 phones), F, G, H
- Sierra Drive between Lots B and C
- Coyote Drive near Information Center
- University Police Office
- University Parkway near Information Center
- Sierra Hall
- Biology Building
- Social and Behavioral Sciences Building
- Temporary Classrooms and Offices
- Performing Arts Building
- Santos Manuel Student Union
- Murillo Family Observatory
- Commons Building
- Student Recreation and Wellness Center
- Serrano Village
- Arrowhead Village (5 phones)
- East and West Parking Structures (multiple phones)



*\*Phones are located at or near these locations. Please see map on page 62 for more details.*

*All phones are wheelchair accessible.*

## TTY/ TDD/ Video Phones

TDD phones are located on the first floor of the Pfau Library and in the lobby on the first floor of University Hall. A TTY phone is located at the SSD office (UH-183). Four video phones for the hearing impaired are located on the second floor of the Pfau Library, in the Services to Students with Disabilities (SSD) office in University Hall and at the Office of Housing and Residential Life. For more information on video phones, please contact the SSD office.



# Disruption Plan Policy

Construction activities performed by campus workers or outside contractors can present challenges to maintaining campus pedestrian and/or vehicular movement. These disruptions can range from short durations to longer periods of time depending on the scope of the work being performed. Such construction-related activities must be planned so as to minimize duration and to maintain the safety and functionality of the campus community.

## Disruption Plan

A disruption plan must be prepared in advance of any construction activity and shall be submitted by the architect(s) to Facilities Planning, Design and Construction (FPDC) for review and approval. Where possible, a schedule indicating when and how long the disruption will likely be in effect should also be prepared.

The Disruption Plan should include the following:

- Geographical location using the campus base map;
- Identification of pedestrian paths that will become inaccessible;
- Vehicular paths to be closed and out of service;
- Construction site access required or planned for use by construction-related traffic;
- Extent of construction site boundary;
- Barrier type and location to be in place to ensure safety of campus community and security of the construction activity;
- Provision for notification of the campus community for planned intermittent or isolated periods, where disruption is temporary;
- Designated alternate paths for pedestrians and vehicles during the disruption period;
- Provision for service access, deliveries, and other vendor vehicles to reduce impact to campus operations.

## Process

A prepared plan and schedule shall be submitted to FPDC for evaluation a minimum of one month prior to the start of construction activity. Once the plan is approved by FPDC it will be distributed to the offices of Services to Students with Disabilities, Facilities Services, University Police, Parking Services, Student Affairs and any departments that may be affected for their review and input. Final approval will be issued by FPDC as appropriate.

## Implementation

Provision of the approved Disruption Plan requirements shall be incorporated into the project construction documents and/or Contract Special Conditions prior to bidding. An implementation schedule with initiation date and duration of disruption shall be provided a minimum of one calendar week or five working days to allow notification of the following groups:

- All students
- Faculty and staff
- Service providers and vendors
- University Police Department

## Notification Methods

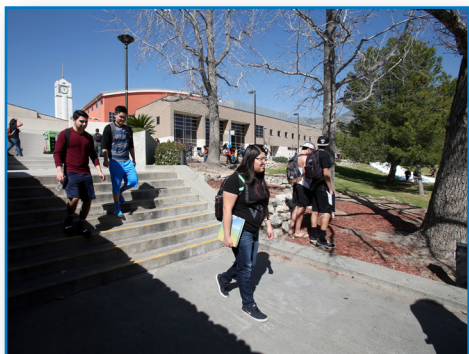
The implementation schedule will be provided for posting or distribution via the following methods:

- FPDC Website
- SSD Office
- Email channels (Campus list serve, etc.)

## Reporting Physical Barriers to Accessibility

Architectural or other physical barriers to accessibility that are identified on campus should be reported to the campus Facilities Management Department. This can be accomplished by:

- Submitting an online work request via the Facilities Management iService Desk online work order system at: <http://facilities.csusb.edu> This service is available 24 hours a day, and users will receive an automated work request number as a courtesy response;
- Calling the Facilities Management Support Center at (909) 537-5175 (extension 75175 if dialing from a campus phone);
- Advising the Office of Services to Students with Disabilities (SSD);



# Services to Students with Disabilities

**Location:** University Hall, Room 183

**Phone:** (909) 537-5238

**Website:** <http://ssd.csusb.edu>

**TTY:**(909) 537-7230

**Email Address:** [ssd@csusb.edu](mailto:ssd@csusb.edu)

**Fax:**(909) 537-7090

## Mission Statement

The Office of Services to Students with Disabilities (SSD) strives to empower students with disabilities by fostering skills of self-advocacy, resourcefulness, and independence. The SSD office works collaboratively with the campus community to remove barriers and promote an enriched learning environment where students with disabilities can utilize their skills and pursue their academic and personal development goals.

## Strategies include but are not limited to:

- Providing support services for students who have permanent or temporary disabilities;
- Advocating with and for individuals with disabilities on campus and in the community;
- Working for social changes;
- Promoting and coordinating systematic institutional initiatives for ensuring complete university programmatic and environmental access for individuals with disabilities;
- Distributing accurate information about disabilities; and,
- Serving as a resource for those who study the sociological, psychological, and environmental aspects of the culture of people with disabilities.

**Disabilities that qualify for services may include:** learning; physical; deaf and hard of hearing; visual and communication impairments; psychological and other functional limitations. In order to ensure appropriate accommodations, needs are assessed on an individual basis. Students seeking services from SSD must submit documentation from a licensed healthcare professional that verifies their disability; however, those students with a temporary physical condition (i.e., broken leg) can be visually verified by SSD staff and authorized services for up to one quarter.



## Office Hours of Operation

During the regular academic year of September through June, SSD office hours are:

**Monday-Thursday: 8:00 a.m. to 5:30 p.m.**

**Friday: 8:00 a.m. to 5:00 p.m.**

During the summer, SSD office hours are:

**Monday-Thursday: 7:00 a.m. to 5:30 PM Friday, Saturday and Sunday: CLOSED**

*\*Testing and Mobility Services are available Monday through Thursday after hours and on Saturdays at the San Bernardino Office, please call for more information.*

*\*\*The SSD Office observes all campus closures.*

For more information, please contact Services to Students with Disabilities.

## Cart Transportation Assistance for Students

The Services to Students with Disabilities (SSD) office provides drop-off and pick-up services via six-passenger, wheelchair-accessible electric carts that are available to qualified students with temporary or permanent disabilities. This is an on-campus service to transport students to and from buildings when necessary.

To be eligible for this service, students must have a disability-related need that has been verified by a licensed medical professional. Registration with the SSD office and verification of disability are required before service can begin.

Contact the SSD office to coordinate times and designated pick-up locations.



## General Cart Transportation Assistance Policies

- Unscheduled cart service may be limited at times of heavy demand. Urgency of need, as determined by the SSD office, will dictate priority of use.
- Mobility assistants will wait no more than 4 minutes at designated pick-up points for scheduled cart service.
- Students using this service must inform the SSD office at least 30 minutes in advance if they will not need cart services as arranged.
- Services will be suspended after two “no-shows” until the student confers with the SSD office

## High Wind Conditions

In the event of strong winds, it may be necessary to lock all north facing doors for the students’ safety. If this is the case, the cart transportation services for students will continue uninterrupted. If required, the

SSD driver may assist a student to the door. If the winds are severe, it may be necessary to discontinue cart transportation assistance for students. If this happens, SSD will contact students on the schedule to make alternate arrangements and will work with students regarding any missed class time. Please refer to pages 25-26 for additional information on high wind condition procedures.

Contact the SSD office for full details regarding cart transportation assistance.

### **Drop-Off and Pick-up Areas**

There are 19 cart pick-up and drop-off areas located throughout campus (please refer to the map on next page for more details).

1. University Hall (south entrance)
2. Serrano Village (north side)
3. Jack Brown Hall College of Business and Public Administration (south entrance)
4. Health and Physical Education (south entrance)
5. Pfau Library (northwest entrance)
6. Physical Science Building (south entrance)
7. Temporary Classrooms (north side)
8. Biological Science and Chemical Science Buildings (south entrance)
9. Social and Behavioral Sciences Building (north entrance)
10. Visual Arts Building (north entrance)
11. Chaparral Hall (north entrance)
12. Coyote Bookstore (south entrance)
13. Performing Arts Building (east entrance)
14. Front of university by the flag pole
15. Arrowhead Village (north entrance of Redwood building #4)
16. College of Education (south entrance)
17. Student Recreation and Wellness (south entrance)
18. Student Health Center (south entrance)
19. Physical Education Building (north entrance)

### **Roadways and Vehicle-Accessible Areas**

All members of the university faculty and staff wishing to utilize a state vehicle, electric cart, or any vehicle for work-related travel, must attend special training and must have a valid Defensive Driver's Training card. All individuals should exercise caution when traveling on or near roadways and in any areas accessible by vehicles.



- AD Administration
- AF Auto Fleet Services
- AH Animal House/Vivarium
- AR Academic Research
- AS Administrative Services
- AV Arrowhead Village Housing
- BI Biological Sciences
- BK Coyote Bookstore
- CC Children's Center
- CE College of Education
- CH Chaparral Hall
- CO Commons
- CS Chemical Sciences
- DD Univ. Center for Developmental Disabilities
- ES Environ. Health & Safety
- FM Facilities Planning & Mgmt.

- FO Faculty Office Building
- HA HVAC Central Plant
- HC Student Health Center
- HP Health & PE Complex/Coussoullis Arena
- IC Information Centers
- JB Jack H. Brown Hall
- OB Murillo Family Observatory
- PA Performing Arts/Theatre/Recital Hall
- PE Physical Education
- PK1 Parking Structure West
- PK2 Parking Structure East
- PL John M. Pfau Library
- PS Physical Sciences
- PW Plant/Central Warehouse
- SB Student Rec. & Wellness Ctr. Social & Behavioral Sciences/Anthropology Museum
- SH Sierra Hall
- SU Serrano Manual Student Union
- SV Serrano Village
- TC Temp. Classrooms
- TK Temp. Kinesiology Annex
- TO Temp. Offices
- UE University Enterprises
- UH University Hall
- UV University Village
- VA Visual Arts Center/Robert & Frances Fullerton Museum of Art
- YC Yasuda Ctr. for Ext. Learning

- Legend**
- Disability/Medical Parking Areas
  - Emergencies
  - Bicycle Racks
  - Cart Stop
  - Information Center (IC)
  - Parking Permit
  - Dispensers\*

  
**CALIFORNIA STATE UNIVERSITY  
SAN BERNARDINO**  
 5500 University Parkway, San Bernardino, CA 92407-2393  
 (909) 537-5000 • <http://www.csusb.edu>

Campus Map 2016

Oct. 11, 2016  
 \*Parking permits are required to park on campus at all times - 24 hours a day/7 days a week. <http://parking.csusb.edu>

- Cart Service Stops**
- 1-UH University Hall
  - 2-SV Serrano Village
  - 3-JB Jack H. Brown Hall
  - 4-HP Health & PE Complex/Coussoullis Arena
  - 5-PL John M. Pfau Library
  - 6-PS Physical Sciences
  - 7-TC Temporary Classrooms
  - 8-BI/CS Biological Sciences/Chemical Sciences
  - 10-SB Social & Behavioral Sciences
  - 10-VA Visual Arts Center/RAFFMA
  - 11-CH Chaparral Hall
  - 12-BK Bookstore
  - 13-PA Performing Arts/Theatre/Recital Hall
  - 14-PP Flag Pole
  - 15-AV Arrowhead Village Housing/Bldg. 4
  - 16-CE College of Education
  - 17-RF Student Recreation & Fitness Center
  - 18-HC Health Center
  - 19-PE Physical Education

# Getting to Campus

## From Interstate 215 at University Parkway

Exit the freeway and travel one mile north/northeast to the end of University Parkway, which becomes the main entrance to CSUSB (at Northpark Boulevard). Ahead and to your left will be the Parking Services Information Booth.

## From Nearby Metro Areas & Freeways

**Ontario International Airport:** Take I-10 East, to I-215 North. Exit at University Parkway in San Bernardino and turn right.

**Los Angeles International Airport:** Take I-405 North, to I-10 East, to I-215 North. Exit at University Parkway in San Bernardino and turn right.

**Pasadena:** Take I-210 East to I-215 North. Exit at University Parkway in San Bernardino and turn right.

**Orange County:** Take Highway 91 East, which becomes I-215 North in Riverside. Continue on I-215, and exit at University Parkway in San Bernardino and turn right.

**Riverside:** Take Highway 91 East, which becomes I-215 North in Riverside. Continue on I-215, and exit at University Parkway in San Bernardino and turn right.

**High Desert areas:** Take I-15 South, to I-215 South. Exit at University Parkway in San Bernardino and turn left.

**Palm Springs area:** Take I-10 West, to I-215 North. Exit at University Parkway in San Bernardino and turn right.

**San Diego area:** Take I-15 North, to I-215 North. Exit at University Parkway in San Bernardino and turn right.



# Campus Closure Procedures

The university president or designee may authorize a closure of the campus due to a health or safety concern, or due to the interruption or failure of a utility such as electricity or water service. An evacuation may be also declared in the event of a major threat or emergency.

There is a difference between an evacuation and a campus closure. A campus closure occurs when a decision has been made to close the campus because of a specific event, such as high winds or a power outage, which make normal campus operations impossible or unsafe. These are not considered to be immediate emergency situations. An evacuation occurs when it is essential to clear the campus as quickly as possible as in the case of a fire or an earthquake.

Campus communication systems, to the extent possible, will be used to notify the campus community and provide specific information. Notifications will go out via email, text message (if available), public address system, campus phones, and may also be obtained:

- On the marquee located at the University Parkway entrance to campus;
- On the CSUSB website home page at [www.csusb.edu](http://www.csusb.edu);
- By calling the Recorded Emergency Information Hotline at (909) 537-5999 ; and
- By calling the CSUSB main campus phone number at (909) 537-5000.

Should a campus closure be ordered, the administrator in charge may elect to close the campus in the following manner:

1. Unless otherwise noted, classes already in session shall continue until their scheduled conclusion, at which time students will be asked to leave the campus in a safe and orderly manner.
2. Employees will be instructed to remain on campus until after students have exited the campus. Employees will then receive information regarding when they should leave.
3. Students living in campus residence halls may remain in the housing units, unless instructed otherwise.

Students or employees who need transportation or must wait for transportation are asked to report to the main lounge in the Santos Manuel Student Union. Police or parking officers will organize the transportation effort from the Student Union. Should it be determined that the Student Union lounge is not habitable, the alternate transportation location will be the Commons building. Notice will be provided about when the campus will reopen.

## Transit Services

Transit providers, including local Omnitrans buses, Metrolink commuter trains from Los Angeles and Orange counties, and Amtrak trains include stops at or near the CSUSB campus. For specific route and schedule information, please contact:

**Omnitrans:** [www.omnitrans.org](http://www.omnitrans.org)



**Metrolink:** [www.metrolinktrains.com](http://www.metrolinktrains.com)

**Amtrak:** [www.amtrak.com](http://www.amtrak.com)

**SANBAG:** [www.sanbag.ca.gov/commuter](http://www.sanbag.ca.gov/commuter)

**Access Bus:** [www.omnitrans.org/routes/access](http://www.omnitrans.org/routes/access)

## Loading Zones

Designated loading/drop-off zones are located throughout campus and can be distinguished by signage and/or curb markings. All passenger loading/drop-off zones are wheelchair accessible and feature truncated domes for the visually impaired. Vehicles dropping off or picking up passengers need not display a parking permit, but are restricted to a 5-minute time limit, unless otherwise noted. A passenger loading/drop-off zone is located at University Parkway, directly in front of the flagpoles. Additional passenger/ drop-off zones are located near the following buildings:

- Commons/University Hall
- College of Education
- Student Recreation and Wellness Center
- Yasuda Center (College of Extended Learning)



## **Bicycle Racks**

Bicycles should only be locked at bicycle racks that are located throughout the campus. Bicycles may not be locked to or left at railings, hand rails, light poles, landscape or any other object or feature on campus. Bicycles not secured at bicycle racks may be impounded by University Police and Public Safety.

**For additional information on bicycle policies and regulations, please visit:**

**<http://policies.csusb.edu/bicycle.htm>**

*\* Individuals with visual or mobility impairments should always exercise caution around bicycle rack areas.*

# CALIFORNIA STATE UNIVERSITY SAN BERNARDINO

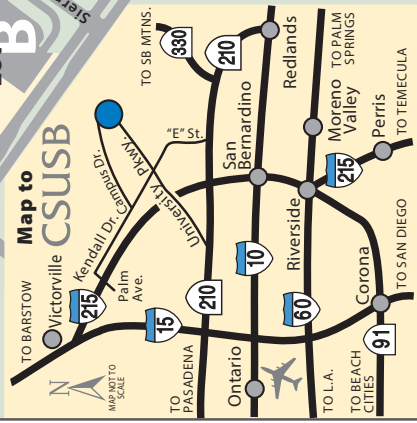
5500 University Parkway, San Bernardino, CA 92407-2393  
(909) 537-5000 • <http://www.csusb.edu>

## Campus Map 2016

Aug. 22, 2016

\*Parking permits are required to park on campus at all times. 24 hours a day 7 days a week. <http://parking.csusb.edu>

- ### Legend
- Disability/Medical Parking Areas
  - Emergency Phones
  - Palm Desert Campus Shuttle
  - Information Center (IC)
  - Parking Permit Dispensers\*
  - Bicycle Racks



- AD Administration
- AF Auto Fleet Services
- AH Animal House/Vivarium
- AR Academic Research
- AS Administrative Services
- AV Arrowhead Village Housing
- BI Biological Sciences
- BK Coyote Bookstore
- CC Children's Center
- CE College of Education
- CH Chaparral Hall
- CO Commons
- CS Chemical Sciences
- DD Univ. Center for Developmental Disabilities
- ES Environ. Health & Safety

- FM Facilities Planning & Mgmt.
- FO Faculty Office Building
- HA HVAC Central Plant
- HC Student Health Center
- HP Health & PE Complex/Coussoulis Arena
- IC Information Centers
- JB Jack H. Brown Hall
- OB Murillo Family Observatory
- PA Performing Arts/Theatre/Recital Hall
- PE Physical Education
- PK1 Parking Structure West
- PK2 Parking Structure East
- PL John M. Pfau Library
- PS Physical Sciences
- PW Plant/Central Warehouse
- RF Student Rec. & Wellness Ctr.
- SB Social & Behavioral Sciences
- SH Sierra Hall
- SU Santos Manuel Student Union
- SV Serrano Village
- TC Temp. Classrooms
- TK Temp. Kinesiology Annex
- TO Temp. Offices
- UE University Enterprises
- UH University Hall
- UP University Police
- UV University Village
- VA Visual Arts Center/Robert & Frances Fullerton Museum of Art
- YC Yasuda Ctr. for Ext. Learning

# Parking and Transportation Services

**Location:** University Hall 039

**Phone:** (909) 537-5912

**Fax:** (909) 537-7087

**Website:** <http://parking.csusb.edu>

**Email Address:** [parking@csusb.edu](mailto:parking@csusb.edu)

## Office Hours of Operation

**Monday-Friday** – 8:00 a.m. to 5:00 p.m.

**During the summer** – 7:00 a.m. to 5:30 p.m.

## Information Services Hours of Operation

**Monday-Thursday** – 7:00 a.m. to 7:00 p.m.

**Friday** – 7:00 a.m. to 5:30 p.m.

**Saturday** – 7:00 a.m. to 3:00 p.m.

## Parking Permits

A vehicle must display a CSUSB parking permit when parked at the campus, and parking is enforced at all times, 24-hours a day, 7-days a week. The only exception to this regulation is when a vehicle parks in a time-controlled space, such as those spaces posted for 30-minute or 20-minute parking.

## Visitor Disabled Parking

Visitors who have been issued a disabled placard by the DMV must display the placard in clear view when parked in a disabled parking space. Disabled visitors do not need to display an additional parking permit when parked in disabled spaces, and may obtain a complimentary day pass at either of the information centers. CSU employees and students are required to purchase and display their personal parking permit along with their DMV-issued placard when parked in disabled spaces on campus.

## Disabled Parking Spaces

Disabled parking spaces are located in every campus parking lot and both parking structures.

*Note: No vehicle shall be parked in, obstruct, block or otherwise bar access to parking disabled parking spaces.*



# Accessible Parking Locations

<b>Building Code</b>	<b>Building</b>	<b>Location</b>
AD	Administration	Lot C
AF	Auto Fleet Services	Lot A
AH	Animal House/ Vivarium	PK1 West, Lot N
AR	Academic Research	Lot B Annex
AS	Administrative Services	Lot A
AV	Arrowhead Village Housing	Lots D, F
BI	Biological Sciences	Lot L, Lot N, PK1 West
BK	Coyote Bookstore	Lot C
CC	Children's Center	Lots B, C
CE	College of Education	Lot N, PK2 East
CH	Chaparral Hall	Lot B, C
CO	Commons	Lot D
CS	Chemical Sciences	Lot L, Lot N, PK1 West
DD	University Center for Developmental Disabilities	Lot B, B Annex
ES	Environ. Health & Safety	Lot A
FM	Facilities Planning and Management	Lot A
FO	Faculty Office Building	Lots B, C
HA	HVAC Central Plant	Lot L, Lot N, PK1 West
HC	Student Health Center	Lots D
HP	Health & PE Complex/ Coussoulis Arena	PK2 East
JB	Jack H. Brown College of Business and Public Administration	
OB	Murillo Family Observatory	Lot OB
PA	Performing Arts/ Theatre/ Recital Hall	Lot C
PE	Physical Education	Lots G
PL	John M. Pfau Library	Lots C, D, N
PS	Physical Sciences	Lot L, PK1 West
PW	Plant/ Central Warehouse	Lot A
RF	Student Rec. & Wellness Ctr.	Lot G

<b>Building Code</b>	<b>Building</b>	<b>Location</b>
SB	Social & Behavioral Sciences	Lots C, M
SH	Sierra Hall Lot C	
SU	Santos Manuel Student Union	Lot D
SV	Serrano Village	Lots D
TC	Temp. Classrooms	PK2 East
TK	Temp. Kinesiology	Lot G
TO	Temp. Offices	Lot L, PK1 West
UE	University Enterprises	Lot B Annex
UH	University Hall	Lot D
UP	University Police	Lot A
UV	University Village	Lot UV (Front)
VA	Visual Arts Center/ Robert & Frances Fullerton Museum of Art	Lot M
YC	Yasuda Ctr. College for Extended Learning	Lot B Annex



# Emergency Evacuation Policies & Procedures

California State University, San Bernardino established an emergency evacuation policy to provide information and guidelines to all members of the university community regarding safe and orderly evacuation of buildings in the event of an emergency. We are committed to providing a safe environment for CSUSB's students, staff, faculty and visitors. Your assistance in the full exercise of this policy could help save your life or someone else's.

This policy was developed based upon the experience of this and other institutions, fire departments, and other resources.

## Policy Statement

CSUSB, in accordance with California law, requires all persons to leave any facility where an emergency evacuation alarm is activated as promptly as possible via the nearest available exit. If an alarm has not been activated, but it becomes clear that an emergency exists, all persons must leave immediately. Alarm pull stations should be activated upon exit.

No one is expected to endanger themselves in order to effect or assist with evacuation of others, but everyone has a duty to ensure that other occupants are aware of an emergency. Similarly, it is expected that individuals will, to the best of their ability, aid anyone requiring assistance to evacuate safely.

## Emergency Evacuation

CSUSB has adopted a system of evacuation management that will be specifically designed for each building. Each building will have an Emergency Action Plan (EAP) and individuals who function as building or floor marshals. During an evacuation the marshals, using the EAP as a reference tool, will systematically scan their areas to ensure everyone has evacuated and report to the next level marshal. The responsibilities of these marshals are explained in the Campus Emergency Management Plan <http://riskmanagement.csusb.edu/emergencymanagement/>.



The emergency evacuation alarm systems in most university facilities include visual and/or audible signaling devices, which should alert sensory impaired persons to alarm conditions. If, while evacuating, you notice someone not responding to the alarm, please be sure they are aware of the emergency.

Areas of Refuge have been identified (typically near emergency egress stairways) within each CSUSB building requiring an area of refuge. These areas can be reached by wheelchair users on their own. Once there, they can await assistance from rescue personnel in a position which does not impede or prevent emergency egress by other occupants.

## **Buildings with Areas of Refuge:**

- Biological Sciences Building
- Faculty Office Building
- Jack Brown Hall College of Business and Public Administration
- University Hall

*See the individual building pages beginning on Page 28-61 for exact locations.*

## **Emergency Evacuation Signs**

Signs should be posted by each elevator, with a floor plan indicating the location of exit stairways and the location of the closest Area of Refuge, if any.

For additional information and to find out who is the designated floor marshal for a particular location, please contact the office of Emergency Management at (909) 537-7477.

## **Evacuation Policy for Individuals with Disabilities**

The evacuation of individuals with disabilities will be given the highest priority in emergency situations. Students/employees with disabilities, building marshals, floor wardens and emergency workers shall familiarize themselves with these procedures in advance of an emergency situation so that they will be prepared to perform evacuation procedures during an emergency. Other individuals with disabilities who may be visiting are encouraged to familiarize themselves with campus evacuation procedures and will be assisted to the extent possible.

**The following general guidelines apply to all emergencies and should be followed by the university designated evacuation team as soon as an evacuation has been ordered:**

- Consult with any individual who may have difficulty exiting a building. Determine if the individual has a buddy system in place. Ask the individual if s/he will be able to exit the building without assistance (e.g., a wheelchair user in a classroom on an upper floor of a building) and if not, how to best assist BEFORE making a rescue attempt. Also ask the individual if any mobility aids/medical equipment/medications/personal care items should be removed from the building as well. For example, an individual's wheelchair should be removed with the student, when possible, as it will be needed for the individual's immediate use upon exit from the building.
- A wheelchair evacuation should be attempted ONLY by those who have had rescue training. Evacuation should not be attempted by a single individual unless necessary as a last resort.
- Call 911 if the situation is life threatening.
- Do NOT use elevators unless authorized to do so by police or fire personnel. Elevators could fail during a fire, earthquake or flood.
- All multiple story buildings are equipped with emergency evacuation chairs. The chairs can be used by individuals trained to use them. Please refer to page 64 for a list of evacuation chair locations.



## Direct Emergency Response by Disability

### Visual Impairment

- Review the nature of the emergency with the individual and inquire as to the best manner in which to assist. In most cases, blind individuals will appreciate others offering their elbow (this is the preferred method when acting as a “Sighted Guide”). Do NOT grasp a visually impaired person’s arm unless asked to do so.
- As individuals are walking, offer verbal information about location, the route you are following, the presence of any obstacles (e.g., stairs, overhanging objects, uneven pavement, curbs, and narrow passageways). Use compass or clock directions and estimated distances as much as possible.
- Upon arrival at the designated Emergency Assembly Point, orient the individual as to location on campus and offer further assistance as needed.
- Some visually impaired individuals may have guide dogs that can become disoriented or injured during an emergency. Attempt to evaluate the dog’s needs and offer assistance if possible.
- White canes and other mobility aids should be moved with the individual, if possible.

### Deafness or Hearing Loss

- Individuals with impaired hearing may or may not be able to hear the audible emergency alarms, depending on the level of hearing loss. Most university buildings are equipped with visual (flashing light) evacuation alarms. An individual with a hearing impairment may not perceive that an emergency exists. An alternative warning technique may be required. One such alternative involves gaining attention by turning the lights on and off and using hand gestures or a written note to describe the emergency and the evacuation route, e.g., “Fire – go out the rear door to parking lot.”
- Ongoing visual instructions may be needed along the evacuation route. It may be necessary to point in the direction of the exit or use an evacuation map in order to advise individuals with impaired hearing of the safest evacuation routes.
- It is important to note that individuals with hearing impairments sometimes have voice/speech impairments as well. They may be carrying or using a whistle or have some other means of attracting the attention of others.

### Mobility Impairments

- Most individuals with mobility impairments will be able to safely exit a one-story building without assistance. Individuals who have difficulty opening doors or encounter obstructed pathways should ask their buddy or other individual(s) around him/her for assistance or call

911 from a working telephone for assistance. Individuals on or above the second floor or in the basement of a building may require varying levels of evacuation assistance.

- If an individual with a mobility impairment is unable to exit a building safely, an attempt should first be made to help direct him/her to the Area of Refuge to await assistance from emergency personnel. If there is no Area of Refuge, or the area is obstructed, the individual should be directed to a safe area to await assistance from emergency personnel. A safe area might include the end of the building near an exit opposite the emergency hazard, an enclosed stairwell or a classroom with a closed door. It may be necessary, if possible, to clear the individual's path.
- In general, individuals with mobility impairments should NOT be evacuated by untrained personnel. However, if an individual is in immediate danger and cannot be moved to a safer area to wait for assistance, the situation may become urgent, making it necessary to evacuate using a carrying option or an evacuation chair. Carrying options include using a two-person lock-arm position or using a sturdy chair, preferably a chair with arms. Every attempt should be made to properly secure the individual in the chair. Using a seatbelt or belt can be useful, if available. Before making this type of rescue attempt, always ask the individual as to the preferred method of assistance. This is essential because moving and lifting individuals with certain types of disabilities can result in serious injury to the individual.

**Always consult the individual as to preference with regard to:**

1. Actual method of removal from wheelchair.
2. Number of persons generally required for safe removal from the wheelchair.
3. The advisability of lifting/moving extremities due to the potential for pain or spasticity due to the presence of braces, catheter leg bags, etc.
4. The need to bring along (and possibly detach) mobility aids/medical equipment/medications/personal care items (for example, an oxygen tank, catheter bag or rescue inhaler).
5. The need for a seat cushion or pad to be brought along after the individual has been removed from the wheelchair.
6. The advisability of being carried downstairs in a forward or backward position.
7. The need for after care. For example, some individuals may require medical treatment after being removed from their wheelchairs.
8. The wheelchair should be evacuated along with the individual, when possible, and should be made available to the individual as soon as possible after evacuation. A wheelchair is essential to a wheelchair user's ongoing safety and mobility.

**Note:** *The evacuation chairs utilized by the university are intended to help the mobility impaired quickly descend the stairwells in the event of an emergency.*

- Individuals who are evacuated will be taken to the designated evacuation area (please refer to page 65) and will be connected with emergency personnel. Accommodations will be made on site as possible and appropriate.
- Some individuals with mobility impairments may also be prone to respiratory complications and will be particularly vulnerable in an emergency involving smoke or fumes. This should be considered during evacuation and shared with emergency personnel.

Police and fire personnel should be immediately notified of any individuals remaining in a building as well as their locations. Emergency personnel will evaluate whether the individual is safe in that location or whether an evacuation is necessary.

### **Power Outages**

- If an outage occurs during the day and an individual with a disability chooses to wait in the building while electricity is being restored, it may be helpful to move near a window where there is natural light and access to a working telephone. Individuals with disabilities are advised to call the University Police Department at (909) 537-5165 to obtain status information about the outage. During regular building hours, building marshals should be notified so they can advise emergency personnel.
- If an individual with a disability would prefer to leave the building and an evacuation has been ordered, or if the outage occurs at night, call the University Police Department at (909) 537-5165 from a campus telephone to request evacuation assistance.
- As soon as information is available, the campus notification systems will provide a recorded message stating when power is likely to be restored.

### **Injured Person**

Injured persons should not be moved unless there is an immediate threat to their lives – then only to nearest ground level exit/stairway. First aid should be given immediately. Make certain the senior building coordinator/team member knows the location of any disabled or injured persons.

The university president or designee may authorize a closure of the campus due to a health or safety concern or due to the interruption or failure of a utility such as electricity or water service. An evacuation may be also declared in the event of a major threat or emergency.

There is a difference between an evacuation and a campus closure. A campus closure occurs when a decision has been made to close the campus because of a specific event, such as high winds or a power outage, which make normal campus operations impossible or unsafe. These are not considered to be immediate emergency situations. An evacuation occurs when it is essential to clear the campus as quickly as possible as in the case of a fire or an earthquake.

Campus communication systems, to the extent possible, will be used to notify the campus community and provide specific information. Notifications will go out via email, text message (if available), public

address system, campus phones, and may also be obtained:

- On the marquee located at the University Parkway entrance to campus;
- On the CSUSB website home page at [www.csusb.edu](http://www.csusb.edu);
- By calling the Recorded Emergency Information Hotline at (909) 537-5999 ; or
- By calling the CSUSB main campus phone number at (909) 537-5000.

Should a campus closure be ordered, the administrator in charge may elect to close the campus in the following manner:

1. Unless otherwise noted, classes already in session shall continue until their scheduled conclusion, at which time students will be asked to leave the campus in a safe and orderly manner.
2. Employees will be instructed to remain on campus until after students have exited the campus. Employees will then receive information regarding when they should leave.
3. Students living in campus residence halls may remain in the housing units, unless instructed otherwise.

Students or employees who need transportation or must wait for transportation are asked to report to the main lounge in the Santos Manuel Student Union. Police or parking officers will organize the transportation effort from the Student Union. Should it be determined that the Student Union lounge is not habitable, the alternate transportation location will be the Commons building. Notice will be provided about when the campus will reopen.

## **Hazards**

In the event of strong winds, fire, earthquakes or floods, all persons on campus should take precautionary measures to protect themselves and their property. In such events the University Police, Facilities Services and EHS will determine appropriate actions and attempt to notify campus personnel as soon as possible. Because of our elevation, please be aware that ice does form on campus walkways. It has also been known to snow at CSUSB.

## **High Winds**

The CSUSB campus is located in a geographical area that is often affected by wind conditions because of its proximity to local mountains and passes. The most frequent winds occur from September through March and are typically referred to as Santa Ana winds. These winds vary in intensity based on the existing meteorological conditions, but often have gusts that are capable of causing injury and or property damage.

The CSUSB University Police Department monitors wind/weather reports whenever such conditions

appear to threaten the university community and identifies four stages of sustained wind conditions. The definitions of each condition and appropriate precautions can be found in copies of the Campus Disaster Preparedness Quick Reference Guide that are posted in classrooms, offices, and other conspicuous locations throughout the campus.

**The guide can also be accessed online at:** <http://riskmanagement.csusb.edu/emergencymanagement/preparednessReferenceGuide.html>

During windy conditions, it is often necessary to close, lock, or disable manual and automatically operated building entrance doors throughout campus to prevent personal injury and/or damage to the doors. Students, faculty, staff and visitors should be aware of this fact and be prepared to enter buildings via other entrances during wind conditions. This Campus Accessibility Guide highlights accessible entrances for each building and should serve as a reference to determine alternate accessible entrances during such periods when doors/entrances are closed.

**To mitigate the disruptive effect of door closures:**

- Doors will not be closed or disabled without consideration of the accessibility-related impact of each closure.
- Signs will be posted on each closed door that indicates it is “CLOSED” because of winds and alternate entrances will be identified.
- Facilities Services Support Center will be immediately notified when campus personnel close any accessible entrance.
- Services to Students with Disabilities (SSD) office will be immediately notified of such closures and an email will be sent to the Campus list serve.
- All closed doors/entrances will be reopened as soon as practicable when the windy conditions have been downgraded or winds diminished.
- Facilities Services Support Center will immediately notify the Services to Students with Disabilities (SSD) office and an email will be sent to the Campus list serve when doors/entrances are reopened.



# Emergency Notification System

Cal State San Bernardino has implemented the Connect-ED® service to allow university administration and the University Police Department the ability to reach all students and staff with time-sensitive information during unforeseen events or emergencies using voice, email and text messaging.

During critical situations, CSUSB officials can use the system to broadcast pertinent information and provide details on appropriate response. This information will not be shared with other entities and it will be kept private and confidential. This is used only for Cal State San Bernardino communication purposes.

There is no charge to subscribe to the service, but call and text messaging fees from cellular phone service providers could apply. Please provide your most current contact information by logging into MyCoyote and add any pertinent phone numbers through the self-service pages. If the information that is already listed is incorrect, please update the information.

## Connect-ED Frequently Asked Questions

What is the Cal State San Bernardino Emergency Notification System? It is an emergency messaging system that can simultaneously send safety alerts to phones, email addresses, text/SMS and TTY/TDD devices. It will be used only for emergency communication purposes and for occasional announcements that could be of interest to all or specific parts of the campus community.

Where did you get my contact information? The emergency notification system uses contact information from your MyCoyote account. Updates can be made by visiting MyCoyote (at <http://mycoyote.cms.csusb.edu/>) and accessing the self-service pages.

Am I automatically enrolled to receive messages from the Emergency Notification System? While all faculty, staff and students are automatically enrolled to receive emergency messages, we ask that you log in to MyCoyote to confirm your data. Please provide all of your contact information, including a cell phone, so the university will have more ways to reach you in the event of an emergency. Emergency notification alerts will primarily be used for emergency communication purposes.

What contact data should I provide to Cal State San Bernardino? The alert@csusb service will deliver a pre-recorded message to the following phone types extracted from MyCoyote: main phone number, home phone number, business phone number, cellular phone number, and TDD/TTY device phone number. Campus email addresses will be used for email messages and cellular phone numbers will be used for text messages. The best emergency contact number is probably your cell phone.

How many phone numbers can I put in the Emergency Notification System? Every faculty, staff and student can list phone numbers in the following fields: a main phone, a cell phone, home phone, business phone and TDD/TTY device. A main number is required and can be any primary phone such as your home or cell. Providing your cell phone is recommended so you can receive safety alerts through a text message and a voice message.

# About Individual Buildings

The following pages provide detailed information regarding the various buildings and facilities located throughout the CSUSB campus. They are arranged in alphabetical order by building name, and each feature information regarding accessible outdoor paths of travel, entrances, facilities, chair lifts and locations of any required areas of refuge in each building. Additional information including the number of floors and elevators in the building, building occupants and the year each building was constructed can also be found on these pages.

**Note:** For the purpose of this guide, restrooms, drinking fountains and entrances that meet or exceed the minimum requirements as specified by the Americans with Disabilities Act Accessibility Guidelines and Title 24 of the California Code of Regulations are identified as “accessible.” For more information regarding guidelines, measurements, specifications and other design features, please contact the office of Facilities Planning, Design and Construction.

## Areas of Refuge

Areas of Refuge are designated areas where people who are unable to use stairs may remain temporarily in safety to await further instruction or assistance during an emergency evacuation. These areas are identified in the individual building pages.



## Campus Courtesy Phones

Campus courtesy phones are located in most classrooms, offices and hallways. These are available for making free calls to on-campus offices. Dialing 9-1-1 on any campus courtesy phone will connect the user directly to University Police. The sheer number of phones located throughout campus make it nearly impossible to indicate every individual phone in this guide.

For information regarding courtesy phone locations in specific buildings, please contact the Telecommunications and Network Services office.

## High Winds: North-Facing Doors

The CSUSB campus is located in an area often affected by Santa Ana wind conditions. During high winds, custodial staff may exercise their discretion in closing north-facing doors. All individuals should exercise extreme caution in these conditions and should proceed to the nearest accessible entrance. More information regarding wind closures, construction disruption plan policy and campus evacuation procedures can be found on pages 7-8.

## Academic Research

**Year Built:** 2005

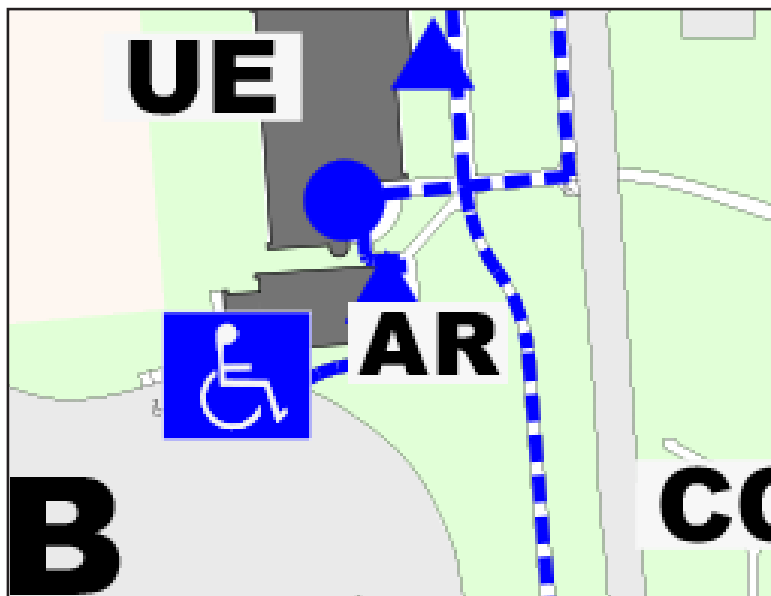
**Number of Floors:** 1

**Map Abbreviation:** AR

**Located in this Building:**  
Academic Research



Feature	Basement	1st Floor	2nd Floor	3rd Floor	4th Floor	5th Floor	Notes
Accessible Restrooms	--	Yes	--	--	--	--	All restrooms in this building are accessible
Accessible Drinking Fountain	--	Yes	--	--	--	--	All drinking fountains in this building are accessible
Accessible Entrance(s)	--	Yes	--	--	--	--	1 accessible entrance on west side of building; another on east side
Area of Refuge	--	N/A	--	--	--	--	
Elevators	--	N/A	--	--	--	--	
Chair Lift	--	No	--	--	--	--	
Evacuation Chair(s)	--	No	--	--	--	--	
Nearest Accessible Parking	Parking Lot B Annex						
Misc.							



### Legend

- Accessible Path of Travel
- Accessible Entrance
- Automatic Accessible Entrance
- Accessible Parking
- Emergency Phone



## Administration Building

**Year Built:** 1965

**Number of Floors:** 1

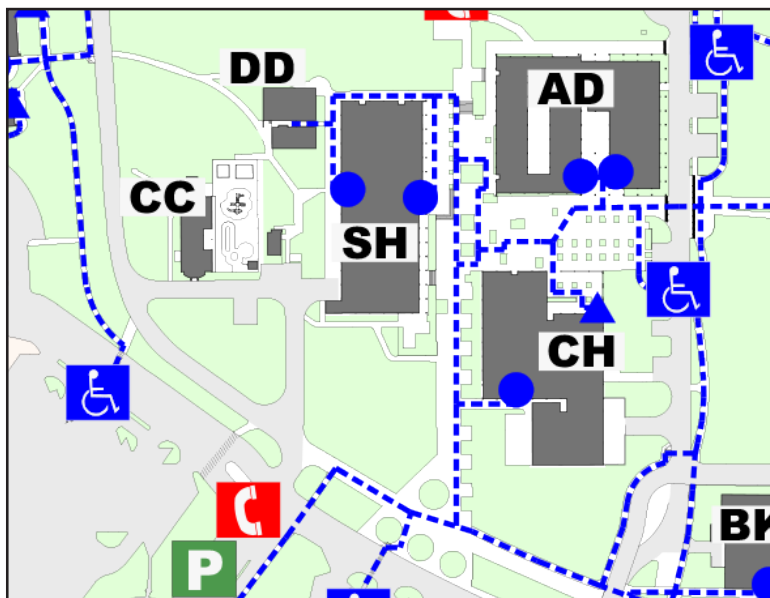
**Map Abbreviation:** AD

**Located in this Building:**

President's Office, Academic Affairs, Graduate Studies, Strategic Communication, Alumni Affairs, University Advancement, McNair Scholarship Program, Institutional Research, Research and Sponsored Programs



Feature	Basement	1st Floor	2nd Floor	3rd Floor	4th Floor	5th Floor	Notes
Accessible Restrooms	--	Yes	--	--	--	--	All restrooms in this building are accessible
Accessible Drinking Fountains	--	Yes	--	--	--	--	All drinking fountains in this building are accessible
Accessible Entrance(s)	--	Yes	--	--	--	--	2 accessible entrances on south side of building (detail below)
Area of refuge	--	N/A	--	--	--	--	Not required
Elevator	--	N/A	--	--	--	--	
Chair Lift	--	No	--	--	--	--	
Evacuation Chair(s)	--	No	-- <td --	--	--		
Nearest Accessible Parking	Parking Lot C, east of the Administration Building						
Misc.							



**Legend**

- Accessible Path of Travel
- ▲ Accessible Entrance
- Automatic Accessible Entrance
- ♿ Accessible Parking
- ☎ Emergency Phone
- P Parking Dispenser

## Administrative Services

**Year Built:** 1999

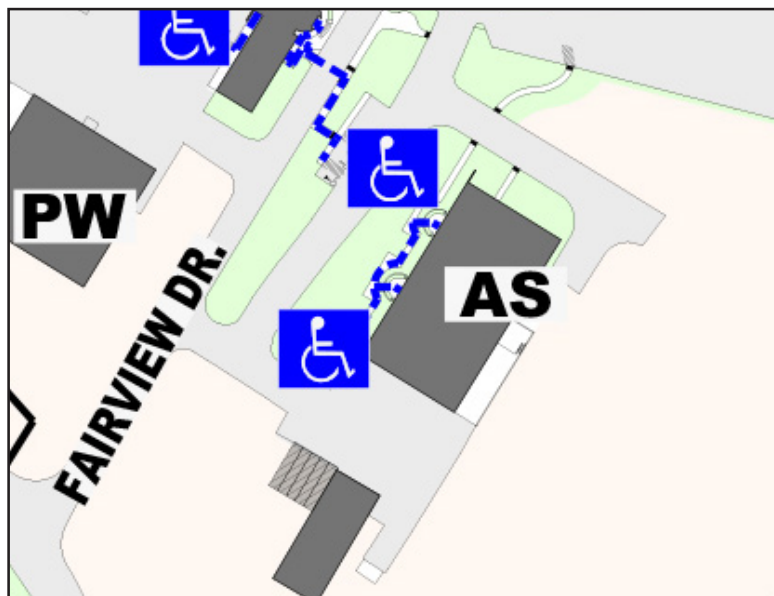
**Number of Floors:** 1

**Map Abbreviation:** AS

**Located in this Building:**  
Printing Services and Mail Services



Feature	Basement	1st Floor	2nd Floor	3rd Floor	4th Floor	5th Floor	Notes
Accessible Restrooms	--	Yes	--	--	--	--	All restrooms in this building are accessible
Accessible Drinking Fountains	--	Yes	--	--	--	--	All drinking fountains in this building are accessible
Accessible Entrance(s)	--	Yes	--	--	--	--	Entrances for this building are accessible
Area of Refuge	--	N/A	--	--	--	--	Not required
Elevators	--	N/A	--	--	--	--	
Chair Lift	--	No	--	--	--	--	
Evacuation Chair(s)	--	No	--	--	--	--	
Nearest Accessible Parking	Parking Lot A, west and North of the Administrative Services Building						
Misc.							



Legend	
	Accessible Parking
	Accessible Path of Travel
	Automatic Accessible Entrance
	Accessible Entrance
	Passenger Loading Zone
	Emergency Phone
	Bus Stop
	Parking Dispenser
	Information Booth

## Animal House / Vivarium

**Year Built:** 1968

**Number of Floors:** 1

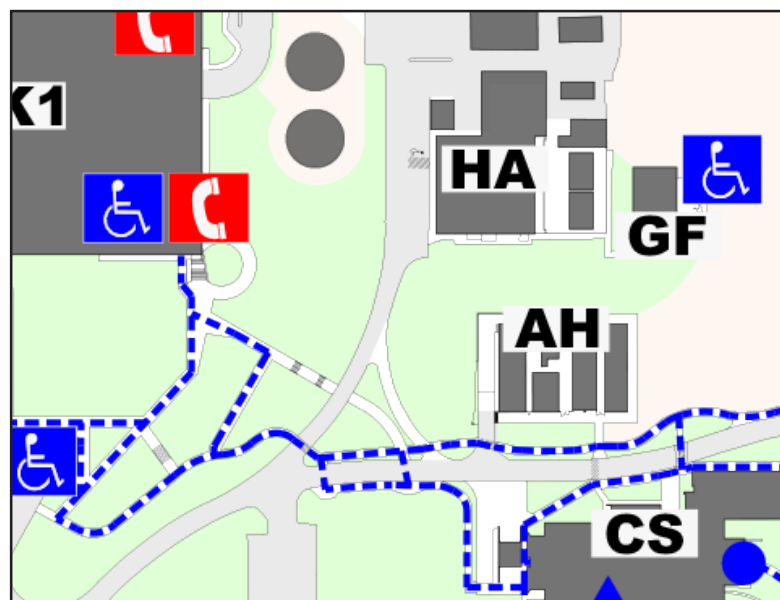
**Map Abbreviation:** AH

**Located in this Building:**

Animal Rooms, Greenhouses, Research Rooms



Feature	Basement	1st Floor	2nd Floor	3rd Floor	4th Floor	5th Floor	Notes
Accessible Restrooms	--	Yes	--	--	--	--	All restrooms in this building are accessible
Accessible Drinking Fountains	--	No	--	--	--	--	No drinking fountains in this building
Accessible Entrance(s)	--	Yes	--	--	--	--	All entrances for this building are accessible
Area of Refuge	--	N/A	--	--	--	--	Not required
Elevators	--	N/A	--	--	--	--	
Chair Lift	--	No	--	--	--	--	
Evacuation Chair(s)	--	No	--	--	--	--	
Nearest Accessible Parking	West Parking Structure, Bio Lot						
Misc.							



### Legend

- Accessible Path of Travel
- ▲ Accessible Entrance
- Automatic Accessible Entrance
- ♿ Accessible Parking
- ☎ Emergency Phone
- P Parking Dispenser

## Biological Sciences

**Year Built:** 1968 (major renovation in 2008)

**Number of Floors:** 3, plus basement

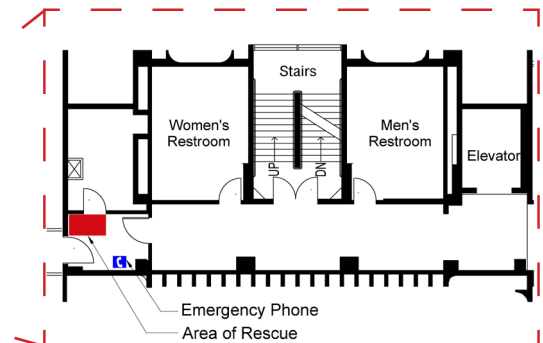
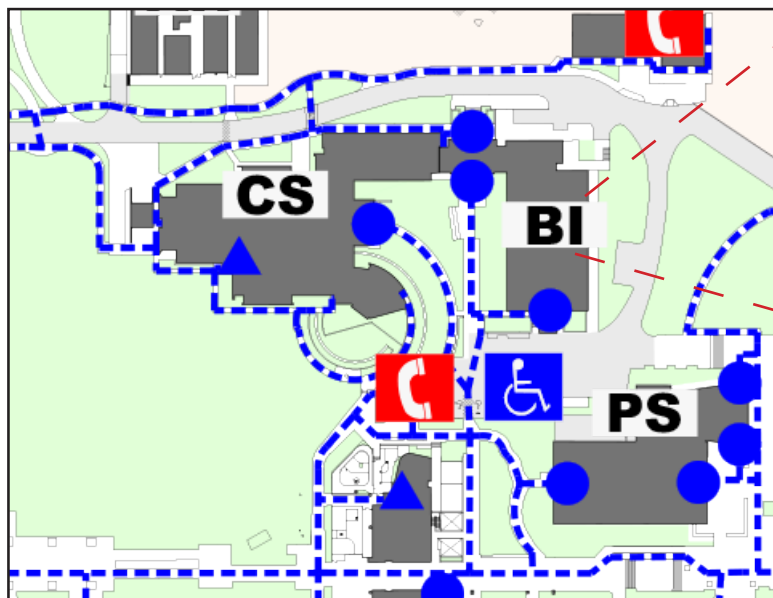
**Map Abbreviation:** BI

**Located in this Building:**

College of Natural Sciences Admin. Offices, Biology, Physics, Geology, and Natural Science Classes, Labs, Faculty Offices



Feature	Basement	1st Floor	2nd Floor	3rd Floor	4th Floor	5th Floor	Notes
Accessible Restrooms	Yes	Yes	Yes	Yes	--	--	All restrooms in this building are accessible
Accessible Drinking Fountains	Yes	Yes	Yes	Yes	--	--	All drinking fountains in this building are accessible
Accessible Entrance(s)	No	Yes	N/A	N/A	--	--	2 accessible entrances on west side of building
Area of Refuge	Yes	Yes	Yes	Yes	--	--	
Elevators	1	1	1	1	--	--	Single elevator services all floors
Chair Lift	No	No	No	No	--	--	
Evacuation Chair(s)	No	No	2	No	--	--	South stairwell; stairwell No.1
Nearest Accessible Parking	Parking Lot M, the west Parking Structure, Bio Lot						
Misc.							



**Legend**

- - - Accessible Path of Travel
- ▲ Accessible Entrance
- Automatic Accessible Entrance
- ♿ Accessible Parking
- Emergency Area of Refuge
- ☎ Emergency Phone

# Chaparral Hall

**Year Built:** 1964

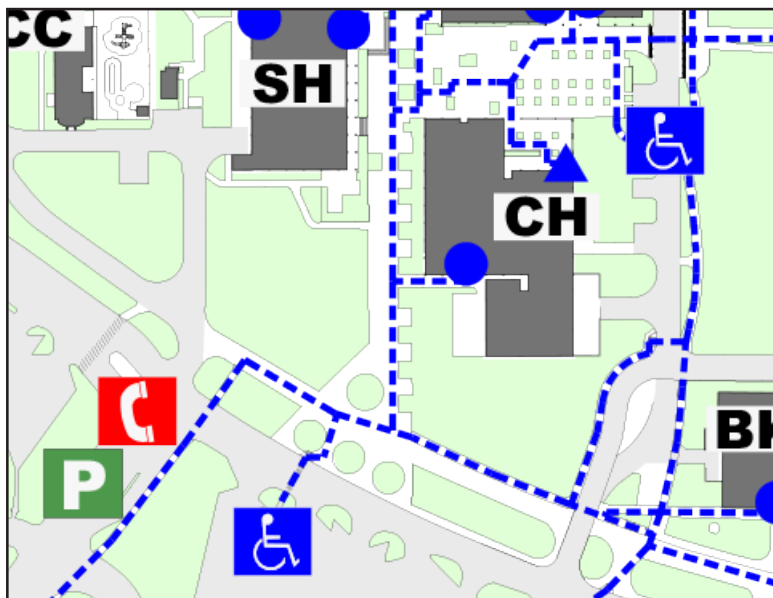
**Number of Floors:** 1

**Map Abbreviation:** CH

**Located in this Building:**  
Classrooms



Feature	Basement	1st Floor	2nd Floor	3rd Floor	4th Floor	5th Floor	Notes
Accessible Restrooms	--	Yes	--	--	--	--	All restrooms in this building are accessible
Accessible Drinking Fountains	--	Yes	--	--	--	--	All drinking fountains in this building are accessible
Accessible Entrance(s)	--	Yes	--	--	--	--	Accessible entrance located on the south side of building (detail below)
Area of Refuge	--	N/A	--	--	--	--	Not required
Elevators	--	N/A	--	--	--	--	
Chair Lift	--	No	--	--	--	--	
Evacuation Chair(s)	--	No	--	--	--	--	
Nearest Accessible Parking	Lot C, east of Chaparral Hall						
Misc.							



**Legend**

- Accessible Path of Travel
- ▲ Accessible Entrance
- Automatic Accessible Entrance
- ♿ Accessible Parking
- ☎ Emergency Phone
- P Parking Dispenser

## Chemical Sciences Building

**Year Built:** 2006

**Number of Floors:** 3, plus basement

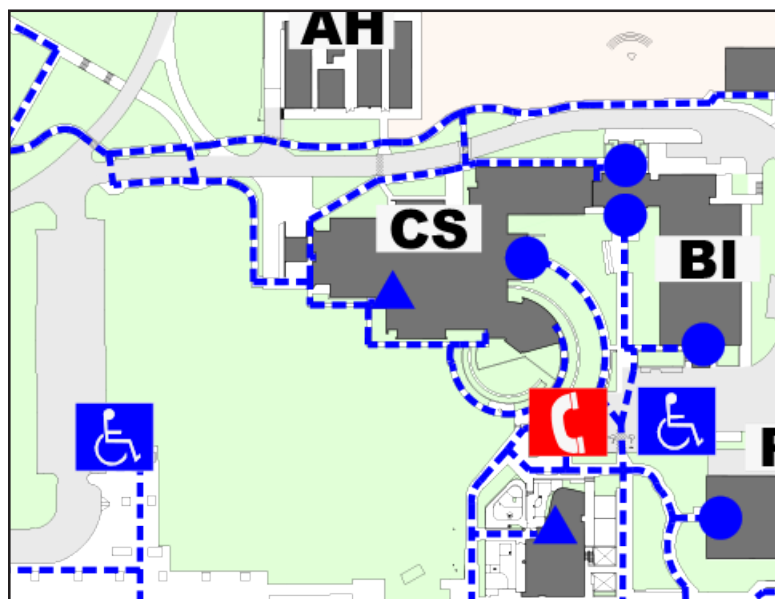
**Map Abbreviation:** CS

**Located in this Building:**

Chemistry, Biology, Geology, and Natural Science Classes, Laboratories and Faculty Offices



Feature	Basement	1st Floor	2nd Floor	3rd Floor	4th Floor	5th Floor	Notes
Accessible Restrooms	Yes	Yes	Yes	Yes	--	--	All restrooms in this building are accessible
Accessible Drinking Fountains	Yes	Yes	Yes	Yes	--	--	All drinking fountains have been made accessible in this building
Accessible Entrance(s)	N/A	Yes	N/A	N/A	--	--	Accessible entrance located on east & west sides of building (detail below)
Area of Refuge	N/A	N/A	N/A	N/A	--	--	Not required
Elevators	No	2	2	2	--	--	2 elevators servicing 1st-3rd floors; no classes in basement
Chair Lift	No	Yes	No	No	--	--	SSD and EHS are conducting an inventory of Evac Chairs and Lifts as chairs and lifts have been moved.
Evacuation Chair(s)	No	No	No	3	--	--	Stairwells Nos. 1, 2 and 7
Nearest Accessible Parking	Parking Lot M, parking Lot L, the West Parking Structure						
Misc.							



**Legend**

- Accessible Path of Travel
- ▲ Accessible Entrance
- Automatic Accessible Entrance
- ♿ Accessible Parking
- ☎ Emergency Phone

## Children's Center

**Year Built:** 1980

**Number of Floors:** 1

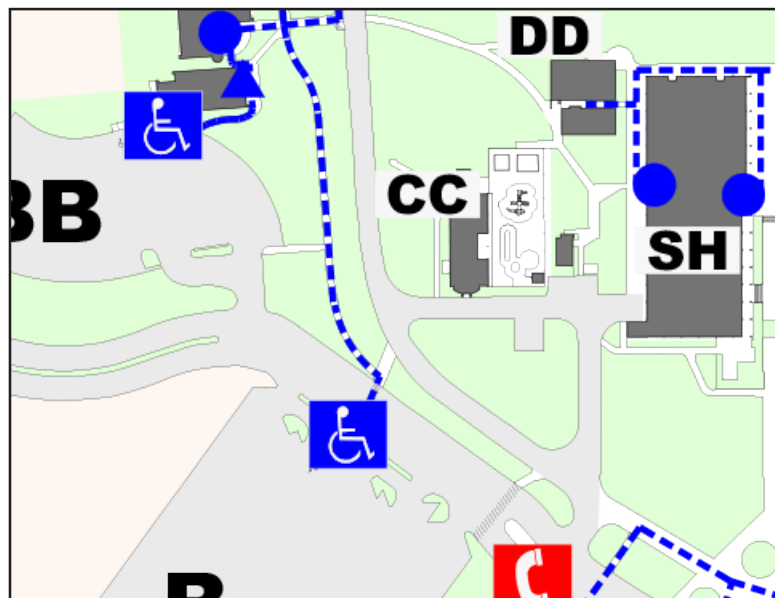
**Map Abbreviation:** CC

**Located in this Building:**

Children's Center



Feature	Basement	1st Floor	2nd Floor	3rd Floor	4th Floor	5th Floor	Notes
Accessible Restrooms	--	Yes	--	--	--	--	All restrooms in this building are accessible
Accessible Drinking Fountains	--	No	--	--	--	--	
Accessible Entrance(s)	--	Yes	--	--	--	--	
Area of Refuge	--	N/A	--	--	--	--	Not required
Elevators	--	N/A	--	--	--	--	
Chair Lift	--	No	--	--	--	--	
Evacuation Chair(s)	--	No	--	--	--	--	
Nearest Accessible Parking	Lot B, Lot BB						
Misc.							



### Legend

- - - Accessible Path of Travel
- ▲ Accessible Entrance
- Automatic Accessible Entrance
- ♿ Accessible Parking
- ☎ Emergency Phone

## College of Education Building

**Year Built:** 2008

**Number of Floors:** 3

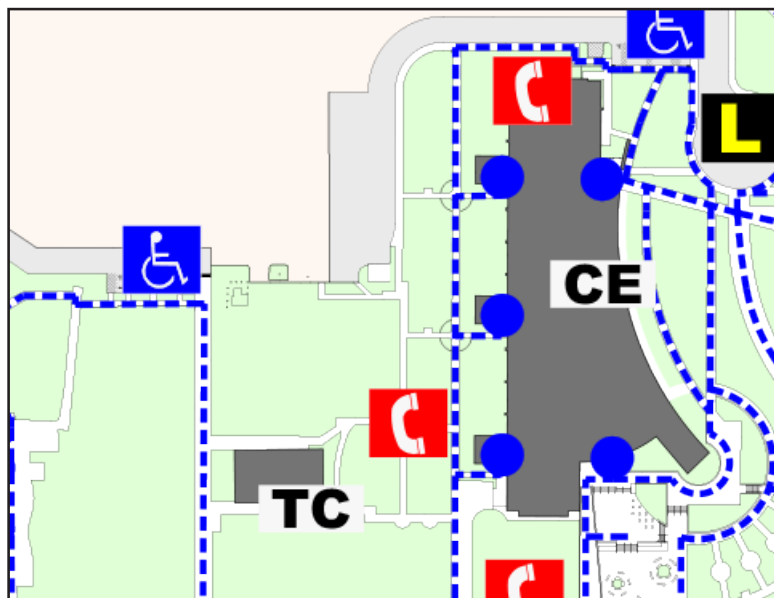
**Map Abbreviation:** CE

**Located in this Building:**

College of Education Administration Offices, Education Classes, Labs, Computer Labs, and Literacy Center



Feature	Basement	1st Floor	2nd Floor	3rd Floor	4th Floor	5th Floor	Notes
Accessible Restrooms	--	Yes	Yes	Yes	--	--	All restrooms in this building are accessible
Accessible Drinking Fountains	--	Yes	Yes	Yes	--	--	All drinking fountains in this building are accessible
Accessible Entrance(s)	--	Yes	N/A	N/A	--	--	3 accessible entrances located on west side of building; 1 each on south and northeast sides (detail below)
Area of Refuge	--	N/A	N/A	N/A	--	--	Not required
Elevators	--	3	3	3	--	--	Servicing all floors
Chair Lift	--	No	No	No	--	--	
Evacuation Chair(s)	--	No	No	3	--	--	West Stairwells Nos. 1, 2, and 3
Nearest Accessible Parking	Parking Lot M, parking Lot L, the West Parking Structure						
Misc.							



**Legend**

- Accessible Path of Travel
- ▲ Accessible Entrance
- Automatic Accessible Entrance
- ♿ Accessible Parking
- ☎ Emergency Phone
- L Passenger Loading Zone



## Commons Building

**Year Built:** 1972

**Number of Floors:** 2

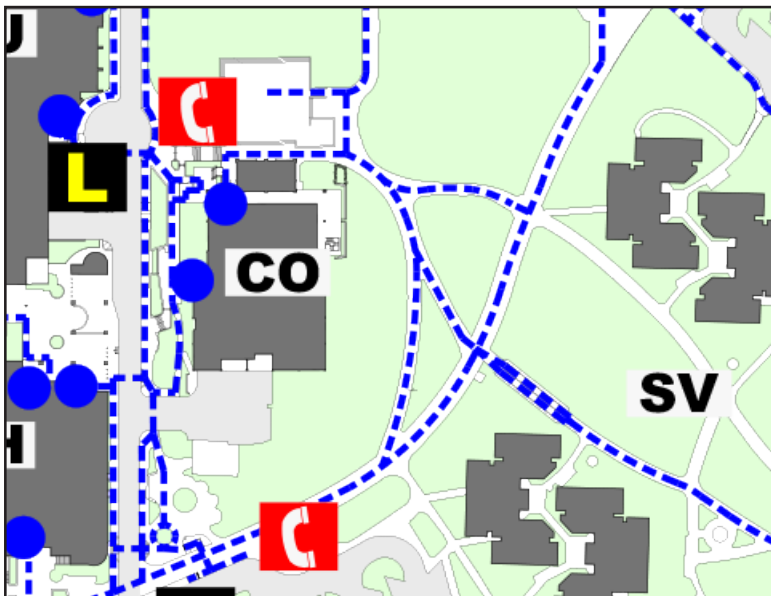
**Map Abbreviation:** CO

**Located in this Building:**

Sodexo Food Services, Obershaw Dining Hall, Eucalyptus Room, Pine Room, Sycamore Room and Events Scheduling



Feature	Basement	1st Floor	2nd Floor	3rd Floor	4th Floor	5th Floor	Notes
Accessible Restrooms	--	Yes	Yes	--	--	--	All restrooms in this building are accessible
Accessible Drinking Fountains	--	Yes	Yes	--	--	--	All drinking fountains in this building are accessible
Accessible Entrance(s)	--	Yes	Yes	--	--	--	Accessible entrance to 1st floor on north side of building; accessible entrance to 2nd floor on west side
Area of Refuge	--	N/A	N/A	--	--	--	Not required
Elevators	--	1	1	--	--	--	
Chair Lift	--	No	No	--	--	--	
Evacuation Chair(s)	--	N/A	1	--	--	--	Patio
Nearest Accessible Parking	Lot D						
Misc.							



### Legend

- Accessible Path of Travel
- ▲ Accessible Entrance
- Automatic Accessible Entrance
- ♿ Accessible Parking
- ☎ Emergency Phone
- L Passenger Loading Zone

## Coyote Bookstore/Veteran's Success Center

**Year Built:** 1987

**Number of Floors:** 1 plus basement

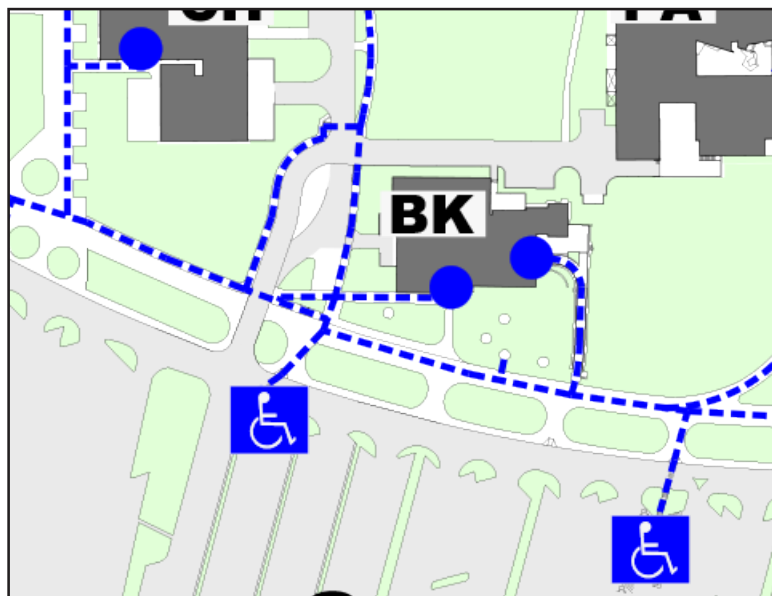
**Map Abbreviation:** BK

**Located in this Building:**

Coyote Bookstore and Veteran's Success Center (Basement)



Feature	Basement	1st Floor	2nd Floor	3rd Floor	4th Floor	5th Floor	Notes
Accessible Restrooms	Yes	Yes	--	--	--	--	All restrooms in this building are accessible
Accessible Drinking Fountains	Yes	Yes	--	--	--	--	All drinking fountains in this building are accessible
Accessible Entrance(s)	Yes	Yes	--	--	--	--	Accessible entrance located at south side of building (detail below)
Area of Refuge	N/A	N/A	--	--	--	--	
Elevators	1	1	--	--	--	--	Servicing all floors
Chair Lift	No	No	--	--	--	--	
Evacuation Chair(s)	No	No	--	--	--	--	
Nearest Accessible Parking	Parking Lot C, in front of Chaparral Hall						
Misc.							



### Legend

- Accessible Path of Travel
- ▲ Accessible Entrance
- Automatic Accessible Entrance
- ♿ Accessible Parking
- ☎ Emergency Phone

## Environmental Health and Safety

**Year Built:** 2000

**Number of Floors:** 1

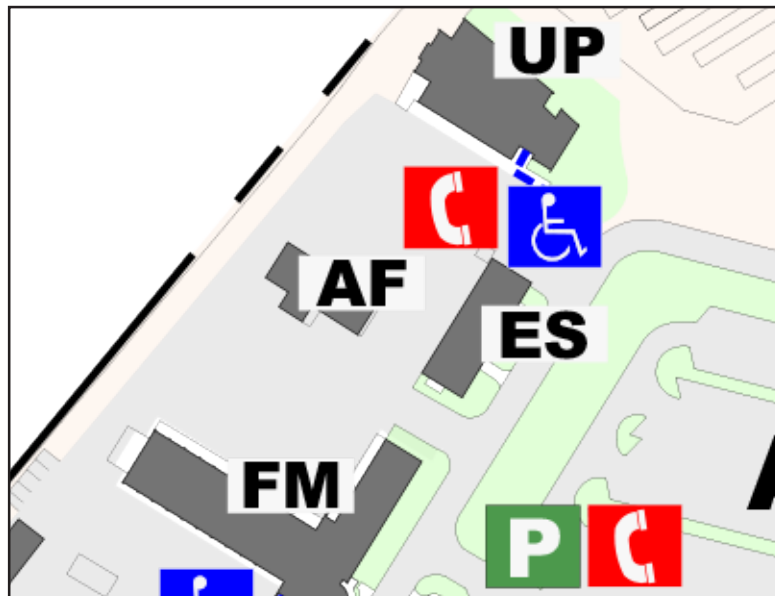
**Map Abbreviation:** ES

**Located in this Building:**

Environmental Health and Safety



Feature	Basement	1st Floor	2nd Floor	3rd Floor	4th Floor	5th Floor	Notes
Accessible Restrooms	--	Yes	--	--	--	--	All restrooms in this building are accessible
Accessible Drinking Fountains	--	Yes	--	--	--	--	All drinking fountains in this building are accessible
Accessible Entrance(s)	--	Yes	--	--	--	--	Clearances are not met on either door to this building
Area of Refuge	--	N/A	--	--	--	--	Not required
Elevators	--	N/A	--	--	--	--	
Chair Lift	--	No	--	--	--	--	
Evacuation Chair(s)	--	No	--	--	--	--	
Nearest Accessible Parking	Lot A, behind ES Offices						
Misc.							



### Legend

- Accessible Path of Travel
- ▲ Accessible Entrance
- Automatic Accessible Entrance
- ♿ Accessible Parking
- ☎ Emergency Phone
- P Parking Dispenser

## Facilities Planning and Management

**Year Built:** 1969; major renovations in 2000

**Number of Floors:** 1

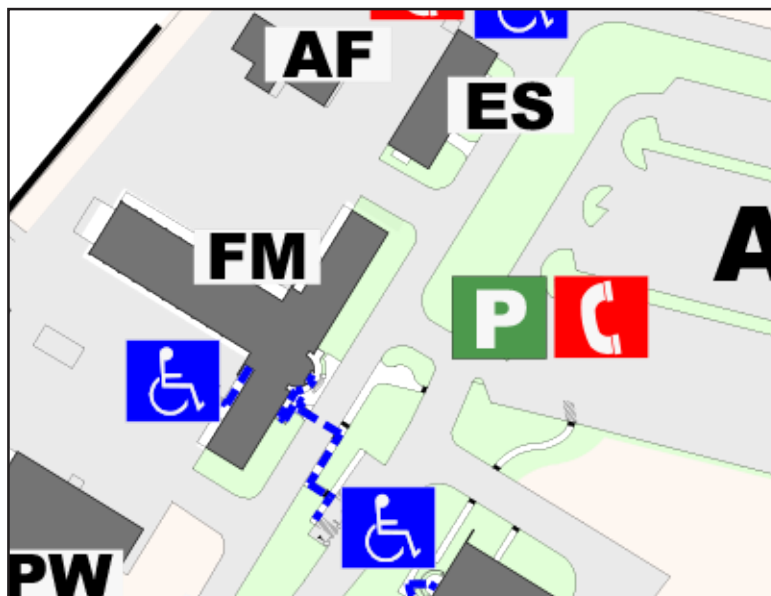
**Map Abbreviation:** FM

**Located in this Building:**

Facilities Planning, Design & Construction (FPDC);  
Facilities Management



Feature	Basement	1st Floor	2nd Floor	3rd Floor	4th Floor	5th Floor	Notes
Accessible Restrooms	--	Yes	--	--	--	--	All restrooms in this building are accessible
Accessible Drinking Fountains	--	Yes	--	--	--	--	All drinking fountains in this building are accessible
Accessible Entrance(s)	--	No	--	--	--	--	
Area of Refuge	--	N/A	--	--	--	--	
Elevators	--	N/A	--	--	--	--	
Chair Lift	--	No	--	--	--	--	
Evacuation Chair(s)	--	No	--	--	--	--	
Nearest Accessible Parking	Parking lot across from Administrative Services, behind Facilities Planning and Management Offices						
Misc.							



Legend	
---	Accessible Path of Travel
▲	Accessible Entrance
●	Automatic Accessible Entrance
♿	Accessible Parking
☎	Emergency Phone
P	Parking Dispenser

## Faculty Offices Building

**Year Built:** 1988

**Number of Floors:** 2

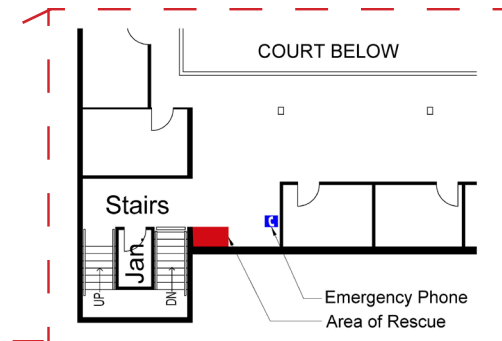
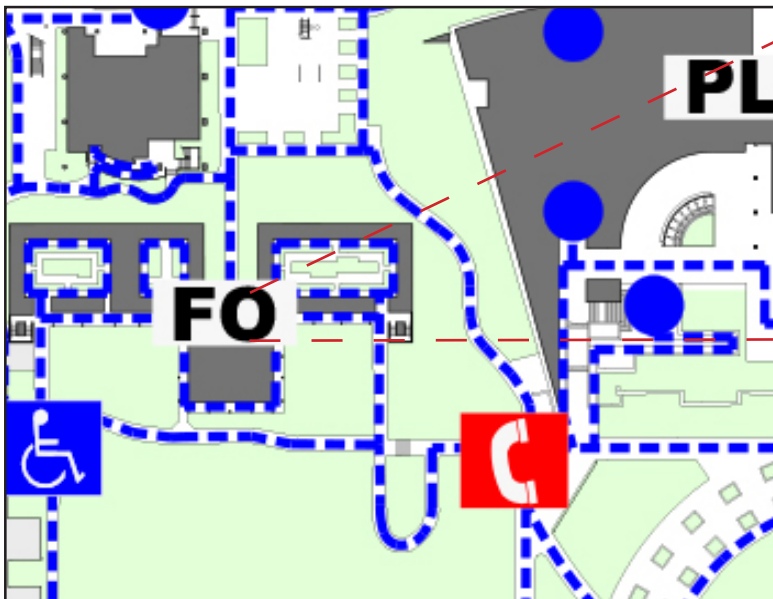
**Map Abbreviation:** FO

**Located in this Building:**

Army ROTC, Airforce ROTC, RIMI



Feature	Basement	1st Floor	2nd Floor	3rd Floor	4th Floor	5th Floor	Notes
Accessible Restrooms	--	Yes	Yes	--	--	--	All restrooms in this building are accessible
Accessible Drinking Fountains	--	Yes	Yes	--	--	--	All drinking fountains in this building are accessible
Accessible Entrance(s)	--	Yes	Yes	--	--	--	All offices open into a quad area, all entrances are accessible
Area of Refuge	--	N/A	Yes	--	--	--	
Elevators	--	1	1	--	--	--	
Chair Lift	--	No	No	--	--	--	
Evacuation Chair(s)	--	1	No	--	--	--	Stairwell No. 2
Nearest Accessible Parking	Parking Lot C, next to Administration Building						
Misc.							



### Legend

- Accessible Path of Travel
- ▲ Accessible Entrance
- Automatic Accessible Entrance
- ♿ Accessible Parking
- Emergency Area of Refuge
- Ⓜ Emergency Phone

## Health and Physical Education Building

**Year Built:** 1995

**Number of Floors:** 2, plus basement

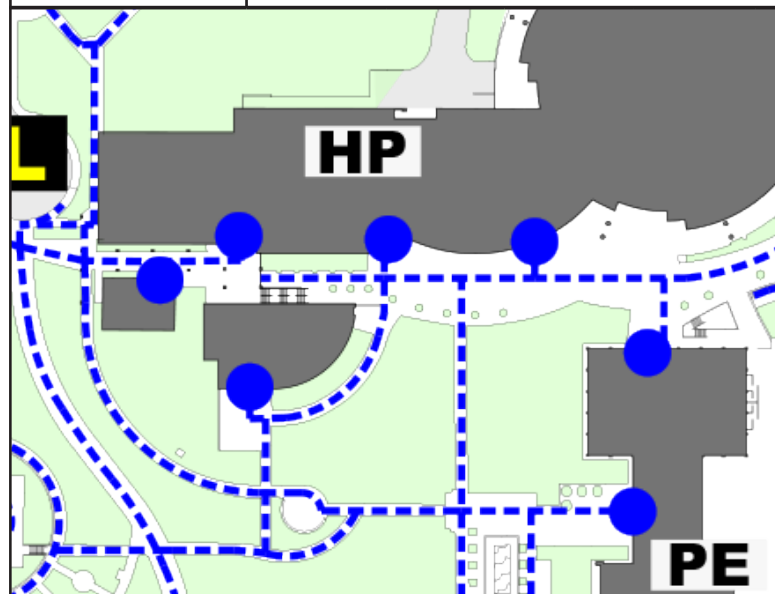
**Map Abbreviation:** HP

**Located in this Building:**

Coussoulis Arena and Kinesiology, Nursing, Nutrition and Health Science Labs, Classrooms and Faculty Offices



Feature	Basement	1st Floor	2nd Floor	3rd Floor	4th Floor	5th Floor	Notes
Accessible Restrooms	Yes	Yes	Yes	--	--	--	All restrooms in this building are accessible
Accessible Drinking Fountains	Yes	Yes	Yes	--	--	--	All drinking fountains in this building are accessible
Accessible Entrance(s)	Yes	Yes	Yes	--	--	--	Accessible entrances to each floor are located on the south side of the building
Area of Refuge	N/A	N/A	N/A	--	--	--	
Elevators	2	2	2	--	--	--	
Chair Lift	No	No	No	--	--	--	SSD and EHS are conducting an inventory of Evac Chairs and Lifts as chairs and lifts have been moved.
Evacuation Chair(s)	1	1	No	--	--	--	Stairwells Nos. 1 and 2
Nearest Accessible Parking	East Parking Structure, north of College of Education Building						
Misc.							



**Legend**

- Accessible Path of Travel
- ▲ Accessible Entrance
- Automatic Accessible Entrance
- ♿ Accessible Parking
- ☎ Emergency Phone
- L Passenger Loading Zone

## Student Health Center

**Year Built:** 1979

**Number of Floors:** 1

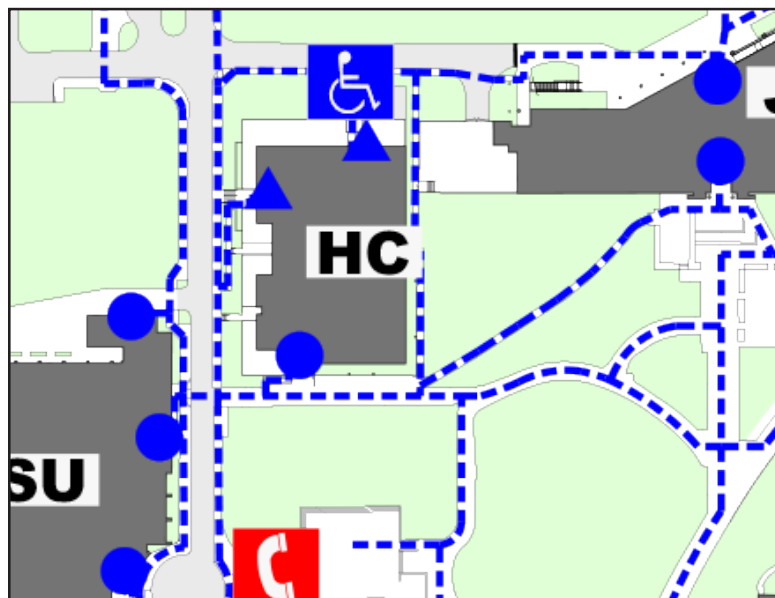
**Map Abbreviation:** HC

**Located in this Building:**

Student Health Records, Counseling and Nursing



Feature	Basement	1st Floor	2nd Floor	3rd Floor	4th Floor	5th Floor	Notes
Accessible Restrooms	--	Yes	--	--	--	--	All restrooms in this building are accessible
Accessible Drinking Fountains	--	Yes	--	--	--	--	All drinking fountains in this building are accessible
Accessible Entrance(s)	--	Yes	--	--	--	--	Accessible entrances located on both the south and west sides of the building (detail below)
Area of Refuge	--	N/A	--	--	--	--	
Elevators	--	N/A	--	--	--	--	
Chair Lift	--	No	--	--	--	--	
Evacuation Chair(s)	--	No	--	--	--	--	
Nearest Accessible Parking	Parking Lot F						
Misc.							



### Legend

- Accessible Path of Travel
- Accessible Entrance
- Automatic Accessible Entrance
- Accessible Parking
- Emergency Phone

## Heating and Air Conditioning

**Year Built:** 1967

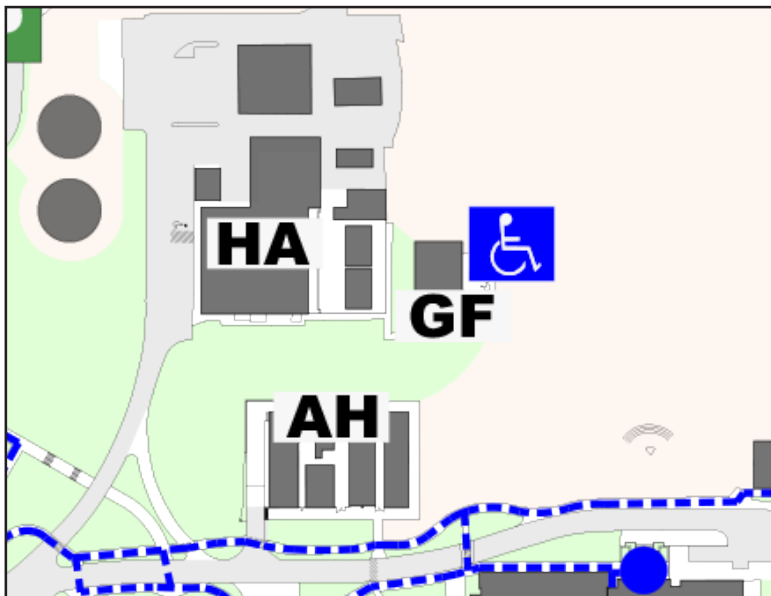
**Number of Floors:** 1

**Map Abbreviation:** HA

**Located in this Building:**  
Heating and Air Conditioning



Feature	Basement	1st Floor	2nd Floor	3rd Floor	4th Floor	5th Floor	Notes
Accessible Restrooms	--	Yes	--	--	--	--	All restrooms in this building are accessible
Accessible Drinking Fountains	--	Yes	--	--	--	--	All drinking fountains in this building are accessible
Accessible Entrance(s)	--	No	--	--	--	--	All entrances exceed allowable pulling force
Area of Refuge	--	N/A	--	--	--	--	
Elevators	--	N/A	--	--	--	--	
Chair Lift	--	No	--	--	--	--	
Evacuation Chair(s)	--	No	--	--	--	--	
Nearest Accessible Parking	West Parking Structure and Lot L (No accessible path of travel to building)						
Misc.							



**Legend**

- Accessible Path of Travel
- Accessible Entrance
- Automatic Accessible Entrance
- Accessible Parking
- Emergency Phone



# Jack Brown Hall College of Business and Public Administration

**Year Built:** 1993

**Number of Floors:** 5

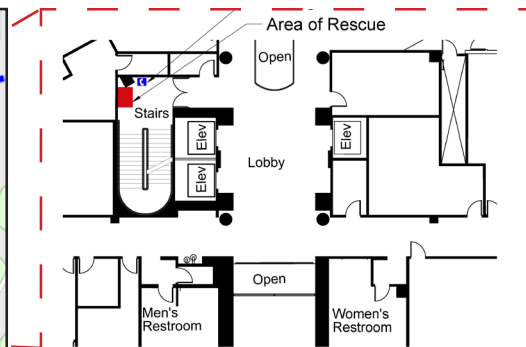
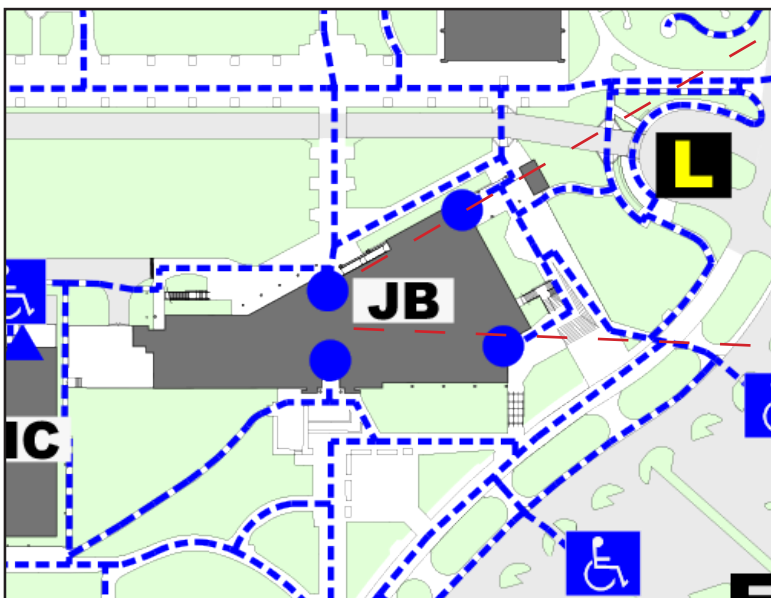
**Map Abbreviation:** JB

**Located in this Building:**

College of Business & Public Admin., MBA Program, Convenience Store, Inland Empire Center for Entrepreneurship (IECE), Business, Computer Science and Engineering, and Natural Sci. Classes, Labs, Faculty Offices



Feature	Basement	1st Floor	2nd Floor	3rd Floor	4th Floor	5th Floor	Notes
Accessible Restrooms	--	Yes	Yes	Yes	Yes	Yes	All restrooms in this building are accessible
Accessible Drinking Fountains	--	Yes	Yes	Yes	Yes	Yes	All drinking fountains in this building are accessible
Accessible Entrance(s)	--	Yes	N/A	N/A	N/A	N/A	Accessible entrances located on the north, south & east sides of building
Area of Refuge	--	N/A	Yes	Yes	Yes	Yes	Areas of refuge have been proposed at this location on all floors
Elevators	--	3	3	3	2	2	2 serve all floors; 1 only floors 1-3
Chair Lift	--	Yes	No	No	No	No	Services Room 102; max load: 500 lbs.
Evacuation Chair(s)	--	No	1	3	No	1	Stairwells Nos. 1, 2, 3, and 4
Nearest Accessible Parking	Parking Lot G						
Misc.	Power-assisted doors on 1st floor lecture hall						



**Legend**

- Accessible Path of Travel
- ▲ Accessible Entrance
- Automatic Accessible Entrance
- ♿ Accessible Parking
- ☎ Emergency Phone
- Ⓛ Passenger Loading Zone

## Murillo Family Observatory

**Year Built:** 2010

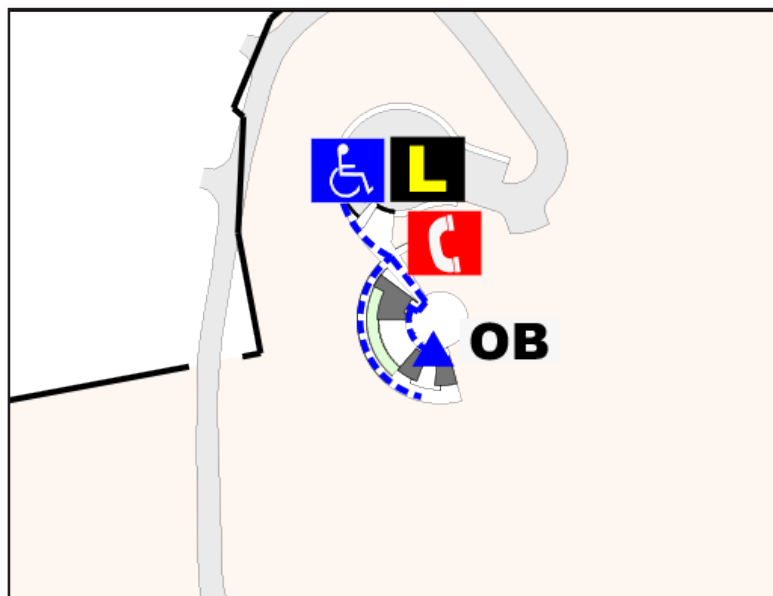
**Number of Floors:** 2

**Map Abbreviation:** OB

**Located in this Building:**  
Observatory



Feature	Basement	1st Floor	2nd Floor	3rd Floor	4th Floor	5th Floor	Notes
Accessible Restrooms	N/A	Yes	--	--	--	--	All restrooms in this building are accessible
Accessible Drinking Fountains	N/A	Yes	--	--	--	--	All drinking fountains in this building are accessible
Accessible Entrance(s)	N/A	Yes	--	--	--	--	Accessible entrances located on the north, south & east sides of building
Area of Refuge	No	--	--	--	--	--	
Elevators	N/A	--	--	--	--	--	
Chair Lift	N/A	--	--	--	--	--	
Evacuation Chair(s)	No	--	--	--	--	--	
Nearest Accessible Parking	At site and loading zone.						
Misc.							



### Legend

- Accessible Path of Travel
- ▲ Accessible Entrance
- Automatic Accessible Entrance
- ♿ Accessible Parking
- ☎ Emergency Phone
- Ⓛ Passenger Loading Zone

## Modular Classroom Complex

**Year Built:** N/A

**Number of Floors:** 1

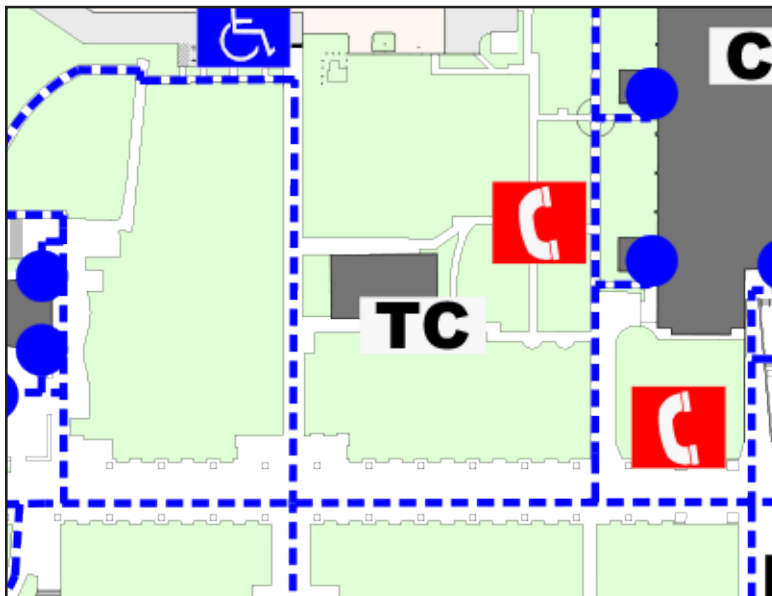
**Map Abbreviation:** TC

**Located in this Building:**

Classrooms



Feature	Basement	1st Floor	2nd Floor	3rd Floor	4th Floor	5th Floor	Notes
Accessible Restrooms	--	N/A	--	--	--	--	No restrooms in this complex; nearest accessible restrooms in Physical Science Building or Library
Accessible Drinking Fountains	--	N/A	--	--	--	--	No drinking fountains in this complex; nearest accessible drinking fountains in Physical Science Building
Accessible Entrance(s)	--	No	--	--	--	--	No accessible entrances*
Area of Refuge	--	N/A	--	--	--	--	
Elevators	--	N/A	--	--	--	--	
Chair Lift	--	No	--	--	--	--	
Evacuation Chair(s)	--	No	--	--	--	--	
Nearest Accessible Parking	East Parking Structure						
Misc.	*Classrooms can be reassigned for accessibility reasons. Contact SSD office for details.						



### Legend

- Accessible Path of Travel
- ▲ Accessible Entrance
- Automatic Accessible Entrance
- ♿ Accessible Parking
- ☎ Emergency Phone

## Performing Arts Building

**Year Built:** 1977

**Number of Floors:** 2, plus basement

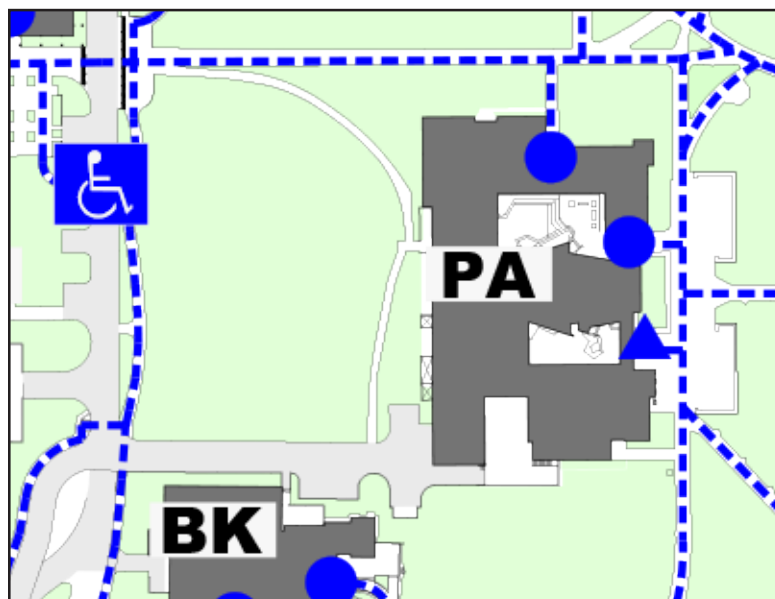
**Map Abbreviation:** PA

**Located in this Building:**

Music, Theatre Arts Dept., Ronald E. Barnes Theatre, Recital Hall, Dance, Costume Shop, Classrooms and Faculty Offices



Feature	Basement	1st Floor	2nd Floor	3rd Floor	4th Floor	5th Floor	Notes
Accessible Restrooms	N/A	Yes	Yes	--	--	--	All restrooms in this building are accessible; no restrooms in basement
Accessible Drinking Fountains	N/A	Yes	Yes	--	--	--	All drinking fountains in this building are accessible
Accessible Entrance(s)	N/A	Yes	N/A	--	--	--	
Area of Refuge	N/A	N/A	N/A	--	--	--	
Elevators	1	1	1	--	--	--	Serves all floors
Chair Lift	No	Yes	No	--	--	--	Serves Barnes Theatre; Max load: 500 lbs.
Evacuation Chair(s)	No	No	1	--	--	--	Elevator
Nearest Accessible Parking	Parking Lot C, parking Lot D						
Misc.							



**Legend**

- Accessible Path of Travel
- ▲ Accessible Entrance
- Automatic Accessible Entrance
- ♿ Accessible Parking
- ☎ Emergency Phone

## Pfau Library

**Year Built:** 1971; major addition in 1994

**Number of Floors:** 5, plus basement

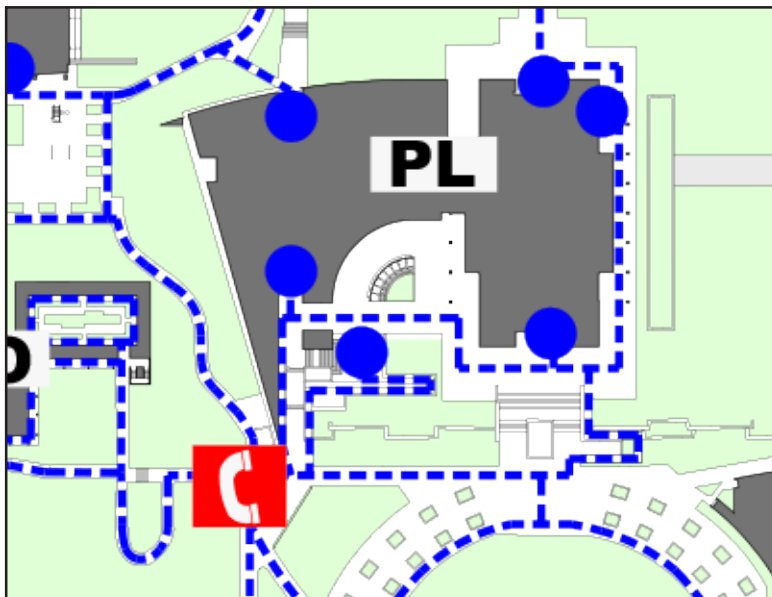
**Map Abbreviation:** PL

**Located in this Building:**

Pfau Library, Computer Labs, Instructional Classes, Ombuds Services, Assistive Learning



Feature	Basement	1st Floor	2nd Floor	3rd Floor	4th Floor	5th Floor	Notes
Accessible Restrooms	Yes	Yes	Yes	Yes	Yes	Yes	All restrooms in this building are accessible
Accessible Drinking Fountains	Yes	Yes	Yes	Yes	Yes	Yes	All drinking fountains in this building are accessible
Accessible Entrance(s)	Yes	Yes	N/A	N/A	N/A	N/A	Accessible entrance to basement on south side; 2 accessible entrances to the 1st floor on north and south sides
Area of Refuge	N/A	N/A	N/A	N/A	N/A	N/A	Not required
Elevators	6	6	6	5	5	5	5 elevators serve all floors; 1 in the wedge only serves floors 1 and 2
Chair Lift	No	No	No	No	No	No	
Evacuation Chair(s)	No	No	2	No	No	1	East stairwell; stairwells Nos. #5 and 9
Nearest Accessible Parking	Parking Lot C, parking Lot D, Parking Lot N						
Misc.	A TDD (Telecommunications Device for the Deaf) phone is located outside of PL-200						



### Legend

- - - Accessible Path of Travel
- ▲ Accessible Entrance
- Automatic Accessible Entrance
- ♿ Accessible Parking
- ☎ Emergency Phone

## Physical Education Building

**Year Built:** 1968

**Number of Floors:** 1

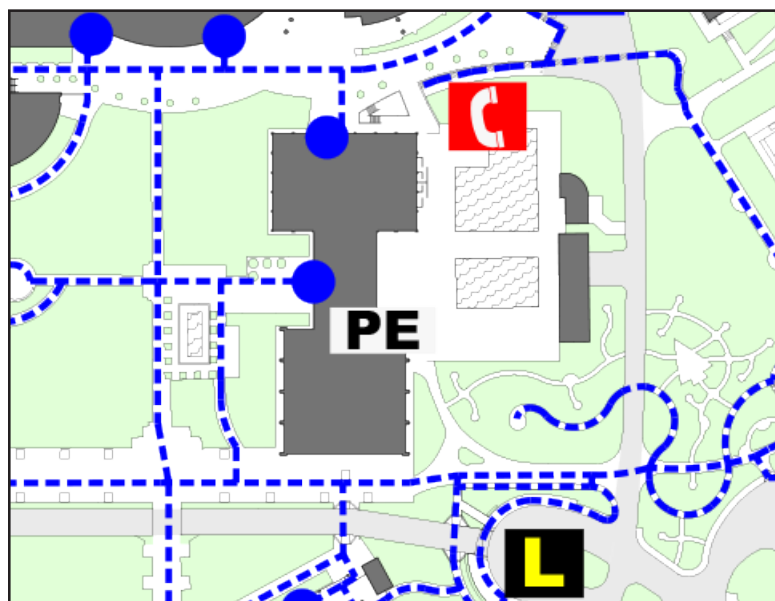
**Map Abbreviation:** PE

**Located in this Building:**

Physical Education & Dance Classes, Faculty Offices, Locker Rooms, Two Small Gyms; Access to Outdoor Pools



Feature	Basement	1st Floor	2nd Floor	3rd Floor	4th Floor	5th Floor	Notes
Accessible Restrooms	--	Yes*	--	--	--	--	All restrooms for this building are accessible
Accessible Drinking Fountains	--	Yes	--	--	--	--	All drinking fountains in this building are accessible
Accessible Entrance(s)	--	Yes	--	--	--	--	Accessible entrances located on the north and west sides of the building
Area of Refuge	--	N/A	--	--	--	--	
Elevators	--	N/A	--	--	--	--	
Chair Lift	--	No	--	--	--	--	
Evacuation Chair(s)	--	No	--	--	--	--	
Nearest Accessible Parking	Parking Lot G						
Misc.							



**Legend**

- Accessible Path of Travel
- ▲ Accessible Entrance
- Automatic Accessible Entrance
- ♿ Accessible Parking
- ☎ Emergency Phone
- L Passenger Loading Zone

## Physical Sciences Building

**Year Built:** 1967; major renovation in 2008

**Number of Floors:** 3, plus basement

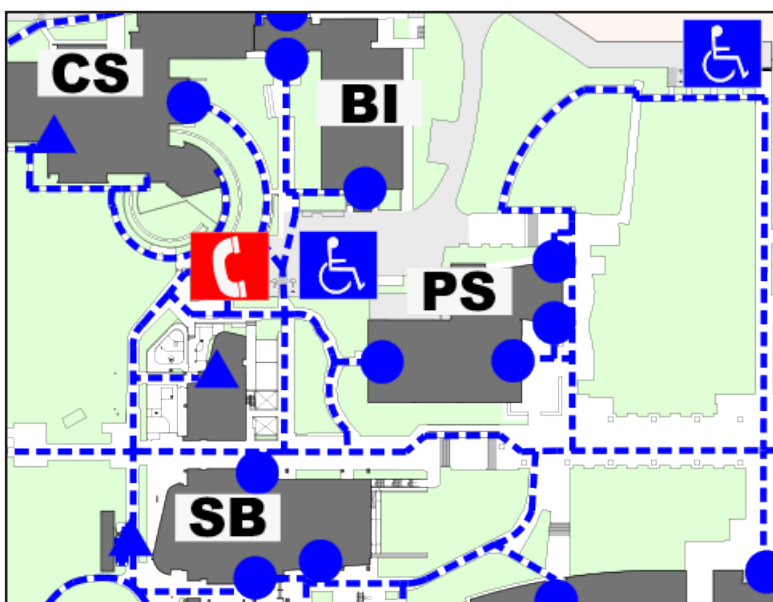
**Map Abbreviation:** PS

**Located in this Building:**

Physics and Health Science Classes, Labs, Administrative Offices and Faculty Offices.



Feature	Basement	1st Floor	2nd Floor	3rd Floor	4th Floor	5th Floor	Notes
Accessible Restrooms	Yes	Yes	Yes	Yes	--	--	All restrooms in this building are accessible
Accessible Drinking Fountains	Yes	Yes	Yes	Yes	--	--	All drinking fountains in this building are accessible
Accessible Entrance(s)	Yes	Yes	N/A	N/A	--	--	Accessible entrance to basement on east side; 2 accessible entrances to PS-10 on north and south sides; another entrance to first floor on west side
Area of Refuge	N/A	N/A	N/A	N/A	--	--	Not required
Elevators	1	1	1	1	--	--	Serves all floors
Chair Lift	No	Yes	No	No	--	--	Serves PS-10; Max load: 750 lbs.
Evacuation Chair(s)	No	1	2	No	--	--	Stairwells Nos. 2, 3, and 4
Nearest Accessible Parking	Parking Lot M						
Misc.							



### Legend

- Accessible Path of Travel
- ▲ Accessible Entrance
- Automatic Accessible Entrance
- ♿ Accessible Parking
- ☎ Emergency Phone

## Santos Manuel Student Union

**Year Built:** Major renovation in 2006

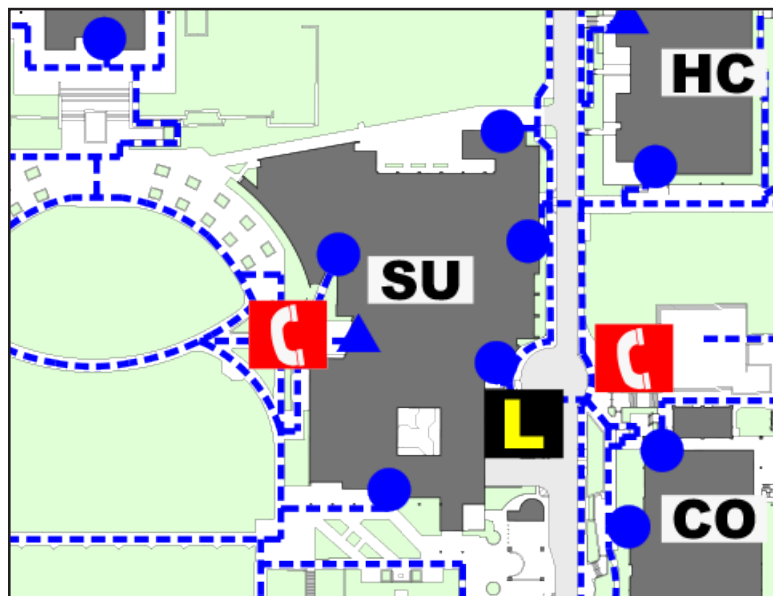
**Number of Floors:** 2

**Map Abbreviation:** SU

**Located in this Building:** Adult Re-Entry, ASI, Coyote Express, Cross Cultural Center, Events Center, Food Court, Game Room, Pride Center, Program Board, Starbucks, Women's Resource Center, Meeting Rooms



Feature	Basement	1st Floor	2nd Floor	3rd Floor	4th Floor	5th Floor	Notes
Accessible Restrooms	--	Yes	Yes	--	--	--	All restrooms in this building are accessible
Accessible Drinking Fountains	--	Yes	Yes	--	--	--	Drinking fountains by main auditorium and by Room 219 are accessible
Accessible Entrance(s)	--	Yes	N/A	--	--	--	Accessible entrances located on the south and west sides of the building
Area of Refuge	--	N/A	N/A	--	--	--	Not required
Elevators	--	3	3	--	--	--	
Chair Lift	--	No	No	--	--	--	
Evacuation Chair(s)	--	No	2	--	--	--	Elevators Nos. 1 and 3
Nearest Accessible Parking	Parking Lot D						
Misc.							



### Legend

- Accessible Path of Travel
- ▲ Accessible Entrance
- Automatic Accessible Entrance
- ♿ Accessible Parking
- ☎ Emergency Phone
- L Passenger Loading Zone



# Sierra Hall

**Year Built:** 1965

**Number of Floors:** 1

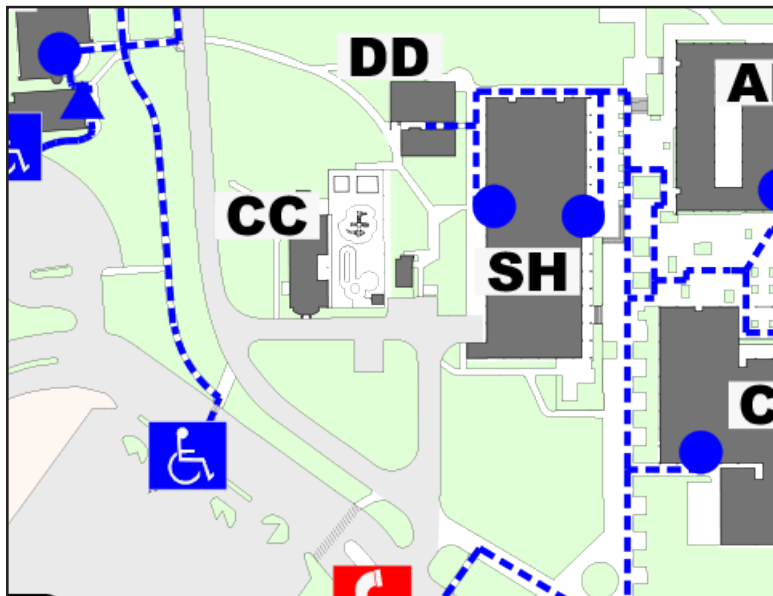
**Map Abbreviation:** SH

**Located in this Building:**

Human Resources, Purchasing, Administration and Finance Offices, College of Extended Learning, Accounts Payable, Budget, Payroll



Feature	Basement	1st Floor	2nd Floor	3rd Floor	4th Floor	5th Floor	Notes
Accessible Restrooms	--	Yes	--	--	--	--	All restrooms in this building are accessible
Accessible Drinking Fountains	--	Yes	--	--	--	--	All drinking fountains in this building are accessible
Accessible Entrance(s)	--	Yes	--	--	--	--	2 accessible entrances located on the east side; 1 located on the west side
Area of Refuge	--	N/A	--	--	--	--	
Elevators	--	N/A	--	--	--	--	
Chair Lift	--	No	--	--	--	--	
Evacuation Chair(s)	--	No	--	--	--	--	
Nearest Accessible Parking	Parking Lot B, parking Lot C						
Misc.							



**Legend**

- Accessible Path of Travel
- ▲ Accessible Entrance
- Automatic Accessible Entrance
- ♿ Accessible Parking
- ☎ Emergency Phone

## Social and Behavioral Sciences

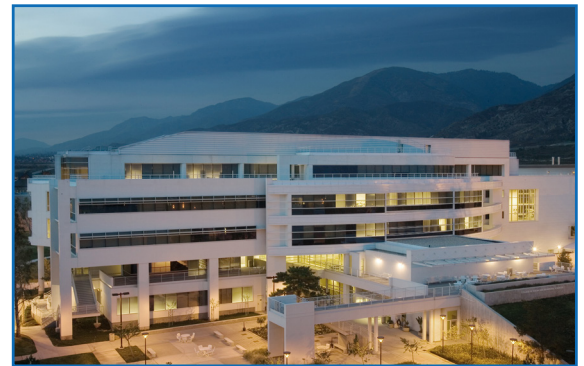
**Year Built:** 2002

**Number of Floors:** 5, plus basement

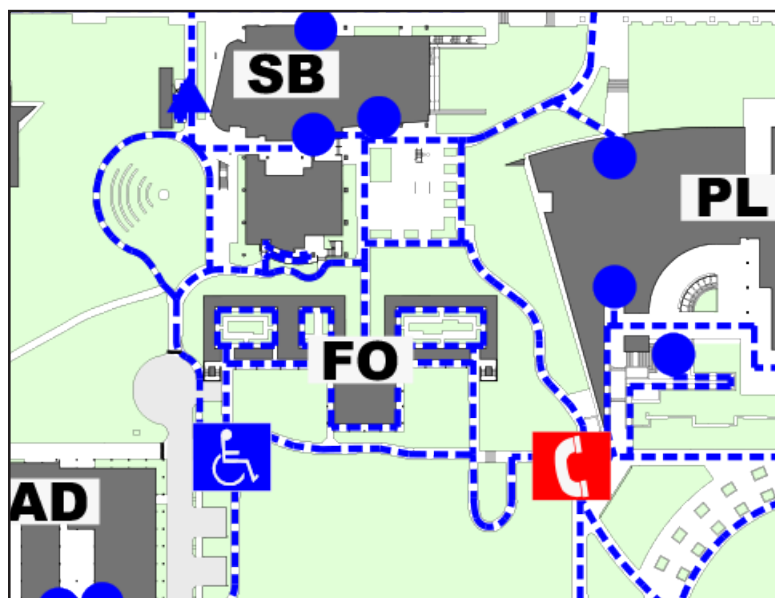
**Map Abbreviation:** SB

**Located in this Building:**

College of Social and Behavioral Sciences Classes, Labs,  
Administrative Offices, Faculty Offices, Infant/Toddler Center



Feature	Basement	1st Floor	2nd Floor	3rd Floor	4th Floor	5th Floor	Notes
Accessible Restrooms	Yes	Yes	Yes	Yes	Yes	Yes	All restrooms in this building are accessible
Accessible Drinking Fountains	Yes	Yes	Yes	Yes	Yes	Yes	All drinking fountains in this building are accessible
Accessible Entrance(s)	N/A	Yes	N/A	N/A	N/A	N/A	2 accessible entrances located in the center section of building; one facing south, the other facing north
Area of Refuge	N/A	N/A	N/A	N/A	N/A	N/A	
Elevators	3	3	3	2	2	2	2 elevators serve all floors; 3 serve basement through floor 2 only
Chair Lift	No	No	No	No	No	No	
Evacuation Chair(s)	1	1	1	1	1	1	Foyer, Women's Restrooms
Nearest Accessible Parking	Parking Lot AA, parking Lot M						
Misc.							



**Legend**

- - - Accessible Path of Travel
- ▲ Accessible Entrance
- Automatic Accessible Entrance
- ♿ Accessible Parking
- ☎ Emergency Phone

## Student Recreation and Wellness Center

**Year Built:** 2008

**Number of Floors:** 2

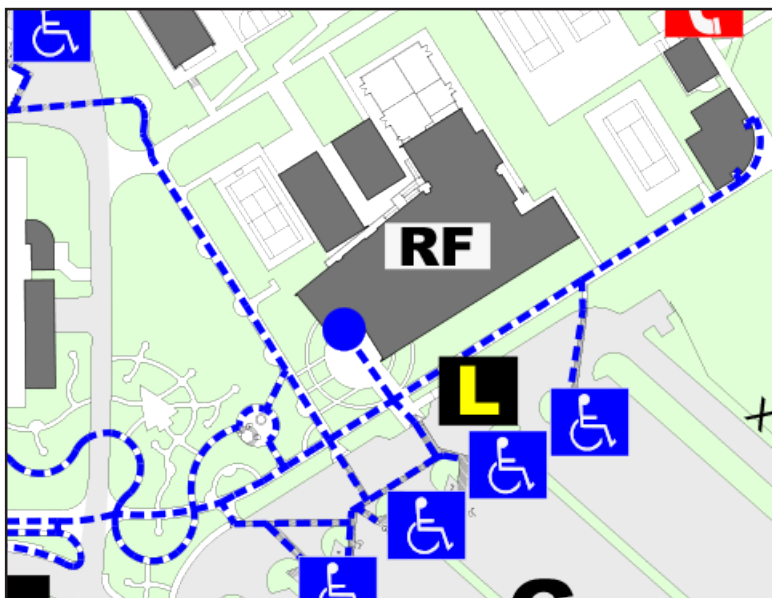
**Map Abbreviation:** RF

**Located in this Building:**

Student Fitness & Wellness Center: Circuit, Weights, Rock Wall, Basketball, Group Classes, Lockers, Accessible Sauna



Feature	Basement	1st Floor	2nd Floor	3rd Floor	4th Floor	5th Floor	Notes
Accessible Restrooms	--	Yes	Yes	--	--	--	All restrooms in this building are accessible
Accessible Drinking Fountains	--	Yes	Yes	--	--	--	All drinking fountains in this building are accessible
Accessible Entrance(s)	--	Yes	N/A	--	--	--	Accessible entrance located on the west side of building
Area of Refuge	--	N/A	N/A	--	--	--	
Elevators	--	1	1	--	--	--	
Chair Lift	--	No	No	--	--	--	
Evacuation Chair(s)	--	No	1	--	--	--	Stairwell No. 2
Nearest Accessible Parking	Parking Lot G, parking near Coussoulis Arena						
Misc.							



### Legend

- Accessible Path of Travel
- ▲ Accessible Entrance
- Automatic Accessible Entrance
- ♿ Accessible Parking
- ☎ Emergency Phone
- Ⓛ Passenger Loading Zone

## University Enterprises Corporation (UEC)

**Year Built:** 1991

**Number of Floors:** 1

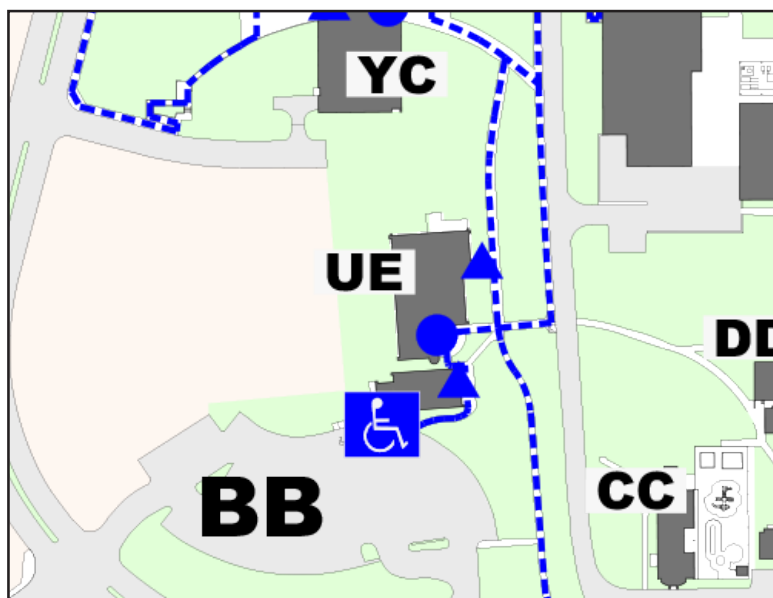
**Map Abbreviation:** UE

**Located in this Building:**

University Enterprises Corporation (UEC), Sponsored Programs, Academic Resources, Disaster Preparedness Office



Feature	Basement	1st Floor	2nd Floor	3rd Floor	4th Floor	5th Floor	Notes
Accessible Restrooms	--	Yes	--	--	--	--	All restrooms in this building are accessible
Accessible Drinking Fountains	--	Yes	--	--	--	--	All drinking fountains in this building are accessible
Accessible Entrance(s)	--	Yes	--	--	--	--	3 accessible entrances (one to OTTC) on east side of building
Area of Refuge	--	N/A	--	--	--	--	
Elevators	--	N/A	--	--	--	--	
Chair Lift	--	No	--	--	--	--	
Evacuation Chair(s)	--	No	--	--	--	--	
Nearest Accessible Parking	Parking Lot B, Lot BB						
Misc.							



**Legend**

- Accessible Path of Travel
- ▲ Accessible Entrance
- Automatic Accessible Entrance
- ♿ Accessible Parking
- ☎ Emergency Phone

## University Hall

**Year Built:** 1991

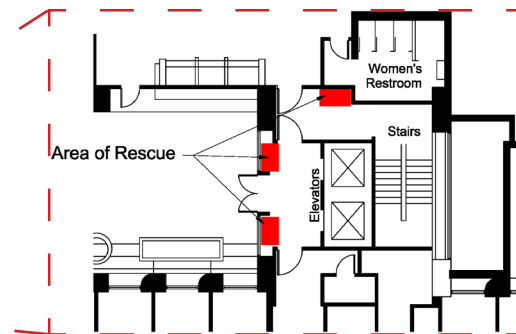
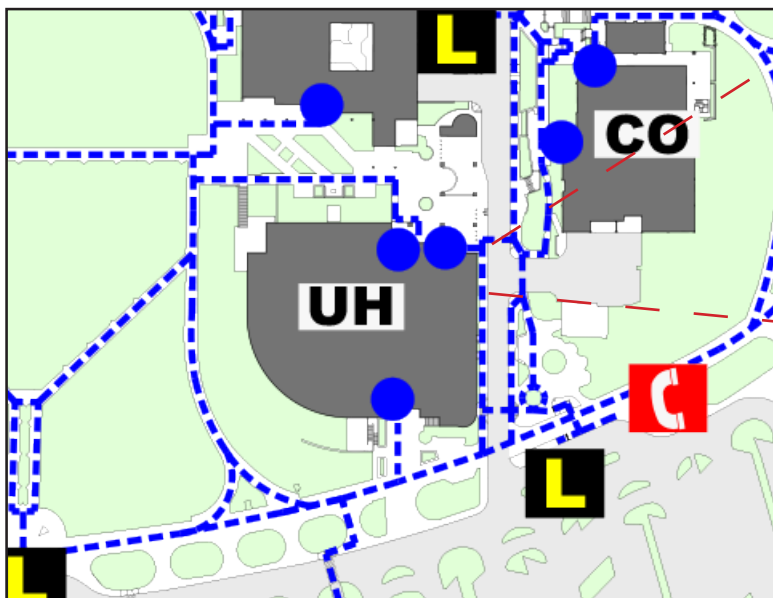
**Number of Floors:** 4, plus basement

**Map Abbreviation:** UH

**Located in this Building:** College of Arts and Letters Administration, Financial Aid, Records, SSD Office, Bursars, Admissions, Academic Support Programs Classrooms, Labs, Parking and Transportation Services



Feature	Basement	1st Floor	2nd Floor	3rd Floor	4th Floor	5th Floor	Notes
Accessible Restrooms	Yes	Yes	Yes	Yes	Yes	--	All restrooms in this building are accessible
Accessible Drinking Fountains	Yes	Yes	Yes	Yes	Yes	--	All drinking fountains in this building are accessible
Accessible Entrance(s)	N/A	Yes	N/A	N/A	N/A	--	2 accessible entrances located on the north side of building; one located on south side
Area of Refuge	Yes	N/A	Yes	Yes	Yes	--	
Elevators	2	2	2	2	2	--	Serving all floors
Chair Lift	No	Yes	No	No	No	--	Serves Room 106; Max load: 450 lbs.
Evacuation Chair(s)	No	N/A	1	3	1	--	Stairwells No. 2,3,4,5, and 6
Nearest Accessible Parking	Parking Lot D, parking Lot C						
Misc.	TDD phone located on 1st floor at SSD office ( UH-183) and in the lobby						



### Legend

- Accessible Path of Travel
- ▲ Accessible Entrance
- Automatic Accessible Entrance
- ♿ Accessible Parking
- ☎ Emergency Phone
- L Passenger Loading Zone

## University Police

**Year Built:** 2000

**Number of Floors:** 1

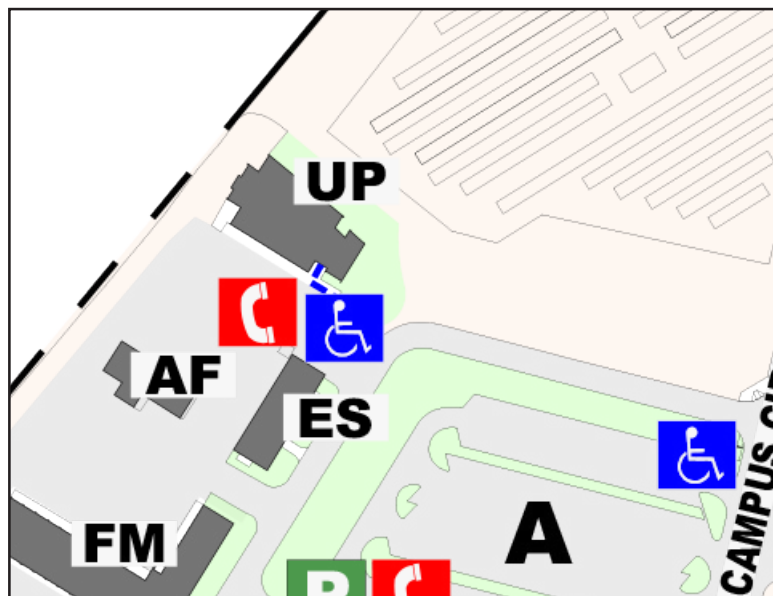
**Map Abbreviation:** UP

**Located in this Building:**

Emergency Call Center, Police Offices and other Police Administrative Offices



Feature	Basement	1st Floor	2nd Floor	3rd Floor	4th Floor	5th Floor	Notes
Accessible Restrooms	--	Yes	--	--	--	--	All restrooms in this building are accessible
Accessible Drinking Fountains	--	Yes	--	--	--	--	All drinking fountains in this building are accessible
Accessible Entrance(s)	--	No	--	--	--	--	All entrances exceed allowable pulling force
Area of Refuge	--	N/A	--	--	--	--	
Elevators	--	N/A	--	--	--	--	
Chair Lift	--	No	--	--	--	--	
Evacuation Chair(s)	--	No	--	--	--	--	
Nearest Accessible Parking	Parking Lot A, near University Police building						
Misc.							



### Legend

- Accessible Path of Travel
- ▲ Accessible Entrance
- Automatic Accessible Entrance
- ♿ Accessible Parking
- ☎ Emergency Phone
- P Parking Dispenser

## Visual Arts Center & Robert and Frances Fullerton Museum of Art

**Year Built:** 1996

**Number of Floors:** 3

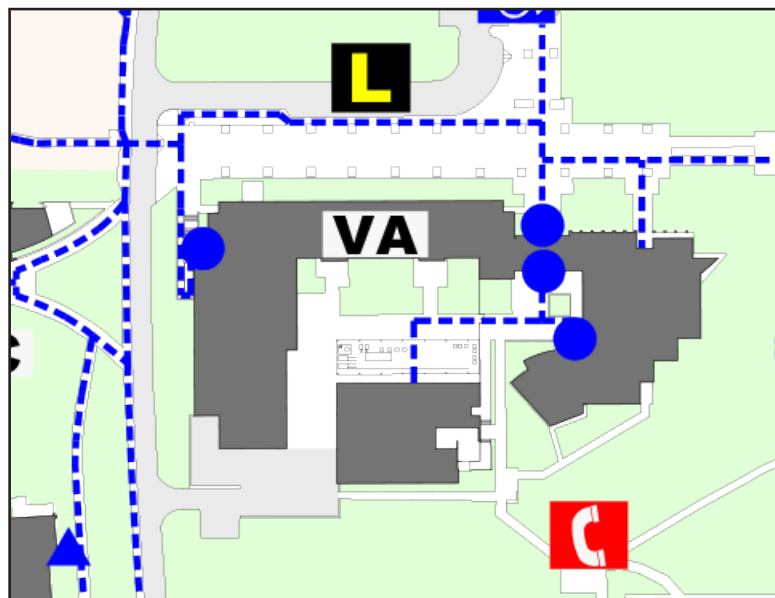
**Map Abbreviation:** VA

**Located in this Building:**

Art Department Classes, Studios, Labs, Administrative Offices, Faculty Offices, Robert V. Fullerton Art Museum



Feature	Basement	1st Floor	2nd Floor	3rd Floor	4th Floor	5th Floor	Notes
Accessible Restrooms	--	Yes	Yes	Yes	--	--	All restrooms in this building are accessible
Accessible Drinking Fountains	--	Yes	Yes	Yes	--	--	All drinking fountains in this building are accessible
Accessible Entrance(s)	--	Yes	N/A	N/A	--	--	2 accessible entrances located just west of museum and 1 at south end of quad
Area of Refuge	--	N/A	N/A	N/A	--	--	
Elevators	--	2	2	2	--	--	Serving all floors
Chair Lift	--	Yes	No	No	--	--	Serves Room 101; Max load: 750 lbs.
Evacuation Chair(s)	--	N/A	1	2	--	--	South stairwell; stairwells Nos. 1,2
Nearest Accessible Parking	Parking Lot M, parking Lot AA						
Misc.							



**Legend**

- Accessible Path of Travel
- ▲ Accessible Entrance
- Automatic Accessible Entrance
- ♿ Accessible Parking
- ☎ Emergency Phone
- L Passenger Loading Zone

## Yasuda Center

**Year Built:** 1995

**Number of Floors:** 1

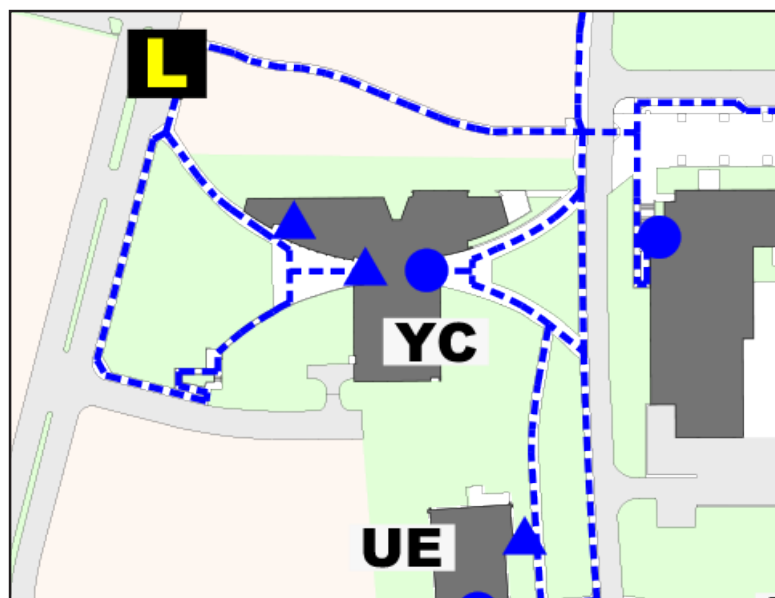
**Map Abbreviation:** YC

**Located in this Building:**

Yasuda Center for Extended Education



Feature	Basement	1st Floor	2nd Floor	3rd Floor	4th Floor	5th Floor	Notes
Accessible Restrooms	--	Yes	--	--	--	--	All restrooms in this building are accessible
Accessible Drinking Fountain	--	Yes	--	--	--	--	All drinking fountains in this building are accessible
Accessible Entrance(s)	--	Yes	--	--	--	--	1 accessible entrance on west side of building; another on east side
Area of Refuge	--	N/A	--	--	--	--	
Elevators	--	N/A	--	--	--	--	
Chair Lift	--	No	--	--	--	--	
Evacuation Chair(s)	--	N/A	--	--	--	--	
Nearest Accessible Parking	Parking Lot A, parking Lot AA						
Misc.							



Legend	
	Accessible Path of Travel
	Accessible Entrance
	Automatic Accessible Entrance
	Accessible Parking
	Emergency Phone
	Passenger Loading Zone





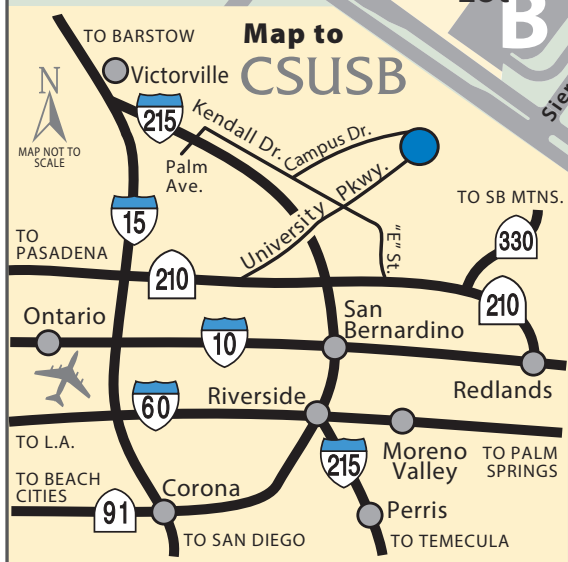
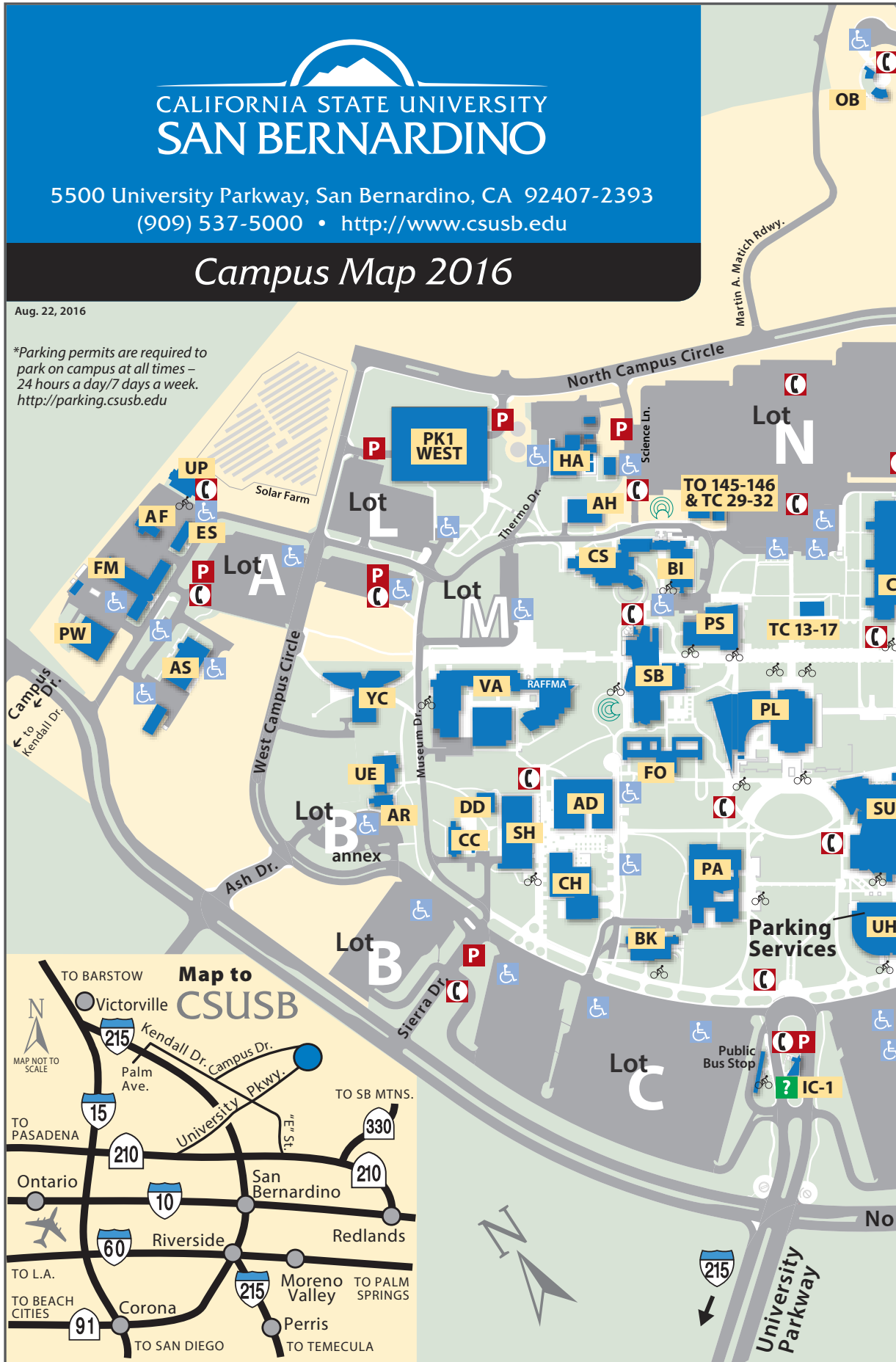
# CALIFORNIA STATE UNIVERSITY SAN BERNARDINO

5500 University Parkway, San Bernardino, CA 92407-2393  
(909) 537-5000 • <http://www.csusb.edu>







## Campus Map 2016

Aug. 22, 2016

\*Parking permits are required to park on campus at all times – 24 hours a day/7 days a week. <http://parking.csusb.edu>



## Legend

-  Disability/Medical Parking Areas
-  Emergency Phones
-  Palm Desert Campus Shuttle
-  Information Center (IC)
-  Parking Permit Dispensers\*
-  Bicycle Racks

- AD Administration
- AF Auto Fleet Services
- AH Animal House/ Vivarium
- AR Academic Research
- AS Administrative Services
- AV Arrowhead Village Housing
- BI Biological Sciences
- BK Coyote Bookstore
- CC Children's Center
- CE College of Education
- CH Chaparral Hall
- CO Commons
- CS Chemical Sciences
- DD Univ. Center for Developmental Disabilities
- ES Environ. Health & Safety



- FM Facilities Planning & Mgmt.
- FO Faculty Office Building
- HA HVAC Central Plant
- HC Student Health Center
- HP Health & PE Complex/ Coussoulis Arena
- IC Information Centers
- JB Jack H. Brown Hall
- OB Murillo Family Observatory
- PA Performing Arts/ Theatre/ Recital Hall
- PE Physical Education
- PK1 Parking Structure West
- PK2 Parking Structure East
- PL John M. Pfau Library
- PS Physical Sciences
- PW Plant/Central Warehouse
- RF Student Rec. & Wellness Ctr.
- SB Social & Behavioral Sciences
- SH Sierra Hall
- SU Santos Manuel Student Union
- SV Serrano Village
- TC Temp. Classrooms
- TK Temp. Kinesiology Annex
- TO Temp. Offices
- UE University Enterprises
- UH University Hall
- UP University Police
- UV University Village
- VA Visual Arts Center/Robert & Frances Fullerton Museum of Art
- YC Yasuda Ctr. for Ext. Learning



5500 University Parkway  
San Bernardino, CA 92407  
[www.csusb.edu](http://www.csusb.edu)