

welcome!

informed design | people

discovery phase | envisioning

- SPECIAL - VGE
- PRAYER > 50
 - EVENT: UNCHURCHED > 300
- 250-) 2X/STR
- ASSEMBLY
- SOCIAL SPACE

- DIVERSITY OF PROGRAM = SHOWCASE
- GLOBAL CONNECTION
- TRIP FUNCTIONALITY
- CUSTOMER SERVICE FOR STUDENTS

- CONNECTION OF DEPARTMENTS
- INDOOR/OUTDOOR CONNECTION
- TUTOR SPACES
- AUDITORIUM/LECTURE + INFO BACK-DROP (ORIENTATION, CERTIFICATE CEREMONIES)
- PARK AREA FOR FACULTY



* DEAN (1) REC. CONF. (B-10)
 (1) RECEPTION
 (1) OFF. (ASST.)
 (1) DEAN (SECURED STORAGE)
 SHARED RESOURCES

B. BREKIDON (STAFF)
 C. CONFERENCE (OFF-303) 4

- FLEXIBILITY / TEACHING W/ ~~X~~ ACADEMIC TECHNOLOGY
- PORTABLE WALL ISSUES (ACOUSTICS)
 - INTL STUDENTS (LANGUAGE)
- TAILORED CLASSROOMS IN ADDITION TO FLEXIBLE TYPES (LECTURE VS. COMPUTER)
- AMENITIES (PRINT)
- BETTER LIGHTING + NATURAL DAYLIGHT
- OUTDOOR CLASSROOMS (LEARNING)
- WI-FI
- GROUP WORK IN CLASSROOM
- LOCKABLE STORAGE
- CLEAN-UP STATIONS



**workshops
+
facility
tours**

discovery phase | inspiration

Welcoming (sense of belonging)

Transparent (visible + involved)

Social

Climate + Context

Unity (one college, one team)

We Care

Service

Foster Interaction

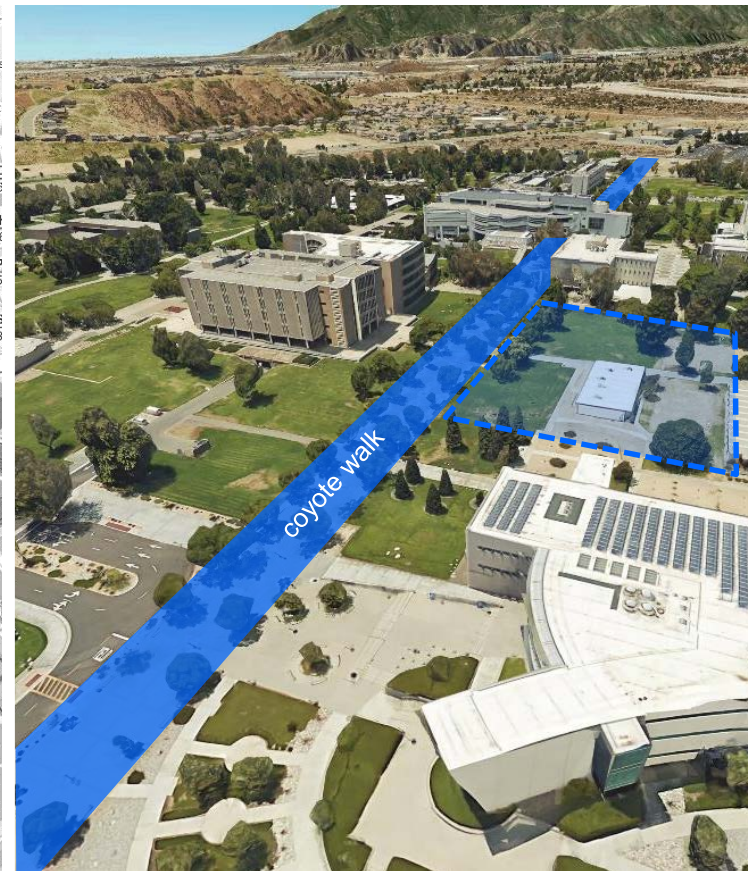
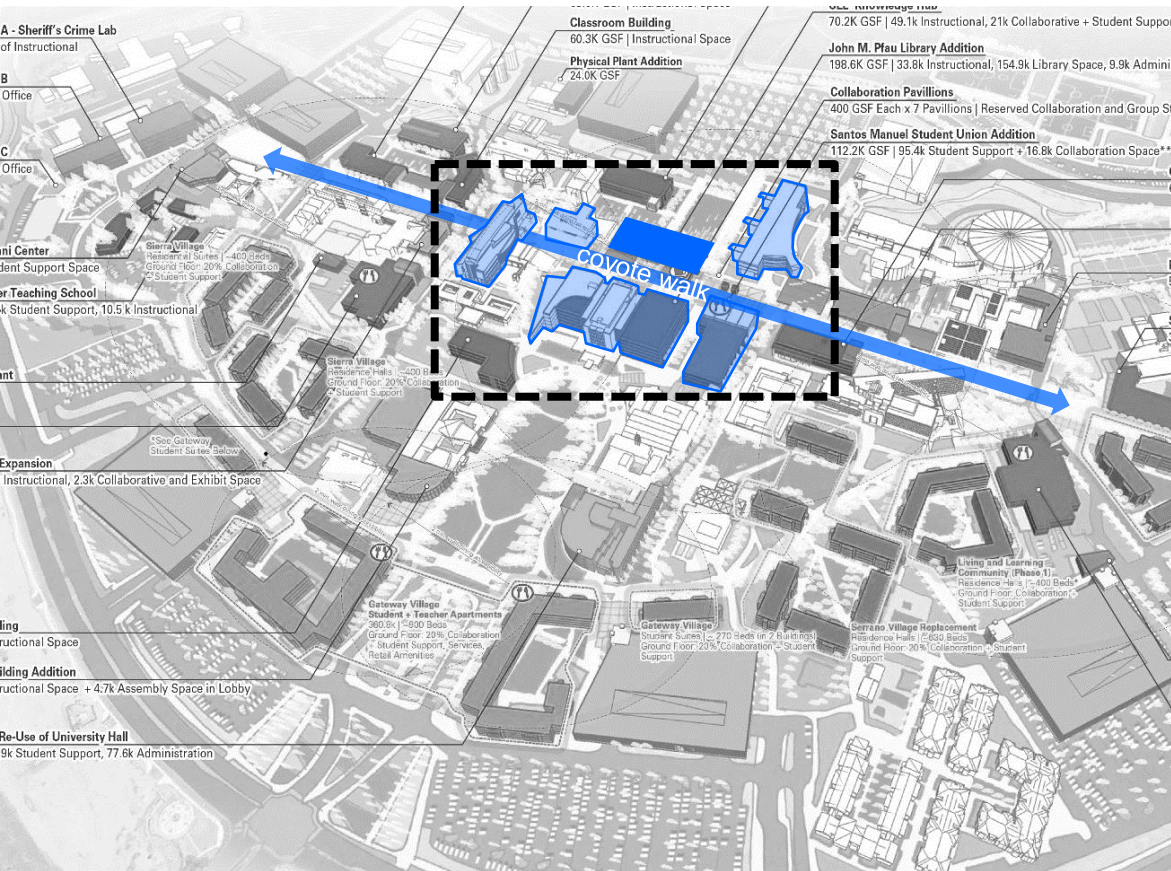
Flexible

Global Experience



informed design | campus vision

campus | master plan



site plan

parking lot

to campus
to buildings

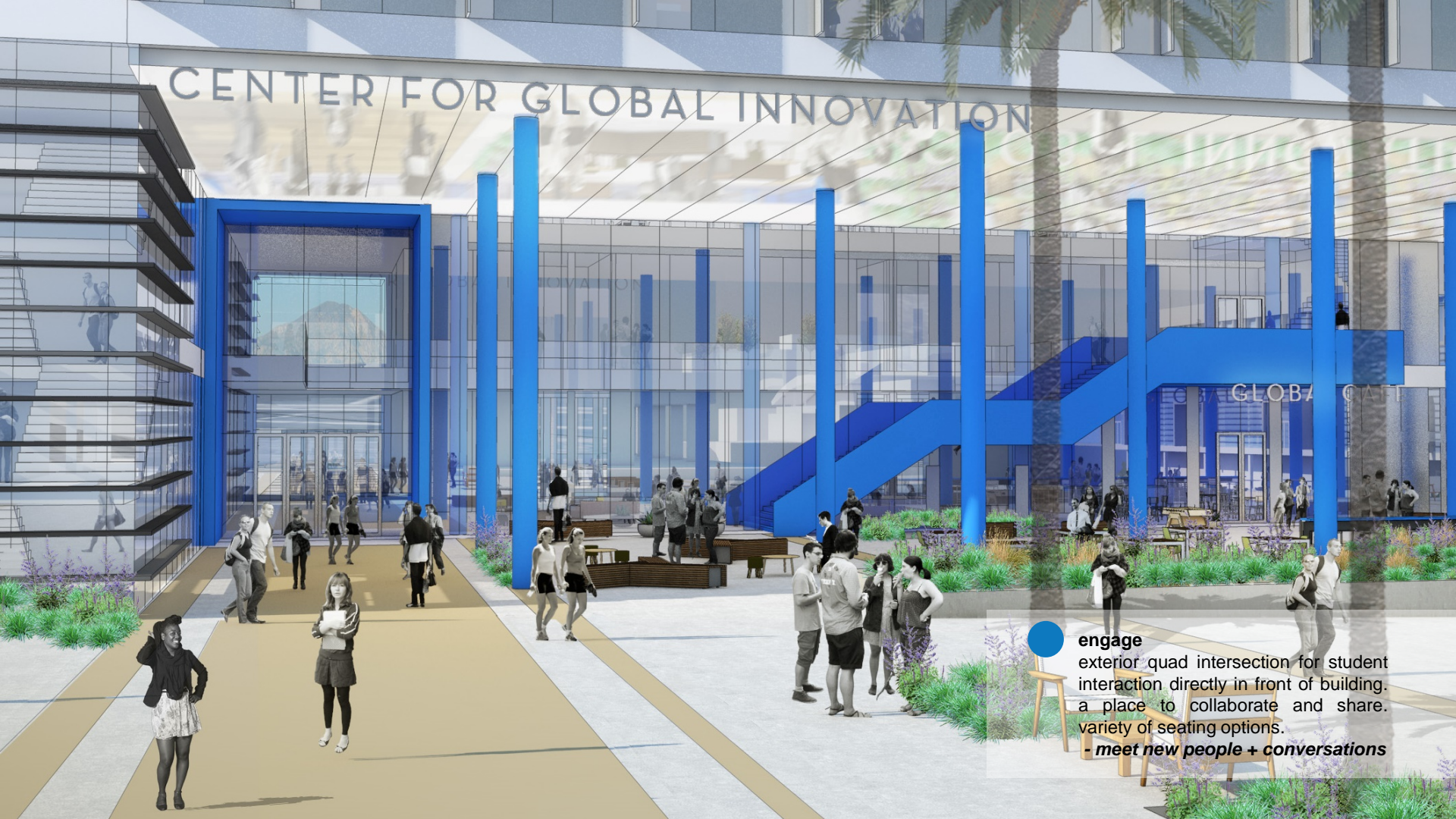
college of education

physical sciences

campus walk







CENTER FOR GLOBAL INNOVATION

engage

exterior quad intersection for student interaction directly in front of building. a place to collaborate and share. variety of seating options.

- meet new people + conversations



GLOBAL CAFE

CAFE



Neque porro quisquam est qui dolorem ipsum quia dolor sit amet, consectetur, adipisci velit...

Duis autem vel egestas ma eget tincidunt lobortis. Ut enim aliquam dui eu nibh ultricies diam.



Ut enim aliquam dui eu nibh ultricies diam. Ut enim aliquam dui eu nibh ultricies diam.

Neque porro quisquam est qui dolorem ipsum quia dolor sit amet, consectetur, adipisci velit...



inviting

pedestrian promenade entry onto campus
with trees, enhanced paving + campus
signage to distinguish the front door to the
college of extended learning
- *welcome!*



third floor | roof deck

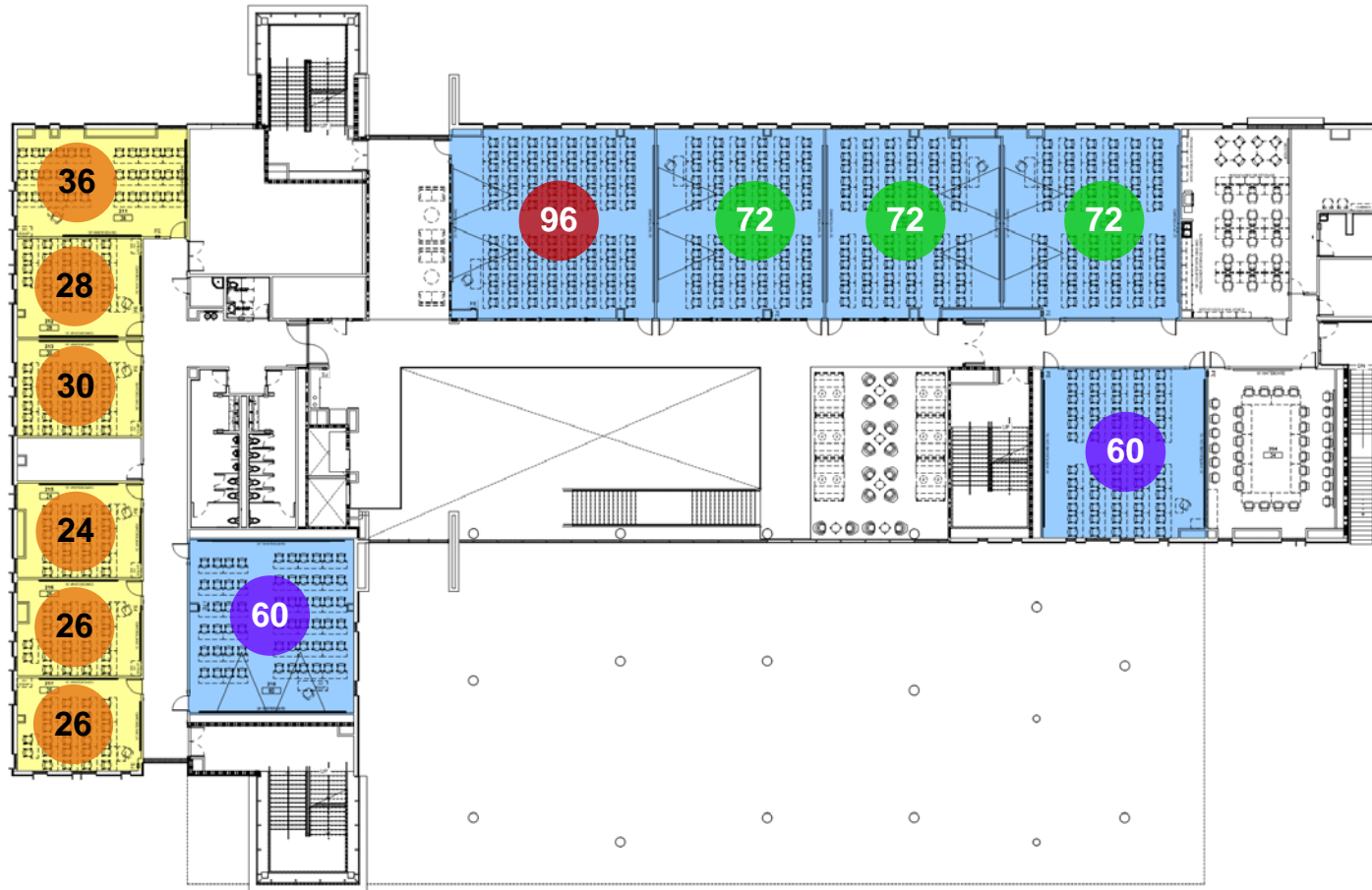


informed design | zoom in

first floor | academic



second floor | academic

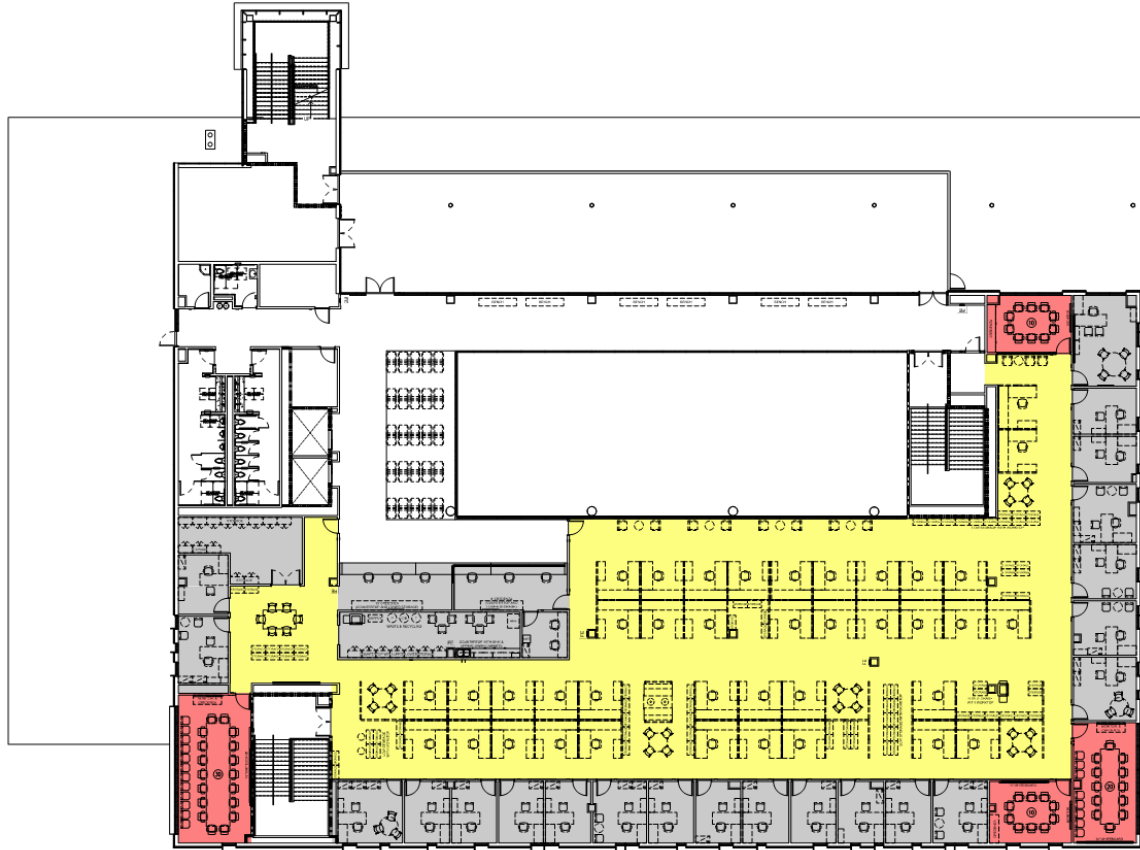


SEATING CAPACITIES

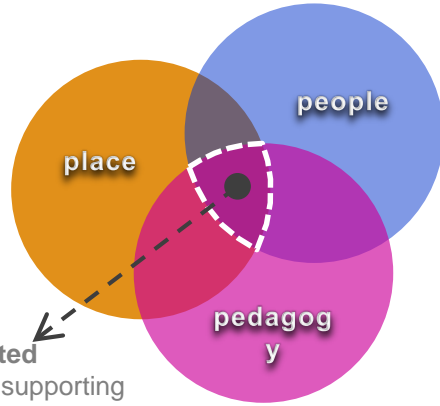
- S** 24 – 38
- M** 60
- L** 72 – 76
- XL** 94 – 96
- 2XL** 250

- University
- CEL

third floor | workspace



approach | where you learn matters



interconnected
engagement supporting
people + activities

focus collaborate learn socialize



flexibility



controllability



choice



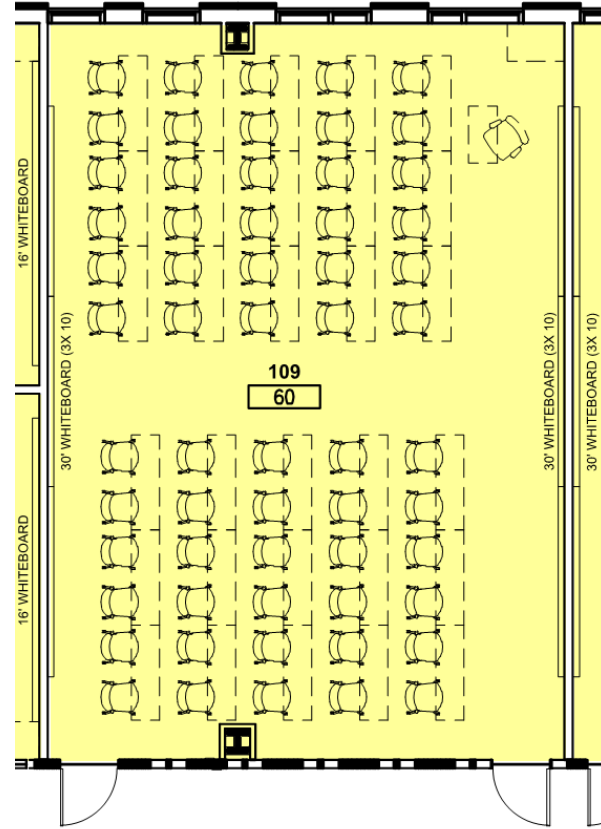
classrooms | typical layout



maximized writing surface + short-throw projection



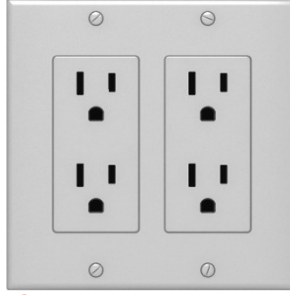
flexible furnishings + coordinated technology



classrooms | controllability



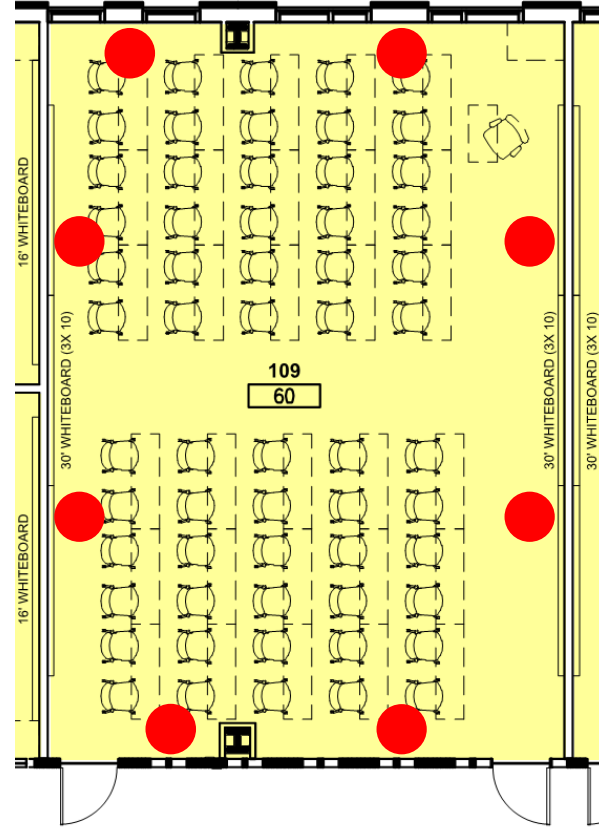
acoustical ceiling with controllable LED lighting



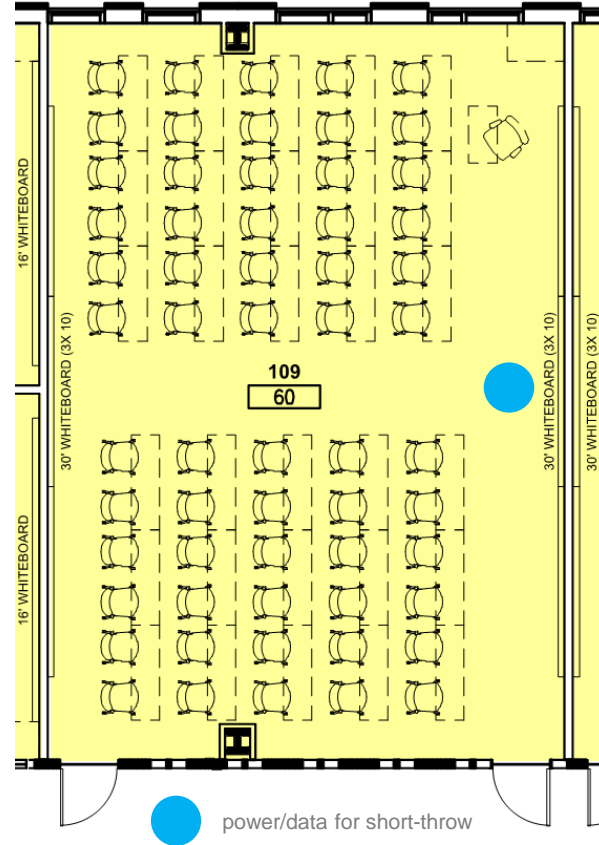
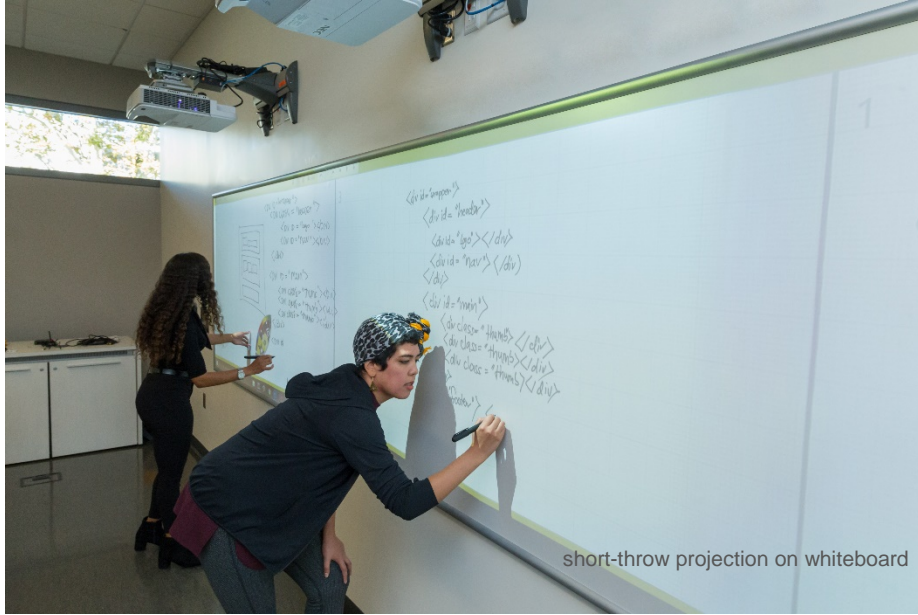
quad receptacle



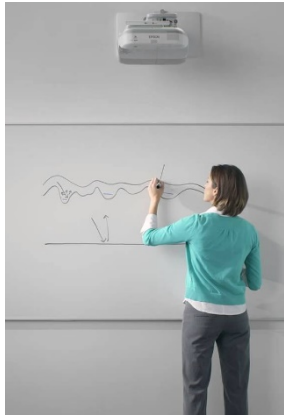
flexible furnishings



classrooms | integrated technology



classrooms | content creation



PROJECT + WRITE

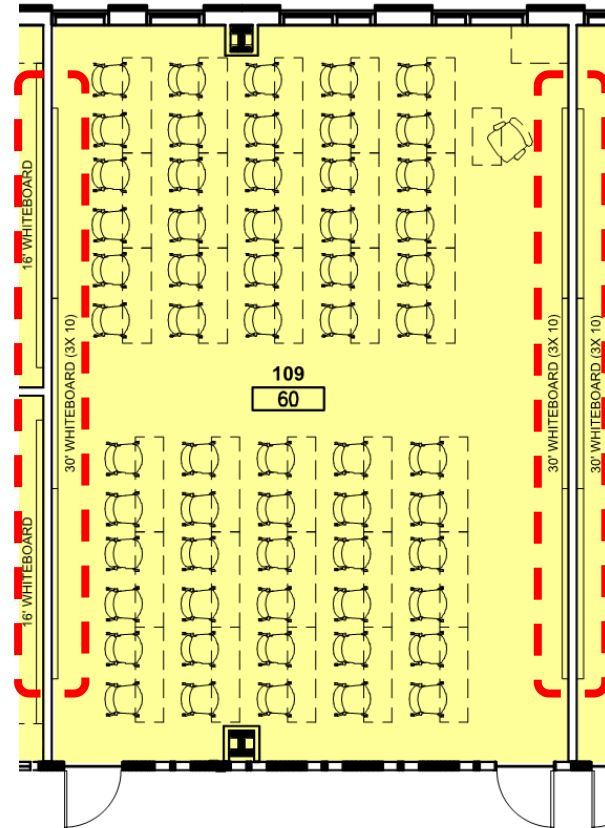


PolyVision offers durable surfaces that can be used for projection. The Low gloss (Type L) and the Satin gloss (Type S) are ultra smooth and offer significantly less distortion from light reflection for **better visibility** and **dry erasability**.

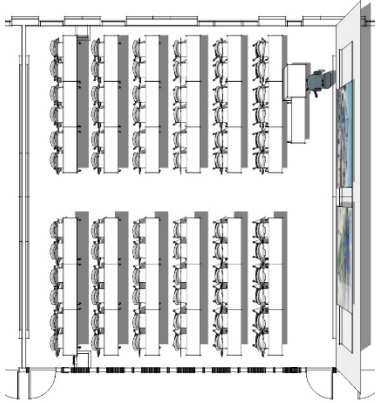
Type P is a matte surface that provides excellent writability and **low glare**. This projection markerboard is a wet erase surface that is resistant to wear and provides longevity for any classroom.

Unlike other projection surfaces, **e3 CeramicSteel** is magnetic and handles a variety of markers including dry-erase, semi-permanent, water soluble, or permanent. All PolyVision products e3 products are backed by PolyVision's **Forever Warranty**.

For use with short throw, long throw or interactive projectors.

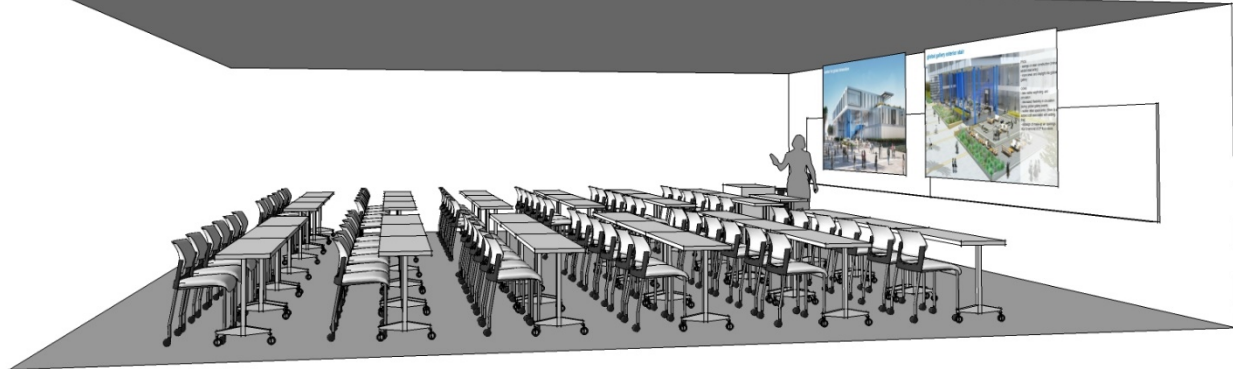


classrooms | large (70+ seats)



dual projection

- 16:9 aspect ratio
- screen width: 10'-8"
- screen height: 6'-0"
- 147" diagonal

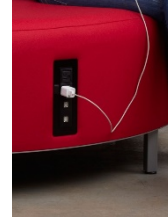
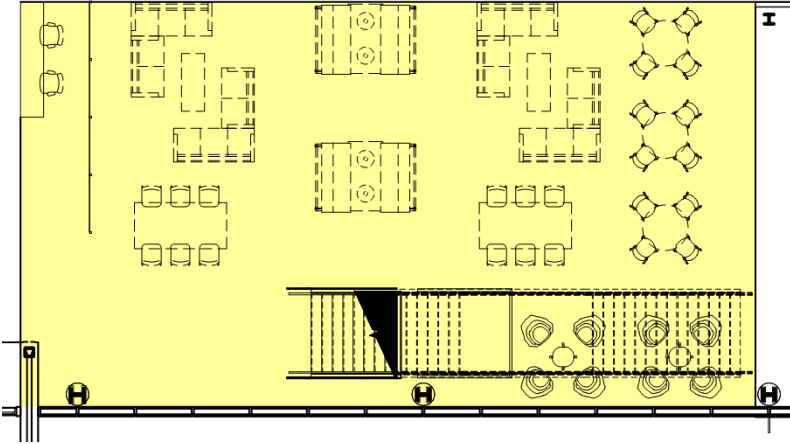
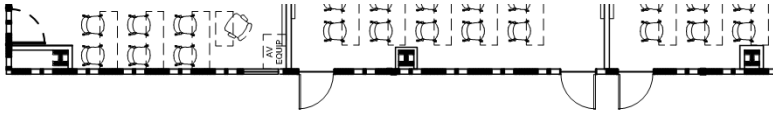
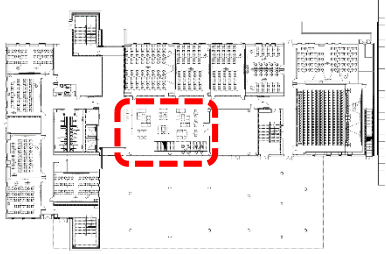


first floor | auditorium

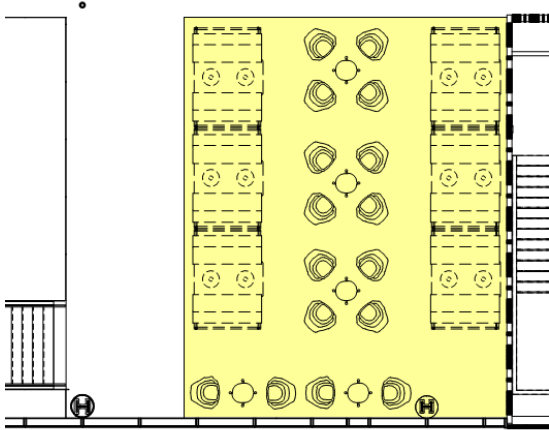
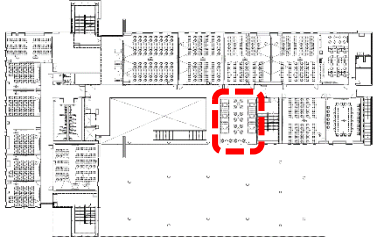


upholstered fixed seating
with tablet arms & power

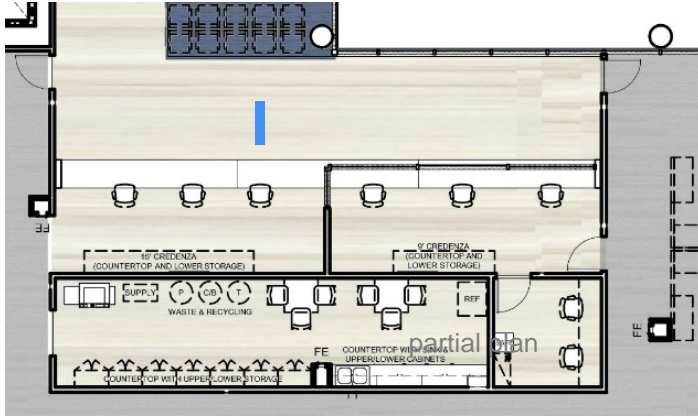
first floor | global gallery



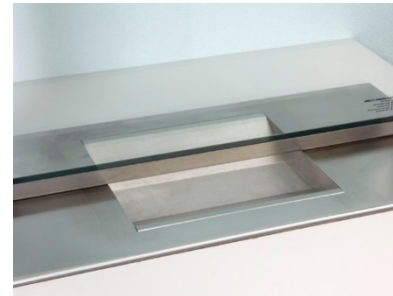
second floor | global gallery



third floor | service desk

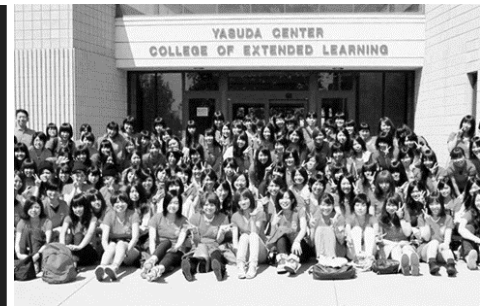
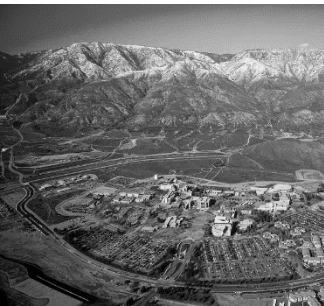


financial services



pass through window





thank you!