

The BASW Degree

At California State University
San Bernardino

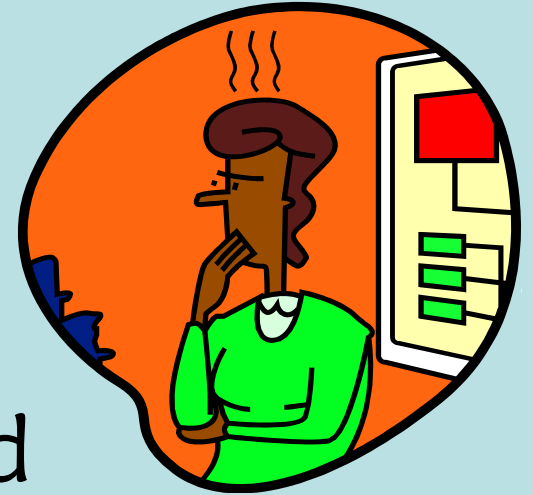
Accredited by the Council on Social Work Education

What is the goal?



- To educate students for beginning social work (SW) practice-helping people and communities solve problems and enhance social functioning
- For example, working with Child Protective services to strengthen families and keep kids safe.

- So how do you get there?

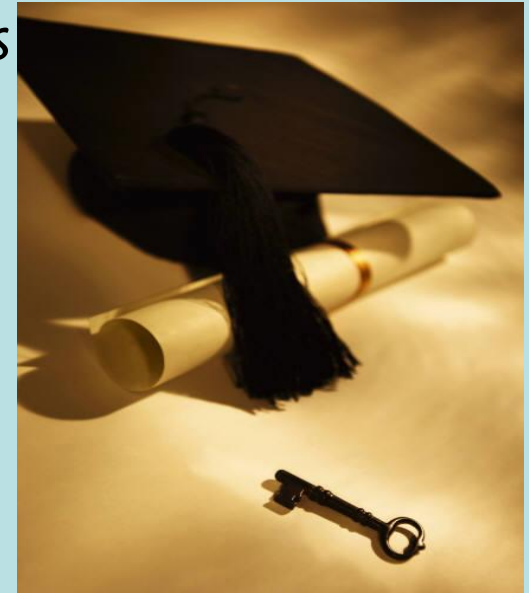


- What are the challenges and opportunities along the way?

About Undergraduate Degrees

- Students need to meet the requirements of the university AND the requirements of the specific degree
- All universities have required lower division courses (numbers in the 100's and 200's) And required upper division courses. (numbers in the 300's and 400's)

Lower Division coursework can be taken at community colleges. You should ensure you are taking the correct courses. Upper division courses can only be taken at a four-year university.





First Steps

- **As soon as possible, take SW 200 to find out if Social Work is a good fit for you.**
 - Cross Enrollment for Spring, 2019
 - Class will be available Summer 2019
 - Equivalent courses available at Moreno Valley College, Crafton Hills College, and Victor Valley College
 - See Prerequisite Equivalent List for more information
 - Cross enrollment available Fall, 2019 (if you aren't applying for Fall, 2019).
- **Work on the BASW Application!**

Important to Know!

- The BASW program accepts students applications in March, and they are due Friday, March 29, 2019. Students begin courses in the major only in the fall following acceptance.
- The BASW courses are offered in a strict order- and it takes two years to complete them
- The second (last) year of the program you will need 2 free days per week for field-no exceptions! These need to be daytime hours.

- What courses should you take before applying?



Prerequisite Courses

- The BASW program requires that you take certain lower division courses before entering the major.
- We may allow you to finish one or two after admission to the major. This depends on the feasibility of your overall plan.
- **SW 200 must** be completed
 - (can be taken the summer prior to starting the program)

Don't Forget



- You will also have CSUSB lower division general education courses to complete
- If you have too many lower division GE courses to take when you apply, we may not admit you because it will not be feasible to complete in 2 years.

Tips

- There are usually more opportunities to take GE courses, so try first to get other courses you need and fill in the GE courses.
- A 2.5 GPA is required for admission into the BASW program.
- Some prerequisite courses have a minimum grade (C) required (SW 200, CJUS 101 and Statistics)-so plan to do well in your courses!

- Your goal is to have all, or nearly all of your social work prerequisites completed so that you can apply to the BASW major in March (application is due March 29 in our office)
- If accepted you will start the program the following Fall



The Admission Process

- Admissions Packet is available online
- What's in the packet? How long will it take to complete it?

Admissions Packet

- Application Form
- Work/ Volunteer Experience Form
- Personal Statement
- Field Placement Statement
- Title IV-E Interest Form
- Demographic Information
 - For statistics **only**
- Provisional Plan of Study
- Transcript (unofficial OK)/PAWS
- Letters of recommendation (2)



Deadlines!

- The end of March (Friday March 29!) is the deadline for admission
- Space is limited in the program, so getting your admission application in before the deadline is very important.
- Late applications will not be accepted



When do you find out?

- Letters go out to all applicants at one time.
- If you have your application in by the deadline, you should know by the end of May.

Title IV-E (Public Child Welfare) Stipend Program

- For those students who are...
 - interested in working in public child welfare
 - willing to **commit** to working for a county child welfare agency in California for at least one year upon graduating from the BASW program
- The stipend is \$15,000.00 (3 installments of \$5,000.00) granted in your second year in the BASW program. *You must apply separately once admitted to the program.*

Main Social Work Courses

- Year One (Junior Year)
- Fall
 - SW 302A HBSE I
 - SW 300A Policy I
- Winter
 - SW 302B HBSE II
 - SW 300B Policy II
- Spring
 - SW 301 Research
 - SW Elective
- Year Two (Senior Year)
(semesters begin Fall, 2020)
- Fall
 - SW 4001 Practice I
 - SW 4011 Field Placement I
- Spring
 - SW 4002 Practice II
 - SW 4012 Field Placement II
 - SW 4100 Integrative Seminar

Examples of Field Placements

- Public child welfare agencies
- Public mental health agencies
- Department of Aging and Adult Services
- Bilingual Family Counseling
- Family Service Agency
- Building a Generation
- Catholic Charities

Keep your eye on the ball!



- Take Social Work 200 as soon as possible!
- Know the admission procedures
 - For the BASW Program (through our application on our website)
 - For the University (if you are a transfer student or a new admit to CSUSB)
- Know what the program entails once you are admitted
- Know what else is required by the university to graduate

For Further Assistance



- Double check our website to see if you can get your question answered
- Contact our office: (909) 537-5565, Set up a time for pre-major advising
- Dr. McAllister (BASW Program Director):
cmcallis@csusb.edu

Any Questions?

- Thank you for coming!

