



Retention & Remediation

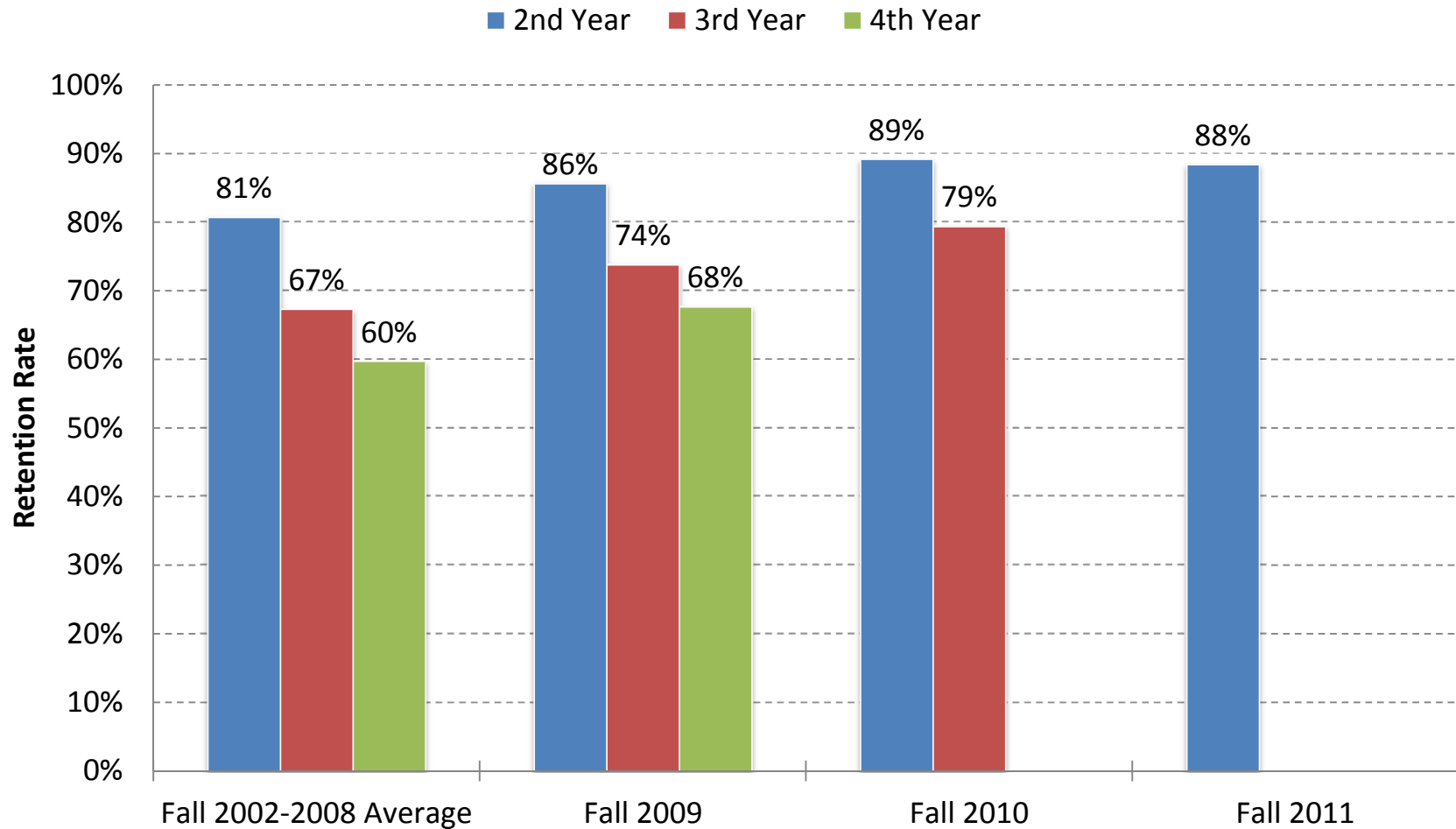
Muriel C. Lopez-Wagner

Faculty Senate

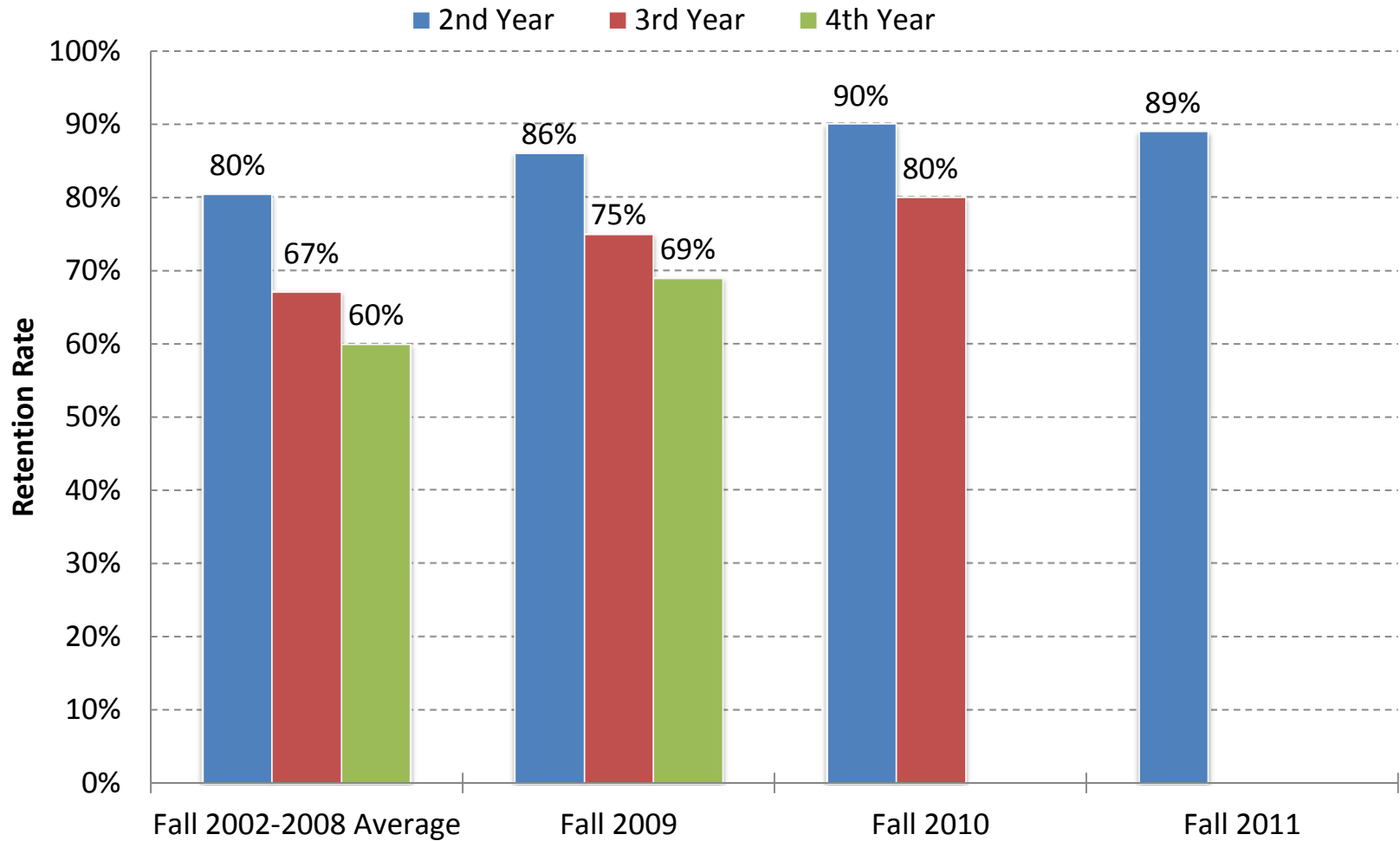
January 15, 2013

<http://ir.csusb.edu>

Retention Rate of First-Time Full-Time Freshmen



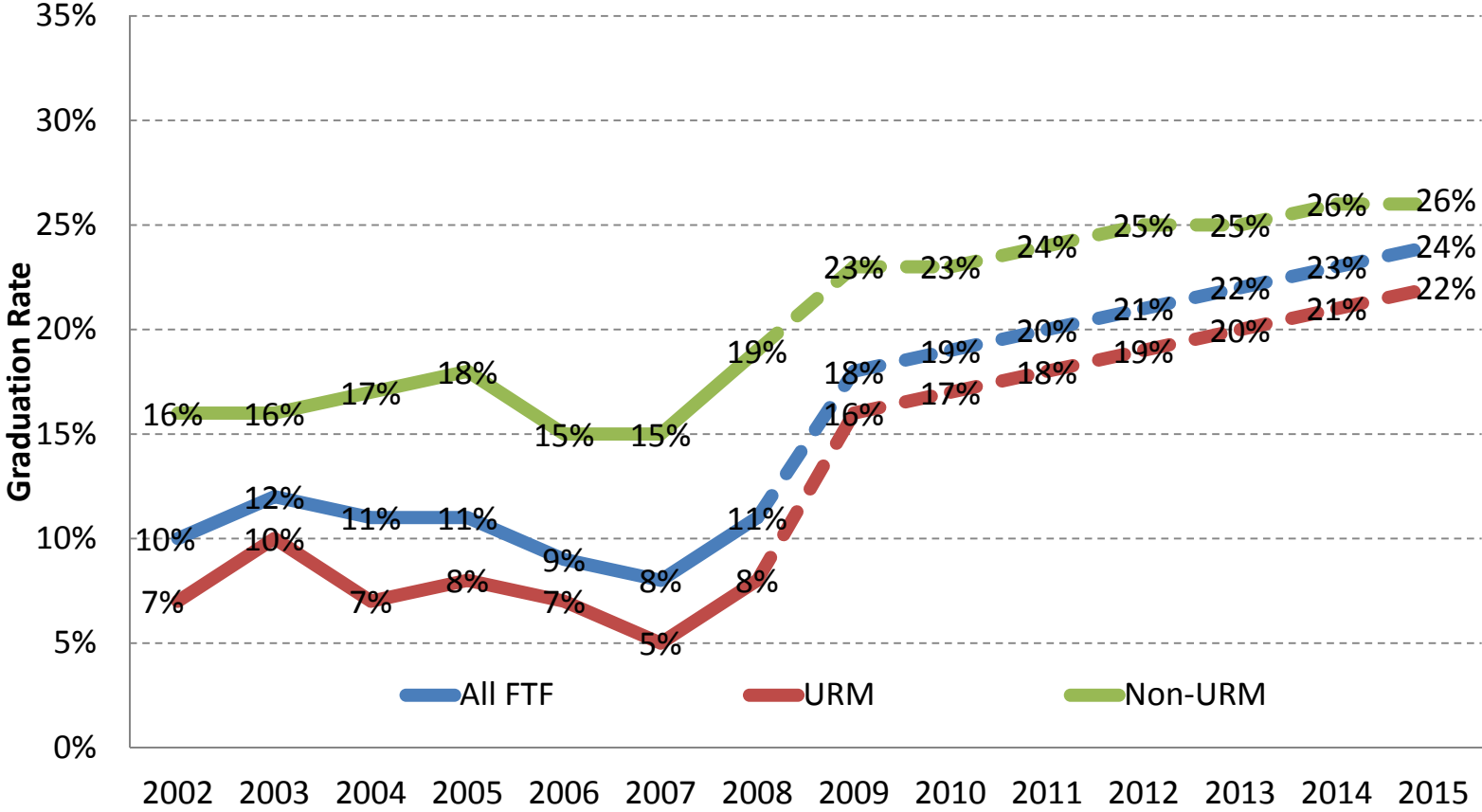
Retention Rate of First-Time Full-Time URM Freshmen



Underrepresented Minority (URM): African American, Hispanic, Native American.

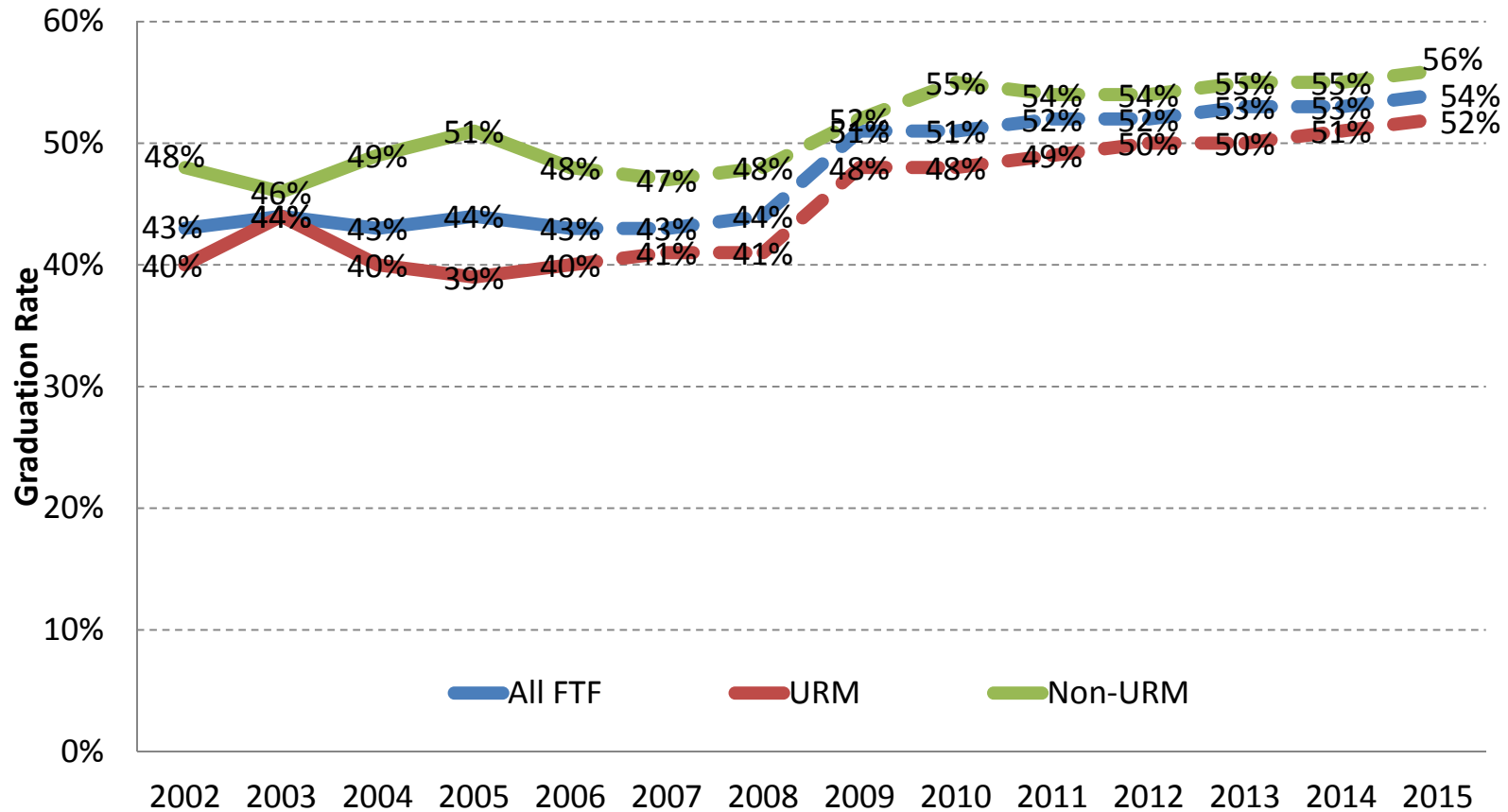
Four Year Graduation Rate

Actual & Projected First Time Freshmen
Four Year Graduation Rate



Six Year Graduation Rate

Actual & Projected First Time Freshmen Six Year Graduation Rate

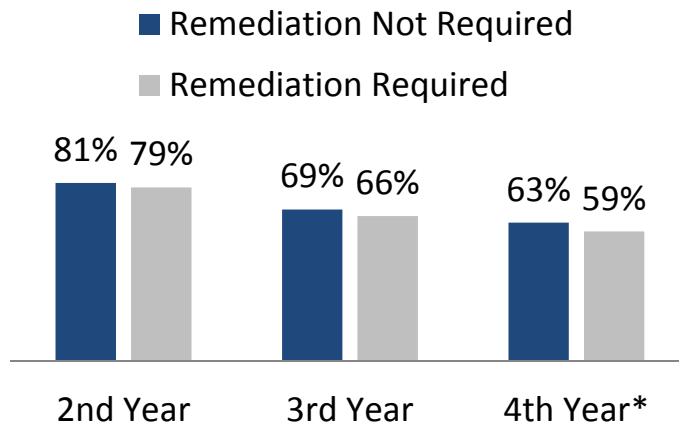


Sample for Remediation Study

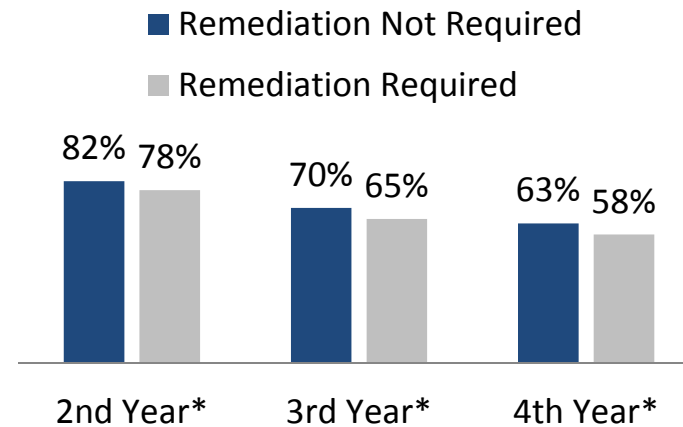
- Fall 2003-2005, 4660 FTF
- Exempt, Passed, or Required Remediation based on EPT and ELM
- Of 4660 students with remediation code, 68% required remediation
- Yes/No Remediation
- 0 Quarters, 1-5 Quarters of Remediation

Impact on Student Retention

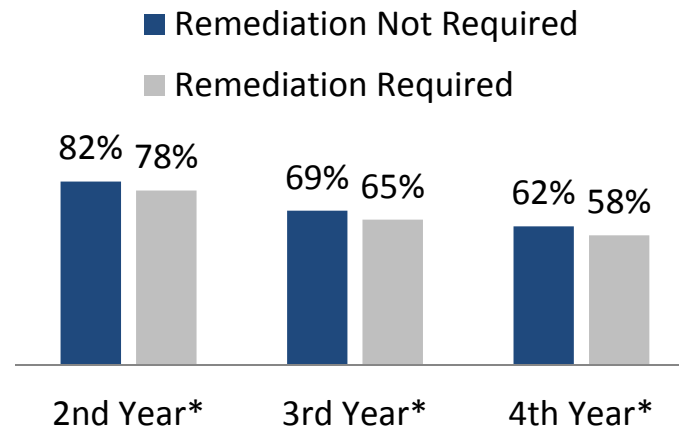
Retention by EPT Status



Retention by ELM Status



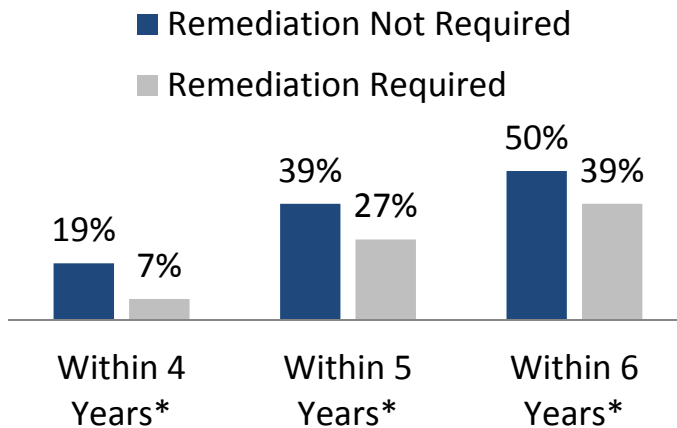
Retention by EPT & ELM Status



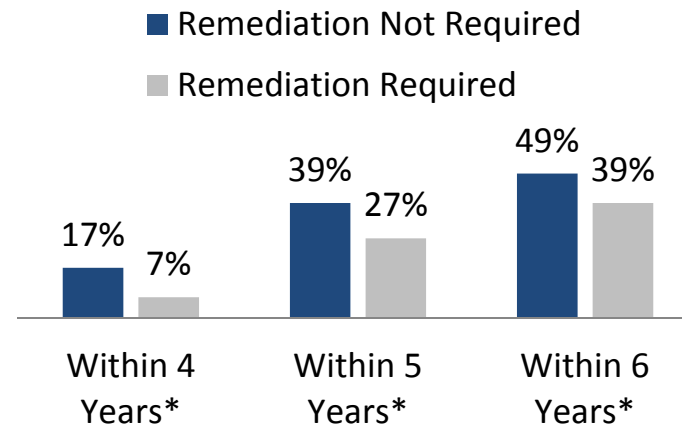
* p<.05

Impact on Graduation Rates

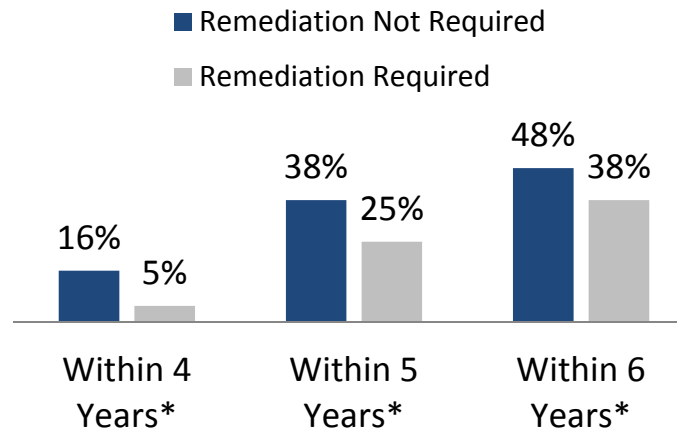
Graduation by EPT Status



Graduation by ELM Status



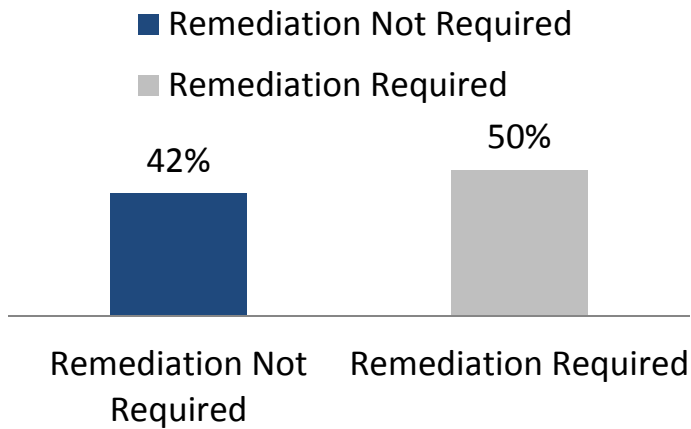
Graduation by EPT & ELM Status



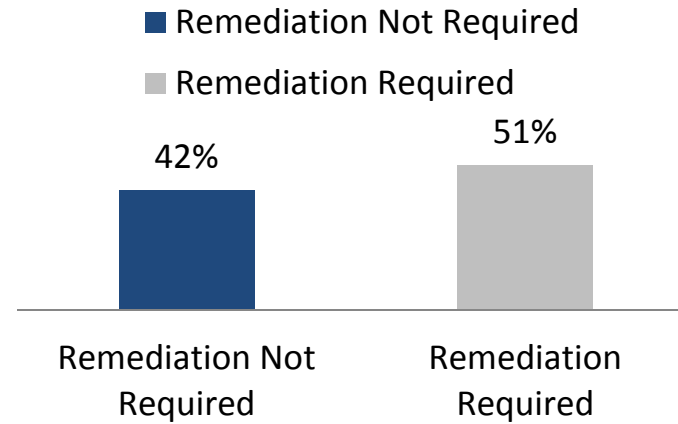
* p<.05

Impact on Dropout Rates

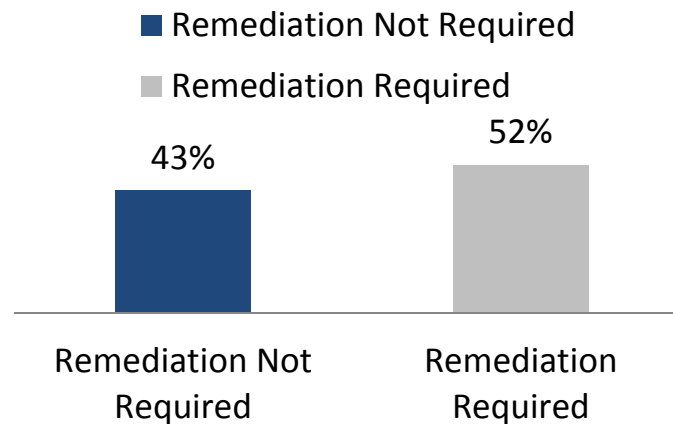
Dropout by EPT Status*



Dropout by ELM Status*

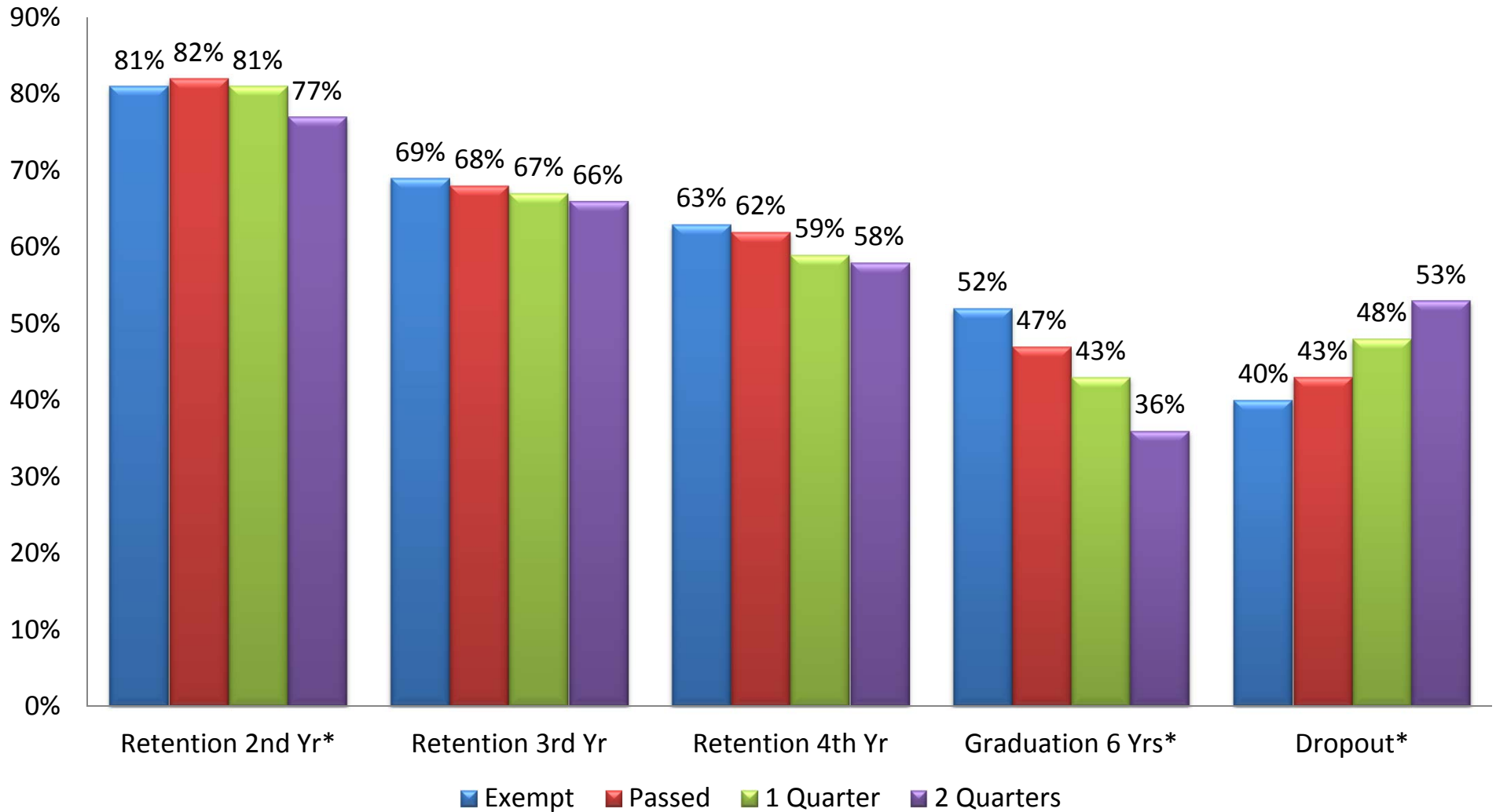


Dropout by EPT & ELM Status*

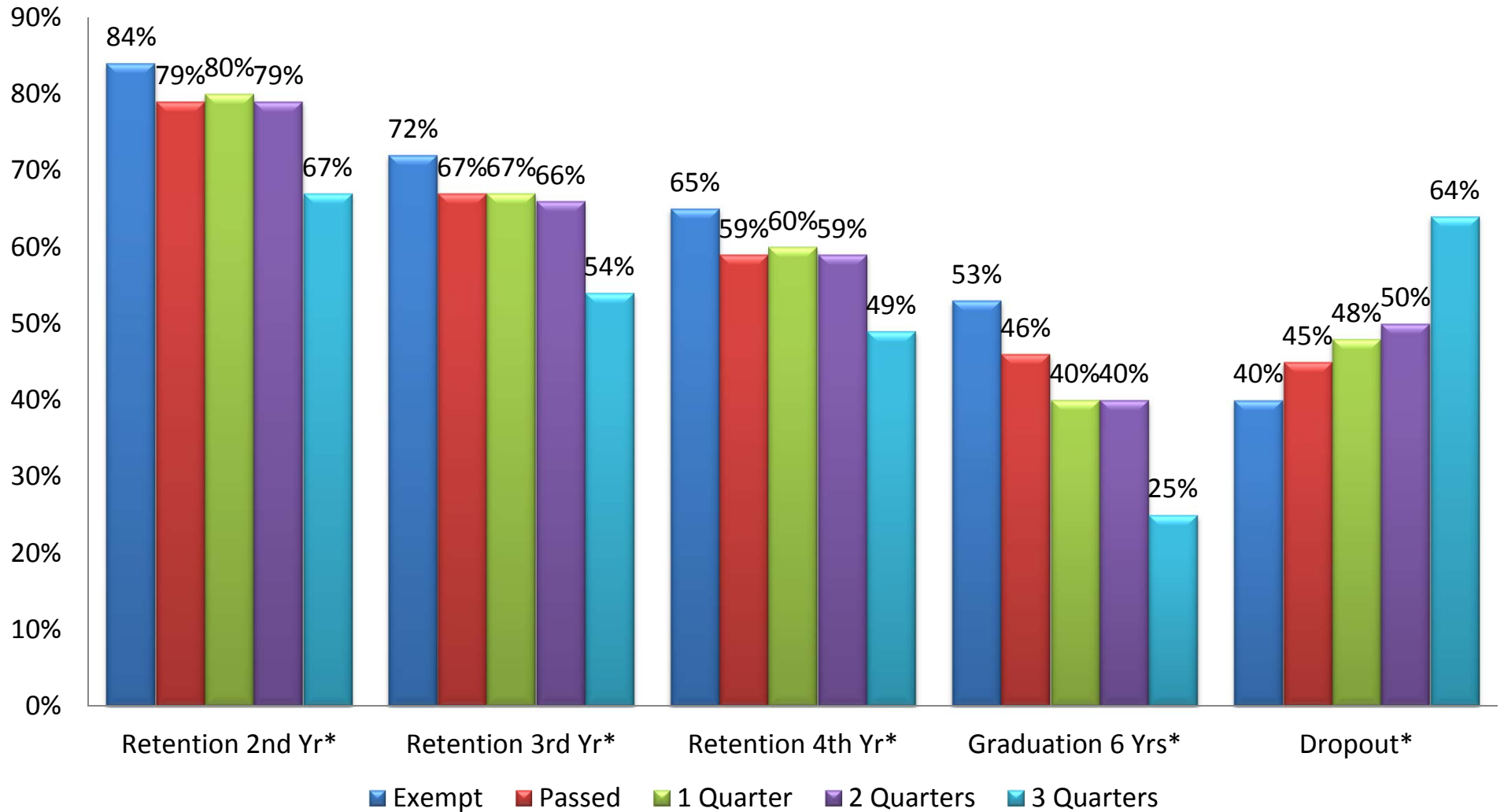


* p<.05

Remediation Time in English



Remediation Time in Math



Remediation Time in English & Math

