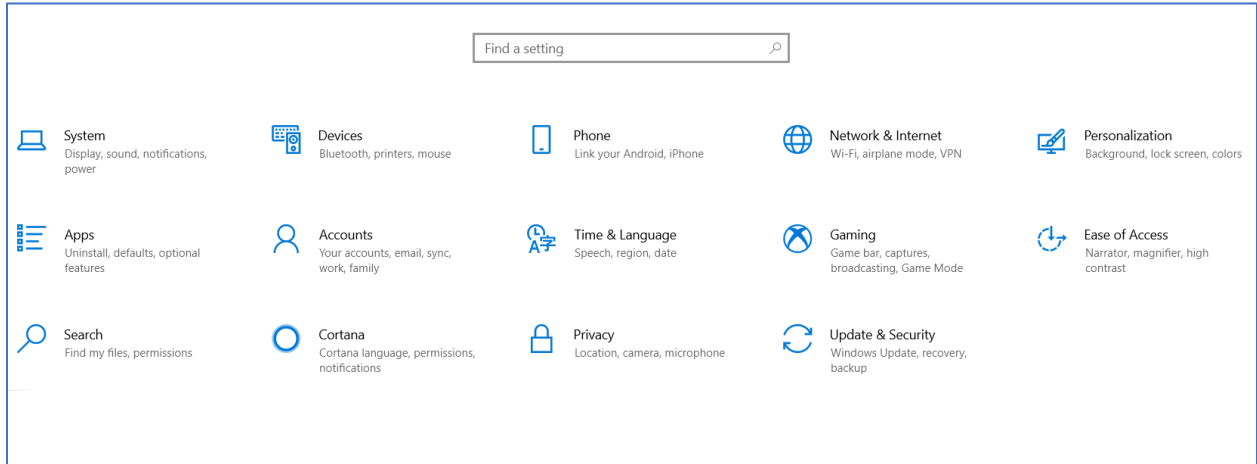


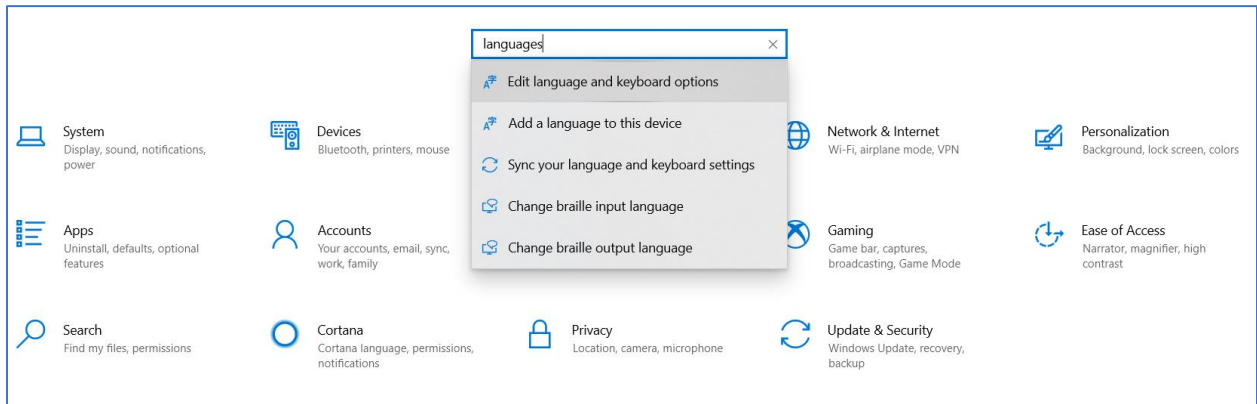
Using Another Language Keyboard with LockDown Browser (Windows 10)

Example below sets the Japanese Keyboard.

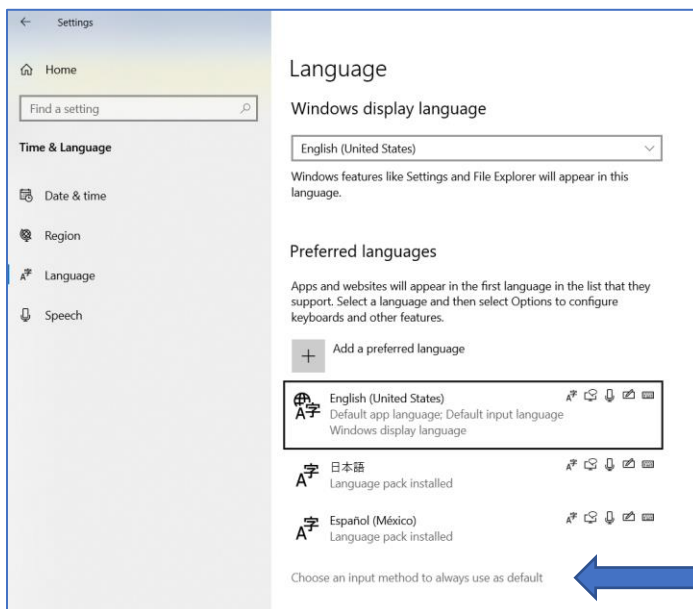
Step 1: Go to Settings.



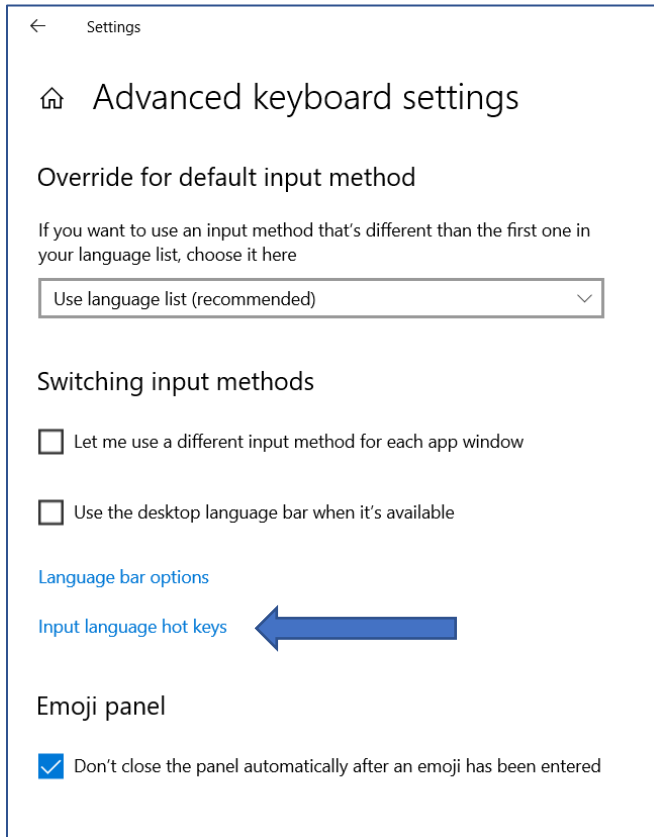
Step 2: Enter “languages” and choose “Edit language and keyboard options”.



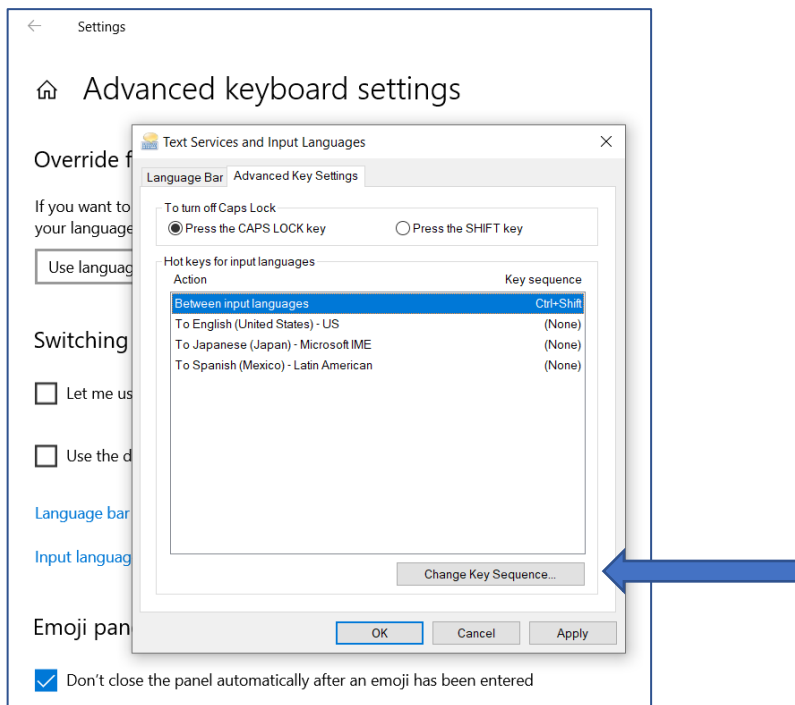
Step 3: Click on “Choose an input method to always use as default”.



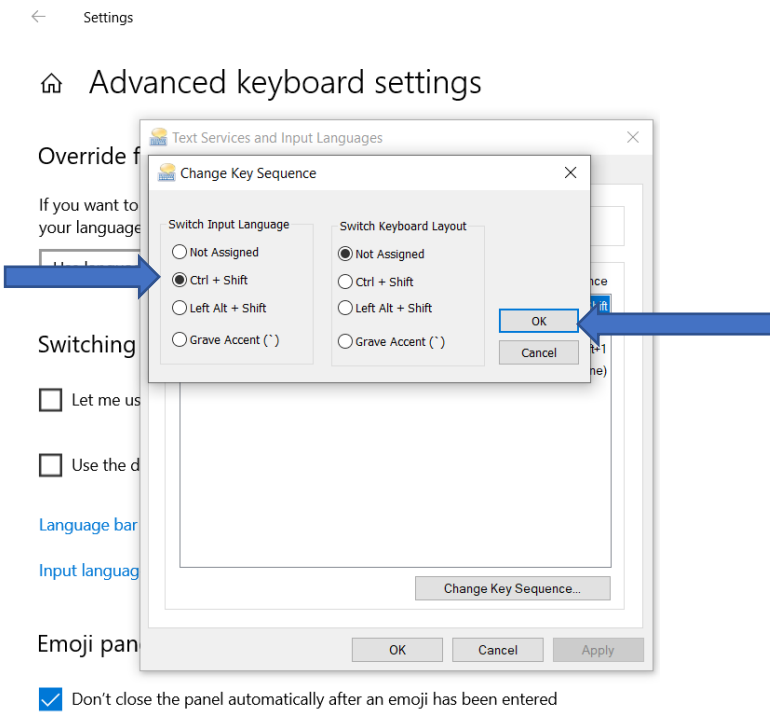
Step 4: Click on “Input language hot keys”.



Step 5: Click on “Change Key Sequence” button.



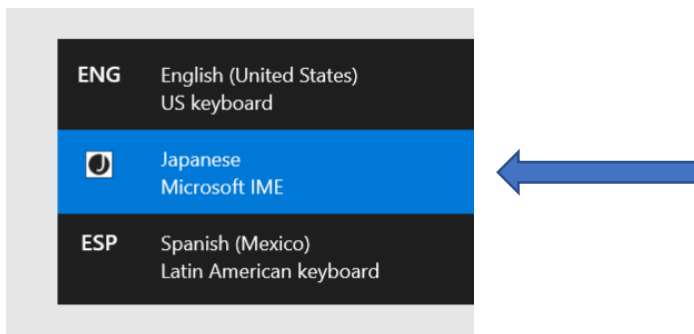
Step 6: First select “Ctrl + Shift”, and then click on “OK” button.



Step 7: Once you have set up the Key Sequence (Steps 1-6), open Respondus LockDown Browser.

Step 8: Open Blackboard, and navigate to exam.

Step 9: Click on the textbox where you type your answer, and press Ctrl + Shift, and without releasing the Ctrl key, tap Shift key until you select the Japanese keyboard.



Step 10: Now that you are in the Japanese keyboard, press Ctrl + CAPSLOCK to switch to Hiragana Input. With this setting you can type all three types of characters (Hiragana, Katakana, and Kanji), which will appear in the selection box below your text.

だいがく|

だいがく	×	🔍
大学		
大学院		
大学生		
大学教授の		

▼

Ctrl + Delete to remove this candidate

こんさーと|

コンサート	×	🔍
コンサートホール		
コンサートの		
コンサートチケット		
コンサートに		

▼

Tab to select a prediction candidate