

Student Opinion of Teaching Effectiveness (SOTE)- College of Arts & Letters Spring 2021 Term Summary

1. Rate your interest in the subject matter of this course before you took the class.

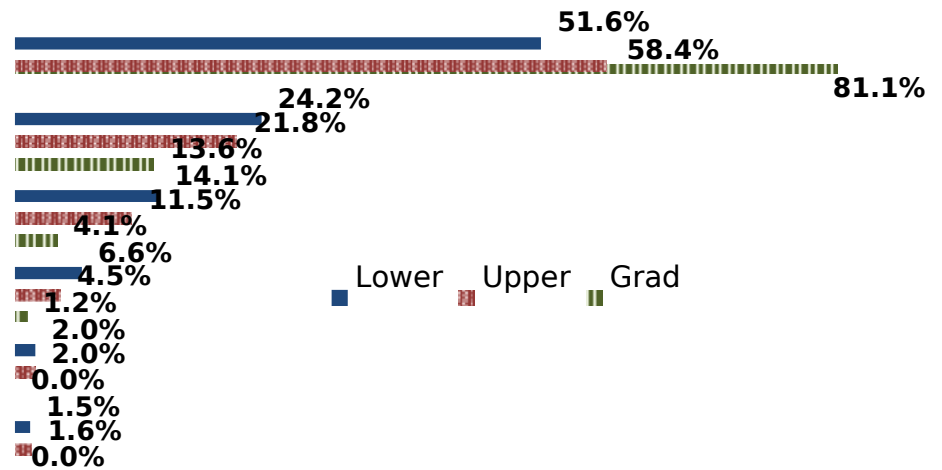
2. How many class sessions did you attend?

	Response by Course Level			
	Lower	Upper	Grad	Total
Very High (1)	26.7%	33.4%	50.9%	30.5%
High (2)	22.8%	23.6%	23.1%	23.2%
Moderately High (3)	31.0%	24.8%	17.2%	27.7%
Moderately Low (4)	12.7%	12.4%	5.9%	12.4%
Low (5)	4.3%	3.5%	2.4%	3.9%
Very Low (6)	2.6%	2.3%	0.6%	2.4%
Mean	2.5	2.4	1.9	2.4
Median	3	2	1	2
Count	3508	3354	169	7031

	Response by Course Level			
	Lower	Upper	Grad	Total
All (1)	60.2%	64.6%	68.9%	62.5%
Almost All (2)	31.1%	29.2%	28.1%	30.1%
More than Half (3)	4.3%	3.2%	1.8%	3.7%
Less than Half (4)	4.5%	3.0%	1.2%	3.7%
Mean	1.5	1.4	1.4	1.5
Median	1	1	1	1
Count	3226	3098	164	6488

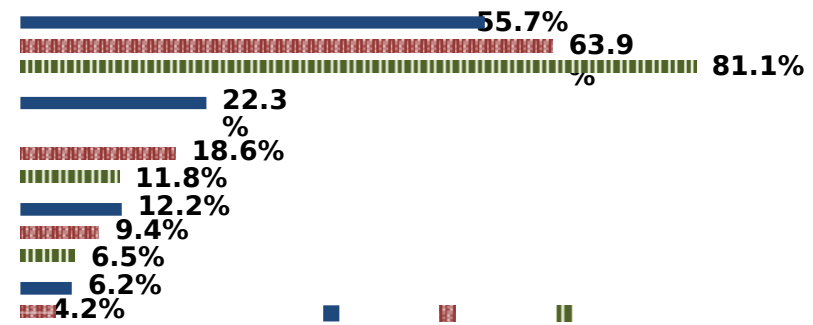
3. Why did you take this course? Choose all that apply.	Response by Course Level			
	Lower	Upper	Grad	Total
3a. The course fulfills a general education requirement.	69.9%	50.7%	26.0%	59.7%
3b. The course fulfills a requirement in my major.	42.7%	66.2%	90.5%	55.0%
3c. I have enjoyed the professor's class(es) in the past.	8.8%	14.9%	23.7%	12.0%
3d. The course will improve job/career opportunities.	16.5%	20.6%	24.3%	18.6%
3e. The course sounded interesting to me.	33.1%	36.4%	37.3%	34.7%

4. How would you rate the overall quality of instruction in this course?				
	Response by Course Level			
	Lower	Upper	Grad	Total
Excellent (6)	51.6%	58.4%	81.1%	55.6%
Very Good (5)	24.2%	21.8%	13.6%	22.8%
Good (4)	14.1%	11.5%	4.1%	12.6%
Fair (3)	6.6%	4.5%	1.2%	5.5%
Poor (2)	2.0%	2.0%	0.0%	2.0%
Unsatisfactory (1)	1.5%	1.6%	0.0%	1.5%
Mean	5.1	5.3	5.7	5.2
Median	6	6	6	6
Count	3566	3412	169	7147



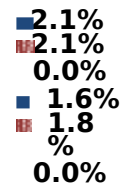
5. How would you rate your professor's specific contribution to you learning in this course?

	Response by Course Level			
	Lower	Upper	Grad	Total
Excellent (6)	55.7%	63.9%	81.1%	60.2%
Very Good (5)	22.3%	18.6%	11.8%	20.3%
Good (4)	12.2%	9.4%	6.5%	10.7%
Fair (3)	6.2%	4.2%	0.6%	5.1%
Poor (2)	2.1%	2.1%	0.0%	2.0%
Unsatisfactory (1)	1.6%	1.8%	0.0%	1.7%



1. Rate your interest in the subject matter of this course before you took the class.

2. How many class sessions did you attend?



Lower Upper Grad

1. Rate your interest in the subject matter of this course before you took the class.

	Response by Course Level			
	Lower	Upper	Grad	Total
Very High (1)	23.8%	31.1%	33.7%	30.5%
High (2)	20.8%	26.2%	23.9%	25.2%
Moderately High (3)	32.6%	26.8%	24.7%	27.3%
Moderately Low (4)	15.9%	10.7%	11.5%	11.4%
Low (5)	4.6%	3.3%	3.8%	3.5%
Very Low (6)	2.4%	2.0%	2.5%	2.1%
Mean	2.6	2.3	2.4	2.4
Median	3	2	2	2
Count	635	3693	611	4939

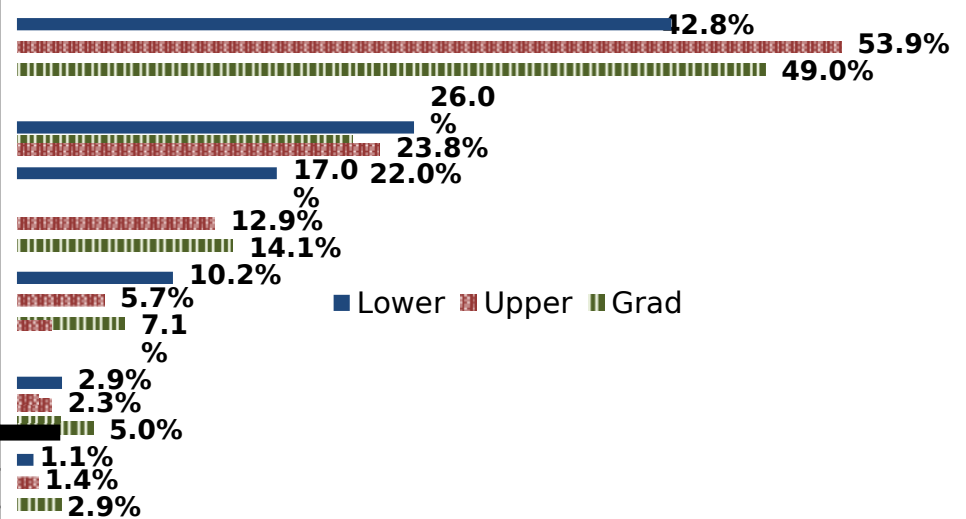
2. How many class sessions did you attend?

	Response by Course Level			
	Lower	Upper	Grad	Total
All (1)	58.3%	68.3%	85.2%	69.2%
Almost All (2)	26.3%	23.9%	12.1%	22.7%
More than Half (3)	8.1%	4.0%	1.2%	4.2%
Less than Half (4)	7.4%	3.8%	1.6%	4.0%
Mean	1.6	1.4	1.2	1.4
Median	1	1	1	1
Count	570	3345	581	4496

3. Why did you take this course? Choose all that apply.	Response by Course Level			
	Lower	Upper	Grad	Total
3a. The course fulfills a general education requirement.	48.5%	37.0%	31.0%	37.8%
3b. The course fulfills a requirement in my major.	74.3%	86.6%	86.8%	85.1%
3c. I have enjoyed the professor's class(es) in the past.	2.5%	9.5%	9.8%	8.6%
3d. The course will improve job/career opportunities.	24.6%	30.4%	31.1%	29.7%
3e. The course sounded interesting to me.	24.2%	22.8%	20.1%	22.6%

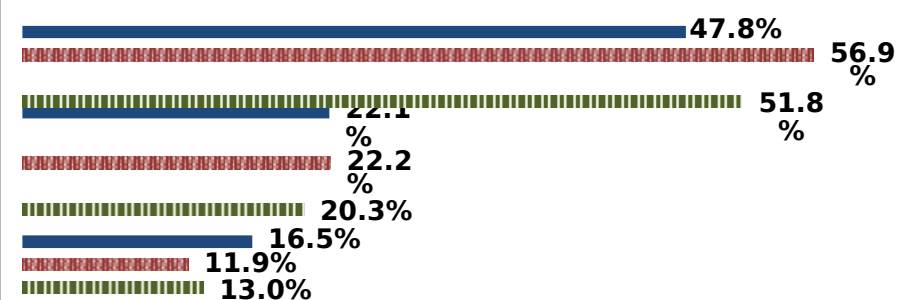
4. How would you rate the overall quality of instruction in this course?

	Response by Course Level			
	Lower	Upper	Grad	Total
Excellent (6)	42.8%	53.9%	49.0%	51.9%
Very Good (5)	26.0%	23.8%	22.0%	23.8%
Good (4)	17.0%	12.9%	14.1%	13.6%
Fair (3)	10.2%	5.7%	7.1%	6.5%
Poor (2)	2.9%	2.3%	5.0%	2.7%
Unsatisfactory (1)	1.1%	1.4%	2.9%	1.6%
Mean	4.9	5.2	4.9	5.1
Median	5	6	5	6
Count	647	3747	623	5017



5. How would you rate your professor's specific contribution to you learning in this course?

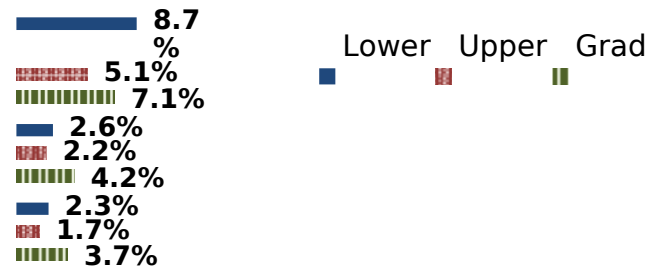
	Response by Course Level			
	Lower	Upper	Grad	Total
Excellent (6)	47.8%	56.9%	51.8%	55.1%
Very Good (5)	22.1%	22.2%	20.3%	22.0%
Good (4)	16.5%	11.9%	13.0%	12.7%
Fair (3)	8.7%	5.1%	7.1%	5.8%
Poor (2)	2.6%	2.2%	4.2%	2.5%



Student Opinion of Teaching Effectiveness (SOTE)- College of Business and Public Administration Spring 2021 Term Summary

1. Rate your interest in the subject matter of this course before you took the class.

2. How many class sessions did you attend?



Student Opinion of Teaching Effectiveness (SOTE)- College of Education Spring 2021 Term Summary

1. Rate your interest in the subject matter of this course before you took the class.

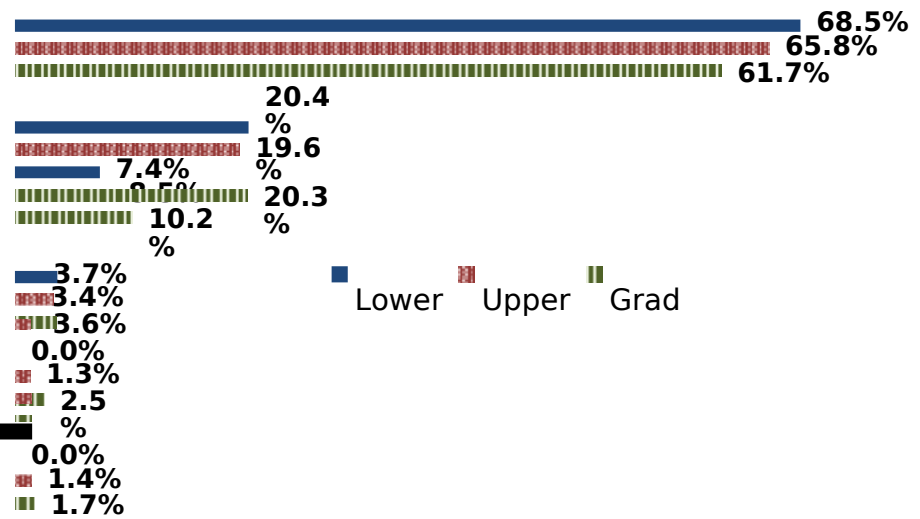
	Response by Course Level			
	Lower	Upper	Grad	Total
Very High (1)	49.0%	40.6%	49.1%	46.4%
High (2)	25.5%	28.4%	26.3%	26.9%
Moderately High (3)	25.5%	21.6%	17.0%	18.6%
Moderately Low (4)	0.0%	6.5%	5.0%	5.4%
Low (5)	0.0%	2.1%	1.7%	1.8%
Very Low (6)	0.0%	0.8%	1.0%	0.9%
Mean	1.8	2.0	1.9	1.9
Median	2	2	2	2
Count	51	751	1550	2352

2. How many class sessions did you attend?

	Response by Course Level			
	Lower	Upper	Grad	Total
All (1)	73.3%	80.3%	86.1%	84.0%
Almost All (2)	26.7%	17.9%	12.5%	14.6%
More than Half (3)	0.0%	1.0%	0.8%	0.8%
Less than Half (4)	0.0%	0.9%	0.6%	0.6%
Mean	1.3	1.2	1.2	1.2
Median	1	1	1	1
Count	45	704	1427	2176

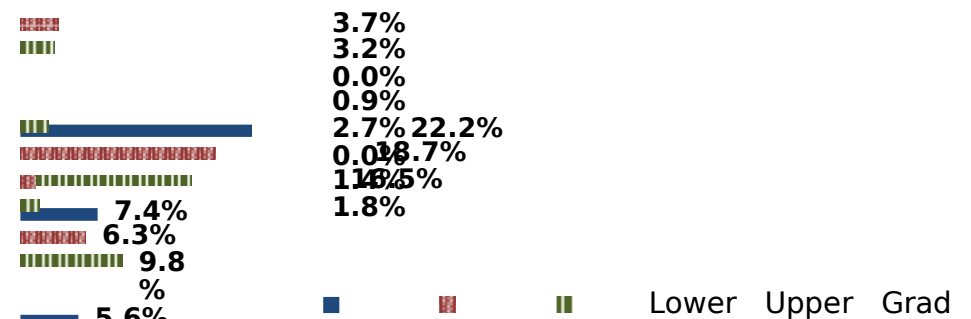
3. Why did you take this course? Choose all that apply.	Response by Course Level			
	Lower	Upper	Grad	Total
3a. The course fulfills a general education requirement.	57.4%	32.3%	23.4%	27.0%
3b. The course fulfills a requirement in my major.	68.5%	84.1%	86.1%	85.1%
3c. I have enjoyed the professor's class(es) in the past.	1.9%	5.9%	18.2%	13.9%
3d. The course will improve job/career opportunities.	18.5%	35.4%	40.5%	38.4%
3e. The course sounded interesting to me.	31.5%	13.5%	17.1%	16.2%

4. How would you rate the overall quality of instruction in this course?				
	Response by Course Level			
	Lower	Upper	Grad	Total
Excellent (6)	68.5%	65.8%	61.7%	63.1%
Very Good (5)	20.4%	19.6%	20.3%	20.0%
Good (4)	7.4%	8.5%	10.2%	9.6%
Fair (3)	3.7%	3.4%	3.6%	3.6%
Poor (2)	0.0%	1.3%	2.5%	2.1%
Unsatisfactory (1)	0.0%	1.4%	1.7%	1.6%
Mean	5.5	5.4	5.3	5.3
Median	6	6	6	6
Count	54	766	1575	2395



5. How would you rate your professor's specific contribution to your learning in this course?

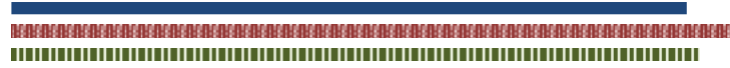
	Response by Course Level			
	Lower	Upper	Grad	Total
Excellent (6)	64.8%	69.0%	66.0%	66.9%
Very Good (5)	22.2%	18.7%	16.5%	17.3%
Good (4)	7.4%	6.3%	9.8%	8.6%
Fair (3)	5.6%	3.7%	3.2%	3.4%
Poor (2)	0.0%	0.9%	2.7%	2.1%



1. Rate your interest in the subject matter of this course before you took the class.

64.8%
69.0%
66.0%

2. How many class sessions did you attend?



Student Opinion of Teaching Effectiveness (SOTE)- College of Natural Sciences Spring 2021 Term Summary

1. Rate your interest in the subject matter of this course before you took the class.

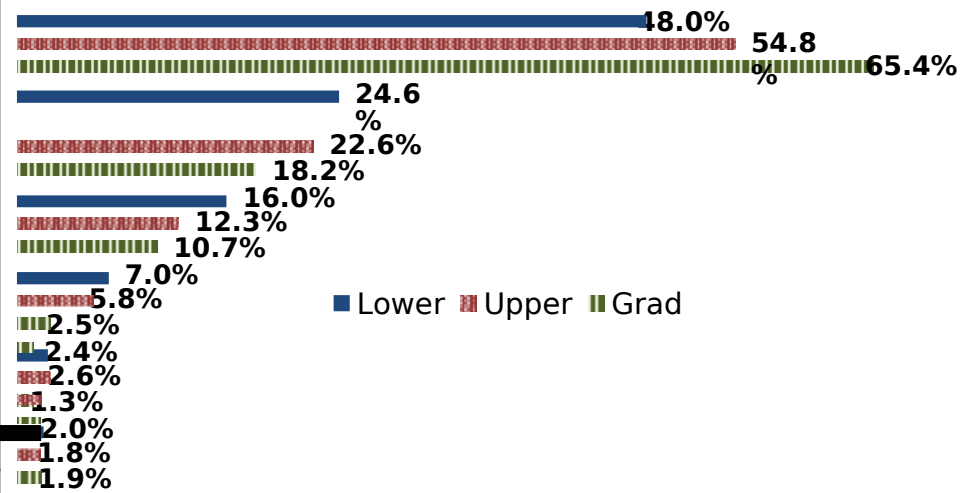
	Response by Course Level			
	Lower	Upper	Grad	Total
Very High (1)	22.7%	32.8%	47.4%	27.6%
High (2)	23.4%	26.7%	26.0%	24.9%
Moderately High (3)	29.0%	25.9%	19.5%	27.5%
Moderately Low (4)	16.2%	9.4%	5.2%	13.0%
Low (5)	5.2%	3.3%	2.0%	4.3%
Very Low (6)	3.6%	1.9%	0.0%	2.8%
Mean	2.7	2.3	1.9	2.5
Median	3	2	2	2
Count	5302	4432	154	9888

2. How many class sessions did you attend?

	Response by Course Level			
	Lower	Upper	Grad	Total
All (1)	62.8%	71.2%	88.6%	67.0%
Almost All (2)	27.7%	22.9%	10.7%	25.3%
More than Half (3)	5.4%	3.8%	0.7%	4.6%
Less than Half (4)	4.1%	2.2%	0.0%	3.2%
Mean	1.5	1.4	1.1	1.4
Median	1	1	1	1
Count	4799	4007	149	8955

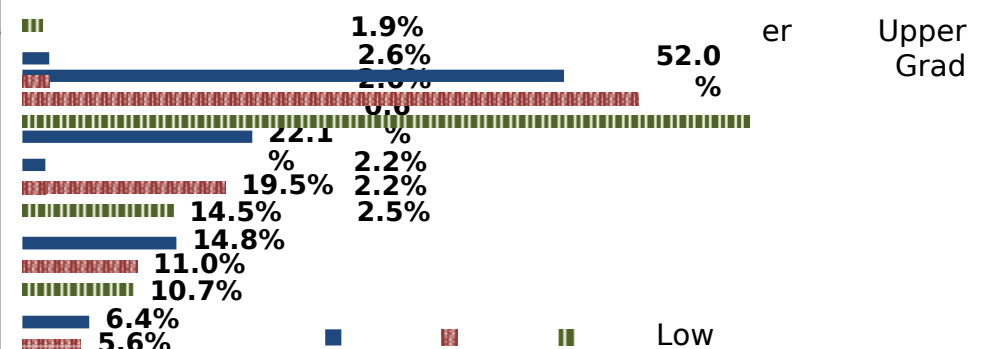
3. Why did you take this course? Choose all that apply.	Response by Course Level			
	Lower	Upper	Grad	Total
3a. The course fulfills a general education requirement.	58.7%	33.7%	31.5%	47.0%
3b. The course fulfills a requirement in my major.	66.2%	82.2%	91.2%	73.8%
3c. I have enjoyed the professor's class(es) in the past.	6.6%	13.4%	25.2%	10.0%
3d. The course will improve job/career opportunities.	16.7%	22.2%	37.7%	19.5%
3e. The course sounded interesting to me.	16.6%	22.5%	27.0%	19.4%

4. How would you rate the overall quality of instruction in this course?	Response by Course Level			
	Lower	Upper	Grad	Total
Excellent (6)	48.0%	54.8%	65.4%	51.4%
Very Good (5)	24.6%	22.6%	18.2%	23.6%
Good (4)	16.0%	12.3%	10.7%	14.3%
Fair (3)	7.0%	5.8%	2.5%	6.4%
Poor (2)	2.4%	2.6%	1.3%	2.5%
Unsatisfactory (1)	2.0%	1.8%	1.9%	1.9%
Mean	5.0	5.2	5.4	5.1
Median	5	6	6	6
Count	5393	4515	159	10067



5. How would you rate your professor's specific contribution to your learning in this course?

	Response by Course Level			
	Lower	Upper	Grad	Total
Excellent (6)	52.0%	59.1%	69.8%	55.5%
Very Good (5)	22.1%	19.5%	14.5%	20.8%
Good (4)	14.8%	11.0%	10.7%	13.0%
Fair (3)	6.4%	5.6%	1.9%	6.0%
Natural Poor (2)	2.6%	2.6%	0.6%	2.5%
Unsatisfactory (1)	2.2%	2.2%	2.5%	2.2%



1. Rate your interest in the subject matter of this course before you took the class.

59.1%

2. How many class sessions did you attend?

69.8%

Student Opinion of Teaching Effectiveness (SOTE)- College of Social and Behavioral Sciences Spring 2021 Term Summary

1. Rate your interest in the subject matter of this course before you took the class.

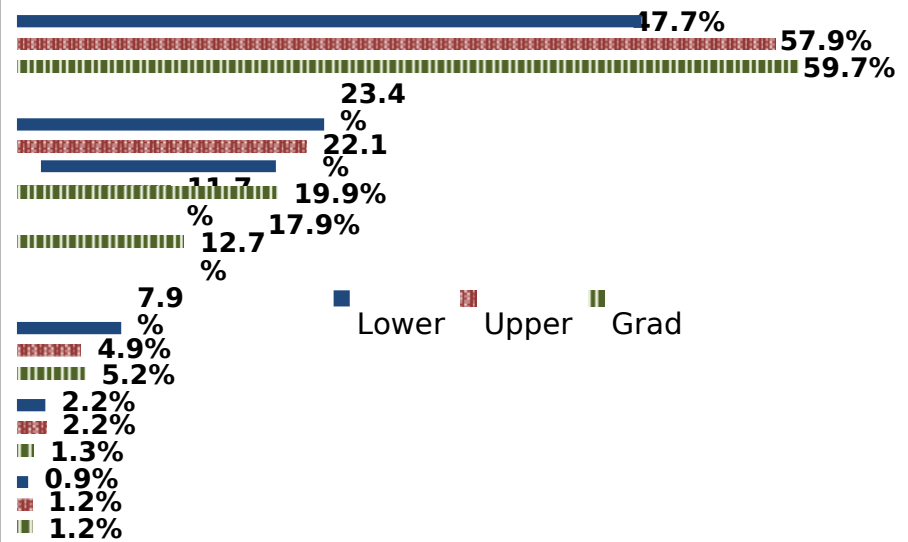
	Response by Course Level			
	Lower	Upper	Grad	Total
Very High (1)	23.1%	35.8%	39.1%	32.1%
High (2)	23.0%	25.6%	29.5%	25.1%
Moderately High (3)	29.2%	23.5%	19.6%	24.9%
Moderately Low (4)	15.9%	9.6%	7.8%	11.4%
Low (5)	5.0%	3.2%	3.2%	3.8%
Very Low (6)	3.9%	2.3%	0.9%	2.7%
Mean	2.7	2.3	2.1	2.4
Median	3	2	2	2
Count	2483	4553	757	7793

2. How many class sessions did you attend?

	Response by Course Level			
	Lower	Upper	Grad	Total
All (1)	68.0%	69.3%	80.4%	70.1%
Almost All (2)	20.4%	23.0%	18.2%	21.7%
More than Half (3)	5.2%	4.0%	1.1%	4.1%
Less than Half (4)	6.3%	3.7%	0.3%	4.2%
Mean	1.5	1.4	1.2	1.4
Median	1	1	1	1
Count	2194	4116	715	7025

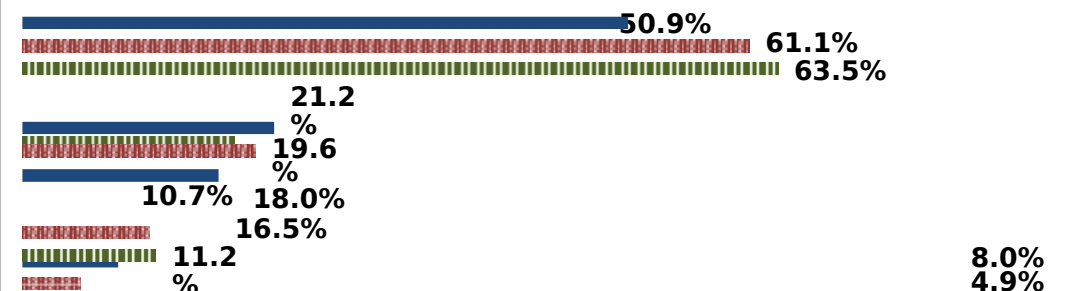
3. Why did you take this course? Choose all that apply.	Response by Course Level			
	Lower	Upper	Grad	Total
3a. The course fulfills a general education requirement.	69.2%	41.7%	24.8%	48.9%
3b. The course fulfills a requirement in my major.	48.7%	75.2%	91.4%	68.3%
3c. I have enjoyed the professor's class(es) in the past.	3.7%	13.6%	21.2%	11.2%
3d. The course will improve job/career opportunities.	15.6%	21.2%	30.4%	20.3%
3e. The course sounded interesting to me.	26.2%	36.1%	19.6%	31.4%

4. How would you rate the overall quality of instruction in this course?	Response by Course Level			
	Lower	Upper	Grad	Total
Excellent (6)	47.7%	57.9%	59.7%	54.8%
Very Good (5)	23.4%	22.1%	19.9%	22.3%
Good (4)	17.9%	11.7%	12.7%	13.8%
Fair (3)	7.9%	4.9%	5.2%	5.9%
Poor (2)	2.2%	2.2%	1.3%	2.1%
Unsatisfactory (1)	0.9%	1.2%	1.2%	1.1%
Mean	5.0	5.3	5.3	5.2
Median	5	6	6	6
Count	2530	4642	769	7941



5. How would you rate your professor's specific contribution to you learning in this course?

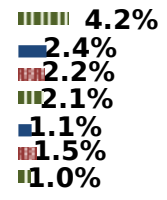
	Response by Course Level			
	Lower	Upper	Grad	Total
Excellent (6)	50.9%	61.1%	63.5%	58.1%
Very Good (5)	21.2%	19.6%	18.0%	19.9%
Good (4)	16.5%	10.7%	11.2%	12.6%
Fair (3)	8.0%	4.9%	4.2%	5.8%
Poor (2)	2.4%	2.2%	2.1%	2.3%



Unsatisfactory (1) 1.1% 1.5% 1.0% 1.5%

1. Rate your interest in the subject matter of this course before you took the class.

2. How many class sessions did you attend?



Lower Upper Grad

Student Opinion of Teaching Effectiveness (SOTE)- College of University Studies Spring 2021 Term Summary

1. Rate your interest in the subject matter of this course before you took the class.

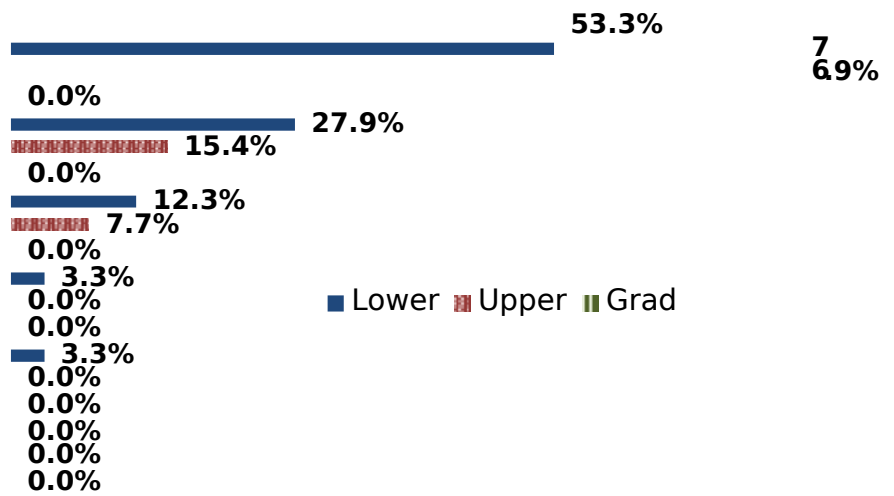
	Response by Course Level			
	Lower	Upper	Grad	Total
Very High (1)	17.1%	25.0%	0.0%	17.8%
High (2)	10.3%	41.7%	0.0%	13.2%
Moderately High (3)	37.6%	16.7%	0.0%	35.7%
Moderately Low (4)	14.5%	8.3%	0.0%	14.0%
Low (5)	14.5%	0.0%	0.0%	13.2%
Very Low (6)	6.0%	8.3%	0.0%	6.2%
Mean	3.2	2.4	.	3.1
Median	3	2	.	3
Count	117	12	0	129

2. How many class sessions did you attend?

	Response by Course Level			
	Lower	Upper	Grad	Total
All (1)	76.6%	90.0%	0.0%	77.8%
Almost All (2)	15.0%	10.0%	0.0%	14.5%
More than Half (3)	3.7%	0.0%	0.0%	3.4%
Less than Half (4)	4.7%	0.0%	0.0%	4.3%
Mean	1.4	1.1	.	1.3
Median	1	1	.	1
Count	107	10	0	117

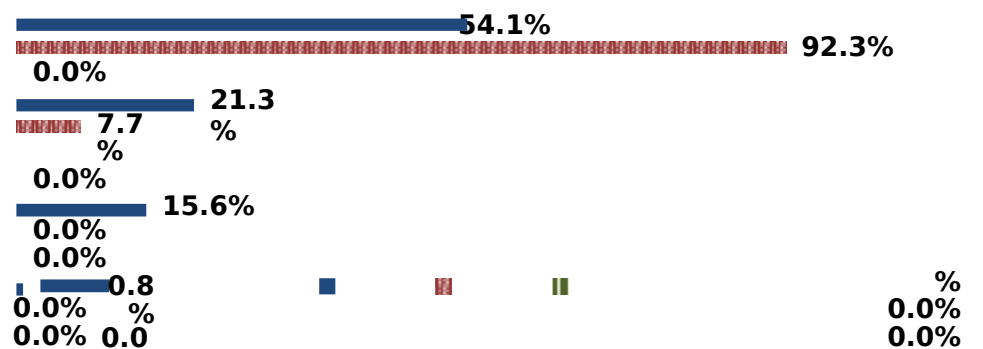
3. Why did you take this course? Choose all that apply.	Response by Course Level			
	Lower	Upper	Grad	Total
3a. The course fulfills a general education requirement.	88.5%	38.5%	0.0%	83.7%
3b. The course fulfills a requirement in my major.	21.3%	23.1%	0.0%	21.5%
3c. I have enjoyed the professor's class(es) in the past.	9.8%	55.9%	0.0%	14.1%
3d. The course will improve job/career opportunities.	12.3%	38.5%	0.0%	14.8%
3e. The course sounded interesting to me.	23.8%	7.7%	0.0%	22.2%

4. How would you rate the overall quality of instruction in this course?				
	Response by Course Level			
	Lower	Upper	Grad	Total
Excellent (6)	53.3%	76.9%	0.0%	55.6%
Very Good (5)	27.9%	15.4%	0.0%	26.7%
Good (4)	12.3%	7.7%	0.0%	11.9%
Fair (3)	3.3%	0.0%	0.0%	3.0%
Poor (2)	3.3%	0.0%	0.0%	3.0%
Unsatisfactory (1)	0.0%	0.0%	0.0%	0.0%
Mean	5.2	5.7	.	5.3
Median	6	6	.	6
Count	122	13	0	135



5. How would you rate your professor's specific contribution to you learning in this course?

	Response by Course Level			
	Lower	Upper	Grad	Total
Excellent (6)	54.1%	92.3%	0.0%	57.8%
Very Good (5)	21.3%	7.7%	0.0%	20.0%
Good (4)	15.6%	0.0%	0.0%	14.1%
Fair (3)	8.2%	0.0%	0.0%	7.4%
Poor (2)	0.8%	0.0%	0.0%	0.7%
Unsatisfactory (1)	0.0%	0.0%	0.0%	0.0%



1. Rate your interest in the subject matter of this course before you took the class.

2. How many class sessions did you attend?

0.0% 8.2
0.0% %

Lower Upper Grad