

Student Opinion of Teaching Effectiveness (SOTE)- College of Arts & Letters Spring 2020 Term Summary

1. Rate your interest in the subject matter of this course before you took the class.

| | Response by Course Level | | | |
|---------------------|--------------------------|-------|-------|-------|
| | Lower | Upper | Grad | Total |
| Very High (1) | 21.7% | 34.7% | 40.0% | 28.6% |
| High (2) | 18.9% | 24.9% | 20.0% | 22.0% |
| Moderately High (3) | 31.0% | 23.7% | 22.5% | 27.1% |
| Moderately Low (4) | 17.7% | 10.7% | 12.5% | 14.0% |
| Low (5) | 6.4% | 3.5% | 0.0% | 4.8% |
| Very Low (6) | 4.3% | 2.6% | 5.0% | 3.4% |
| Mean | 2.8 | 2.3 | 2.3 | 2.5 |
| Median | 3 | 2 | 2 | 2 |
| Count | 2126 | 2349 | 40 | 4515 |

2. How many class sessions did you attend?

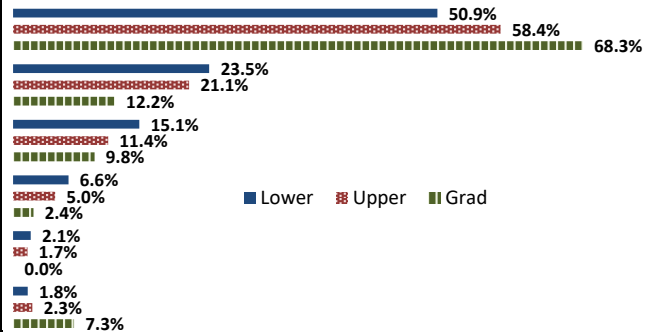
| | Response by Course Level | | | |
|--------------------|--------------------------|-------|-------|-------|
| | Lower | Upper | Grad | Total |
| All (1) | 77.9% | 77.7% | 75.7% | 77.8% |
| Almost All (2) | 18.3% | 18.7% | 24.3% | 18.6% |
| More than Half (3) | 2.6% | 1.8% | 0.0% | 2.2% |
| Less than Half (4) | 1.2% | 1.8% | 0.0% | 1.5% |
| Mean | 1.3 | 1.3 | 1.2 | 1.3 |
| Median | 1 | 1 | 1 | 1 |
| Count | 1948 | 2152 | 37 | 4137 |

3. Why did you take this course? Choose all that apply.

| | Response by Course Level | | | |
|---|--------------------------|-------|-------|-------|
| | Lower | Upper | Grad | Total |
| 3a. The course fulfills a general education requirement. | 77.1% | 41.5% | 12.2% | 57.9% |
| 3b. The course fulfills a requirement in my major. | 25.0% | 69.3% | 82.9% | 48.7% |
| 3c. I have enjoyed the professor's class(es) in the past. | 8.0% | 16.8% | 39.0% | 12.9% |
| 3d. The course will improve job/career opportunities. | 12.1% | 18.7% | 24.4% | 15.7% |
| 3e. The course sounded interesting to me. | 27.3% | 31.3% | 46.3% | 29.6% |

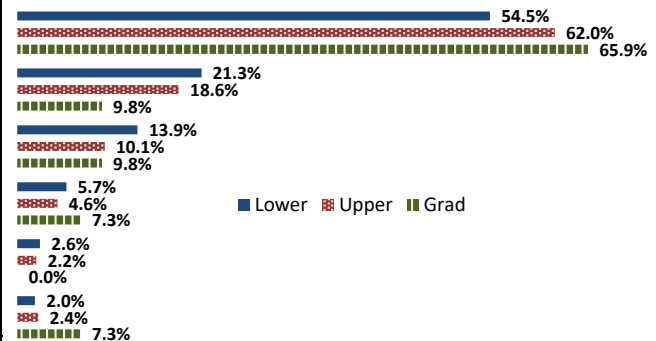
4. How would you rate the overall quality of instruction in this course?

| | Response by Course Level | | | |
|--------------------|--------------------------|-------|-------|-------|
| | Lower | Upper | Grad | Total |
| Excellent (6) | 50.9% | 58.4% | 68.3% | 55.0% |
| Very Good (5) | 23.5% | 21.1% | 12.2% | 22.2% |
| Good (4) | 15.1% | 11.4% | 9.8% | 13.1% |
| Fair (3) | 6.6% | 5.0% | 2.4% | 5.8% |
| Poor (2) | 2.1% | 1.7% | 0.0% | 1.9% |
| Unsatisfactory (1) | 1.8% | 2.3% | 7.3% | 2.1% |
| Mean | 5.1 | 5.2 | 5.2 | 5.2 |
| Median | 6 | 6 | 6 | 6 |
| Count | 2169 | 2423 | 41 | 4633 |



5. How would you rate your professor's specific contribution to you learning in this course?

| | Response by Course Level | | | |
|--------------------|--------------------------|-------|-------|-------|
| | Lower | Upper | Grad | Total |
| Excellent (6) | 54.5% | 62.0% | 65.9% | 58.5% |
| Very Good (5) | 21.3% | 18.6% | 9.8% | 19.8% |
| Good (4) | 13.9% | 10.1% | 9.8% | 11.9% |
| Fair (3) | 5.7% | 4.6% | 7.3% | 5.1% |
| Poor (2) | 2.6% | 2.2% | 0.0% | 2.4% |
| Unsatisfactory (1) | 2.0% | 2.4% | 7.3% | 2.3% |
| Mean | 5.1 | 5.3 | 5.1 | 5.2 |
| Median | 6 | 6 | 6 | 6 |
| Count | 2169 | 2419 | 41 | 4629 |



Student Opinion of Teaching Effectiveness (SOTE)- College of Business and Public Administration Spring 2020 Term Summary

1. Rate your interest in the subject matter of this course before you took the class.

| | Response by Course Level | | | |
|---------------------|--------------------------|-------|-------|-------|
| | Lower | Upper | Grad | Total |
| Very High (1) | 26.4% | 33.9% | 37.2% | 33.2% |
| High (2) | 27.5% | 25.1% | 23.4% | 25.3% |
| Moderately High (3) | 26.4% | 24.5% | 23.2% | 24.6% |
| Moderately Low (4) | 11.9% | 10.5% | 9.7% | 10.6% |
| Low (5) | 4.8% | 3.8% | 3.0% | 3.9% |
| Very Low (6) | 3.0% | 2.2% | 3.5% | 2.5% |
| Mean | 2.5 | 2.3 | 2.3 | 2.3 |
| Median | 2 | 2 | 2 | 2 |
| Count | 640 | 2784 | 538 | 3962 |

2. How many class sessions did you attend?

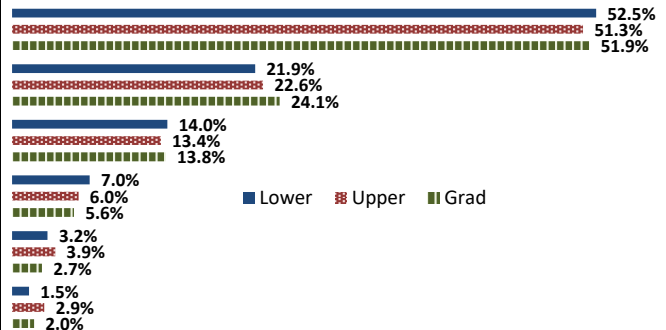
| | Response by Course Level | | | |
|--------------------|--------------------------|-------|-------|-------|
| | Lower | Upper | Grad | Total |
| All (1) | 66.9% | 76.6% | 85.3% | 76.3% |
| Almost All (2) | 24.7% | 19.4% | 11.4% | 19.1% |
| More than Half (3) | 5.6% | 2.0% | 1.4% | 2.5% |
| Less than Half (4) | 2.9% | 2.0% | 2.0% | 2.1% |
| Mean | 1.4 | 1.3 | 1.2 | 1.3 |
| Median | 1 | 1 | 1 | 1 |
| Count | 595 | 2569 | 509 | 3673 |

3. Why did you take this course? Choose all that apply.

| | Response by Course Level | | | |
|---|--------------------------|-------|-------|-------|
| | Lower | Upper | Grad | Total |
| 3a. The course fulfills a general education requirement. | 44.2% | 30.0% | 34.8% | 32.9% |
| 3b. The course fulfills a requirement in my major. | 63.8% | 86.3% | 83.8% | 82.3% |
| 3c. I have enjoyed the professor's class(es) in the past. | 5.5% | 9.0% | 9.9% | 8.5% |
| 3d. The course will improve job/career opportunities. | 26.5% | 28.5% | 32.0% | 28.7% |
| 3e. The course sounded interesting to me. | 23.3% | 18.6% | 20.1% | 19.6% |

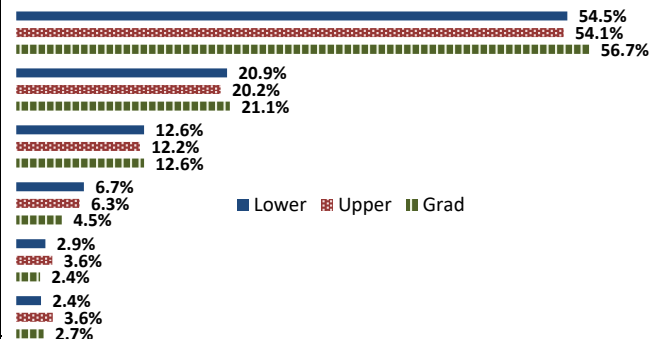
4. How would you rate the overall quality of instruction in this course?

| | Response by Course Level | | | |
|--------------------|--------------------------|-------|-------|-------|
| | Lower | Upper | Grad | Total |
| Excellent (6) | 52.5% | 51.3% | 51.9% | 51.6% |
| Very Good (5) | 21.9% | 22.6% | 24.1% | 22.7% |
| Good (4) | 14.0% | 13.4% | 13.8% | 13.5% |
| Fair (3) | 7.0% | 6.0% | 5.6% | 6.1% |
| Poor (2) | 3.2% | 3.9% | 2.7% | 3.6% |
| Unsatisfactory (1) | 1.5% | 2.9% | 2.0% | 2.6% |
| Mean | 5.1 | 5.0 | 5.1 | 5.0 |
| Median | 6 | 6 | 6 | 6 |
| Count | 659 | 2864 | 557 | 4080 |



5. How would you rate your professor's specific contribution to you learning in this course?

| | Response by Course Level | | | |
|--------------------|--------------------------|-------|-------|-------|
| | Lower | Upper | Grad | Total |
| Excellent (6) | 54.5% | 54.1% | 56.7% | 54.5% |
| Very Good (5) | 20.9% | 20.2% | 21.1% | 20.4% |
| Good (4) | 12.6% | 12.2% | 12.6% | 12.4% |
| Fair (3) | 6.7% | 6.3% | 4.5% | 6.1% |
| Poor (2) | 2.9% | 3.6% | 2.4% | 3.3% |
| Unsatisfactory (1) | 2.4% | 3.6% | 2.7% | 3.3% |
| Mean | 5.1 | 5.0 | 5.2 | 5.1 |
| Median | 6 | 6 | 6 | 6 |
| Count | 657 | 2861 | 554 | 4072 |



Student Opinion of Teaching Effectiveness (SOTE)- College of Education Spring 2020 Term Summary

1. Rate your interest in the subject matter of this course before you took the class.

| | Response by Course Level | | | |
|---------------------|--------------------------|-------|-------|-------|
| | Lower | Upper | Grad | Total |
| Very High (1) | 58.5% | 34.4% | 51.0% | 45.5% |
| High (2) | 9.8% | 24.5% | 26.0% | 25.0% |
| Moderately High (3) | 26.8% | 28.7% | 17.2% | 21.5% |
| Moderately Low (4) | 2.4% | 8.7% | 4.6% | 6.0% |
| Low (5) | 2.4% | 2.5% | 0.8% | 1.4% |
| Very Low (6) | 0.0% | 1.2% | 0.5% | 0.7% |
| Mean | 1.8 | 2.2 | 1.8 | 2.0 |
| Median | 1 | 2 | 1 | 2 |
| Count | 41 | 436 | 781 | 1258 |

2. How many class sessions did you attend?

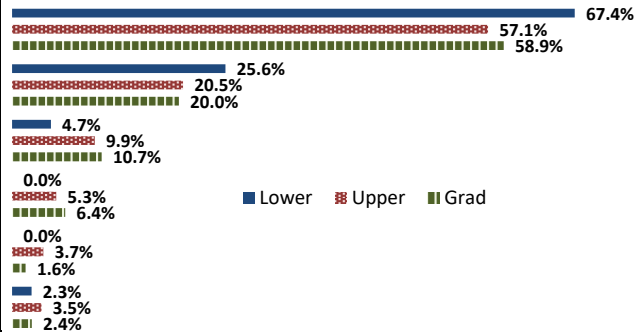
| | Response by Course Level | | | |
|--------------------|--------------------------|-------|-------|-------|
| | Lower | Upper | Grad | Total |
| All (1) | 76.3% | 90.9% | 91.5% | 90.8% |
| Almost All (2) | 23.7% | 8.1% | 7.6% | 8.3% |
| More than Half (3) | 0.0% | 0.5% | 0.5% | 0.5% |
| Less than Half (4) | 0.0% | 0.5% | 0.4% | 0.4% |
| Mean | 1.2 | 1.1 | 1.1 | 1.1 |
| Median | 1 | 1 | 1 | 1 |
| Count | 38 | 408 | 742 | 1188 |

3. Why did you take this course? Choose all that apply.

| | Response by Course Level | | | |
|---|--------------------------|-------|-------|-------|
| | Lower | Upper | Grad | Total |
| 3a. The course fulfills a general education requirement. | 34.9% | 29.0% | 22.1% | 24.9% |
| 3b. The course fulfills a requirement in my major. | 72.1% | 74.1% | 86.3% | 81.5% |
| 3c. I have enjoyed the professor's class(es) in the past. | 9.3% | 9.9% | 25.1% | 19.3% |
| 3d. The course will improve job/career opportunities. | 20.9% | 34.3% | 35.3% | 34.5% |
| 3e. The course sounded interesting to me. | 27.9% | 14.3% | 15.7% | 15.6% |

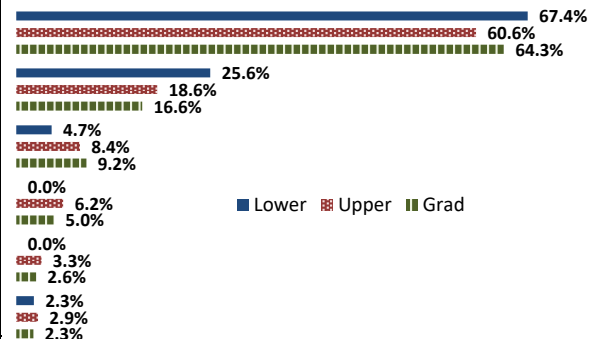
4. How would you rate the overall quality of instruction in this course?

| | Response by Course Level | | | |
|--------------------|--------------------------|-------|-------|-------|
| | Lower | Upper | Grad | Total |
| Excellent (6) | 67.4% | 57.1% | 58.9% | 58.6% |
| Very Good (5) | 25.6% | 20.5% | 20.0% | 20.3% |
| Good (4) | 4.7% | 9.9% | 10.7% | 10.3% |
| Fair (3) | 0.0% | 5.3% | 6.4% | 5.8% |
| Poor (2) | 0.0% | 3.7% | 1.6% | 2.3% |
| Unsatisfactory (1) | 2.3% | 3.5% | 2.4% | 2.8% |
| Mean | 5.5 | 5.1 | 5.2 | 5.2 |
| Median | 6 | 6 | 6 | 6 |
| Count | 43 | 454 | 801 | 1298 |



5. How would you rate your professor's specific contribution to you learning in this course?

| | Response by Course Level | | | |
|--------------------|--------------------------|-------|-------|-------|
| | Lower | Upper | Grad | Total |
| Excellent (6) | 67.4% | 60.6% | 64.3% | 63.1% |
| Very Good (5) | 25.6% | 18.6% | 16.6% | 17.6% |
| Good (4) | 4.7% | 8.4% | 9.2% | 8.8% |
| Fair (3) | 0.0% | 6.2% | 5.0% | 5.3% |
| Poor (2) | 0.0% | 3.3% | 2.6% | 2.8% |
| Unsatisfactory (1) | 2.3% | 2.9% | 2.3% | 2.5% |
| Mean | 5.5 | 5.2 | 5.3 | 5.3 |
| Median | 6 | 6 | 6 | 6 |
| Count | 43 | 452 | 801 | 1296 |



Student Opinion of Teaching Effectiveness (SOTE)- College of Natural Sciences Spring 2020 Term Summary

1. Rate your interest in the subject matter of this course before you took the class.

| | Response by Course Level | | | |
|---------------------|--------------------------|-------|-------|-------|
| | Lower | Upper | Grad | Total |
| Very High (1) | 22.7% | 32.6% | 43.2% | 28.6% |
| High (2) | 21.6% | 24.1% | 29.1% | 23.2% |
| Moderately High (3) | 30.5% | 25.3% | 23.0% | 27.5% |
| Moderately Low (4) | 15.2% | 11.2% | 2.7% | 12.7% |
| Low (5) | 5.1% | 3.8% | 2.0% | 4.3% |
| Very Low (6) | 4.9% | 3.1% | 0.0% | 3.8% |
| Mean | 2.7 | 2.4 | 1.9 | 2.5 |
| Median | 3 | 2 | 2 | 2 |
| Count | 2980 | 3979 | 148 | 7107 |

2. How many class sessions did you attend?

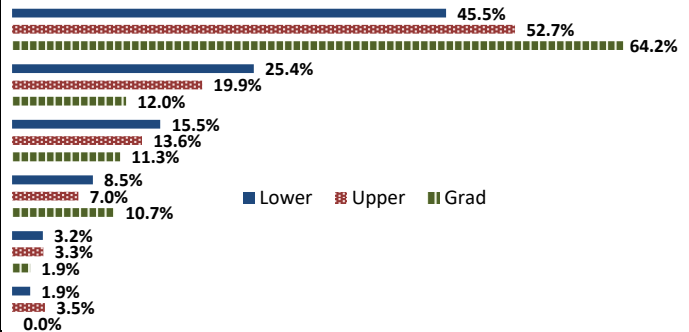
| | Response by Course Level | | | |
|--------------------|--------------------------|-------|-------|-------|
| | Lower | Upper | Grad | Total |
| All (1) | 72.4% | 80.8% | 92.3% | 77.5% |
| Almost All (2) | 20.4% | 15.9% | 4.2% | 17.5% |
| More than Half (3) | 3.9% | 1.9% | 2.1% | 2.8% |
| Less than Half (4) | 3.4% | 1.4% | 1.4% | 2.2% |
| Mean | 1.4 | 1.2 | 1.1 | 1.3 |
| Median | 1 | 1 | 1 | 1 |
| Count | 2757 | 3649 | 142 | 6548 |

3. Why did you take this course? Choose all that apply.

| | Response by Course Level | | | |
|---|--------------------------|-------|-------|-------|
| | Lower | Upper | Grad | Total |
| 3a. The course fulfills a general education requirement. | 57.7% | 30.7% | 20.8% | 41.8% |
| 3b. The course fulfills a requirement in my major. | 57.9% | 77.5% | 87.4% | 69.5% |
| 3c. I have enjoyed the professor's class(es) in the past. | 7.5% | 12.7% | 28.3% | 10.9% |
| 3d. The course will improve job/career opportunities. | 13.3% | 18.7% | 25.2% | 16.6% |
| 3e. The course sounded interesting to me. | 14.2% | 18.6% | 26.4% | 16.9% |

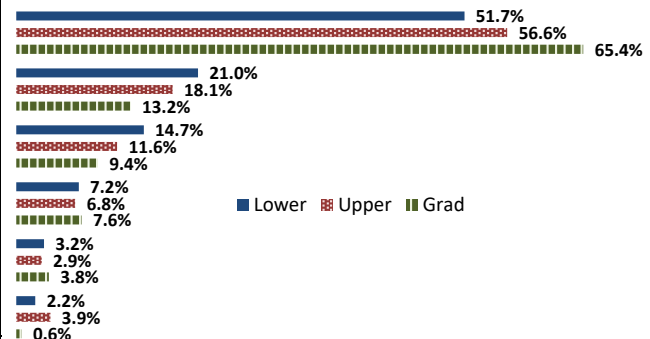
4. How would you rate the overall quality of instruction in this course?

| | Response by Course Level | | | |
|--------------------|--------------------------|-------|-------|-------|
| | Lower | Upper | Grad | Total |
| Excellent (6) | 45.5% | 52.7% | 64.2% | 50.0% |
| Very Good (5) | 25.4% | 19.9% | 12.0% | 22.0% |
| Good (4) | 15.5% | 13.6% | 11.3% | 14.4% |
| Fair (3) | 8.5% | 7.0% | 10.7% | 7.7% |
| Poor (2) | 3.2% | 3.3% | 1.9% | 3.2% |
| Unsatisfactory (1) | 1.9% | 3.5% | 0.0% | 2.7% |
| Mean | 5.0 | 5.0 | 5.3 | 5.0 |
| Median | 5 | 6 | 6 | 5 |
| Count | 3069 | 4082 | 159 | 7310 |



5. How would you rate your professor's specific contribution to your learning in this course?

| | Response by Course Level | | | |
|--------------------|--------------------------|-------|-------|-------|
| | Lower | Upper | Grad | Total |
| Excellent (6) | 51.7% | 56.6% | 65.4% | 54.8% |
| Very Good (5) | 21.0% | 18.1% | 13.2% | 19.2% |
| Good (4) | 14.7% | 11.6% | 9.4% | 12.9% |
| Fair (3) | 7.2% | 6.8% | 7.6% | 7.0% |
| Poor (2) | 3.2% | 2.9% | 3.8% | 3.1% |
| Unsatisfactory (1) | 2.2% | 3.9% | 0.6% | 3.1% |
| Mean | 5.0 | 5.1 | 5.3 | 5.1 |
| Median | 5 | 6 | 6 | 6 |
| Count | 3065 | 4089 | 159 | 7313 |



Student Opinion of Teaching Effectiveness (SOTE)- College of Social and Behavioral Sciences Spring 2020 Term Summary

1. Rate your interest in the subject matter of this course before you took the class.

| | Response by Course Level | | | |
|---------------------|--------------------------|-------|-------|-------|
| | Lower | Upper | Grad | Total |
| Very High (1) | 17.4% | 33.9% | 38.8% | 28.9% |
| High (2) | 20.7% | 24.3% | 27.9% | 23.4% |
| Moderately High (3) | 32.0% | 25.1% | 20.0% | 27.0% |
| Moderately Low (4) | 18.0% | 11.0% | 7.6% | 13.0% |
| Low (5) | 6.4% | 3.4% | 3.6% | 4.4% |
| Very Low (6) | 5.5% | 2.3% | 2.1% | 3.4% |
| Mean | 2.9 | 2.3 | 2.2 | 2.5 |
| Median | 3 | 2 | 2 | 2 |
| Count | 2367 | 4650 | 420 | 7437 |

2. How many class sessions did you attend?

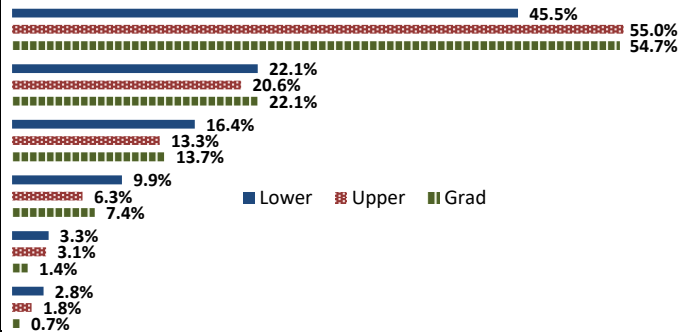
| | Response by Course Level | | | |
|--------------------|--------------------------|-------|-------|-------|
| | Lower | Upper | Grad | Total |
| All (1) | 78.1% | 77.7% | 90.7% | 78.6% |
| Almost All (2) | 15.3% | 16.5% | 9.1% | 15.7% |
| More than Half (3) | 3.4% | 2.6% | 0.3% | 2.7% |
| Less than Half (4) | 3.2% | 3.2% | 0.0% | 3.0% |
| Mean | 1.3 | 1.3 | 1.1 | 1.3 |
| Median | 1 | 1 | 1 | 1 |
| Count | 2178 | 4296 | 397 | 6871 |

3. Why did you take this course? Choose all that apply.

| | Response by Course Level | | | |
|---|--------------------------|-------|-------|-------|
| | Lower | Upper | Grad | Total |
| 3a. The course fulfills a general education requirement. | 76.5% | 36.1% | 27.4% | 48.5% |
| 3b. The course fulfills a requirement in my major. | 33.4% | 74.8% | 83.5% | 62.0% |
| 3c. I have enjoyed the professor's class(es) in the past. | 3.3% | 15.0% | 22.6% | 11.7% |
| 3d. The course will improve job/career opportunities. | 8.4% | 20.2% | 33.3% | 17.1% |
| 3e. The course sounded interesting to me. | 18.5% | 36.1% | 19.3% | 29.6% |

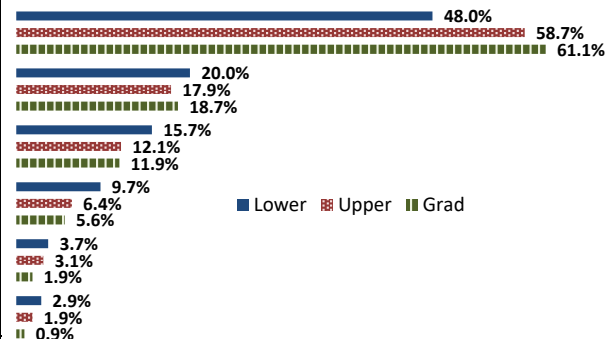
4. How would you rate the overall quality of instruction in this course?

| | Response by Course Level | | | |
|--------------------|--------------------------|-------|-------|-------|
| | Lower | Upper | Grad | Total |
| Excellent (6) | 45.5% | 55.0% | 54.7% | 51.9% |
| Very Good (5) | 22.1% | 20.6% | 22.1% | 21.2% |
| Good (4) | 16.4% | 13.3% | 13.7% | 14.3% |
| Fair (3) | 9.9% | 6.3% | 7.4% | 7.5% |
| Poor (2) | 3.3% | 3.1% | 1.4% | 3.0% |
| Unsatisfactory (1) | 2.8% | 1.8% | 0.7% | 2.0% |
| Mean | 4.9 | 5.1 | 5.2 | 5.1 |
| Median | 5 | 6 | 6 | 6 |
| Count | 2440 | 4764 | 430 | 7634 |



5. How would you rate your professor's specific contribution to you learning in this course?

| | Response by Course Level | | | |
|--------------------|--------------------------|-------|-------|-------|
| | Lower | Upper | Grad | Total |
| Excellent (6) | 48.0% | 58.7% | 61.1% | 55.4% |
| Very Good (5) | 20.0% | 17.9% | 18.7% | 18.6% |
| Good (4) | 15.7% | 12.1% | 11.9% | 13.2% |
| Fair (3) | 9.7% | 6.4% | 5.6% | 7.4% |
| Poor (2) | 3.7% | 3.1% | 1.9% | 3.2% |
| Unsatisfactory (1) | 2.9% | 1.9% | 0.9% | 2.1% |
| Mean | 4.9 | 5.2 | 5.3 | 5.1 |
| Median | 5 | 6 | 6 | 6 |
| Count | 2440 | 4758 | 429 | 7627 |



Student Opinion of Teaching Effectiveness (SOTE)- College of University Studies Spring 2020 Term Summary

1. Rate your interest in the subject matter of this course before you took the class.

| | Response by Course Level | | | |
|---------------------|--------------------------|-------|------|-------|
| | Lower | Upper | Grad | Total |
| Very High (1) | 0.0% | 24.0% | 0.0% | 24.0% |
| High (2) | 0.0% | 28.0% | 0.0% | 28.0% |
| Moderately High (3) | 0.0% | 16.0% | 0.0% | 16.0% |
| Moderately Low (4) | 0.0% | 24.0% | 0.0% | 24.0% |
| Low (5) | 0.0% | 8.0% | 0.0% | 8.0% |
| Very Low (6) | 0.0% | 0.0% | 0.0% | 0.0% |
| Mean | . | 2.6 | . | 2.6 |
| Median | . | 2 | . | 2 |
| Count | 0 | 25 | 0 | 25 |

2. How many class sessions did you attend?

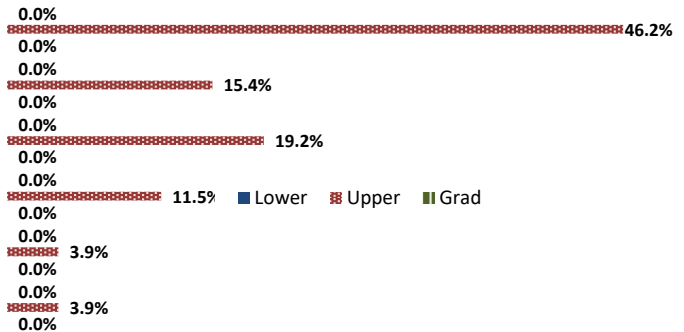
| | Response by Course Level | | | |
|--------------------|--------------------------|-------|------|-------|
| | Lower | Upper | Grad | Total |
| All (1) | 0.0% | 78.3% | 0.0% | 78.3% |
| Almost All (2) | 0.0% | 13.0% | 0.0% | 13.0% |
| More than Half (3) | 0.0% | 4.4% | 0.0% | 4.4% |
| Less than Half (4) | 0.0% | 4.4% | 0.0% | 4.4% |
| Mean | . | 1.3 | . | 1.3 |
| Median | . | 1 | . | 1 |
| Count | 0 | 23 | 0 | 23 |

3. Why did you take this course? Choose all that apply.

| | Response by Course Level | | | |
|---|--------------------------|-------|------|-------|
| | Lower | Upper | Grad | Total |
| 3a. The course fulfills a general education requirement. | 0.0% | 88.5% | 0.0% | 88.5% |
| 3b. The course fulfills a requirement in my major. | 0.0% | 15.4% | 0.0% | 15.4% |
| 3c. I have enjoyed the professor's class(es) in the past. | 0.0% | 0.0% | 0.0% | 0.0% |
| 3d. The course will improve job/career opportunities. | 0.0% | 15.4% | 0.0% | 15.4% |
| 3e. The course sounded interesting to me. | 0.0% | 11.5% | 0.0% | 11.5% |

4. How would you rate the overall quality of instruction in this course?

| | Response by Course Level | | | |
|--------------------|--------------------------|-------|------|-------|
| | Lower | Upper | Grad | Total |
| Excellent (6) | 0.0% | 46.2% | 0.0% | 46.2% |
| Very Good (5) | 0.0% | 15.4% | 0.0% | 15.4% |
| Good (4) | 0.0% | 19.2% | 0.0% | 19.2% |
| Fair (3) | 0.0% | 11.5% | 0.0% | 11.5% |
| Poor (2) | 0.0% | 3.9% | 0.0% | 3.9% |
| Unsatisfactory (1) | 0.0% | 3.9% | 0.0% | 3.9% |
| Mean | . | 4.8 | . | 4.8 |
| Median | . | 5 | . | 5 |
| Count | 0 | 26 | 0 | 26 |



5. How would you rate your professor's specific contribution to you learning in this course?

| | Response by Course Level | | | |
|--------------------|--------------------------|-------|------|-------|
| | Lower | Upper | Grad | Total |
| Excellent (6) | 0.0% | 61.5% | 0.0% | 61.5% |
| Very Good (5) | 0.0% | 11.5% | 0.0% | 11.5% |
| Good (4) | 0.0% | 11.5% | 0.0% | 11.5% |
| Fair (3) | 0.0% | 7.7% | 0.0% | 7.7% |
| Poor (2) | 0.0% | 3.9% | 0.0% | 3.9% |
| Unsatisfactory (1) | 0.0% | 3.9% | 0.0% | 3.9% |
| Mean | . | 5.1 | . | 5.1 |
| Median | . | 6 | . | 6 |
| Count | 0 | 26 | 0 | 26 |

