

# CSUSB Assessment Journeys: Welcome to the Assessment Learning Community!

CSUSB Pedagogy Forum 2021

Jennifer Mersman

Pamela Moses

Judy Sylva



In the chat you will find a link:  
[srs.campuslabs.com](https://srs.campuslabs.com)

On any device with a browser, enter  
the URL

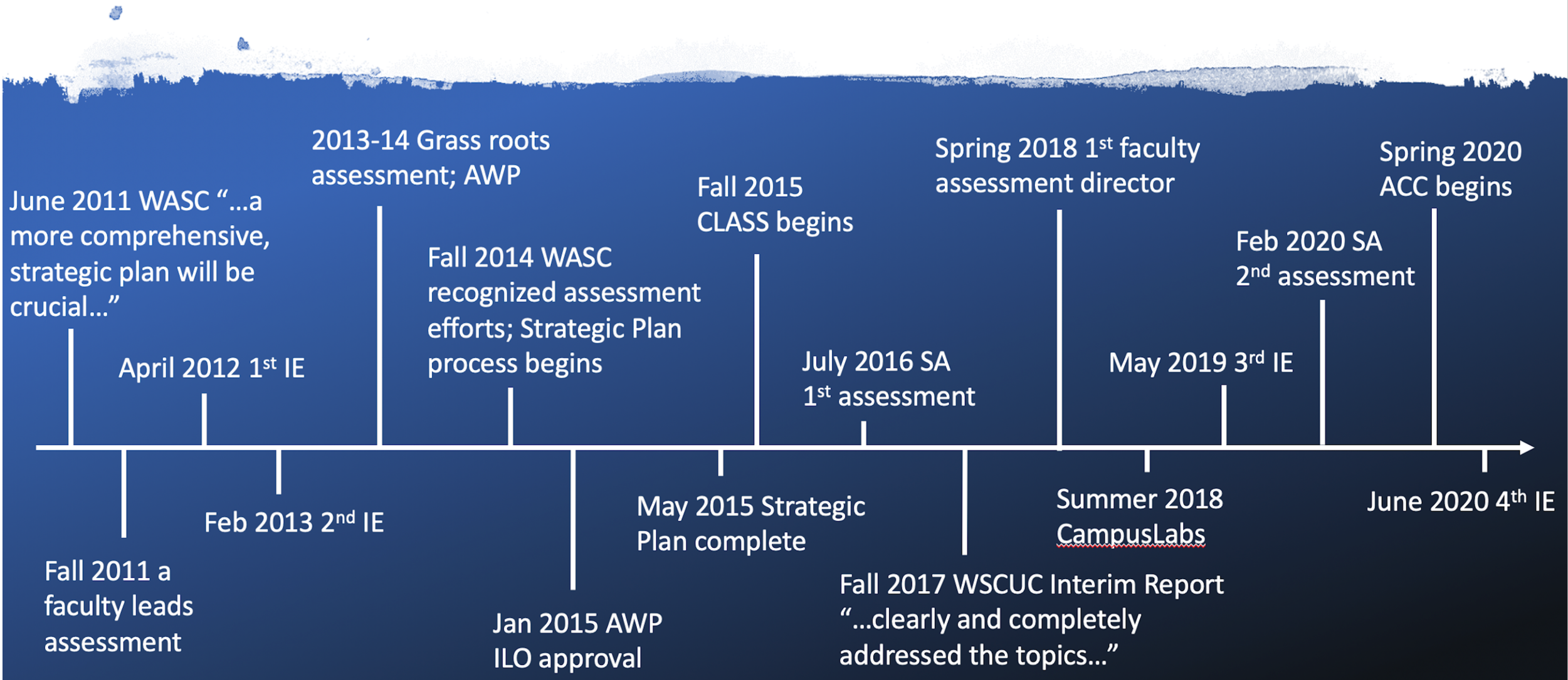
When prompted, you do not need to  
enter your real name and then enter  
the following code: **26483**

Free Word Association

What is the first word or image that comes to  
mind when you hear or see the word,

# ASSESSMENT

# History of Assessment at CSUSB



# Assessment

- First, let's take a look at the word cloud generated by our word association poll!
  - Unpack the perceptions of assessment

data survey overview outcomes impact assignment  
improvement

# Purpose for Assessment

- Some examples of purposes for assessment:
  - Assessment drives instruction/programming/services
  - Assessment deepens learning
  - Assessment informs progress
  - Assessment informs improvement/teaching practice

# Poll Question: Which one of these definitions resonates with you?

[srs.campuslabs.com](https://srs.campuslabs.com) Connect ID: **26483**

1. Assessment is the process of providing credible evidence of resources, implementation actions, and outcomes undertaken for the purpose of improving the effectiveness of instruction, programs, and services (Banta & Palomba, 2015, p. 2).
2. Assessment is any effort to gather, analyze, and interpret evidence which describes institutional, divisional, or agency effectiveness (Upcraft & Schuh, 1996, p. 18).
3. Assessment is deciding what we want our students to learn, and making sure they learn it (Suskie, 2018)
4. Broadly defined, assessment is an ongoing, systematic, and organized process aimed at understanding and improving student learning, the environment for student learning, and all college operations (Borough of Manhattan Community College, Handbook).

# Anchors for Assessment Processes at CSUSB

# Cycle of Continuous Improvement





# Logic Model

*IF WE PROVIDE THIS... ..IT WILL PRODUCE THIS RESULT OR CHANGE*



Staff  
Time/\$  
Materials  
Equipment  
Expertise and  
Knowledge Base

Activities  
Products  
Services

Awareness  
Behavior  
Knowledge  
Attitudes  
Skills  
Learning  
Opinions  
Confidence  
Motivations

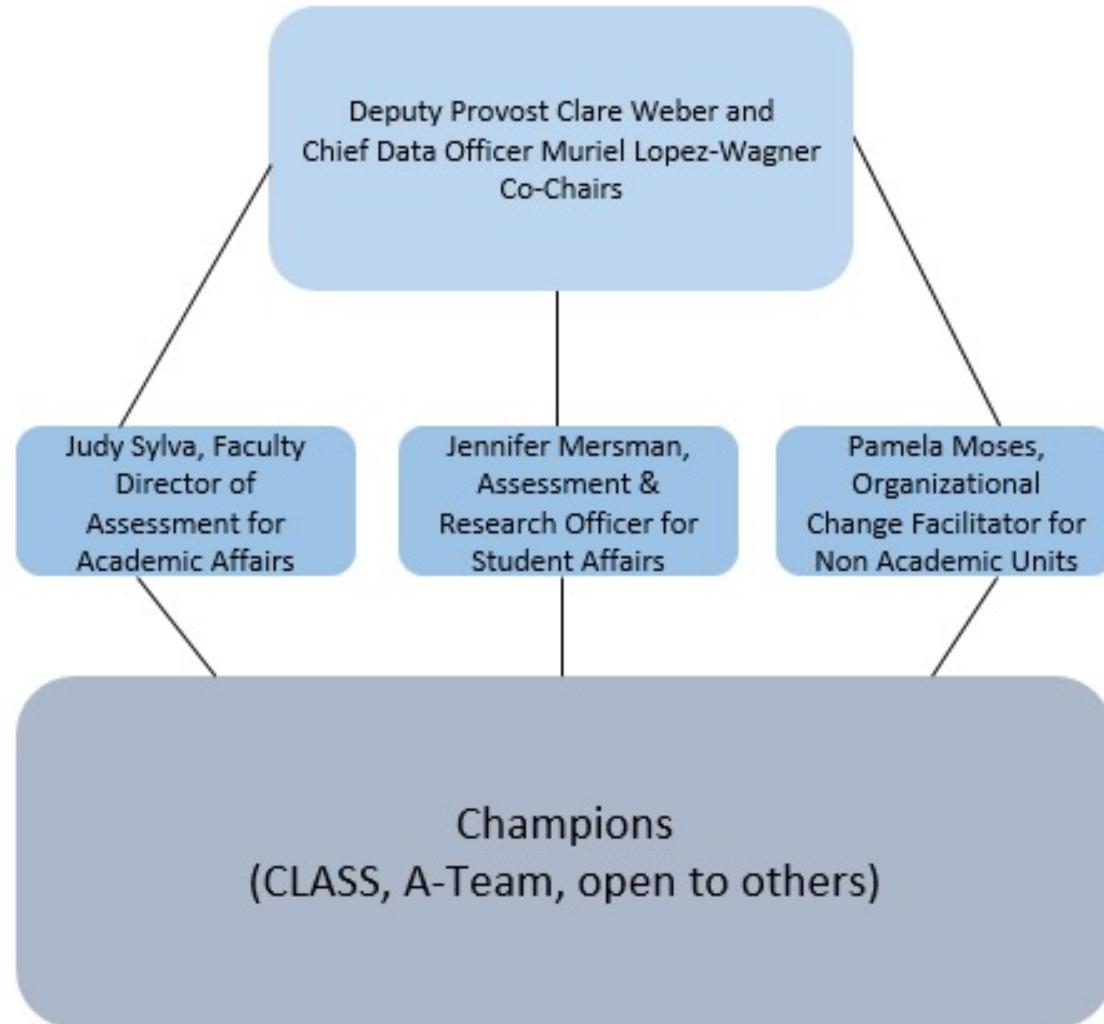
Counts  
Percent  
Yes/No  
Internal Surveys  
External Surveys  
Grades

Achievement  
Engagement  
Contribution to  
Society  
Well-Being  
Scholarship  
Discovery

# Assessment Capability at CSUSB



# Assessment Capability Collaborative



# Current and Emerging Assessment Structures

- Assessment Capability Leadership Institute (ACLI)
  - Summer ACLI (2021) is for faculty to develop and share their knowledge, understanding, and skills about program level assessment and then then to leverage those skills to develop and implement processes and systems to assess one or more program learning outcome(s) (PLO) in their degree program to kick-off PLO assessment for the semester program. These projects are expected to create the conditions for thoughtful, sustainable, and meaningful assessment of PLO in the degree programs to inform improvement in program effectiveness and student success. The focus for Summer ACLI 2021 in program level assessment is on identifying and targeting equity gaps.

# Current and Emerging Assessment Structures

- Faculty Fellows
  - The Faculty Assessment Capability Fellows program is to promote leadership in assessment through projects that promote the development and implementation of sustainable processes and best practices to support the use of evidence in decision-making at the department, college, and division levels. The focus for the Faculty Assessment Capability Fellows in 2021-22 is diversity, equity, and inclusiveness in evidence-informed decision-making.
- [College Assessment Coordinators](#)