

A wide-angle photograph of a modern university campus. In the background, a large, light-colored building with a prominent glass facade and a unique angular design stands behind a green lawn. Several large, leafy trees are scattered across the scene, with two particularly large ones in the foreground framing the view. In the immediate foreground, there are out-of-focus pink and white flowers. A dark horizontal bar runs across the lower third of the image, serving as a background for the text.

Welcome to your Graduate Student Orientation

---

*We will begin shortly*





# Office of Graduate Studies

LOCATED IN THE COLLEGE OF EDUCATION BUILDING: CE-356

PHONE: (909) 537-5058

EMAIL: [GRADSTUD@CSUSB.EDU](mailto:GRADSTUD@CSUSB.EDU)

# Where are you from?





100





# Office of Graduate Studies



Dr. Dorota Huizinga  
Dean of Graduate  
Studies and Associate  
Provost for Research



Dr. Caroline Vickers  
Interim Associate Dean  
of Graduate Studies

# Office of Graduate Studies



**Shelby Reeder**  
[sreeder@csusb.edu](mailto:sreeder@csusb.edu)  
Graduate Studies Lead / Thesis  
Reviewer



**April Lane**  
[alane@csusb.edu](mailto:alane@csusb.edu)  
Graduate Student Resource  
Specialist



**Cecilia Farmer**  
[Cecilia.Farmer@csusb.edu](mailto:Cecilia.Farmer@csusb.edu)  
Graduate Admissions Evaluator



**Chris Songsittichok**  
[Chris.Songsittichok@csusb.edu](mailto:Chris.Songsittichok@csusb.edu)  
WebAdMIT and Budget  
Specialist



**Erminia Cross**  
[Erminia.Cross@csusb.edu](mailto:Erminia.Cross@csusb.edu)  
Graduate Recruitment Specialist



**Megan Kinnally**  
[Megan.Kinnally@csusb.edu](mailto:Megan.Kinnally@csusb.edu)  
Graduate Student Engagement  
Specialist



**Kimberly De Leon**  
[Kimberly.DeLeon@csusb.edu](mailto:Kimberly.DeLeon@csusb.edu)  
Graduate Admissions  
Coordinator



**Mark Anderson**  
[Mark.Anderson2@csusb.edu](mailto:Mark.Anderson2@csusb.edu)  
Graduate Systems Analyst



# Graduate Student Activities

- ▶ **Graduate Education Week**
  - ▶ Fall
- ▶ **Graduate Student Social Mixers**
  - ▶ Fall and Spring
- ▶ **Professional Resource and**
- ▶ **Engagement Programs (PREP)**
  - ▶ Ongoing
- ▶ **Thesis Retreats**
  - ▶ Fall and Winter Intersession
- ▶ **Writing Accountability Groups**
  - ▶ Fall and Spring
- ▶ **Grad Slam: Three Minute Thesis Competition**
  - ▶ Spring





# Asynchronous Graduate Student Orientation Course

[my.csusb.edu](https://my.csusb.edu)



Graduate Student Orientation Course





# Graduate Student Resource Specialist

APRIL LANE

GRADUATE STUDENT RESOURCE SPECIALIST

OFFICE OF GRADUATE STUDIES

[alane@csusb.edu](mailto:alane@csusb.edu) | (909) 537-7381



# The Role of the Graduate Student Resource Specialist

- ▶ Offer support to new, and continuing, postbaccalaureate students.
- ▶ A few services offered:
  - Assistance in identifying university policies
  - Graduate Studies Forms
  - Campus and community resources
  - Support services offered to postbaccalaureate applicants and current students at the San Bernardino and Palm Desert campuses.





# The Office of Graduate Studies: Here to Help Support You!

## ► The Office of Graduate Studies Website

- Our office contact information
- Live chat is available during business hours
- Locate forms
- Find upcoming events hosted by our office
- The [Graduate Student Handbook](#) – Download and keep a copy for reference
- Financial Support Resources
- Professional Resource and Engagement Program (PREP)
- Graduate Student Resource Center
- Thesis/Project/Dissertation Resources (including templates!)
- And much, much more.





# The Office of Graduate Studies

## Campus Resources & Partners

- ▶ Graduate Student Success Center (SMSU South 102)
- ▶ The Career Center (UH-329)
- ▶ The Graduate Student Support Group (Virtual)
- ▶ The Office of Student Research (CE-357)
- ▶ The Graduate Writing Center (CE-310)
- ▶ The Speaking Center (JB-230)
- ▶ The Veterans Success Center (BDG23-06)
- ▶ Any many more!





## Have Questions or Need Assistance? Let's Connect!

- Feel free to reach out by phone or email.
- To schedule an in-person or virtual appointment, email me some days and times you are available to meet, and I will follow-up with you to schedule.





# Graduate Student Success Center

MOHAMMAD ALLARY

SMSU 102



# Mission Statement

- ▶ The mission of the Graduate Student Success Center is to promote graduate student
- ▶ community and success through a one- stop- shop approach to support across the graduate
- ▶ student lifespan from recruitment and orientation to graduation and beyond.



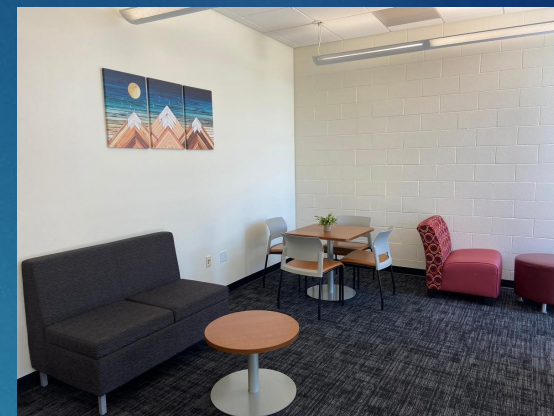
# Social Lounge





# Amenities!

Computer Lab, Kitchen/  
Snacks, Coffee Hour, Study  
Space, & Free Printing





# Social Events!





# Upcoming Events



- ▶ Welcome Back Mixer

- Thursday, August 25, 4 p.m. to 6 p.m.

- ▶ Karaoke Night

- Wednesday, September 7, 5 p.m. to 7 p.m.

- ▶ Bowling Night

- Tuesday, October 4, 5 p.m. to 7 p.m.

- ▶ Cookies & Cocoa

- ▶ Tuesday, November 29, 4 p.m. to 5 p.m.





# Thank You!

Questions?

# Graduate Student Society

JACQUELINE BERNAL



# The Graduate Student Society

- ▶ Connections with other graduate students
- ▶ Enhancing the graduate student experience
- ▶ Don't become isolated. Get involved!
- ▶ Sharing multiple perspectives
- ▶ Interdisciplinary research
- ▶ Grad school can be stressful. TGSS helps you relax!
- ▶ Networking



# Graduate Student Society's Goal

- ▶ Our goal for the academic year is to reach out to as many graduate students as possible, to form a tight-knit community of graduate students.
- ▶ We hope to provide information on resources and opportunities for current and future graduate students.
- ▶ We want graduate students to know that they are not alone, and that we are here for support.





# Graduate Student Society's Past Events

- ▶ Mixers
- ▶ Halloween events
- ▶ Graduate recognition celebrations



# Office of Student Research

DR. RYAN KEATING

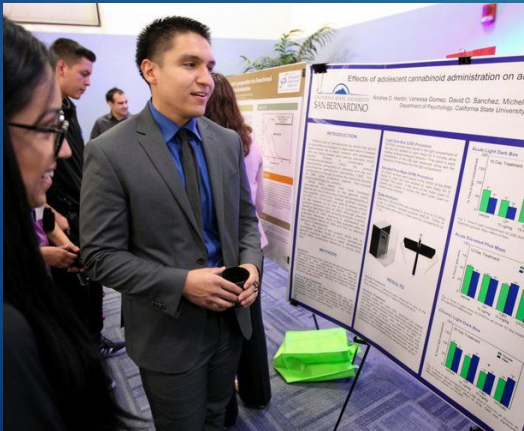




# Office of Student Research

# Welcome!

- ▶ The Office of Student Research (OSR):
  - The mission of the OSR is to facilitate the engagement of students in scholarly and creative activities related to their disciplines by providing resources that support both student scholars and faculty mentors.





# Benefits of Research

- ▶ Active Learning
- ▶ Career Preparation
- ▶ Graduate School Preparation
- ▶ Prepare for Lifetime Learning
- ▶ Develop relationship with mentor and peers



# How to Get Involved

- ▶ Speak to your faculty mentors
- ▶ Be on the look out for opportunities
- ▶ Follow the OSR on Social Media
- ▶ Visit the [OSR webpage](#)



@CSUSBOSR



@osr\_csusb



@osr\_csusb



# OSR Opportunities

- ▶ Workshops
- ▶ Funding Opportunities
  - ASI Student Research & Travel Grant
  - Faculty/Student Grant
  - Student Grant
  - SSI Graduate Student Culminating Project Grant
- ▶ Programs
  - Peer-Lab and Peer-Research Consultant Programs
  - Research Matters Federal Work Study Program
- ▶ Events
  - CSUSB/CSU Research Competition
  - Meeting of the Minds



# Thank you – Contact Us!

- ▶ Dr. Ryan W. Keating, Interim Faculty Director
    - ▶ rkeating@csusb.edu
  - ▶ Danielle White, Administrative Support Coordinator
    - ▶ dnwhite@csusb.edu
- 
- Website: [www.csusb.edu/student-research](http://www.csusb.edu/student-research)
  - E-mail: [OSR@csusb.edu](mailto:OSR@csusb.edu)
  - Location: College of Education 354
  - Phone: (909) 537-3728



# Graduate Student Writing Center

Edgar Lopez Anguiano & Manny Herrera



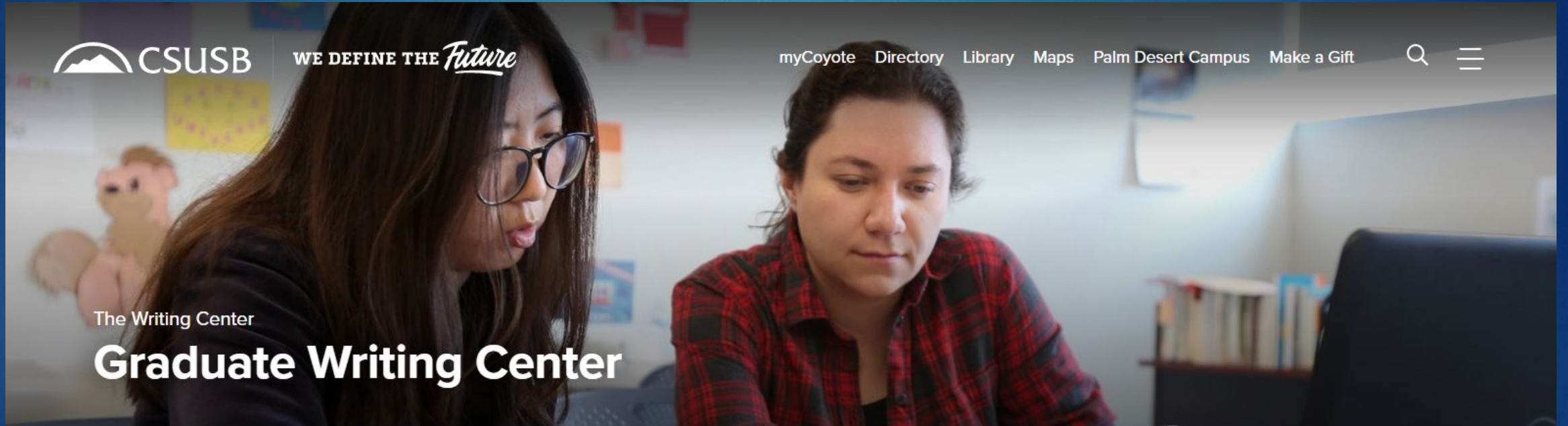
WE DEFINE THE *Future*

[myCoyote](#) [Directory](#) [Library](#) [Maps](#) [Palm Desert Campus](#) [Make a Gift](#)



The Writing Center

# Graduate Writing Center





# Pfau Library

LISA BARTLE

# Library Resources



Getting help from a librarian:

<https://libguides.csusb.edu/homereseach>

Workshop calendar:

[https://csusb.libcal.com/calendar/workshops/?cid=1218&t=m&d=0000-00-00  
&cal=1218&inc=0](https://csusb.libcal.com/calendar/workshops/?cid=1218&t=m&d=0000-00-00&cal=1218&inc=0)

Library guides:

<https://libguides.csusb.edu/?b=s>

Research tutorials:

<https://libguides.csusb.edu/vtutorials>



# Q+A

WHAT QUESTIONS DO YOU HAVE FOR US?

