

MASTER OF SOCIAL WORK DEGREE PROGRAM

The Master of Social Work degree at CSUSB is designed to prepare advanced social work practitioners as:

- Change agents in complex situations
- Leaders
- Interprofessional and interagency collaborators

Experience a professional social work education that provides training to enter the social work profession through academic and field practicum curricula areas: research, human behavior, social policy, and practice with individuals, groups, organizations and communities.



WE DEFINE THE *Future*

PROGRAM CURRICULUM

The MSW program emphasizes the National Association of Social Workers' core social work value, professionalism and excellence in critical analysis.

MODEL ONE

Two academic years of coursework. This option is best for students who can devote their time and attention to full-time intensive study.

MODEL TWO

The Pathway Distance Education Program, an online option that offers the three-year program via distance education.

MODEL THREE

Offers the same course work as Model 1 over three academic years. Ideal for students who want to develop their skills within theoretical frameworks prior to field education.

Program curriculum is an advanced generalist model that prepares students for employment in a multitude of settings serving a diverse range of clients. The field component offers students a practice setting to apply theoretical and conceptual contributions acquired from their classroom learning. In the advanced year, students select an area of study to specialize in. This can be a social issue (homelessness, substance abuse, spirituality, etc.), a client population (children, elderly, inner city, etc.), or field of practice (child welfare, school of social work, international social work, etc.).

The competitive program is based upon the requirements of The Council of Social Work Education (CSWE), the national accrediting body for social work programs. Graduates of the program demonstrate social work competencies as defined by CSWE. CSUSB's MSW program has been fully accredited since 1992.

ADMISSION REQUIREMENTS

A baccalaureate degree from an accredited college or university.

Grade-Point Average:

- A cumulative grade-point average of 3.0 or better.*
- A grade-point average of 3.0 or better in the last 90 units or last 60 units*

*A GPA of 2.8 or higher (cumulative OR last 90 units) may be considered with significant social service experience and overall application.

Academic background in behavioral and social sciences preferred.

A year of full-time paid experience and/or applicable internship or volunteer service in the field of social work (this requirement may be waived).

Evidence of personal qualifications, motivation and potential that gives promise of a successful social worker; an autobiographical statement.

Completion of coursework related to the following educational domains with a passing grade:

- Social Research Methods
- Human Behavior
- Human Physiology

APPLICATION PROCESS

The priority deadline for submitting an MSW application is January 15th, but applications may still be accepted after that date if slots are available. Current information and information session dates are listed in the school's website. Admission decisions are announced in spring.

Monetary support is available to students interested in pursuing or continuing a career in public child welfare. Title IV-E program, SCulbert@CSUSB.edu

To reach someone directly about applying to the Master of Social Work program, please contact: Melinda Corral, (909) 537-5557, Melinda.Corral@csusb.edu

 socialwork.csusb.edu

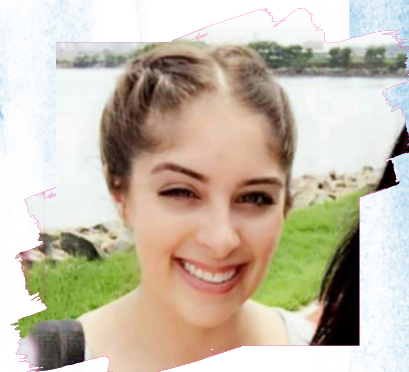
 social work at csusb

 csusbsocialwork

 csusbsocialwork

 csusbsocialwork

WE DEFINE THE *Future*



"The Master of Social Work program at CSUSB provides students with an influential opportunity to expand their horizons in the social work field and their own life story. This is an experience I will never forget."

– Sasha Serafini,
Full-time Cohort, Study Abroad
Program Feature



"The MSW program provided me the flexibility to be able to actually go to school. Amazing support from faculty and staff. I knew that I would have support and encouragement from people who had been there and understood the joys and heartache of the work. I am thankful for such amazing guides on this journey."

– Stephanie Schneider,
Alumni, Part-time Cohort