

## Student Opinion of Teaching Effectiveness (SOTE)- College of Arts & Letters Fall 2022 Term Summary

### 1. Rate your interest in the subject matter of this course before you took the class.

	Response by Course Level			
	Lower	Upper	Grad	Total
Very High (1)	24.3%	32.7%	53.3%	29.1%
High (2)	20.8%	23.1%	24.4%	22.0%
Moderately High (3)	29.5%	26.5%	14.1%	27.7%
Moderately Low (4)	16.3%	11.3%	5.2%	13.6%
Low (5)	6.2%	4.1%	2.2%	5.1%
Very Low (6)	2.9%	2.2%	0.7%	2.5%
Mean	2.7	2.4	1.8	2.5
Median	3	2	1	2
Count	3046	3091	135	6272

### 2. How many class sessions did you attend?

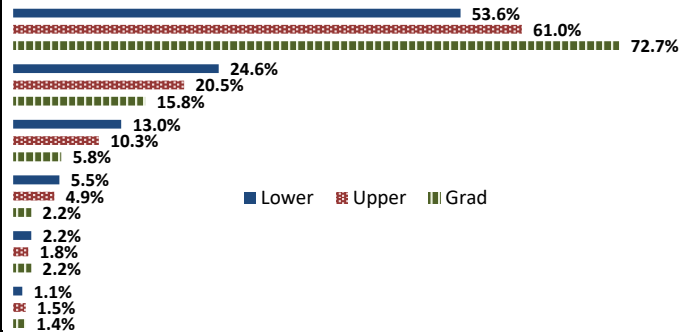
	Response by Course Level			
	Lower	Upper	Grad	Total
All (1)	47.0%	51.1%	62.3%	49.4%
Almost All (2)	44.5%	41.0%	32.3%	42.5%
More than Half (3)	6.4%	5.5%	4.6%	5.9%
Less than Half (4)	2.1%	2.4%	0.8%	2.2%
Mean	1.6	1.6	1.4	1.6
Median	2	1	1	2
Count	2853	2867	130	5850

### 3. Why did you take this course? Choose all that apply.

	Response by Course Level			
	Lower	Upper	Grad	Total
3a. The course fulfills a general education requirement.	73.9%	54.9%	39.6%	63.8%
3b. The course fulfills a requirement in my major.	39.5%	65.6%	84.9%	53.4%
3c. I have enjoyed the professor's class(es) in the past.	5.0%	12.4%	31.7%	9.2%
3d. The course will improve job/career opportunities.	17.8%	20.2%	33.1%	19.3%
3e. The course sounded interesting to me.	33.1%	40.5%	39.6%	36.9%

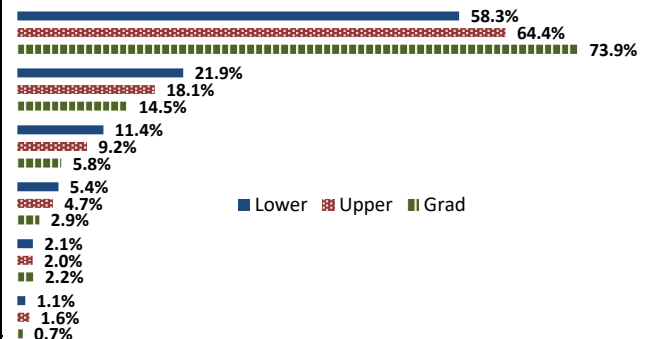
### 4. How would you rate the overall quality of instruction in this course?

	Response by Course Level			
	Lower	Upper	Grad	Total
Excellent (6)	53.6%	61.0%	72.7%	57.7%
Very Good (5)	24.6%	20.5%	15.8%	22.4%
Good (4)	13.0%	10.3%	5.8%	11.5%
Fair (3)	5.5%	4.9%	2.2%	5.2%
Poor (2)	2.2%	1.8%	2.2%	2.0%
Unsatisfactory (1)	1.1%	1.5%	1.4%	1.3%
Mean	5.2	5.3	5.5	5.2
Median	6	6	6	6
Count	3126	3182	139	6447



### 5. How would you rate your professor's specific contribution to you learning in this course?

	Response by Course Level			
	Lower	Upper	Grad	Total
Excellent (6)	58.3%	64.4%	73.9%	61.6%
Very Good (5)	21.9%	18.1%	14.5%	19.9%
Good (4)	11.4%	9.2%	5.8%	10.2%
Fair (3)	5.4%	4.7%	2.9%	5.0%
Poor (2)	2.1%	2.0%	2.2%	2.0%
Unsatisfactory (1)	1.1%	1.6%	0.7%	1.3%
Mean	5.3	5.3	5.5	5.3
Median	6	6	6	6
Count	3119	3180	138	6437



# Student Opinion of Teaching Effectiveness (SOTE)- College of Business and Public Administration Fall 2022 Term Summary

## 1. Rate your interest in the subject matter of this course before you took the class.

	Response by Course Level			
	Lower	Upper	Grad	Total
Very High (1)	24.5%	31.1%	40.5%	31.3%
High (2)	20.8%	24.4%	23.4%	23.7%
Moderately High (3)	28.6%	27.3%	20.8%	26.6%
Moderately Low (4)	17.0%	11.5%	10.8%	12.3%
Low (5)	5.1%	3.4%	3.3%	3.6%
Very Low (6)	4.0%	2.4%	1.2%	2.5%
Mean	2.7	2.4	2.2	2.4
Median	3	2	2	2
Count	605	2745	509	3859

## 2. How many class sessions did you attend?

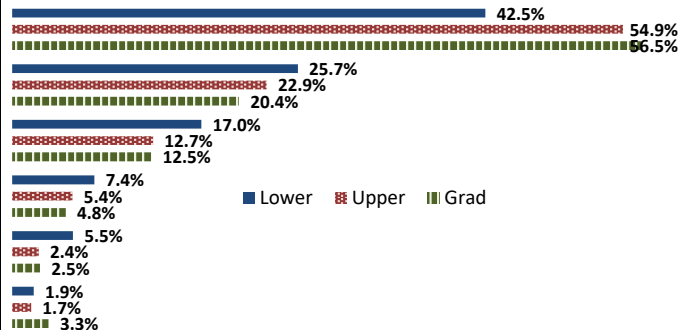
	Response by Course Level			
	Lower	Upper	Grad	Total
All (1)	55.3%	57.3%	66.9%	58.3%
Almost All (2)	29.7%	33.7%	28.2%	32.3%
More than Half (3)	8.0%	5.8%	2.9%	5.8%
Less than Half (4)	7.1%	3.2%	2.0%	3.7%
Mean	1.7	1.5	1.4	1.5
Median	1	1	1	1
Count	566	2559	490	3615

## 3. Why did you take this course? Choose all that apply.

	Response by Course Level			
	Lower	Upper	Grad	Total
3a. The course fulfills a general education requirement.	47.4%	39.2%	41.0%	40.7%
3b. The course fulfills a requirement in my major.	75.5%	88.0%	84.9%	85.6%
3c. I have enjoyed the professor's class(es) in the past.	7.2%	9.2%	14.0%	9.5%
3d. The course will improve job/career opportunities.	27.7%	32.1%	40.0%	32.5%
3e. The course sounded interesting to me.	25.0%	23.7%	28.9%	24.6%

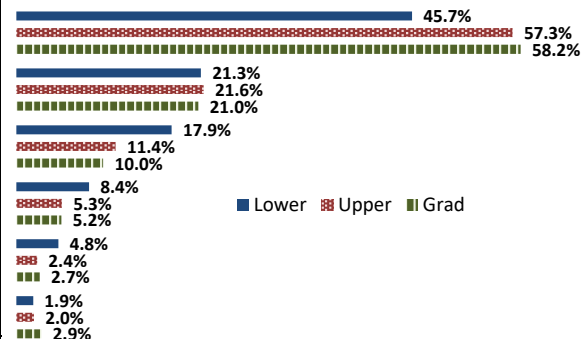
## 4. How would you rate the overall quality of instruction in this course?

	Response by Course Level			
	Lower	Upper	Grad	Total
Excellent (6)	42.5%	54.9%	56.5%	53.2%
Very Good (5)	25.7%	22.9%	20.4%	23.0%
Good (4)	17.0%	12.7%	12.5%	13.3%
Fair (3)	7.4%	5.4%	4.8%	5.7%
Poor (2)	5.5%	2.4%	2.5%	2.9%
Unsatisfactory (1)	1.9%	1.7%	3.3%	2.0%
Mean	4.9	5.2	5.1	5.1
Median	5	6	6	6
Count	623	2801	520	3944



## 5. How would you rate your professor's specific contribution to you learning in this course?

	Response by Course Level			
	Lower	Upper	Grad	Total
Excellent (6)	45.7%	57.3%	58.2%	55.6%
Very Good (5)	21.3%	21.6%	21.0%	21.5%
Good (4)	17.9%	11.4%	10.0%	12.3%
Fair (3)	8.4%	5.3%	5.2%	5.7%
Poor (2)	4.8%	2.4%	2.7%	2.8%
Unsatisfactory (1)	1.9%	2.0%	2.9%	2.1%
Mean	4.9	5.2	5.2	5.1
Median	5	6	6	6
Count	620	2796	519	3935



## Student Opinion of Teaching Effectiveness (SOTE)- College of Education Fall 2022 Term Summary

### 1. Rate your interest in the subject matter of this course before you took the class.

	Response by Course Level			
	Lower	Upper	Grad	Total
Very High (1)	41.4%	38.6%	47.5%	43.8%
High (2)	32.8%	26.9%	24.4%	25.6%
Moderately High (3)	19.0%	26.3%	17.3%	20.9%
Moderately Low (4)	6.9%	6.1%	6.8%	6.5%
Low (5)	0.0%	1.5%	2.8%	2.2%
Very Low (6)	0.0%	0.7%	1.2%	1.0%
Mean	1.9	2.1	2.0	2.0
Median	2	2	2	2
Count	58	975	1405	2438

### 2. How many class sessions did you attend?

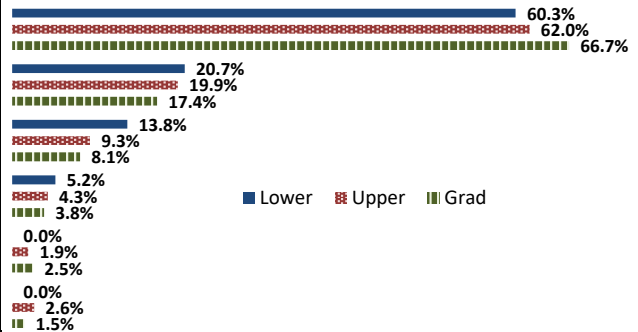
	Response by Course Level			
	Lower	Upper	Grad	Total
All (1)	64.2%	73.3%	81.0%	77.5%
Almost All (2)	35.9%	25.1%	17.4%	20.9%
More than Half (3)	0.0%	1.0%	1.1%	1.0%
Less than Half (4)	0.0%	0.7%	0.5%	0.6%
Mean	1.4	1.3	1.2	1.2
Median	1	1	1	1
Count	53	922	1319	2294

### 3. Why did you take this course? Choose all that apply.

	Response by Course Level			
	Lower	Upper	Grad	Total
3a. The course fulfills a general education requirement.	41.4%	31.0%	23.7%	27.0%
3b. The course fulfills a requirement in my major.	81.0%	82.5%	86.4%	84.7%
3c. I have enjoyed the professor's class(es) in the past.	3.5%	4.5%	12.1%	8.9%
3d. The course will improve job/career opportunities.	17.2%	35.6%	37.9%	36.5%
3e. The course sounded interesting to me.	25.9%	13.4%	13.9%	14.0%

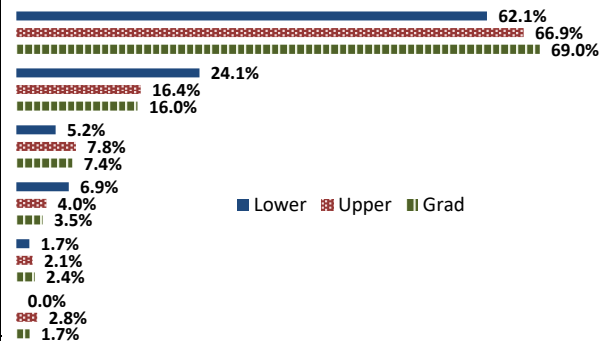
### 4. How would you rate the overall quality of instruction in this course?

	Response by Course Level			
	Lower	Upper	Grad	Total
Excellent (6)	60.3%	62.0%	66.7%	64.7%
Very Good (5)	20.7%	19.9%	17.4%	18.4%
Good (4)	13.8%	9.3%	8.1%	8.7%
Fair (3)	5.2%	4.3%	3.8%	4.0%
Poor (2)	0.0%	1.9%	2.5%	2.2%
Unsatisfactory (1)	0.0%	2.6%	1.5%	1.9%
Mean	5.4	5.3	5.4	5.3
Median	6	6	6	6
Count	58	987	1440	2485



### 5. How would you rate your professor's specific contribution to you learning in this course?

	Response by Course Level			
	Lower	Upper	Grad	Total
Excellent (6)	62.1%	66.9%	69.0%	68.0%
Very Good (5)	24.1%	16.4%	16.0%	16.3%
Good (4)	5.2%	7.8%	7.4%	7.5%
Fair (3)	6.9%	4.0%	3.5%	3.8%
Poor (2)	1.7%	2.1%	2.4%	2.3%
Unsatisfactory (1)	0.0%	2.8%	1.7%	2.1%
Mean	5.4	5.3	5.4	5.4
Median	6	6	6	6
Count	58	982	1439	2479



## Student Opinion of Teaching Effectiveness (SOTE)- College of Natural Sciences Fall 2022 Term Summary

### 1. Rate your interest in the subject matter of this course before you took the class.

	Response by Course Level			
	Lower	Upper	Grad	Total
Very High (1)	22.7%	32.2%	45.8%	27.8%
High (2)	22.8%	25.6%	33.4%	24.4%
Moderately High (3)	28.2%	25.2%	14.6%	26.4%
Moderately Low (4)	16.9%	11.6%	4.9%	14.1%
Low (5)	5.5%	3.1%	1.3%	4.3%
Very Low (6)	3.9%	2.2%	0.0%	3.0%
Mean	2.7	2.3	1.8	2.5
Median	3	2	2	2
Count	4763	4200	308	9271

### 2. How many class sessions did you attend?

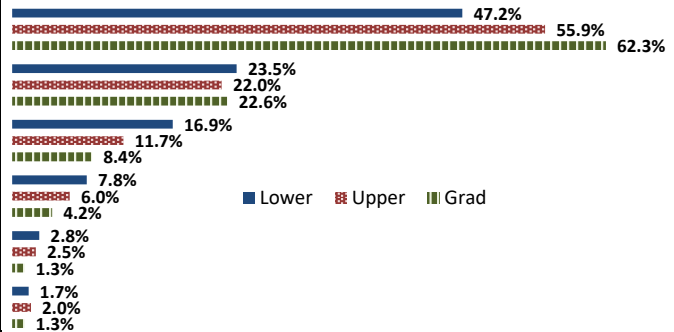
	Response by Course Level			
	Lower	Upper	Grad	Total
All (1)	56.2%	56.9%	62.5%	56.7%
Almost All (2)	36.5%	36.0%	33.8%	36.2%
More than Half (3)	5.3%	5.1%	3.4%	5.2%
Less than Half (4)	2.0%	2.0%	0.3%	1.9%
Mean	1.5	1.5	1.4	1.5
Median	1	1	1	1
Count	4417	3889	296	8602

### 3. Why did you take this course? Choose all that apply.

	Response by Course Level			
	Lower	Upper	Grad	Total
3a. The course fulfills a general education requirement.	57.8%	33.5%	44.2%	46.4%
3b. The course fulfills a requirement in my major.	69.3%	82.7%	86.1%	75.9%
3c. I have enjoyed the professor's class(es) in the past.	4.0%	12.0%	23.9%	8.2%
3d. The course will improve job/career opportunities.	18.5%	24.0%	54.5%	22.2%
3e. The course sounded interesting to me.	19.8%	27.8%	40.3%	24.1%

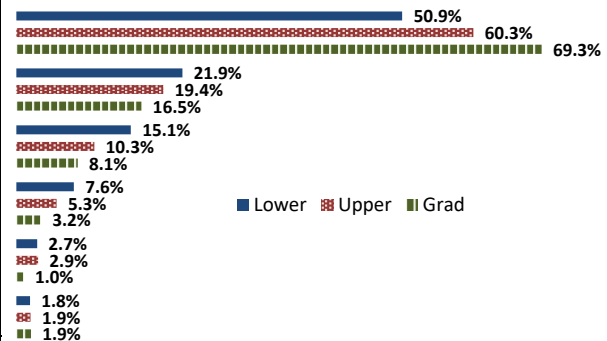
### 4. How would you rate the overall quality of instruction in this course?

	Response by Course Level			
	Lower	Upper	Grad	Total
Excellent (6)	47.2%	55.9%	62.3%	51.6%
Very Good (5)	23.5%	22.0%	22.6%	22.8%
Good (4)	16.9%	11.7%	8.4%	14.2%
Fair (3)	7.8%	6.0%	4.2%	6.9%
Poor (2)	2.8%	2.5%	1.3%	2.6%
Unsatisfactory (1)	1.7%	2.0%	1.3%	1.8%
Mean	5.0	5.2	5.4	5.1
Median	5	6	6	6
Count	4889	4286	310	9485



### 5. How would you rate your professor's specific contribution to your learning in this course?

	Response by Course Level			
	Lower	Upper	Grad	Total
Excellent (6)	50.9%	60.3%	69.3%	55.7%
Very Good (5)	21.9%	19.4%	16.5%	20.6%
Good (4)	15.1%	10.3%	8.1%	12.7%
Fair (3)	7.6%	5.3%	3.2%	6.4%
Poor (2)	2.7%	2.9%	1.0%	2.7%
Unsatisfactory (1)	1.8%	1.9%	1.9%	1.8%
Mean	5.1	5.2	5.4	5.1
Median	5	6	6	6
Count	4888	4280	309	9477



# Student Opinion of Teaching Effectiveness (SOTE)- College of Social and Behavioral Sciences Fall 2022 Term Summary

## 1. Rate your interest in the subject matter of this course before you took the class.

	Response by Course Level			
	Lower	Upper	Grad	Total
Very High (1)	22.8%	33.6%	41.7%	29.7%
High (2)	22.4%	24.2%	23.8%	23.4%
Moderately High (3)	28.1%	25.5%	20.6%	26.3%
Moderately Low (4)	17.3%	11.4%	10.4%	13.8%
Low (5)	5.5%	3.2%	2.2%	4.1%
Very Low (6)	3.9%	2.2%	1.4%	2.9%
Mean	2.7	2.3	2.1	2.5
Median	3	2	2	2
Count	3436	4235	588	8259

## 2. How many class sessions did you attend?

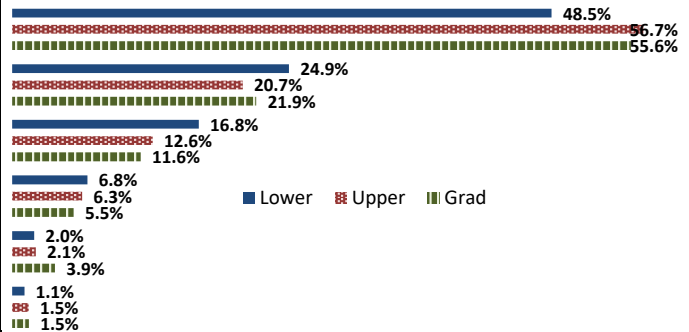
	Response by Course Level			
	Lower	Upper	Grad	Total
All (1)	63.1%	49.8%	66.3%	56.5%
Almost All (2)	29.4%	42.5%	32.8%	36.4%
More than Half (3)	4.4%	5.4%	0.7%	4.7%
Less than Half (4)	3.2%	2.3%	0.2%	2.5%
Mean	1.5	1.6	1.3	1.5
Median	1	2	1	1
Count	3137	3926	552	7615

## 3. Why did you take this course? Choose all that apply.

	Response by Course Level			
	Lower	Upper	Grad	Total
3a. The course fulfills a general education requirement.	70.0%	40.3%	23.2%	51.5%
3b. The course fulfills a requirement in my major.	50.5%	80.5%	91.8%	68.8%
3c. I have enjoyed the professor's class(es) in the past.	3.5%	9.3%	9.7%	6.9%
3d. The course will improve job/career opportunities.	16.8%	23.6%	22.2%	20.7%
3e. The course sounded interesting to me.	27.3%	37.6%	17.9%	31.9%

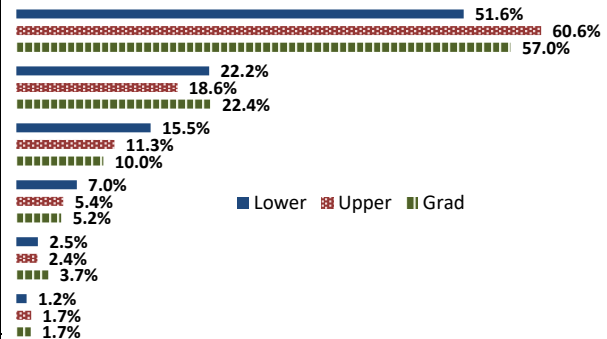
## 4. How would you rate the overall quality of instruction in this course?

	Response by Course Level			
	Lower	Upper	Grad	Total
Excellent (6)	48.5%	56.7%	55.6%	53.2%
Very Good (5)	24.9%	20.7%	21.9%	22.6%
Good (4)	16.8%	12.6%	11.6%	14.3%
Fair (3)	6.8%	6.3%	5.5%	6.4%
Poor (2)	2.0%	2.1%	3.9%	2.2%
Unsatisfactory (1)	1.1%	1.5%	1.5%	1.3%
Mean	5.1	5.2	5.2	5.1
Median	5	6	6	6
Count	3545	4331	597	8473



## 5. How would you rate your professor's specific contribution to you learning in this course?

	Response by Course Level			
	Lower	Upper	Grad	Total
Excellent (6)	51.6%	60.6%	57.0%	56.6%
Very Good (5)	22.2%	18.6%	22.4%	20.4%
Good (4)	15.5%	11.3%	10.0%	13.0%
Fair (3)	7.0%	5.4%	5.2%	6.1%
Poor (2)	2.5%	2.4%	3.7%	2.5%
Unsatisfactory (1)	1.2%	1.7%	1.7%	1.5%
Mean	5.1	5.2	5.2	5.2
Median	5	6	6	6
Count	3539	4324	598	8461



## Student Opinion of Teaching Effectiveness (SOTE)- College of University Studies Fall 2022 Term Summary

### 1. Rate your interest in the subject matter of this course before you took the class.

	Response by Course Level			
	Lower	Upper	Grad	Total
Very High (1)	12.1%	13.8%	0.0%	12.4%
High (2)	13.9%	10.3%	0.0%	13.4%
Moderately High (3)	26.7%	51.7%	0.0%	30.4%
Moderately Low (4)	32.7%	13.8%	0.0%	29.9%
Low (5)	12.7%	6.9%	0.0%	11.9%
Very Low (6)	1.8%	3.5%	0.0%	2.1%
Mean	3.3	3.0	.	3.2
Median	3	3	.	3
Count	165	29	0	194

### 2. How many class sessions did you attend?

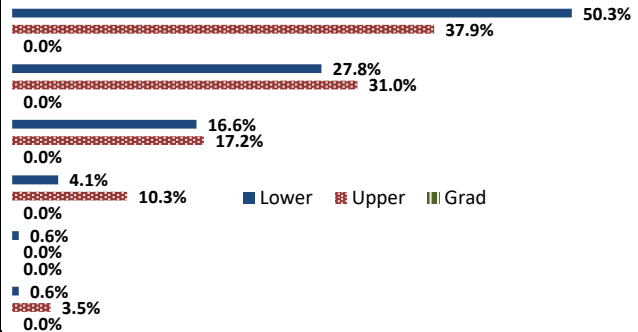
	Response by Course Level			
	Lower	Upper	Grad	Total
All (1)	53.4%	25.0%	0.0%	49.4%
Almost All (2)	39.9%	75.0%	0.0%	44.8%
More than Half (3)	4.7%	0.0%	0.0%	4.1%
Less than Half (4)	2.0%	0.0%	0.0%	1.7%
Mean	1.6	1.7	.	1.6
Median	1	2	.	2
Count	148	24	0	172

### 3. Why did you take this course? Choose all that apply.

	Response by Course Level			
	Lower	Upper	Grad	Total
3a. The course fulfills a general education requirement.	90.5%	75.9%	0.0%	88.4%
3b. The course fulfills a requirement in my major.	26.6%	13.8%	0.0%	24.8%
3c. I have enjoyed the professor's class(es) in the past.	1.2%	6.9%	0.0%	2.0%
3d. The course will improve job/career opportunities.	9.5%	20.7%	0.0%	11.1%
3e. The course sounded interesting to me.	13.6%	27.6%	0.0%	15.7%

### 4. How would you rate the overall quality of instruction in this course?

	Response by Course Level			
	Lower	Upper	Grad	Total
Excellent (6)	50.3%	37.9%	0.0%	48.5%
Very Good (5)	27.8%	31.0%	0.0%	28.3%
Good (4)	16.6%	17.2%	0.0%	16.7%
Fair (3)	4.1%	10.3%	0.0%	5.1%
Poor (2)	0.6%	0.0%	0.0%	0.5%
Unsatisfactory (1)	0.6%	3.5%	0.0%	1.0%
Mean	5.2	4.9	.	5.2
Median	6	5	.	5
Count	169	29	0	198



### 5. How would you rate your professor's specific contribution to you learning in this course?

	Response by Course Level			
	Lower	Upper	Grad	Total
Excellent (6)	53.6%	44.8%	0.0%	52.3%
Very Good (5)	25.6%	24.1%	0.0%	25.4%
Good (4)	15.5%	27.6%	0.0%	17.3%
Fair (3)	3.6%	0.0%	0.0%	3.1%
Poor (2)	1.2%	0.0%	0.0%	1.0%
Unsatisfactory (1)	0.6%	3.5%	0.0%	1.0%
Mean	5.2	5.0	.	5.2
Median	6	5	.	6
Count	168	29	0	197

