

## Student Opinion of Teaching Effectiveness (SOTE)- College of Arts & Letters Fall 2019 Term Summary

### 1. Rate your interest in the subject matter of this course before you took the class.

	Response by Course Level			
	Lower	Upper	Grad	Total
Very High (1)	24.5%	35.4%	53.2%	29.4%
High (2)	27.0%	26.1%	19.2%	26.6%
Moderately High (3)	21.2%	18.2%	11.7%	19.8%
Moderately Low (4)	11.2%	9.2%	4.3%	10.2%
Low (5)	11.9%	7.8%	7.5%	10.1%
Very Low (6)	4.3%	3.3%	4.3%	3.9%
Mean	2.7	2.4	2.1	2.6
Median	2	2	1	2
Count	4498	3356	94	7948

### 2. How many class sessions did you attend?

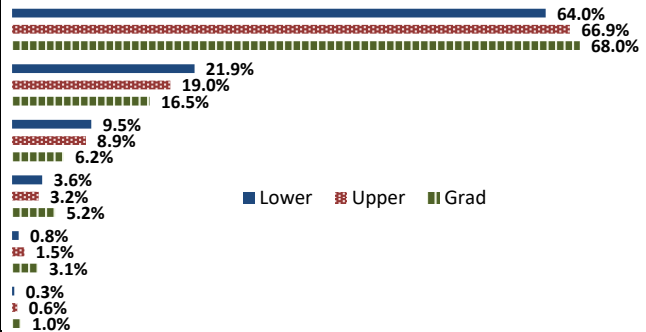
	Response by Course Level			
	Lower	Upper	Grad	Total
All (1)	57.4%	51.8%	60.4%	55.1%
Almost All (2)	39.4%	45.0%	38.5%	41.8%
More than Half (3)	2.8%	2.9%	1.0%	2.8%
Less than Half (4)	0.4%	0.3%	0.0%	0.4%
Mean	1.5	1.5	1.4	1.5
Median	1	1	1	1
Count	4525	3408	96	8029

### 3. Why did you take this course? Choose all that apply.

	Response by Course Level			
	Lower	Upper	Grad	Total
3a. The course fulfills a general education requirement.	67.4%	46.1%	40.0%	58.3%
3b. The course fulfills a requirement in my major.	24.2%	57.6%	73.0%	38.6%
3c. I have enjoyed the professor's class(es) in the past.	3.0%	9.5%	21.0%	5.9%
3d. The course will improve job/career opportunities.	14.5%	17.0%	31.0%	15.7%
3e. The course sounded interesting to me.	24.5%	30.6%	34.0%	27.1%

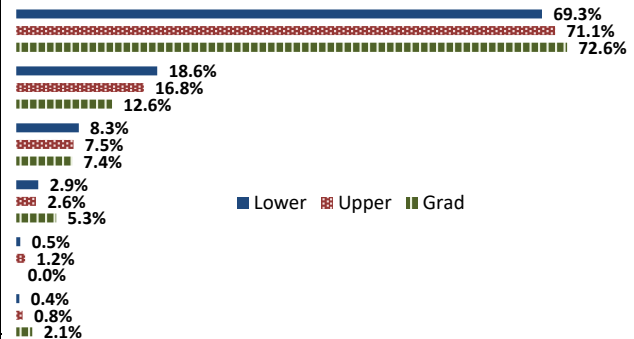
### 4. How would you rate the overall quality of instruction in this course?

	Response by Course Level			
	Lower	Upper	Grad	Total
Excellent (6)	64.0%	66.9%	68.0%	65.2%
Very Good (5)	21.9%	19.0%	16.5%	20.6%
Good (4)	9.5%	8.9%	6.2%	9.2%
Fair (3)	3.6%	3.2%	5.2%	3.5%
Poor (2)	0.8%	1.5%	3.1%	1.1%
Unsatisfactory (1)	0.3%	0.6%	1.0%	0.4%
Mean	5.4	5.4	5.4	5.4
Median	6	6	6	6
Count	4535	3311	97	7943



### 5. How would you rate your professor's specific contribution to you learning in this course?

	Response by Course Level			
	Lower	Upper	Grad	Total
Excellent (6)	69.3%	71.1%	72.6%	70.1%
Very Good (5)	18.6%	16.8%	12.6%	17.8%
Good (4)	8.3%	7.5%	7.4%	7.9%
Fair (3)	2.9%	2.6%	5.3%	2.8%
Poor (2)	0.5%	1.2%	0.0%	0.8%
Unsatisfactory (1)	0.4%	0.8%	2.1%	0.6%
Mean	5.5	5.5	5.5	5.5
Median	6	6	6	6
Count	4463	3368	95	7926



# Student Opinion of Teaching Effectiveness (SOTE)- College of Business and Public Administration Fall 2019 2019 Term Summary

## 1. Rate your interest in the subject matter of this course before you took the class.

	Response by Course Level			
	Lower	Upper	Grad	Total
Very High (1)	21.7%	33.2%	36.2%	31.1%
High (2)	25.7%	29.4%	25.0%	28.0%
Moderately High (3)	25.7%	19.3%	21.0%	20.9%
Moderately Low (4)	10.6%	8.3%	9.0%	8.9%
Low (5)	12.3%	7.2%	6.0%	8.2%
Very Low (6)	4.1%	2.6%	2.8%	2.9%
Mean	2.8	2.3	2.3	2.4
Median	3	2	2	2
Count	1071	3268	633	4972

## 2. How many class sessions did you attend?

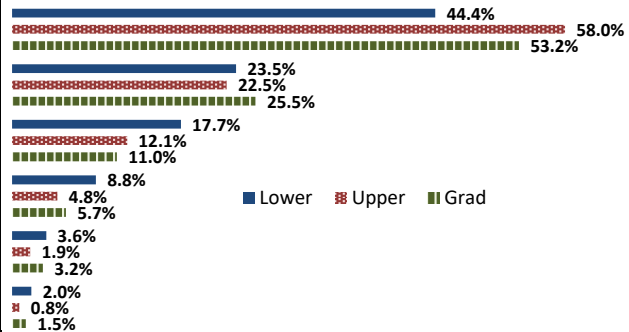
	Response by Course Level			
	Lower	Upper	Grad	Total
All (1)	62.8%	65.1%	74.8%	65.9%
Almost All (2)	32.1%	32.9%	22.1%	31.3%
More than Half (3)	3.8%	1.8%	2.6%	2.3%
Less than Half (4)	1.3%	0.2%	0.5%	0.5%
Mean	1.4	1.4	1.3	1.4
Median	1	1	1	1
Count	1080	3293	644	5017

## 3. Why did you take this course? Choose all that apply.

	Response by Course Level			
	Lower	Upper	Grad	Total
3a. The course fulfills a general education requirement.	44.2%	27.6%	40.2%	32.8%
3b. The course fulfills a requirement in my major.	61.8%	77.5%	74.3%	73.8%
3c. I have enjoyed the professor's class(es) in the past.	1.4%	6.7%	5.0%	5.4%
3d. The course will improve job/career opportunities.	20.1%	25.8%	32.2%	25.4%
3e. The course sounded interesting to me.	19.6%	17.6%	21.2%	18.5%

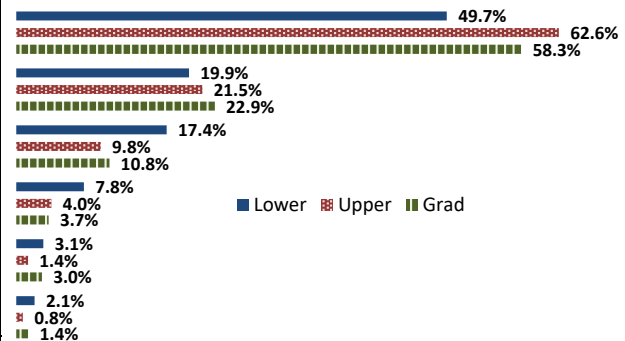
## 4. How would you rate the overall quality of instruction in this course?

	Response by Course Level			
	Lower	Upper	Grad	Total
Excellent (6)	44.4%	58.0%	53.2%	54.5%
Very Good (5)	23.5%	22.5%	25.5%	23.1%
Good (4)	17.7%	12.1%	11.0%	13.1%
Fair (3)	8.8%	4.8%	5.7%	5.7%
Poor (2)	3.6%	1.9%	3.2%	2.4%
Unsatisfactory (1)	2.0%	0.8%	1.5%	1.1%
Mean	4.9	5.3	5.2	5.2
Median	5	6	6	6
Count	1034	3239	619	4892



## 5. How would you rate your professor's specific contribution to you learning in this course?

	Response by Course Level			
	Lower	Upper	Grad	Total
Excellent (6)	49.7%	62.6%	58.3%	59.3%
Very Good (5)	19.9%	21.5%	22.9%	21.3%
Good (4)	17.4%	9.8%	10.8%	11.5%
Fair (3)	7.8%	4.0%	3.7%	4.8%
Poor (2)	3.1%	1.4%	3.0%	2.0%
Unsatisfactory (1)	2.1%	0.8%	1.4%	1.1%
Mean	5.0	5.4	5.3	5.3
Median	5	6	6	6
Count	1089	3292	642	5023



## Student Opinion of Teaching Effectiveness (SOTE)- College of Education Fall 2019 Term Summary

### 1. Rate your interest in the subject matter of this course before you took the class.

	Response by Course Level			
	Lower	Upper	Grad	Total
Very High (1)	38.7%	36.5%	49.9%	42.0%
High (2)	34.7%	31.7%	22.9%	28.3%
Moderately High (3)	10.7%	19.6%	15.6%	17.5%
Moderately Low (4)	12.0%	6.5%	5.8%	6.5%
Low (5)	1.3%	3.8%	4.5%	4.0%
Very Low (6)	2.7%	2.0%	1.3%	1.7%
Mean	2.1	2.2	2.0	2.1
Median	2	2	2	2
Count	75	817	603	1495

### 2. How many class sessions did you attend?

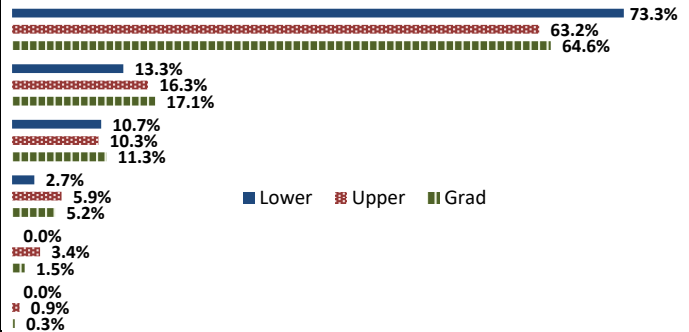
	Response by Course Level			
	Lower	Upper	Grad	Total
All (1)	69.9%	82.6%	85.1%	82.9%
Almost All (2)	30.1%	16.2%	14.1%	16.1%
More than Half (3)	0.0%	0.5%	0.7%	0.5%
Less than Half (4)	0.0%	0.7%	0.2%	0.5%
Mean	1.3	1.2	1.2	1.2
Median	1	1	1	1
Count	83	839	603	1525

### 3. Why did you take this course? Choose all that apply.

	Response by Course Level			
	Lower	Upper	Grad	Total
3a. The course fulfills a general education requirement.	39.3%	27.2%	25.6%	27.3%
3b. The course fulfills a requirement in my major.	75.3%	68.9%	85.0%	75.6%
3c. I have enjoyed the professor's class(es) in the past.	1.1%	3.1%	13.7%	7.2%
3d. The course will improve job/career opportunities.	24.7%	35.3%	33.2%	33.9%
3e. The course sounded interesting to me.	23.6%	13.1%	17.6%	15.4%

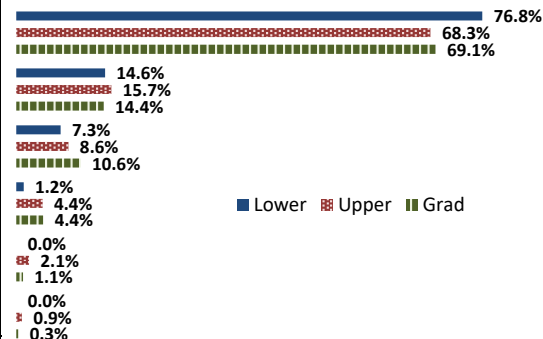
### 4. How would you rate the overall quality of instruction in this course?

	Response by Course Level			
	Lower	Upper	Grad	Total
Excellent (6)	73.3%	63.2%	64.6%	64.3%
Very Good (5)	13.3%	16.3%	17.1%	16.5%
Good (4)	10.7%	10.3%	11.3%	10.8%
Fair (3)	2.7%	5.9%	5.2%	5.5%
Poor (2)	0.0%	3.4%	1.5%	2.4%
Unsatisfactory (1)	0.0%	0.9%	0.3%	0.6%
Mean	5.6	5.3	5.4	5.3
Median	6	6	6	6
Count	75	774	601	1450



### 5. How would you rate your professor's specific contribution to your learning in this course?

	Response by Course Level			
	Lower	Upper	Grad	Total
Excellent (6)	76.8%	68.3%	69.1%	69.1%
Very Good (5)	14.6%	15.7%	14.4%	15.1%
Good (4)	7.3%	8.6%	10.6%	9.4%
Fair (3)	1.2%	4.4%	4.4%	4.2%
Poor (2)	0.0%	2.1%	1.1%	1.6%
Unsatisfactory (1)	0.0%	0.9%	0.3%	0.6%
Mean	5.7	5.4	5.5	5.4
Median	6	6	6	6
Count	82	848	631	1561



## Student Opinion of Teaching Effectiveness (SOTE)- College of Natural Sciences Fall 2019 2019 Term Summary

### 1. Rate your interest in the subject matter of this course before you took the class.

	Response by Course Level			
	Lower	Upper	Grad	Total
Very High (1)	20.2%	35.0%	41.9%	26.5%
High (2)	26.1%	28.3%	37.1%	27.1%
Moderately High (3)	22.6%	19.3%	15.3%	21.2%
Moderately Low (4)	11.9%	8.1%	1.6%	10.3%
Low (5)	13.5%	6.1%	4.0%	10.4%
Very Low (6)	5.6%	3.2%	0.0%	4.6%
Mean	2.9	2.3	1.9	2.6
Median	3	2	2	2
Count	7196	5072	124	12392

### 2. How many class sessions did you attend?

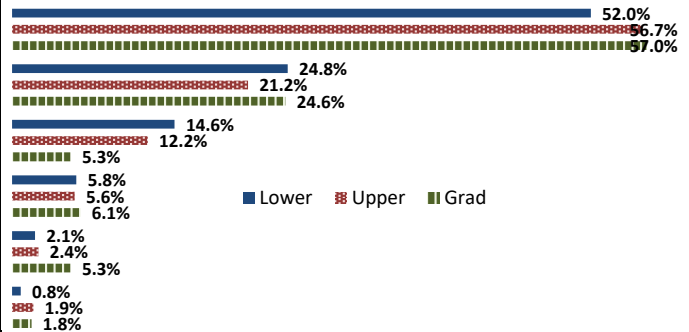
	Response by Course Level			
	Lower	Upper	Grad	Total
All (1)	71.3%	67.0%	88.1%	69.7%
Almost All (2)	26.4%	30.4%	11.9%	27.9%
More than Half (3)	1.8%	2.2%	0.0%	1.9%
Less than Half (4)	0.5%	0.5%	0.0%	0.5%
Mean	1.3	1.4	1.1	1.3
Median	1	1	1	1
Count	7248	5115	118	12481

### 3. Why did you take this course? Choose all that apply.

	Response by Course Level			
	Lower	Upper	Grad	Total
3a. The course fulfills a general education requirement.	60.0%	32.9%	29.7%	48.5%
3b. The course fulfills a requirement in my major.	49.9%	71.3%	81.3%	59.0%
3c. I have enjoyed the professor's class(es) in the past.	2.3%	8.9%	18.0%	5.2%
3d. The course will improve job/career opportunities.	10.7%	19.0%	21.9%	14.3%
3e. The course sounded interesting to me.	12.3%	18.9%	13.3%	15.0%

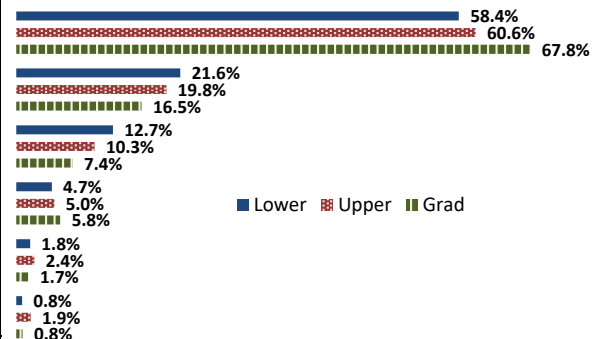
### 4. How would you rate the overall quality of instruction in this course?

	Response by Course Level			
	Lower	Upper	Grad	Total
Excellent (6)	52.0%	56.7%	57.0%	54.0%
Very Good (5)	24.8%	21.2%	24.6%	23.3%
Good (4)	14.6%	12.2%	5.3%	13.5%
Fair (3)	5.8%	5.6%	6.1%	5.7%
Poor (2)	2.1%	2.4%	5.3%	2.2%
Unsatisfactory (1)	0.8%	1.9%	1.8%	1.3%
Mean	5.2	5.2	5.2	5.2
Median	6	6	6	6
Count	6915	4895	114	11924



### 5. How would you rate your professor's specific contribution to you learning in this course?

	Response by Course Level			
	Lower	Upper	Grad	Total
Excellent (6)	58.4%	60.6%	67.8%	59.4%
Very Good (5)	21.6%	19.8%	16.5%	20.8%
Good (4)	12.7%	10.3%	7.4%	11.7%
Fair (3)	4.7%	5.0%	5.8%	4.8%
Poor (2)	1.8%	2.4%	1.7%	2.1%
Unsatisfactory (1)	0.8%	1.9%	0.8%	1.2%
Mean	5.3	5.3	5.4	5.3
Median	6	6	6	6
Count	7224	5120	121	12465



# Student Opinion of Teaching Effectiveness (SOTE)- College of Social and Behavioral Sciences Fall 2019 Term Summary

## 1. Rate your interest in the subject matter of this course before you took the class.

	Response by Course Level			
	Lower	Upper	Grad	Total
Very High (1)	21.1%	33.2%	40.8%	28.9%
High (2)	29.7%	28.0%	26.7%	28.6%
Moderately High (3)	22.3%	19.3%	14.6%	20.2%
Moderately Low (4)	10.8%	7.9%	9.7%	9.1%
Low (5)	12.1%	8.0%	4.6%	9.4%
Very Low (6)	4.1%	3.7%	3.6%	3.8%
Mean	2.8	2.4	2.2	2.5
Median	2	2	2	2
Count	3650	5584	390	9624

## 2. How many class sessions did you attend?

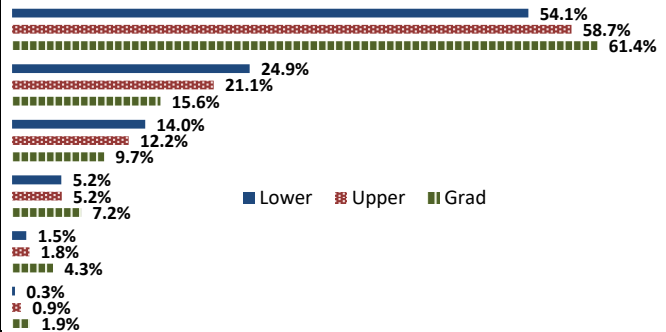
	Response by Course Level			
	Lower	Upper	Grad	Total
All (1)	62.1%	55.4%	67.5%	58.5%
Almost All (2)	35.4%	41.3%	32.0%	38.7%
More than Half (3)	2.0%	2.8%	0.5%	2.4%
Less than Half (4)	0.6%	0.4%	0.0%	0.5%
Mean	1.4	1.5	1.3	1.4
Median	1	1	1	1
Count	3667	5635	397	9699

## 3. Why did you take this course? Choose all that apply.

	Response by Course Level			
	Lower	Upper	Grad	Total
3a. The course fulfills a general education requirement.	71.2%	35.4%	31.7%	48.9%
3b. The course fulfills a requirement in my major.	34.3%	69.5%	86.4%	56.8%
3c. I have enjoyed the professor's class(es) in the past.	2.4%	9.5%	14.8%	7.1%
3d. The course will improve job/career opportunities.	10.1%	16.9%	35.6%	15.1%
3e. The course sounded interesting to me.	23.3%	31.7%	23.6%	28.2%

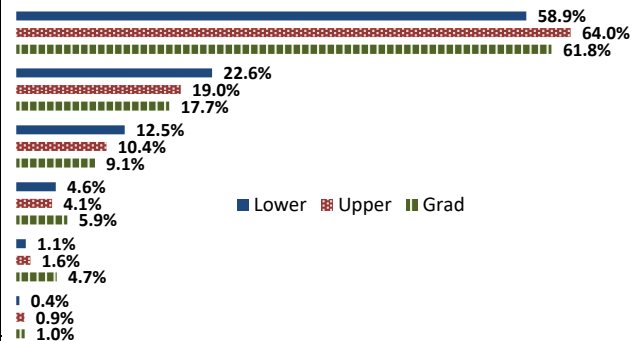
## 4. How would you rate the overall quality of instruction in this course?

	Response by Course Level			
	Lower	Upper	Grad	Total
Excellent (6)	54.1%	58.7%	61.4%	57.1%
Very Good (5)	24.9%	21.1%	15.6%	22.3%
Good (4)	14.0%	12.2%	9.7%	12.8%
Fair (3)	5.2%	5.2%	7.2%	5.3%
Poor (2)	1.5%	1.8%	4.3%	1.8%
Unsatisfactory (1)	0.3%	0.9%	1.9%	0.7%
Mean	5.2	5.3	5.2	5.3
Median	6	6	6	6
Count	3524	5453	373	9350



## 5. How would you rate your professor's specific contribution to your learning in this course?

	Response by Course Level			
	Lower	Upper	Grad	Total
Excellent (6)	58.9%	64.0%	61.8%	61.9%
Very Good (5)	22.6%	19.0%	17.7%	20.3%
Good (4)	12.5%	10.4%	9.1%	11.2%
Fair (3)	4.6%	4.1%	5.9%	4.4%
Poor (2)	1.1%	1.6%	4.7%	1.6%
Unsatisfactory (1)	0.4%	0.9%	1.0%	0.7%
Mean	5.3	5.4	5.2	5.3
Median	6	6	6	6
Count	3641	5578	408	9627



## Student Opinion of Teaching Effectiveness (SOTE)- College of University Studies Fall 2019 Term Summary

### 1. Rate your interest in the subject matter of this course before you took the class.

	Response by Course Level			
	Lower	Upper	Grad	Total
Very High (1)	43.8%	27.3%	0.0%	37.0%
High (2)	6.3%	18.2%	0.0%	11.1%
Moderately High (3)	18.8%	9.1%	0.0%	14.8%
Moderately Low (4)	25.0%	18.2%	0.0%	22.2%
Low (5)	0.0%	27.3%	0.0%	11.1%
Very Low (6)	6.3%	0.0%	0.0%	3.7%
Mean	2.5	3.0	.	2.7
Median	3	3	.	3
Count	16	11	0	27

### 2. How many class sessions did you attend?

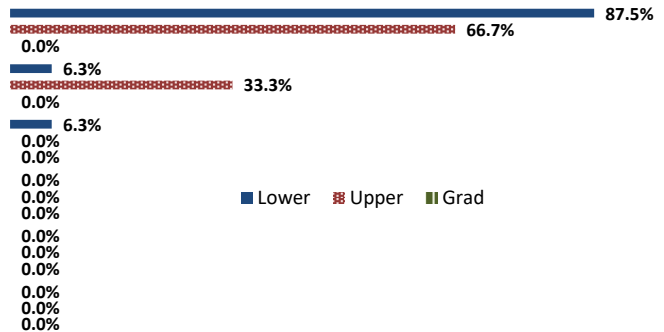
	Response by Course Level			
	Lower	Upper	Grad	Total
All (1)	37.5%	50.0%	0.0%	42.9%
Almost All (2)	56.3%	50.0%	0.0%	53.6%
More than Half (3)	6.3%	0.0%	0.0%	3.6%
Less than Half (4)	0.0%	0.0%	0.0%	0.0%
Mean	1.7	1.5	.	1.6
Median	2	2	.	2
Count	16	12	0	28

### 3. Why did you take this course? Choose all that apply.

	Response by Course Level			
	Lower	Upper	Grad	Total
3a. The course fulfills a general education requirement.	25.0%	71.4%	0.0%	46.7%
3b. The course fulfills a requirement in my major.	6.3%	21.4%	0.0%	13.3%
3c. I have enjoyed the professor's class(es) in the past.	0.0%	0.0%	0.0%	0.0%
3d. The course will improve job/career opportunities.	25.0%	21.4%	0.0%	23.3%
3e. The course sounded interesting to me.	18.8%	28.6%	0.0%	23.3%

### 4. How would you rate the overall quality of instruction in this course?

	Response by Course Level			
	Lower	Upper	Grad	Total
Excellent (6)	87.5%	66.7%	0.0%	78.6%
Very Good (5)	6.3%	33.3%	0.0%	17.9%
Good (4)	6.3%	0.0%	0.0%	3.6%
Fair (3)	0.0%	0.0%	0.0%	0.0%
Poor (2)	0.0%	0.0%	0.0%	0.0%
Unsatisfactory (1)	0.0%	0.0%	0.0%	0.0%
Mean	5.8	5.7	.	5.8
Median	6	6	.	6
Count	16	12	0	28



### 5. How would you rate your professor's specific contribution to your learning in this course?

	Response by Course Level			
	Lower	Upper	Grad	Total
Excellent (6)	80.0%	81.8%	0.0%	80.8%
Very Good (5)	13.3%	18.2%	0.0%	15.4%
Good (4)	6.7%	0.0%	0.0%	3.9%
Fair (3)	0.0%	0.0%	0.0%	0.0%
Poor (2)	0.0%	0.0%	0.0%	0.0%
Unsatisfactory (1)	0.0%	0.0%	0.0%	0.0%
Mean	5.7	5.8	.	5.8
Median	6	6	.	6
Count	15	11	0	26

