



CSUSB State of Assessment

For Departments
and Schools

September 23, 2020



CSUSB WE DEFINE THE *Future*

Overview

1. History of Assessment at CSUSB
2. Creating a Culture for Continuous Improvement
3. Outcomes Assessment
4. Campus Labs Tools to Support Assessment & Continuous Improvement
5. Discussion & Questions

Clare Weber, Ph.D.

Deputy Provost and Vice Provost for Academic Programs; WSCUC Accreditation Liaison Officer

Muriel C. Lopez-Wagner, Ph.D.

Chief Data Officer and Associate Vice President

Judy Sylva, Ph.D.

Professor; Faculty Director of Assessment for Academic Affairs

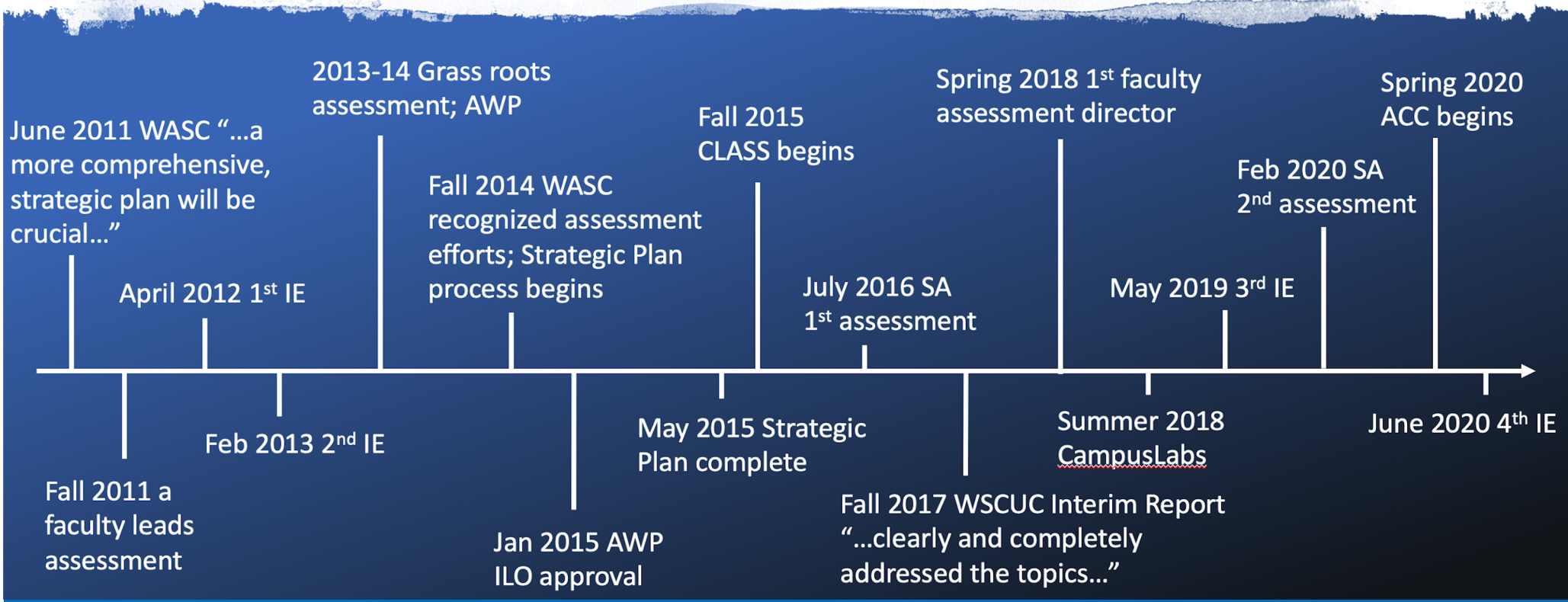
Jennifer Mersman, Ph.D.

Assessment and Research Officer

Pamela Moses, Ph.D.

Organizational Change Facilitator

History of Assessment at CSUSB

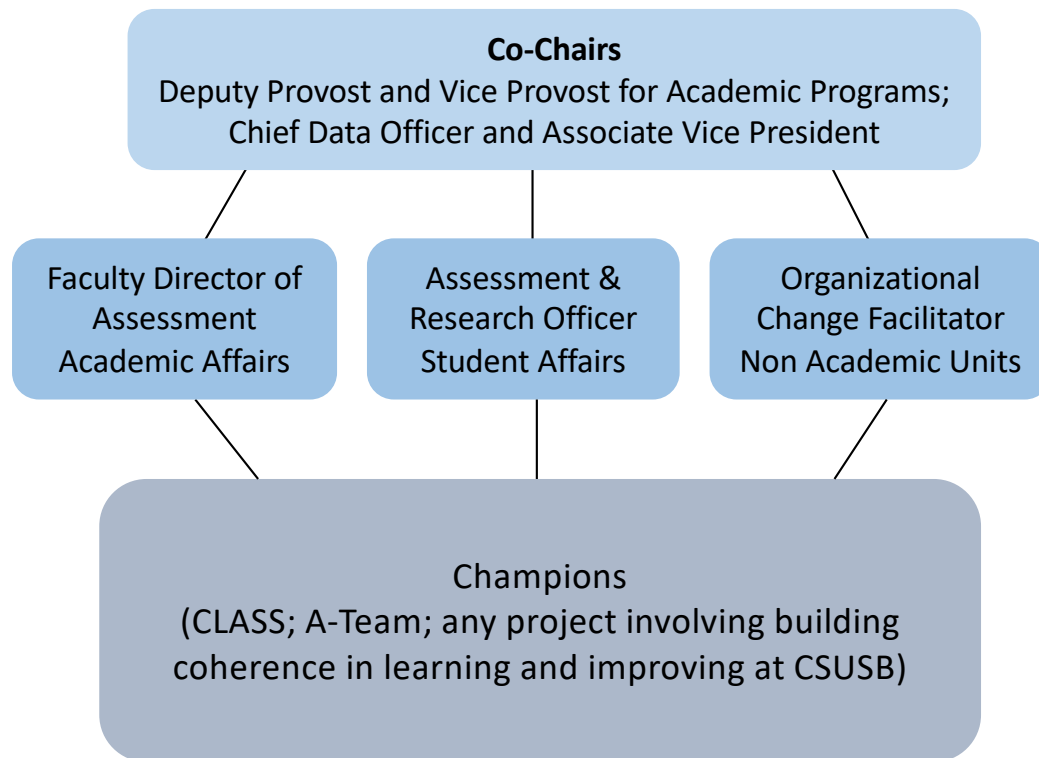


An
Organizational
Learning
Culture is
more than
evidenced-
focused





Assessment Capability Collaborative



CLASS

The Committee on Learning Assessment for Student Success (CLASS) has been established to support curricular and co-curricular units in the assessment of student learning outcomes to enhance student success. CLASS will coordinate assessment efforts of curricular and co-curricular units across the university. Members of CLASS represent their constituent curricular and co-curricular units.

College Assessment Coordinators support college, department, & program level assessment practices

2019-20 Highlights:

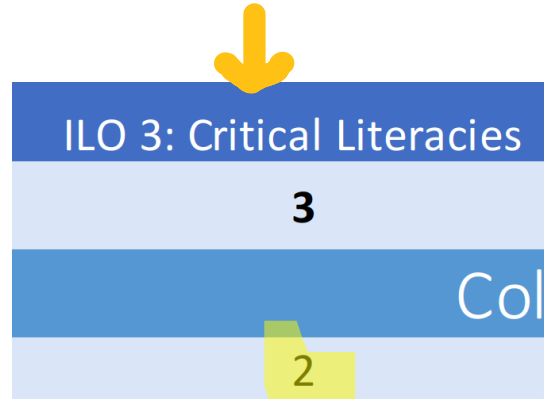
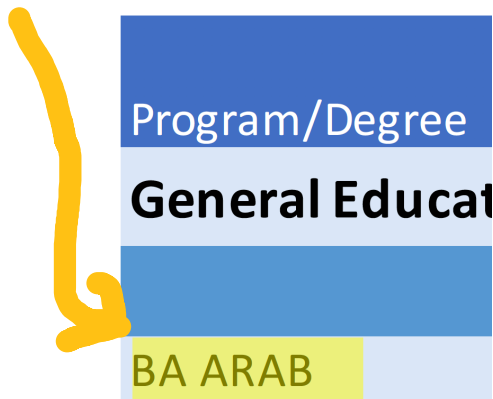
- *Training in Outcomes module of CL*
- *Program faculty completed IEEI fields in Planning (98% completed)*
- *Initial sampling of PLO and ILO alignment to draft ILO assessment plan*

California State University San Bernardino

Matrix of Alignment of Academic Program Learning Outcomes with Institutional Outcomes 2020-2021

Full text of ILO and PLO for each program listed attached

Program/Degree	ILO 1: Breadth of Knowledge	ILO 2: Depth of Knowledge	ILO 3: Critical Literacies	ILO 4: Ways of Reasoning & Inquiry	ILO 5: Creativity & Innovation	ILO 6: Integrative Learning	ILO 7: Engagement in Campus, Local, & Global Communities	ILO 8: Diversity & Inclusion
General Education	6		3	2		6	5	4; 8
College of Arts & Letters								
BA ARAB	2; 3	1; 2	2	4			1; 3; 5	1; 2; 5



Bachelor of Arts, Arabic Language, Literature, and Culture (BA ARAB) Program Learning Outcomes

2. Critical text analysis. Comprehend and analyze oral and written texts effectively and critically as socially and ideologically constructed and shaped by context so students can contribute to enriching their local communities and beyond

Proposed ILO Assessment Process

	2020/21	2021/22	2022/23	2023/24	2024/25	2025/26	2026/27	2027/28	2028/29	2029/30
7. Engagement in the Campus, Local, & Global Communities	collect	collect	analyze	recommend	implement	collect	collect	analyze	recommend	implement
8. Diversity & Inclusion	collect	collect	analyze	recommend	implement	collect	collect	analyze	recommend	implement
1. Breadth of Knowledge		collect	collect	analyze	recommend	implement	collect	collect	analyze	recommend
2. Depth of Knowledge		collect	collect	analyze	recommend	implement	collect	collect	analyze	recommend
3. Critical Literacies			collect	collect	analyze	recommend	implement	collect	collect	analyze
4. Ways of Reasoning & Inquiry			collect	collect	analyze	recommend	implement	collect	collect	analyze
5. Creativity & Innovation				collect	collect	analyze	recommend	implement	collect	collect
6. Integrative Learning				collect	collect	analyze	recommend	implement	collect	collect

Quarter-to-Semester (Q2S)

■ Curriculum

- Over 5,700 courses and 95 degree programs, 123 minors and certificates, and 18 credential programs were discussed, reviewed, and updated as a part of the curriculum process.
- Q2S post curriculum requirements included an assessment plan with the following components:
 - Program learning outcomes
 - Curriculum alignment to PLOs (i.e., curriculum map)
 - Description of methods and procedures to assess and review each PLO
 - Time plan – the rotation plan for assessing each PLO over 3-4 years and a description of when and how you will “close the loop” or your findings

Timeframe for Outcomes Assessment



- *Feedback from CLASS on Q2S assessment plan*
- *Map PLO to ILO*
- *Determine cycles & measures for PLO assessment*
- *Implement and refine semester curriculum*
- *Refine and align program level assessment plans with ILO cycle*
- *Launch first cycle of gathering, analyzing, & reflecting on outcome evidence*
- *Opportunity to leverage Outcomes, Baseline, & Planning modules*
- *Identify opportunities for improvement on PLO assessed*
- *Discuss report on initial PLO with program faculty, department, & Dean*
- *Share report with Academic Programs*

Communicating... Educating... Training

Cycle of Continuous Improvement



Insight

Data Analytics
Visualizations
Dashboards

Engage

Student Org Mgt
Experience Tracking
Guided Pathways

Baseline

Surveys
SRS
Rubrics

Outcomes

CLO, PLO, GLO, ILO
Progress Tracking
Aggregated Results

Planning

Reporting
Collaborative Workspace
Related Evidence

Compliance Assist

Customizable Templates
Accreditation
Program Review