

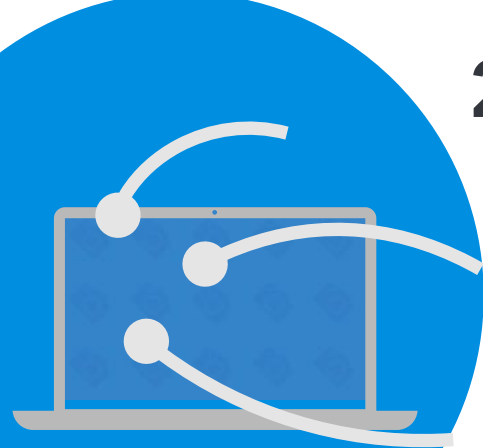
2021 CAL Online Bulletin #13

Faculty Office Hours:

CAL Online Faculty Office hours are held via [Zoom](#). Faculty can make appointments for **30 minute private help sessions** or you can use the **drop-in hours** to get help, chat, share ideas, etc. Click link for [Zoom](#) site or use **Meeting ID 909 537 7104 Password: Spring2021**. Visit [Cal Online Teaching Resources](#) for other bulletins, videos & resources.

Drop-In Faculty Hours : Monday 12-1

Private Help Sessions: Send an email to tnelson@csusb.edu

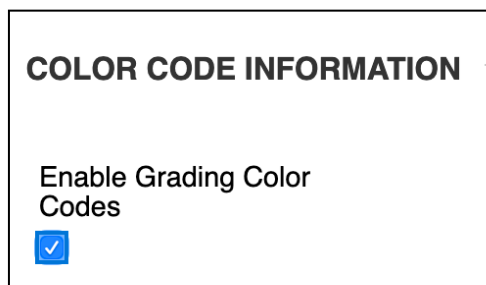


Color-Coding your Blackboard Gradebook

At this point in the semester, your Gradebook is packed with information. To help get a quick overview of how students are doing, try color-coding the information. The process is fairly simple. To begin, go to the Full Grade Center.

1. In the **Manage** menu, choose **Grading Color Codes**. (Figure 1)
2. Under **Color Code Information**, click the Enable **Grading Color Codes**

FIGURE 2



(Figure 2). This allows you to turn the color coding on & off.

3. You now have two different ways of coloring items. You can implement one or both. The first way of using color is to differentiate by **Grading Status** (Figure 3). Choose a background color for In Progress, Needs Grading and Exempt.
4. The second way of using color is to establish Criteria for performance based on **Grade Ranges**. Click the Add Criteria button to add your first grade range. (Figure 4)

FIGURE 4

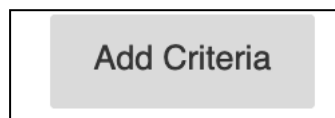


FIGURE 1

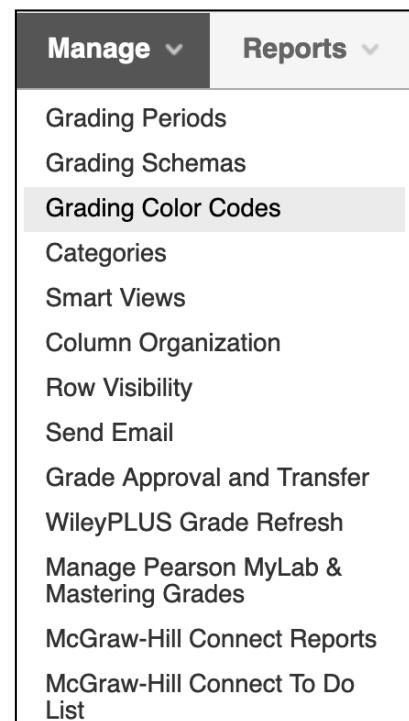
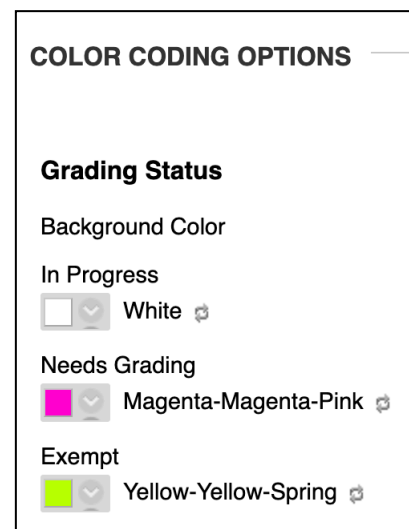


FIGURE 3



5. For each of the criteria, you can choose whether to add color to the BACKGROUND or change the color of the TEXT. You can also do both.

Here's a table with an example of a Background Color and a Text color.

Background Color is Yellow, Text is Black	Background Color is White, Text is Red
---	--

You establish the Criteria using percentages. Your Options are:

- More than or Equal To
- Less Than
- Between

You can set multiple criteria. In the example (Figure 5), I color-coded grades based on scores in the A range (89.4+%), B range (79.5-89.4%), C range (70-79.4%) and D/F range (less than 69.5%). Note that Blackboard shows you what your choices will look like (Indicator Preview— White text on the red background would have been a better choice than black text on a red background).

FIGURE 5

Grade Ranges

Criteria	Background Color	Text	Indicator Preview
More Than or Equal To ▾ 89.4 %	White	Black	Text Delete Criteria
Between ▾ 79.5 % and 89.4 %	Light Hard Spring	Black	Text Delete Criteria
Between ▾ 70 % and 79.4 %	Pale Dull Yellow	Black	Text Delete Criteria
Less Than ▾ 69.5 %	Red Red-Orange	Black	Text Delete Criteria

6. In **Figure 6**, you can see a portion of the grade book. Remember, the white background is a score in the A range. Now I can quickly see which assignments were more difficult for students, as well as how an individual student is doing (each row is a single student).

FIGURE 6

TUTORIAL: BEGINNING RESEARCHERS	QUIZ 1: SYLLABUS, CRITICAL INFORMATION LITERACY, AVOIDING PLAGIARISM	QUIZ 2: INTRODUCTION, SOLON	QUIZ 3: THE PERSIAN WARS, PERICLES & THE GOLDEN AGE	QUIZ 4: "FUNERAL ORATION"
10.00	17.00	11.50	11.08333	20.00
10.00	16.00	14.00	16.26666	18.00
--	19.00	18.00	19.00	18.00
10.00	18.00	16.50	20.00	18.00
10.00	18.00	20.00	15.16666	20.00
10.00	17.00	17.33333	20.00	20.00
10.00	17.00	17.16666	17.41666	20.00
10.00	20.00	17.00	20.00	20.00
10.00	20.00	18.00	19.00	20.00