

Comparing 3/26/2018 to 3/25/2019		28 Days to Spring 2019 Census on: 4/22/2019																											
		Resident						Non-Resident Foreign						Non-Resident USA						Total									
		2018	2019	Trgt	Trgt Δ	Trgt % Δ	N Δ	% Δ	2018	2019	Trgt	Trgt Δ	Trgt % Δ	N Δ	% Δ	2018	2019	Trgt	Trgt Δ	Trgt % Δ	N Δ	% Δ	2018	2019	Trgt	Trgt Δ	Trgt % Δ	N Δ	% Δ
<b>New Students</b>																													
FT Freshmen	0	1	4	-3	-75%	1	-	6	5	20	-15	-74%	-1	-17%	0	0	1	-1	-100%	0	-	6	6	24	-18	-75%	0	0%	
LD Transfer	0	0	2	-2	-100%	0	-	5	15	3	12	400%	10	200%	0	0	0	0	-	0	-	5	15	5	10	200%	10	200%	
UD Transfer	2	10	7	3	43%	8	400%	10	7	18	-11	-61%	-3	-30%	0	1	0	1	-	1	-	12	18	25	-7	-28%	6	50%	
PostBac	2	1	0	1	-	-1	-50%	0	0	2	-2	-100%	0	-	0	0	0	0	-100%	0	-	2	1	2	-1	-50%	-1	-50%	
PostBac Cr	7	9	19	-10	-53%	2	29%	0	0	0	0	-	0	-	0	0	0	0	-	0	-	7	9	19	-10	-53%	2	29%	
Masters	63	65	56	9	16%	2	3%	5	10	23	-13	-57%	5	100%	0	0	1	-1	-100%	0	-	68	75	80	-5	-6%	7	10%	
Doctoral	0	0	0	0	-	0	-	0	0	0	0	-	0	-	0	0	0	0	-	0	-	0	0	0	0	-	0	-	
Total	74	86	88	-2	-2%	12	16%	26	37	65	-28	-43%	11	42%	0	1	2	-1	-43%	1	-	100	124	155	-31	-20%	24	24%	
<b>Continue/Return</b>																													
Freshmen	2,726	2,742	2,552	190	7%	16	1%	51	28	70	-42	-60%	-23	-45%	5	2	2	0	-12%	-3	-60%	2,782	2,772	2,624	148	6%	-10	0%	
Sophomores	2,616	2,417	2,453	-36	-1%	-199	-8%	103	72	84	-12	-14%	-31	-30%	4	4	6	-2	-30%	0	0%	2,723	2,493	2,542	-49	-2%	-230	-8%	
Juniors	4,268	4,310	3,773	537	14%	42	1%	143	151	115	36	31%	8	6%	11	18	8	10	127%	7	64%	4,422	4,479	3,897	582	15%	57	1%	
Seniors	5,285	5,150	5,760	-610	-11%	-135	-3%	199	207	222	-15	-7%	8	4%	15	14	12	2	12%	-1	-7%	5,499	5,371	5,994	-623	-10%	-128	-2%	
PostBac	19	15	26	-11	-43%	-4	-21%	0	3	2	1	63%	2	200%	0	0	1	-1	-100%	0	-	20	18	29	-11	-39%	-2	-10%	
PostBac Cr	340	265	328	-63	-19%	-75	-22%	102	80	0	0	-	-22	-22%	14	18	9	9	98%	4	29%	340	265	328	-63	-19%	-75	-22%	
Masters	1,252	1,324	1,305	19	1%	72	6%	102	80	138	-58	-42%	-22	-22%	14	18	9	9	98%	4	29%	1,368	1,422	1,453	-31	-2%	54	4%	
Doctoral	51	65	60	5	8%	14	27%	0	1	0	1	135%	1	-	0	0	0	0	-	0	-	51	66	61	5	9%	15	29%	
Return fr Absence	6	3	8	-5	-63%	-3	-50%	0	0	3	-3	-100%	0	-	0	0	0	0	-	0	-	6	3	11	-5	-73%	-3	-50%	
Transitory	32	60	70	-10	-14%	28	88%	19	9	20	-11	-55%	-10	-53%	12	11	12	-1	-8%	-1	-8%	63	80	102	-22	-22%	17	27%	
Total	16,595	16,351	16,335	16	0%	-244	-1%	618	551	655	-104	-16%	-67	-11%	61	67	51	16	32%	6	10%	17,274	16,969	17,041	-72	0%	-305	-2%	
<b>Total Headcount</b>	<b>16,669</b>	<b>16,437</b>	<b>16,423</b>	<b>14</b>	<b>0%</b>	<b>-232</b>	<b>-1%</b>	<b>644</b>	<b>588</b>	<b>720</b>	<b>-132</b>	<b>-18%</b>	<b>-56</b>	<b>-9%</b>	<b>61</b>	<b>68</b>	<b>52</b>	<b>16</b>	<b>30%</b>	<b>7</b>	<b>11%</b>	<b>17,374</b>	<b>17,093</b>	<b>17,196</b>	<b>-103</b>	<b>-1%</b>	<b>-281</b>	<b>-2%</b>	
<b>FTES All Students</b>																													
FT Freshmen	0.00	0.53	3.54	-3.01	-85%	0.53	-	4.87	3.47	18.46	-14.99	-81%	-1.40	-29%	0.00	0.00	0.43	-0.43	-100%	0	-	4.87	4.00	22.43	-18.43	-82%	-0.87	-18%	
Freshmen	2,536.87	2,601.13	2,258.14	342.99	15%	64.26	3%	45.47	27.07	65.93	-38.86	-59%	-18.40	-40%	5.07	2.20	1.94	0.26	14%	-3	-57%	2,587.41	2,630.40	2,326.01	304.39	13%	42.99	2%	
Sophomores	2,424.07	2,227.07	2,168.80	58.27	3%	-197.00	-8%	96.40	68.53	82.73	-14.20	-17%	-27.87	-29%	3.13	4.07	4.84	-0.77	-16%	1	30%	2,523.60	2,299.67	2,256.37	43.30	2%	-223.93	-9%	
Juniors	3,969.80	4,030.46	3,341.82	688.64	21%	60.66	2%	142.80	140.00	113.46	26.54	23%	-2.80	-2%	10.27	17.86	6.78	11.08	163%	8	74%	4,122.87	4,188.32	3,462.06	726.26	21%	65.45	2%	
Seniors	4,704.40	4,538.93	5,093.87	-554.94	-11%	-165.47	-4%	190.46	187.73	224.25	-36.52	-16%	-2.73	-1%	13.73	11.80	10.65	1.15	11%	-2	-14%	4,908.59	4,738.46	5,328.77	-590.31	-11%	-170.13	-3%	
PostBac	12.60	9.20	23.38	-14.18	-61%	-3.40	-27%	0.93	2.40	3.41	-1.01	-30%	1.47	158%	0.00	0.00	1.29	-1.29	-100%	0	-	13.53	11.60	28.08	-16.48	-59%	-1.93	-14%	
PostBac Cr	292.94	248.40	307.14	-58.74	-19%	-44.54	-15%	0.00	0.00	0.00	0.00	-	0.00	-	0.00	0.00	0.00	0.00	-	0	-	292.94	248.40	307.14	-58.74	-19%	-44.54	-15%	
Masters	997.75	1,060.25	1,203.63	-143.38	-12%	62.50	6%	88.17	63.00	153.53	-90.53	-59%	-25.17	-29%	9.33	13.50	8.50	5.00	59%	4	45%	1,095.25	1,136.75	1,365.66	-228.91	-17%	41.50	4%	
Doctoral	34.50	39.67	53.14	-13.47	-25%	5.17	15%	0.00	0.75	0.40	0.35	87%	0.75	-	0.00	0.00	0.00	0.00	-	0	-	34.50	40.42	53.54	-13.12	-25%	5.92	17%	
Return fr Absence	3.67	2.48	7.07	-4.59	-65%	-1.19	-32%	0.00	0.00	2.83	-2.83	-100%	0.00	-	0.00	0.00	0.00	0.00	-	0	-	3.67	2.48	9.91	-7.43	-75%	-1.19	-32%	
Transitory	12.60	18.53	61.90	-43.37	-70%	5.93	47%	15.87	7.40	19.98	-12.58	-63%	-8.47	-53%	9.60	6.67	10.24	-3.57	-35%	-3	-31%	38.07	32.60	92.12	-59.52	-65%	-5.47	-14%	
Total FTES	14,989.20	14,776.65	14,522.42	254.23	2%	-212.55	-1%	584.97	500.35	684.99	-184.64	-27%	-84.62	-14%	51.13	56.10	44.67	11.43	26%	5	10%	15,625.30	15,333.10	15,252.08	81.02	1%	-292.20	-2%	
<b>Mean Unit Load</b>																													
FT Freshmen	-	7.95	13.26	-5.31	-40%	-	-	12.18	10.41	14.20	-3.79	-27%	-1.77	-14.5%	-	-	12.80	-	-	-	-	12.18	10.00	14.02	-4.02	-29%	-2.18	-17.9%	
Freshmen	13.94	14.16	13.26	0.90	7%	0.23	1.6%	12.92	13.50	14.38	-0.88	-6%	0.58	4.5%	12.94	10.64	12.80	-2.17	-17%	-2.31	-17.8%	13.90	14.14	13.30	0.84	6%	0.23	1.7%	
Sophomores	13.89	13.78	13.26	0.51	4%	-0.12	-0.8%	13.51	12.09	14.25	-2.16	-15%	-1.42	-10.5%	11.74	15.26	12.80	2.46	19%	3.53	30.0%	13.87	13.72	13.30	0.43	3%	-0.15	-1.1%	
Juniors	13.94	13.97	13.26	0.71	5%	0.03	0.2%	14.57	13.57	14.26	-0.68	-5%	-1.00	-6.8%	14.00	13.60	12.80	0.79	6%	-0.41	-2.9%	13.96	13.95	13.29	0.66	5%	-0.01	0.0%	
Seniors	13.34	13.21	13.26	-0.05	0%	-0.13	-1.0%	13.95	13.35	14.24	-0.89	-6%	-0.60	-4.3%	13.73	12.64	12.80	-0.16	-1%	-1.09	-7.9%	13.37	13.21	13.30	-0.09	-1%	-0.15	-1.1%	
PostBac	7.82	7.31	13.26	-5.96	-45%	-0.51	-6.6%	13.95	12.00	14.76	-2.76	-19%	-1.95	-14.0%	-	12	12.80	-0.80	-6%	-	-	8.00	7.88	13.35	-5.48	-41%	-0.12	-1.6%	
PostBac Cr	12.63	13.60	13.26	0.33	3%	0.97	7.6%	-	-	-	-	-	-	-	-	-	-	-	-	-	-	12.63	13.60	13.26	0.33	3%	0.97	7.6%	
Masters	9.10	9.16	10.61	-1.45	-14%	0.06	0.6%	9.89	8.40	11.40	-3.00	-26%	-1.49	-15.1%	8.00	9.00	10.24	-1.24	-12%	1.00	12.5%	9.15	9.11	10.69	-1.58	-15%	-0.04	-0.4%	
Doctoral	8.12	7.32	10.61	-3.29	-31%	-0.79	-9.8%	-	9.00	11.33	-2.33	-21%	-	-	-	-	-	-	-	-	-	8.12	7.35	10.62	-3.27	-31%	-0.77	-9.5%	
Total	13.30	13.28	13.03	0.25	2%	-0.02	-0.1%	13.21	12.44	13.62	-1.18	-9%	-0.78	-5.9%	12.11	11.78	12.32	-0.54	-4%	-0.33	-2.8%	13.29	13.25	13.06	0.19	1%	-0.05	-0.3%	
<b>FTES College of Disc</b>																													
A&L	3,277.33	3,099.52	-	-	-	-177.81	-5%	73.47	70.47	-	-	-	-3.00	-4%	10.53	13.87	-	-	-	3.34	32%	3,361.33	3,183.86	-	-	-	-177.47	-5%	
BPA	1,973.60	2,049.97	-	-	-	76.37	4%	261.07	240.27	-	-	-	-20.80	-8%	12.73	10.40	-	-	-	-2.33	-18%	2,247.40	2,300.64	-	-	-	53.24	2%	
Educ	829.03	766.32	-	-	-	-62.71	-8%	25.67	16.65	-	-	-	-9.02	-35%	2.33	3.40	-	-	-	1.07	46%	857.03	786.37	-	-	-	-70.66	-8%	
NSci	4,306.67	4,394.80	-	-	-	88.13	2%	136.80	110.90	-	-	-	-25.90	-19%	10.27	15.67	-	-	-	5.40	53%	4,453.74	4,521.37	-	-	-	67.63	2%	
SBS	4,568.75	4,417.80	-	-	-	-150.95	-3%	87.97	62.07	-	-	-	-25.90	-29%	15.27	12.77	-	-	-	-2.50	-16%	4,671.99	4,492.64	-	-	-	-179.35	-4%	
UNV	33.80	48.27	-	-	-	14.47	43%	0.00	0.00	-	-	-	0.00	-	0.00	0.00	-	-	-	0.00	-	33.80	48.27	-	-	-	14.47	43%	
Total	14,989.18	14,776.68	-	-	-	-212.50	-1%	584.98	500.36	-	-	-	-84.62	-14%	51.13	56.11	-	-	-	4.98	10%	15,625.29	15,333.15	-	-	-	-292.14	-2%	
<b>FTES</b>																													
College Year	Summer	Fall	Winter	Spring	CY	CO	up/down	Summer	Fall	Winter	Spring	CY	Summer	Fall	Winter	Spring	CY	Summer	Fall	Winter	Spring	CY	Summer	Fall	Winter	Spring	CY		
2013-14 Actual	1730.23	15277.16	14171.37	13155.70	1477																								

Units < 6.1	Resident	NR Foreign	NR USA	Total
Undergrad	389	27	5	421
PostB	13	0	0	13
PostB Cr	10	0	0	10
Masters	312	18	6	336
Doctoral	30	0	0	30
<b>Total</b>	<b>754</b>	<b>45</b>	<b>11</b>	<b>810</b>

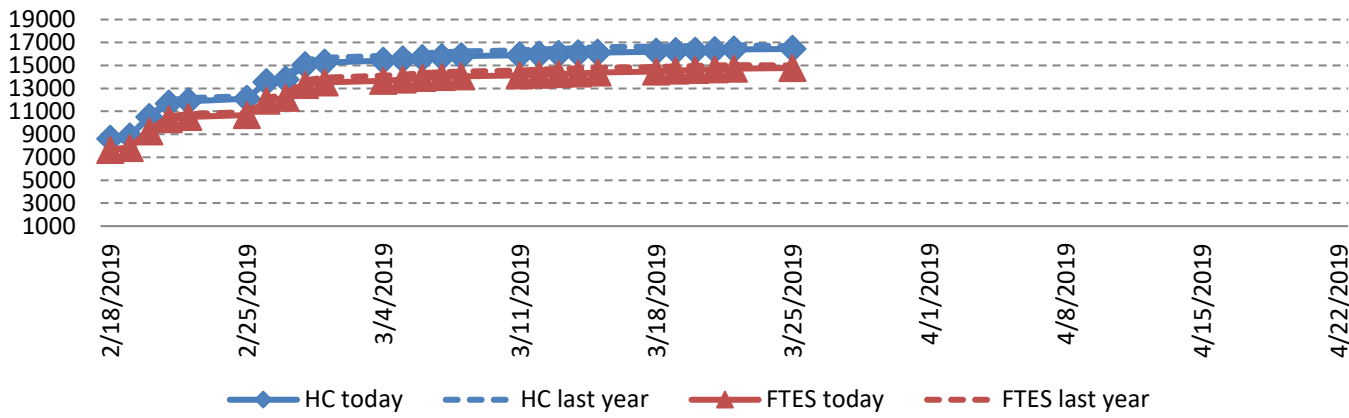
Units > 6.0	Resident	NR Foreign	NR USA	Total
Undergrad	14290	467	44	14801
PostB	16	3	1	20
PostB Cr	264	0	0	264
Masters	1078	72	12	1162
Doctoral	35	1	0	36
<b>Total</b>	<b>15683</b>	<b>543</b>	<b>57</b>	<b>16283</b>

3/25/2019

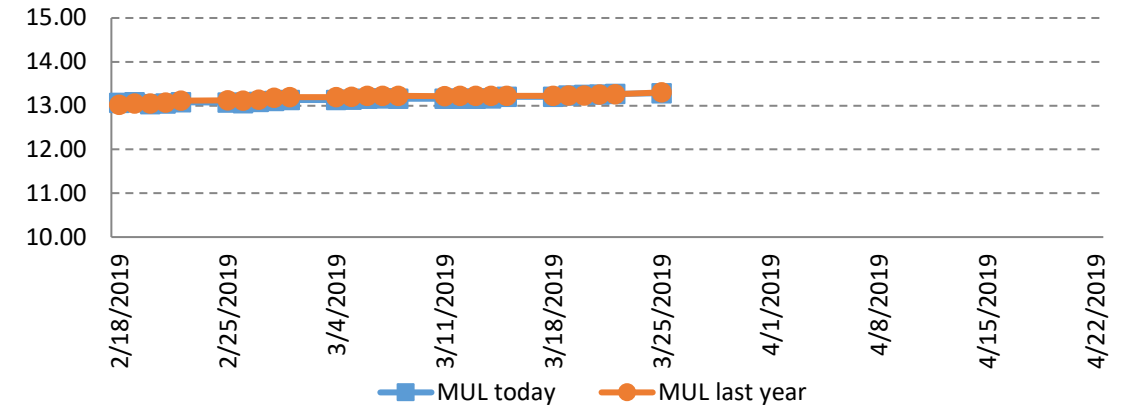
28 Days to Spring 2019 Census on:

4/22/2019

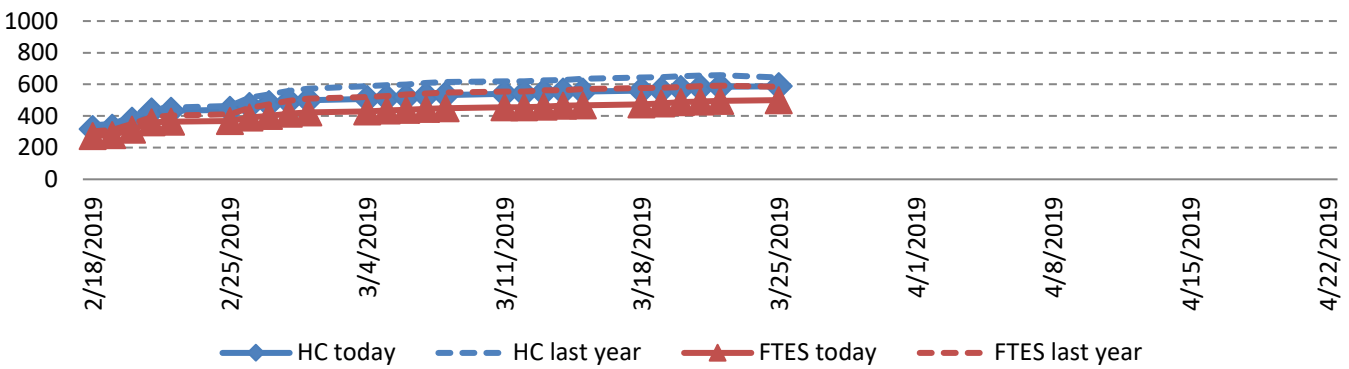
### Resident Headcount & FTE



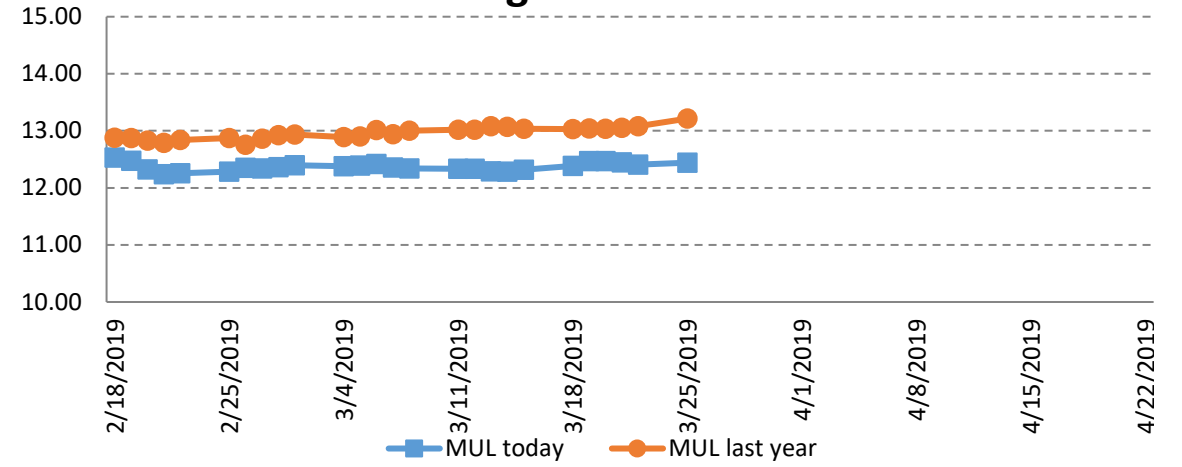
### Resident Mean Unit Load



### Non-Res Foreign Headcount & FTE



### Non-Res Foreign Mean Unit Load



Comparing 3/23/2018 to 3/22/2019		31 Days to Spring 2019 Census on: 4/22/2019																											
		Resident						Non-Resident Foreign						Non-Resident USA						Total									
		2018	2019	Trgt	Trgt Δ	Trgt % Δ	N Δ	% Δ	2018	2019	Trgt	Trgt Δ	Trgt % Δ	N Δ	% Δ	2018	2019	Trgt	Trgt Δ	Trgt % Δ	N Δ	% Δ	2018	2019	Trgt	Trgt Δ	Trgt % Δ	N Δ	% Δ
<b>New Students</b>																													
FT Freshmen	0	0	4	-4	-100%	0	-	5	5	20	-15	-74%	0	0%	0	0	1	-1	-100%	0	-	5	5	24	-19	-79%	0	0%	
LD Transfer	0	0	2	-2	-100%	0	-	5	15	3	12	400%	10	200%	0	0	0	0	-	0	-	5	15	5	10	200%	0	200%	
UD Transfer	2	10	7	3	43%	8	400%	9	7	18	-11	-61%	-2	-22%	0	1	0	1	-	1	-	11	18	25	-7	-28%	7	64%	
PostBac	2	1	0	1	-	-1	-50%	0	0	2	-2	-100%	0	-	0	0	0	0	-100%	0	-	2	1	2	-1	-50%	-1	-50%	
PostBac Cr	7	9	19	-10	-53%	2	29%	0	0	0	0	-	0	-	0	0	0	0	-	0	-	7	9	19	-10	-53%	2	29%	
Masters	64	65	56	9	16%	1	2%	4	9	23	-14	-61%	5	125%	0	0	1	-1	-100%	0	-	68	74	80	-6	-8%	6	9%	
Doctoral	0	0	0	0	-	0	-	0	0	0	0	-	0	-	0	0	0	0	-	0	-	0	0	0	0	-	0	-	
<b>Total</b>	<b>75</b>	<b>85</b>	<b>88</b>	<b>-3</b>	<b>-3%</b>	<b>10</b>	<b>13%</b>	<b>23</b>	<b>36</b>	<b>65</b>	<b>-29</b>	<b>-45%</b>	<b>13</b>	<b>57%</b>	<b>0</b>	<b>1</b>	<b>2</b>	<b>-1</b>	<b>-43%</b>	<b>1</b>	<b>-</b>	<b>98</b>	<b>122</b>	<b>155</b>	<b>-33</b>	<b>-21%</b>	<b>24</b>	<b>24%</b>	
<b>Continue/Return</b>																													
Freshmen	2,748	2,739	2,552	187	7%	-9	0%	56	27	70	-43	-61%	-29	-52%	5	2	2	0	-12%	-3	-60%	2,809	2,768	2,624	144	6%	-41	-1%	
Sophomores	2,630	2,407	2,453	-46	-2%	-223	-8%	103	76	84	-8	-10%	-27	-26%	4	4	6	-2	-30%	0	0%	2,737	2,487	2,542	-55	-2%	-250	-9%	
Juniors	4,296	4,302	3,773	529	14%	6	0%	144	148	115	33	28%	4	3%	11	18	8	10	127%	7	64%	4,451	4,468	3,897	571	15%	17	0%	
Seniors	5,311	5,132	5,760	-628	-11%	-179	-3%	206	206	222	-16	-7%	0	0%	15	14	12	2	12%	-1	-7%	5,532	5,352	5,994	-642	-11%	-180	-3%	
PostBac	19	15	26	-11	-43%	-4	-21%	0	3	2	0	63%	2	200%	0	0	1	-1	-100%	0	-	20	18	29	-11	-39%	-2	-10%	
PostBac Cr	343	264	328	-64	-20%	-79	-23%	0	0	0	0	-	0	-	0	0	0	0	-	0	-	343	264	328	-64	-20%	-79	-23%	
Masters	1,256	1,315	1,305	10	1%	59	5%	105	79	138	-59	-43%	-26	-25%	14	17	9	8	87%	3	21%	1,375	1,411	1,453	-42	-3%	36	3%	
Doctoral	51	65	60	5	8%	14	27%	0	1	0	1	135%	1	-	0	0	0	0	-	0	-	51	66	61	5	9%	15	29%	
Return fr Absence	5	3	8	-5	-63%	-2	-40%	1	0	3	-3	-100%	-1	-100%	0	0	0	0	-	0	-	6	3	11	-8	-73%	-3	-50%	
Transitory	33	60	70	-10	-14%	27	82%	19	9	20	-11	-55%	-10	-53%	12	11	12	-1	-8%	-1	-8%	64	80	102	-22	-22%	16	25%	
<b>Total</b>	<b>16,692</b>	<b>16,302</b>	<b>16,335</b>	<b>-33</b>	<b>0%</b>	<b>-390</b>	<b>-2%</b>	<b>635</b>	<b>549</b>	<b>655</b>	<b>-106</b>	<b>-16%</b>	<b>-86</b>	<b>-14%</b>	<b>61</b>	<b>66</b>	<b>51</b>	<b>15</b>	<b>30%</b>	<b>5</b>	<b>8%</b>	<b>17,388</b>	<b>16,917</b>	<b>17,041</b>	<b>-124</b>	<b>-1%</b>	<b>-471</b>	<b>-3%</b>	
<b>Total Headcount</b>	<b>16,767</b>	<b>16,387</b>	<b>16,423</b>	<b>-36</b>	<b>0%</b>	<b>-380</b>	<b>-2%</b>	<b>658</b>	<b>585</b>	<b>720</b>	<b>-135</b>	<b>-19%</b>	<b>-73</b>	<b>-11%</b>	<b>61</b>	<b>67</b>	<b>52</b>	<b>15</b>	<b>28%</b>	<b>6</b>	<b>10%</b>	<b>17,486</b>	<b>17,039</b>	<b>17,196</b>	<b>-157</b>	<b>-1%</b>	<b>-447</b>	<b>-3%</b>	
<b>FTES All Students</b>																													
FT Freshmen	0.00	0.00	3.54	-3.54	-100%	0.00	-	4.07	3.20	18.46	-15.26	-83%	-0.87	-21%	0.00	0.00	0.43	-0.43	-100%	0	-	4.07	3.20	22.43	-19.23	-86%	-0.87	-21%	
Freshmen	2,553.67	2,595.93	2,258.14	337.79	15%	42.26	2%	48.60	26.94	65.93	-38.99	-59%	-21.66	-45%	5.07	2.20	1.94	0.26	14%	-3	-57%	2,607.34	2,625.07	2,326.01	299.06	13%	17.73	1%	
Sophomores	2,426.80	2,215.27	2,168.80	46.47	2%	-211.53	-9%	93.93	72.00	82.73	-10.73	-13%	-21.93	-23%	3.13	4.07	4.84	-0.77	-16%	1	30%	2,523.86	2,291.34	2,256.37	34.97	2%	-232.52	-9%	
Juniors	3,981.00	4,013.73	3,341.82	671.91	20%	32.73	1%	141.60	136.60	113.46	23.14	20%	-5.00	-4%	10.27	17.86	6.78	11.08	163%	8	74%	4,132.87	4,168.19	3,462.06	706.13	20%	35.32	1%	
Seniors	4,709.07	4,520.13	5,093.87	-573.74	-11%	-188.94	-4%	196.86	185.47	224.25	-38.78	-17%	-11.39	-6%	13.73	11.80	10.65	1.15	11%	-2	-14%	4,919.66	4,717.40	5,328.77	-611.37	-11%	-202.26	-4%	
PostBac	12.60	9.20	23.38	-14.18	-61%	-3.40	-27%	0.93	2.40	3.41	-1.01	-30%	1.47	158%	0.00	0.00	1.29	-1.29	-100%	0	-	13.53	11.60	28.08	-16.48	-59%	-1.93	-14%	
PostBac Cr	296.73	246.00	307.14	-61.14	-20%	-50.73	-17%	0.00	0.00	0.00	0.00	-	0.00	-	0.00	0.00	0.00	0.00	-	0	-	296.73	246.00	307.14	-61.14	-20%	-50.73	-17%	
Masters	997.67	1,050.34	1,203.63	-153.29	-13%	52.67	5%	89.50	61.50	153.53	-92.03	-60%	-28.00	-31%	9.33	13.17	8.50	4.67	55%	4	41%	1,096.50	1,125.01	1,365.66	-240.65	-18%	28.51	3%	
Doctoral	34.50	39.67	53.14	-13.47	-25%	5.17	15%	0.00	0.75	0.40	0.35	87%	0.75	-	0.00	0.00	0.00	0.00	-	0	-	34.50	40.42	53.54	-13.12	-25%	5.92	17%	
Return fr Absence	3.53	2.48	7.07	-4.59	-65%	-1.05	-30%	0.27	0.00	2.83	-2.83	-100%	-0.27	-100%	0.00	0.00	0.00	0.00	-	0	-	3.80	2.48	9.91	-7.43	-75%	-1.32	-35%	
Transitory	12.60	18.53	61.90	-43.37	-70%	5.93	47%	15.87	7.40	19.98	-12.58	-63%	-8.47	-53%	9.60	6.80	10.24	-3.44	-34%	-3	-29%	38.07	32.73	92.12	-59.39	-64%	-5.34	-14%	
<b>Total FTES</b>	<b>15,028.17</b>	<b>14,711.28</b>	<b>14,522.42</b>	<b>188.86</b>	<b>1%</b>	<b>-316.89</b>	<b>-2%</b>	<b>591.63</b>	<b>496.26</b>	<b>684.99</b>	<b>-188.73</b>	<b>-28%</b>	<b>-95.37</b>	<b>-16%</b>	<b>51.13</b>	<b>55.90</b>	<b>44.67</b>	<b>11.23</b>	<b>25%</b>	<b>5</b>	<b>9%</b>	<b>15,670.93</b>	<b>15,263.44</b>	<b>15,252.08</b>	<b>11.36</b>	<b>0%</b>	<b>-407.49</b>	<b>-3%</b>	
<b>Mean Unit Load</b>																													
FT Freshmen	-	-	13.26	-	-	-	-	12.21	9.60	14.20	-4.60	-32%	-2.61	-21.4%	-	-	12.80	-	-	-	-	12.21	9.60	14.02	-4.42	-32%	-2.61	-21.4%	
Freshmen	13.92	14.15	13.26	0.88	7%	0.23	1.6%	12.68	13.81	14.38	-0.57	-4%	1.13	8.9%	12.94	10.81	12.80	-1.99	-16%	-2.13	-16.5%	13.88	14.13	13.30	0.83	6%	0.25	1.8%	
Sophomores	13.83	13.76	13.26	0.50	4%	-0.07	-0.5%	13.17	12.13	14.25	-2.12	-15%	-1.03	-7.8%	11.74	15.26	12.80	2.46	19%	3.53	30.0%	13.80	13.71	13.30	0.41	3%	-0.10	-0.7%	
Juniors	13.89	13.94	13.26	0.68	5%	0.05	0.4%	14.28	13.51	14.26	-0.75	-5%	-0.78	-5.4%	14.00	13.60	12.80	0.79	6%	-0.41	-2.9%	13.90	13.92	13.29	0.63	5%	0.02	0.2%	
Seniors	13.29	13.20	13.26	-0.06	0%	-0.09	-0.7%	14.00	13.25	14.24	-0.99	-7%	-0.76	-5.4%	13.73	12.64	12.80	-0.16	-1%	-1.09	-7.9%	13.32	13.20	13.30	-0.10	-1%	-0.12	-0.9%	
PostBac	7.83	7.31	13.26	-5.96	-45%	-0.52	-6.7%	13.95	12.00	14.76	-2.76	-19%	-1.95	-14.0%	-	12	12.80	-0.80	-6%	-	-	8.00	7.88	13.35	-5.48	-41%	-0.12	-1.5%	
PostBac Cr	12.72	13.52	13.26	0.25	2%	0.80	6.3%	-	-	-	-	-	-	-	-	-	-	-	-	-	-	12.72	13.52	13.26	0.25	2%	0.80	6.3%	
Masters	9.07	9.14	10.61	-1.48	-14%	0.07	0.7%	9.85	8.39	11.40	-3.01	-26%	-1.47	-14.9%	8.00	9.30	10.24	-0.95	-9%	1.30	16.2%	9.12	9.09	10.69	-1.60	-15%	-0.02	-0.3%	
Doctoral	8.12	7.32	10.61	-3.29	-31%	-0.79	-9.8%	-	9.00	11.33	-2.33	-21%	-	-	-	-	-	-	-	-	-	8.12	7.35	10.62	-3.27	-31%	-0.77	-9.5%	
<b>Total</b>	<b>13.26</b>	<b>13.27</b>	<b>13.03</b>	<b>0.23</b>	<b>2%</b>	<b>0.01</b>	<b>0.1%</b>	<b>13.08</b>	<b>12.41</b>	<b>13.62</b>	<b>-1.22</b>	<b>-9%</b>	<b>-0.67</b>	<b>-5.2%</b>	<b>12.11</b>	<b>11.93</b>	<b>12.32</b>	<b>-0.39</b>	<b>-3%</b>	<b>-0.19</b>	<b>-1.6%</b>	<b>13.25</b>	<b>13.23</b>	<b>13.06</b>	<b>0.18</b>	<b>1%</b>	<b>-0.02</b>	<b>-0.1%</b>	
<b>FTES College of Disc</b>																													
A&L	3,281.32	3,089.08	-	-	-	-192.24	-6%	74.27	69.67	-	-	-	-4.60	-6%	10.53	14.00	-	-	-	3.47	33%	3,366.12	3,172.75	-	-	-	-193.37	-6%	
BPA	1,990.40	2,039.17	-	-	-	48.77	2%	267.13	239.33	-	-	-	-27.80	-10%	12.73	10.40	-	-	-	-2.33	-18%	2,270.26	2,288.90	-	-	-	18.64	1%	
Educ	825.97	760.25	-	-	-	-65.72	-8%	25.67	15.82	-	-	-	-9.85	-38%	2.33	3.40	-	-	-	1.07	46%	853.97	779.47	-	-	-	-74.50	-9%	
NSci	4,326.37	4,378.72	-	-	-	52.35	1%	136.87	109.63	-	-	-	-27.24	-20%	10.27	15.67	-	-	-	5.40	53%	4,473.51	4,504.02	-	-	-	30.51	1%	
SBS	4,570.58	4,396.40	-	-	-	-174.18	-4%	87.70	61.80	-	-	-	-25.90	-30%	15.27	12.43	-	-	-	-2.84	-19%	4,673.55	4,470.63	-	-	-	-202.92	-4%	
UNV	33.53	47.67	-	-	-	14.14	42%	0.00	0.00	-	-	-	0.00	-	0.00	0.00	-	-	-	33.53	47.67	-	-	-	14.14	42%			
<b>Total</b>	<b>15,028.17</b>	<b>14,711.29</b>	-	-	-	<b>-316.88</b>	<b>-2%</b>																						

Comparing 3/22/2018 to 3/21/2019		32 Days to Spring 2019 Census on: 4/22/2019																														
		Resident						Non-Resident Foreign						Non-Resident USA						Total												
		2018	2019	Trgt	Trgt Δ	Trgt % Δ	N Δ	% Δ	2018	2019	Trgt	Trgt Δ	Trgt % Δ	N Δ	% Δ	2018	2019	Trgt	Trgt Δ	Trgt % Δ	N Δ	% Δ	2018	2019	Trgt	Trgt Δ	Trgt % Δ	N Δ	% Δ			
<b>New Students</b>																																
FT Freshmen	0	0	4	-4	-100%	0	-	5	4	20	-16	-79%	-1	-20%	0	0	1	-1	-100%	0	-	5	4	24	-20	-83%	-1	-20%				
LD Transfer	0	0	2	-2	-100%	0	-	5	10	3	7	233%	5	100%	0	0	0	0	-	0	-	5	10	5	5	100%	5	100%				
UD Transfer	2	10	7	3	43%	8	400%	9	6	18	-12	-67%	-3	-33%	0	1	0	1	-	1	-	11	17	25	-8	-32%	6	55%				
PostBac	2	1	0	1	-	-1	-50%	0	0	2	-2	-100%	0	-	0	0	0	0	-100%	0	-	2	1	2	-1	-50%	-1	-50%				
PostBac Cr	8	9	19	-10	-53%	1	13%	0	0	0	0	-	0	-	0	0	0	0	-	0	-	8	9	19	-10	-53%	1	13%				
Masters	61	65	56	9	16%	4	7%	4	8	23	-15	-65%	4	100%	0	0	1	-1	-100%	0	-	65	73	80	-7	-9%	8	12%				
Doctoral	0	0	0	0	-	0	-	0	0	0	0	-	0	-	0	0	0	0	-	0	-	0	0	0	0	-	0	-				
Total	73	85	88	-3	-3%	12	16%	23	28	65	-37	-57%	5	22%	0	1	2	-1	-43%	1	-	96	114	155	-41	-26%	18	19%				
<b>Continue/Return</b>																																
Freshmen	2,774	2,743	2,552	191	7%	-31	-1%	56	27	70	-43	-61%	-29	-52%	5	2	2	0	-12%	-3	-60%	2,835	2,772	2,624	148	6%	-63	-2%				
Sophomores	2,613	2,416	2,453	-37	-1%	-197	-8%	102	77	84	-7	-8%	-25	-25%	5	4	6	-2	-30%	-1	-20%	2,720	2,497	2,542	-45	-2%	-223	-8%				
Juniors	4,307	4,295	3,773	522	14%	-12	0%	144	147	115	32	27%	3	2%	10	18	8	10	127%	8	80%	4,461	4,460	3,897	563	14%	-1	0%				
Seniors	5,277	5,096	5,760	-664	-12%	-181	-3%	205	206	222	-16	-7%	1	0%	15	14	12	2	12%	-1	-7%	5,497	5,316	5,994	-678	-11%	-181	-3%				
PostBac	19	14	26	-12	-47%	-5	-26%	0	3	2	0	63%	2	200%	0	0	1	-1	-100%	0	-	20	17	29	-12	-42%	-3	-15%				
PostBac Cr	341	263	328	-65	-20%	-78	-23%	0	0	0	0	-	0	-	0	0	0	0	-	0	-	341	263	328	-65	-20%	-78	-23%				
Masters	1,244	1,303	1,305	-2	0%	59	5%	104	80	138	-58	-42%	-24	-23%	14	17	9	8	87%	3	21%	1,362	1,400	1,453	-53	-4%	38	3%				
Doctoral	53	65	60	5	8%	12	23%	0	1	0	1	135%	1	-	0	0	0	0	-	0	-	53	66	61	5	9%	13	25%				
Return fr Absence	5	3	8	-5	-63%	-2	-40%	1	0	3	-3	-100%	-1	-100%	0	0	0	0	-	0	-	6	3	11	-8	-73%	-3	-50%				
Transitory	33	61	70	-9	-13%	28	85%	19	9	20	-11	-55%	-10	-53%	13	12	12	0	0%	-1	-8%	65	82	102	-20	-20%	17	26%				
Total	16,666	16,259	16,335	-76	0%	-407	-2%	632	550	655	-105	-16%	-82	-13%	62	67	51	16	32%	5	8%	17,360	16,876	17,041	-165	-1%	-484	-3%				
<b>Total Headcount</b>	<b>16,739</b>	<b>16,344</b>	<b>16,423</b>	<b>-79</b>	<b>0%</b>	<b>-395</b>	<b>-2%</b>	<b>655</b>	<b>578</b>	<b>720</b>	<b>-142</b>	<b>-20%</b>	<b>-77</b>	<b>-12%</b>	<b>62</b>	<b>68</b>	<b>52</b>	<b>16</b>	<b>30%</b>	<b>6</b>	<b>10%</b>	<b>17,456</b>	<b>16,990</b>	<b>17,196</b>	<b>-206</b>	<b>-1%</b>	<b>-466</b>	<b>-3%</b>				
<b>FTES All Students</b>																																
FT Freshmen	0.00	0.00	3.54	-3.54	-100%	0.00	-	4.07	2.13	18.46	-16.33	-88%	-1.94	-48%	0.00	0.00	0.43	-0.43	-100%	0	-	4.07	2.13	22.43	-20.30	-91%	-1.94	-48%				
Freshmen	2,571.47	2,595.26	2,258.14	337.12	15%	23.79	1%	48.33	26.94	65.93	-38.99	-59%	-21.39	-44%	5.07	2.20	1.94	0.26	14%	-3	-57%	2,624.87	2,624.40	2,326.01	298.39	13%	-0.47	0%				
Sophomores	2,411.74	2,222.33	2,168.80	53.53	2%	-189.41	-8%	92.73	70.20	82.73	-12.53	-15%	-22.53	-24%	3.87	4.07	4.84	-0.77	-16%	0	5%	2,508.34	2,296.60	2,256.37	40.23	2%	-211.74	-8%				
Juniors	3,987.80	3,999.60	3,341.82	657.78	20%	11.80	0%	141.13	135.46	113.46	22.00	19%	-5.67	-4%	9.27	18.00	6.78	11.22	165%	9	94%	4,138.20	4,153.06	3,462.06	691.00	20%	14.86	0%				
Seniors	4,674.20	4,483.33	5,093.87	-610.54	-12%	-190.87	-4%	195.66	184.93	224.25	-39.32	-18%	-10.73	-5%	13.73	11.80	10.65	1.15	11%	-2	-14%	4,883.59	4,680.06	5,328.77	-648.71	-12%	-203.53	-4%				
PostBac	12.60	8.94	23.38	-14.44	-42%	-3.66	-29%	0.93	2.40	3.41	-1.01	-30%	1.47	158%	0.00	0.00	1.29	-1.29	-100%	0	-	13.53	11.34	28.08	-16.74	-60%	-2.19	-16%				
PostBac Cr	294.93	244.67	307.14	-62.47	-20%	-50.26	-17%	0.00	0.00	0.00	0.00	-	0.00	-	0.00	0.00	0.00	0.00	-	0	-	294.93	244.67	307.14	-62.47	-20%	-50.26	-17%				
Masters	985.58	1,042.84	1,203.63	-160.79	-13%	57.26	6%	88.83	61.83	153.53	-91.70	-60%	-27.00	-30%	9.33	13.17	8.50	4.67	55%	4	41%	1,083.74	1,117.84	1,365.66	-247.82	-18%	34.10	3%				
Doctoral	35.17	39.67	53.14	-13.47	-25%	4.50	13%	0.00	0.75	0.40	0.35	87%	0.75	-	0.00	0.00	0.00	0.00	-	0	-	35.17	40.42	53.54	-13.12	-25%	5.25	15%				
Return fr Absence	3.27	2.48	7.07	-4.59	-65%	-0.79	-24%	0.27	0.00	2.83	-2.83	-100%	-0.27	-100%	0.00	0.00	0.00	0.00	-	0	-	3.54	2.48	9.91	-7.43	-75%	-1.06	-30%				
Transitory	12.60	18.80	61.90	-43.10	-70%	6.20	49%	15.87	7.40	19.98	-12.58	-63%	-8.47	-53%	10.40	7.07	10.24	-3.17	-31%	-3	-32%	38.87	33.27	92.12	-58.85	-64%	-5.60	-14%				
Total FTES	14,989.36	14,657.92	14,522.42	135.50	1%	-331.44	-2%	587.82	492.04	684.99	-192.95	-28%	-95.78	-16%	51.67	56.31	44.67	11.64	26%	5	9%	15,628.85	15,206.27	15,252.08	-45.81	0%	-422.58	-3%				
<b>Mean Unit Load</b>																																
FT Freshmen	-	-	13.26	-	-	-	-	12.21	7.99	14.20	-6.21	-44%	-4.22	-34.6%	-	-	12.80	-	-	-	-	12.21	7.99	14.02	-6.03	-43%	-4.22	-34.6%				
Freshmen	13.88	14.12	13.26	0.86	6%	0.24	1.7%	12.63	13.81	14.38	-0.57	-4%	1.19	9.4%	12.89	10.25	12.80	-2.55	-20%	-2.64	-20.5%	13.84	14.10	13.30	0.80	6%	0.26	1.9%				
Sophomores	13.84	13.75	13.26	0.49	4%	-0.09	-0.6%	13.12	12.39	14.25	-1.87	-13%	-0.73	-5.6%	13.61	15.26	12.80	2.46	19%	3.65	31.5%	13.81	13.71	13.30	0.41	3%	-0.10	-0.7%				
Juniors	13.87	13.91	13.26	0.65	5%	0.04	0.3%	14.23	13.48	14.26	-0.77	-5%	-0.75	-5.3%	13.91	13.70	12.80	0.90	7%	-0.20	-1.5%	13.89	13.90	13.29	0.60	5%	0.01	0.1%				
Seniors	13.28	13.19	13.26	-0.08	-1%	-0.09	-0.7%	13.99	13.27	14.24	-0.97	-7%	-0.71	-5.1%	13.73	12.64	12.80	-0.16	-1%	-1.09	-7.9%	13.31	13.19	13.30	-0.11	-1%	-0.12	-0.9%				
PostBac	7.83	7.43	13.26	-5.83	-44%	-0.40	-5.1%	13.95	12.00	14.76	-2.76	-19%	-1.95	-14.0%	-	12	12.80	-0.80	-6%	-	-	8.00	8.00	13.35	-5.35	-40%	0.00	0.0%				
PostBac Cr	12.68	13.49	13.26	0.23	2%	0.82	6.4%	-	-	-	-	-	-	-	-	-	-	-	-	-	-	12.68	13.49	13.26	0.23	2%	0.82	6.4%				
Masters	9.06	9.15	10.61	-1.46	-14%	0.09	1.0%	9.87	8.43	11.40	-2.97	-26%	-1.44	-14.6%	8.00	9.30	10.24	-0.95	-9%	1.30	16.2%	9.11	9.11	10.69	-1.58	-15%	0.00	0.0%				
Doctoral	7.96	7.32	10.61	-3.29	-31%	-0.64	-8.0%	-	9.00	11.33	-2.33	-21%	-	-	-	-	-	-	-	-	-	7.96	7.35	10.62	-3.27	-31%	-0.61	-7.7%				
Total	13.25	13.25	13.03	0.22	2%	0.01	0.0%	13.05	12.44	13.62	-1.18	-9%	-0.61	-4.7%	12.05	11.84	12.32	-0.48	-4%	-0.21	-1.7%	13.24	13.22	13.06	0.16	1%	-0.02	-0.1%				
<b>FTES College of Disc</b>																																
A&L	3,271.93	3,075.28	-	-	-	-196.65	-6%	73.13	67.00	-	-	-	-6.13	-8%	11.07	14.00	-	-	-	2.93	26%	3,356.13	3,156.28	-	-	-	-199.85	-6%				
BPA	1,987.27	2,035.63	-	-	-	48.36	2%	266.67	238.27	-	-	-	-28.40	-11%	12.73	10.40	-	-	-	-2.33	-18%	2,266.67	2,284.30	-	-	-	17.63	1%				
Educ	818.93	754.10	-	-	-	-64.83	-8%	24.67	15.88	-	-	-	-8.79	-36%	2.33	3.40	-	-	-	1.07	46%	845.93	773.38	-	-	-	-72.55	-9%				
NSci	4,321.32	4,367.38	-	-	-	46.06	1%	136.20	109.37	-	-	-	-26.83	-20%	10.27	15.80	-	-	-	5.53	54%	4,467.79	4,492.55	-	-	-	24.76	1%				
SBS	4,556.37	4,377.85	-	-	-	-178.52	-4%	87.17	61.53	-	-	-	-25.64	-29%	15.27	12.70	-	-	-	-2.57	-17%	4,658.81	4,452.08	-	-	-	-206.73	-4%				
UNV	33.53	47.67	-	-	-	14.14	42%	0.00	0.00	-	-	-	0.00	-	0.00	0.00	-	-	-	0.00	-	33.53	47.67	-	-	-	14.14	42%				
Total	14,989.35	14,657.91	-	-	-	-331.44	-2%	587.84	492.05	-	-	-	-95.79	-16%	51.67	56.30	-	-	-	4.63	9%	15,628.86	15,206.26	-	-	-	-422.60	-3%				
<b>FTES</b>																																
College Year	Summer	Fall	Winter	Spring	CY	CO	up/down	Summer	Fall	Winter	Spring	CY	Summer	Fall	Winter	Spring	CY	Summer	Fall	Winter	Spring	CY	Summer	Fall	Winter	Spring	CY	Summer	Fall	Winter	Spring	CY
2013-14 Actual	1730.23	15277.16	14171.37	13155.70	14778.15	14016	762.15	248.69	775.80	751.62	779.34	851.82	2.13	59.74</																		

Comparing 3/21/2018 to 3/20/2019 33 Days to Spring 2019 Census on: 4/22/2019

	Resident							Non-Resident Foreign						Non-Resident USA						Total									
	2018	2019	Trgt	Trgt Δ	Trgt % Δ	N Δ	% Δ	2018	2019	Trgt	Trgt Δ	Trgt % Δ	N Δ	% Δ	2018	2019	Trgt	Trgt Δ	Trgt % Δ	N Δ	% Δ	2018	2019	Trgt	Trgt Δ	Trgt % Δ	N Δ	% Δ	
<b>New Students</b>																													
FT Freshmen	0	0	4	-4	-100%	0	-	4	3	20	-17	-85%	-1	-25%	0	0	1	-1	-100%	0	-	4	3	24	-21	-88%	-1	-25%	
LD Transfer	0	0	2	-2	-100%	0	-	5	10	3	7	233%	5	100%	0	0	0	0	-	0	-	5	10	5	5	100%	5	100%	
UD Transfer	2	10	7	3	43%	8	400%	9	2	18	-16	-89%	-7	-78%	0	1	0	1	-	1	-	11	13	25	-12	-48%	2	18%	
PostBac	2	1	0	1	-	-1	-50%	0	0	2	-2	-100%	0	-	0	0	0	0	-100%	0	-	2	1	2	-1	-50%	-1	-50%	
PostBac Cr	7	8	19	-11	-58%	1	14%	0	0	0	0	-	0	-	0	0	0	0	-	0	-	7	8	19	-11	-58%	1	14%	
Masters	61	65	56	9	16%	4	7%	4	8	23	-15	-65%	4	100%	0	0	1	-1	-100%	0	-	65	73	80	-7	-9%	8	12%	
Doctoral	0	0	0	0	-	0	-	0	0	0	0	-	0	-	0	0	0	0	-	0	-	0	0	0	0	-	0	-	
<b>Total</b>	72	84	88	-4	-5%	12	17%	22	23	65	-42	-65%	1	5%	0	1	2	-1	-43%	1	-	94	108	155	-47	-30%	14	15%	
<b>Continue/Return</b>																													
Freshmen	2,778	2,753	2,552	201	8%	-25	-1%	54	27	70	-43	-61%	-27	-50%	5	2	2	0	-12%	-3	-60%	2,837	2,782	2,624	158	6%	-55	-2%	
Sophomores	2,609	2,418	2,453	-35	-1%	-191	-7%	102	77	84	-7	-8%	-25	-25%	5	4	6	-2	-30%	-1	-20%	2,716	2,499	2,542	-43	-2%	-217	-8%	
Juniors	4,319	4,298	3,773	525	14%	-21	0%	144	148	115	33	28%	4	3%	10	18	8	10	127%	8	80%	4,473	4,464	3,897	567	15%	-9	0%	
Seniors	5,248	5,061	5,760	-699	-12%	-187	-4%	205	204	222	-18	-8%	-1	0%	15	15	12	3	20%	0	0%	5,468	5,280	5,994	-714	-12%	-188	-3%	
PostBac	19	14	26	-12	-47%	-5	-26%	0	3	2	0	63%	2	200%	0	0	1	-1	-100%	0	-	20	17	29	-12	-42%	-3	-15%	
PostBac Cr	341	261	328	-67	-21%	-80	-23%	0	0	0	0	-	0	-	0	0	0	0	-	0	-	341	261	328	-67	-21%	-80	-23%	
Masters	1,235	1,290	1,305	-15	-1%	55	4%	103	79	138	-59	-43%	-24	-23%	14	17	9	8	87%	3	21%	1,352	1,386	1,453	-67	-5%	34	3%	
Doctoral	53	66	60	6	10%	13	25%	0	1	0	1	135%	1	-	0	0	0	0	-	0	-	53	67	61	6	11%	14	26%	
Return fr Absence	5	2	8	-6	-75%	-3	-60%	1	0	3	-3	-100%	-1	-100%	0	0	0	0	-	0	-	6	2	11	-9	-82%	-4	-67%	
Transitory	31	49	70	-21	-30%	18	58%	19	9	20	-11	-55%	-10	-53%	13	11	12	-1	-8%	-2	-15%	63	69	102	-33	-32%	6	10%	
<b>Total</b>	16,638	16,212	16,335	-123	-1%	-426	-3%	629	548	655	-107	-16%	-81	-13%	62	67	51	16	32%	5	8%	17,329	16,827	17,041	-214	-1%	-502	-3%	
<b>Total Headcount</b>	16,710	16,296	16,423	-127	-1%	-414	-2%	651	571	720	-149	-21%	-80	-12%	62	68	52	16	30%	6	10%	17,423	16,935	17,196	-261	-2%	-488	-3%	
<b>FTES All Students</b>																													
FT Freshmen	0.00	0.00	3.54	-3.54	-100%	0.00	-	3.20	1.60	18.46	-16.86	-91%	-1.60	-50%	0.00	0.00	0.43	-0.43	-100%	0	-	3.20	1.60	22.43	-20.83	-93%	-1.60	-50%	
Freshmen	2,573.93	2,601.20	2,258.14	343.06	15%	27.27	1%	46.73	25.87	65.93	-40.06	-61%	-20.86	-45%	5.07	2.20	1.94	0.26	14%	-3	-57%	2,625.73	2,629.27	2,326.01	303.26	13%	3.54	0%	
Sophomores	2,406.74	2,220.87	2,168.80	52.07	2%	-185.87	-8%	92.33	69.93	82.73	-12.80	-15%	-22.40	-24%	4.87	4.07	4.84	-0.77	-16%	-1	-16%	2,503.94	2,294.87	2,256.37	38.50	2%	-209.07	-8%	
Juniors	3,992.53	3,997.33	3,341.82	655.51	20%	4.80	0%	140.53	135.93	113.46	22.47	20%	-4.60	-3%	9.27	18.00	6.78	11.22	165%	9	94%	4,142.33	4,151.26	3,462.06	689.20	20%	8.93	0%	
Seniors	4,643.13	4,440.53	5,093.87	-653.34	-13%	-202.60	-4%	195.93	182.07	224.25	-42.18	-19%	-13.86	-7%	13.73	12.07	10.65	1.42	13%	-2	-12%	4,852.79	4,634.67	5,328.77	-694.10	-13%	-218.12	-4%	
PostBac	12.60	8.94	23.38	-14.44	-62%	-3.66	-29%	0.93	2.40	3.41	-1.01	-30%	1.47	158%	0.00	0.00	1.29	-1.29	-100%	0	-	13.53	11.34	28.08	-16.74	-60%	-2.19	-16%	
PostBac Cr	291.60	242.53	307.14	-64.61	-21%	-49.07	-17%	0.00	0.00	0.00	0.00	-	0.00	-	0.00	0.00	0.00	0.00	-	0	-	291.60	242.53	307.14	-64.61	-21%	-49.07	-17%	
Masters	973.33	1,035.92	1,203.63	-167.71	-14%	62.59	6%	87.50	61.17	153.53	-92.36	-60%	-26.33	-30%	9.33	13.17	8.50	4.67	55%	4	41%	1,070.16	1,110.26	1,365.66	-255.40	-19%	40.10	4%	
Doctoral	35.17	40.33	53.14	-12.81	-24%	5.16	15%	0.00	0.75	0.40	0.35	87%	0.75	-	0.00	0.00	0.00	0.00	-	0	-	35.17	41.08	53.54	-12.46	-23%	5.91	17%	
Return fr Absence	3.40	1.95	7.07	-5.12	-72%	-1.45	-43%	0.27	0.00	2.83	-2.83	-100%	-0.27	-100%	0.00	0.00	0.00	0.00	-	0	-	3.67	1.95	9.91	-7.96	-80%	-1.72	-47%	
Transitory	12.07	15.60	61.90	-46.30	-75%	3.53	29%	15.87	7.27	19.98	-12.71	-64%	-8.60	-54%	10.40	6.80	10.24	-3.44	-34%	-4	-35%	38.34	29.67	92.12	-62.45	-68%	-8.67	-23%	
<b>Total FTES</b>	14,944.50	14,605.20	14,522.42	82.78	1%	-339.30	-2%	583.29	486.99	684.99	-198.00	-29%	-96.30	-17%	52.67	56.31	44.67	11.64	26%	4	7%	15,580.46	15,148.50	15,252.08	-103.58	-1%	-431.96	-3%	
<b>Mean Unit Load</b>																													
FT Freshmen	-	-	13.26	-	-	-	-	12.00	8.00	14.20	-6.20	-44%	-4.00	-33.3%	-	-	12.80	-	-	-	-	12.00	8.00	14.02	-6.02	-43%	-4.00	-33.3%	
Freshmen	13.88	14.12	13.26	0.85	6%	0.23	1.7%	12.64	13.33	14.38	-1.06	-7%	0.68	5.4%	12.89	10.81	12.80	-1.99	-16%	-2.08	-16.1%	13.84	14.09	13.30	0.79	6%	0.25	1.8%	
Sophomores	13.83	13.74	13.26	0.48	4%	-0.09	-0.6%	13.07	12.34	14.25	-1.91	-13%	-0.72	-5.5%	14.61	15.26	12.80	2.46	19%	0.65	4.5%	13.80	13.70	13.30	0.40	3%	-0.11	-0.8%	
Juniors	13.85	13.90	13.26	0.64	5%	0.05	0.4%	14.17	13.53	14.26	-0.73	-5%	-0.64	-4.5%	13.91	13.70	12.80	0.90	7%	-0.20	-1.5%	13.86	13.89	13.29	0.59	4%	0.03	0.2%	
Seniors	13.26	13.15	13.26	-0.11	-1%	-0.11	-0.8%	14.00	13.39	14.24	-0.85	-6%	-0.62	-4.4%	13.73	12.07	12.80	-0.73	-6%	-1.66	-12.1%	13.29	13.16	13.30	-0.15	-1%	-0.14	-1.0%	
PostBac	7.83	7.84	13.26	-5.42	-41%	0.01	0.2%	13.95	12.00	14.76	-2.76	-19%	-1.95	-14.0%	-	12	12.80	-0.80	-6%	-	-	8.00	8.42	13.35	-4.94	-37%	0.42	5.2%	
PostBac Cr	12.57	13.52	13.26	0.26	2%	0.96	7.6%	-	-	-	-	-	-	-	-	-	-	-	-	-	-	12.57	13.52	13.26	0.26	2%	0.96	7.6%	
Masters	9.01	9.18	10.61	-1.43	-14%	0.16	1.8%	9.81	8.44	11.40	-2.96	-26%	-1.38	-14.0%	8.00	9.30	10.24	-0.95	-9%	1.30	16.2%	9.06	9.13	10.69	-1.56	-15%	0.07	0.8%	
Doctoral	7.96	7.33	10.61	-3.28	-31%	-0.63	-7.9%	-	9.00	11.33	-2.33	-21%	-	-	-	-	-	-	-	-	-	7.96	7.36	10.62	-3.26	-31%	-0.61	-7.6%	
<b>Total</b>	13.23	13.25	13.03	0.21	2%	0.01	0.1%	13.04	12.47	13.62	-1.15	-8%	-0.57	-4.4%	12.29	11.84	12.32	-0.48	-4%	-0.45	-3.7%	13.22	13.21	13.06	0.16	1%	-0.01	-0.1%	
<b>FTES College of Disc</b>																													
A&L	3,263.45	3,062.95				-200.50	-6%	72.73	65.67				-7.06	-10%	11.07	14.00				2.93	26%	3,347.25	3,142.62				-204.63	-6%	
BPA	1,984.33	2,031.30				46.97	2%	266.47	236.87				-29.60	-11%	12.73	10.67				-2.06	-16%	2,263.53	2,278.84				15.31	1%	
Educ	806.22	750.63				-55.59	-7%	24.67	15.55				-9.12	-37%	2.33	3.40				1.07	46%	833.22	769.58				-63.64	-8%	
NSci	4,312.68	4,355.15				42.47	1%	133.87	108.70				-25.17	-19%	10.73	15.80				5.07	47%	4,457.28	4,479.65				22.37	1%	
SBS	4,544.28	4,357.50				-186.78	-4%	85.57	60.20				-25.37	-30%	15.80	12.43				-3.37	-21%	4,645.65	4,430.13				-215.52	-5%	
UNV	33.53	47.67				14.14	42%	0.00	0.00				0.00	0%	0.00	0.00				0.00	0%	33.53	47.67				14.14	42%	
<b>Total</b>	14,944.49	14,605.20				-339.29	-2%	583.3																					



Comparing 3/19/2018 to 3/18/2019		35 Days to Spring 2019 Census on: 4/22/2019																											
		Resident						Non-Resident Foreign						Non-Resident USA						Total									
		2018	2019	Trgt	Trgt Δ	Trgt % Δ	N Δ	% Δ	2018	2019	Trgt	Trgt Δ	Trgt % Δ	N Δ	% Δ	2018	2019	Trgt	Trgt Δ	Trgt % Δ	N Δ	% Δ	2018	2019	Trgt	Trgt Δ	Trgt % Δ	N Δ	% Δ
<b>New Students</b>																													
FT Freshmen	0	0	4	-4	-100%	0	-	4	2	20	-18	-90%	-2	-50%	0	0	1	-1	-100%	0	-	4	2	24	-22	-92%	-2	-50%	
LD Transfer	0	0	2	-2	-100%	0	-	5	7	3	4	133%	2	40%	0	0	0	0	-	0	-	5	7	5	2	40%	2	40%	
UD Transfer	2	10	7	3	43%	8	400%	9	2	18	-16	-89%	-7	-78%	0	1	0	1	-	1	-	11	13	25	-12	-48%	2	18%	
PostBac	1	1	0	1	-	0	0%	0	0	2	-2	-100%	0	-	0	0	0	0	-100%	0	-	1	1	2	-1	-50%	0	0%	
PostBac Cr	7	8	19	-11	-58%	1	14%	0	0	0	0	-	0	-	0	0	0	0	-	0	-	7	8	19	-11	-58%	1	14%	
Masters	59	63	56	7	13%	4	7%	4	7	23	-16	-70%	3	75%	0	0	1	-1	-100%	0	-	63	70	80	-10	-13%	7	11%	
Doctoral	0	0	0	0	-	0	-	0	0	0	0	-	0	-	0	0	0	0	-	0	-	0	0	0	0	-	0	-	
<b>Total</b>	<b>69</b>	<b>82</b>	<b>88</b>	<b>-6</b>	<b>-7%</b>	<b>13</b>	<b>19%</b>	<b>22</b>	<b>18</b>	<b>65</b>	<b>-47</b>	<b>-72%</b>	<b>-4</b>	<b>-18%</b>	<b>0</b>	<b>1</b>	<b>2</b>	<b>-1</b>	<b>-43%</b>	<b>1</b>	<b>-</b>	<b>91</b>	<b>101</b>	<b>155</b>	<b>-54</b>	<b>-35%</b>	<b>10</b>	<b>11%</b>	
<b>Continue/Return</b>																													
Freshmen	2,765	2,733	2,552	181	7%	-32	-1%	52	26	70	-44	-63%	-26	-50%	5	2	2	0	-12%	-3	-60%	2,822	2,761	2,624	137	5%	-61	-2%	
Sophomores	2,600	2,404	2,453	-49	-2%	-196	-8%	102	76	84	-8	-10%	-26	-25%	5	4	6	-2	-30%	-1	-20%	2,707	2,484	2,542	-58	-2%	-223	-8%	
Juniors	4,308	4,285	3,773	512	14%	-23	-1%	140	146	115	31	27%	6	4%	10	18	8	10	127%	8	80%	4,458	4,449	3,897	552	14%	-9	0%	
Seniors	5,236	5,045	5,760	-715	-12%	-191	-4%	205	205	222	-17	-8%	0	0%	15	15	12	3	20%	0	0%	5,456	5,265	5,994	-729	-12%	-191	-4%	
PostBac	19	14	26	-12	-47%	-5	-26%	1	3	2	0	63%	2	200%	0	0	1	-1	-100%	0	-	20	17	29	-12	-42%	-3	-15%	
PostBac Cr	332	256	328	-72	-22%	-76	-23%	0	0	0	0	-	0	-	0	0	0	0	-	0	-	332	256	328	-72	-22%	-76	-23%	
Masters	1,215	1,273	1,305	-32	-2%	58	5%	102	77	138	-61	-44%	-25	-25%	14	17	9	8	87%	3	21%	1,331	1,367	1,453	-86	-6%	36	3%	
Doctoral	53	66	60	6	10%	13	25%	0	1	0	1	135%	1	-	0	0	0	0	-	0	-	53	67	61	6	11%	14	26%	
Return fr Absence	5	2	8	-6	-75%	-3	-60%	1	0	3	-3	-100%	-1	-100%	0	0	0	0	-	0	-	6	2	11	-9	-82%	-4	-67%	
Transitory	31	47	70	-23	-33%	16	52%	19	8	20	-12	-60%	-11	-58%	13	11	12	-1	-8%	-2	-15%	63	66	102	-36	-35%	3	5%	
<b>Total</b>	<b>16,564</b>	<b>16,125</b>	<b>16,335</b>	<b>-210</b>	<b>-1%</b>	<b>-439</b>	<b>-3%</b>	<b>622</b>	<b>542</b>	<b>655</b>	<b>-113</b>	<b>-17%</b>	<b>-80</b>	<b>-13%</b>	<b>62</b>	<b>67</b>	<b>51</b>	<b>16</b>	<b>32%</b>	<b>5</b>	<b>8%</b>	<b>17,248</b>	<b>16,734</b>	<b>17,041</b>	<b>-307</b>	<b>-2%</b>	<b>-514</b>	<b>-3%</b>	
<b>Total Headcount</b>	<b>16,633</b>	<b>16,207</b>	<b>16,423</b>	<b>-216</b>	<b>-1%</b>	<b>-426</b>	<b>-3%</b>	<b>644</b>	<b>560</b>	<b>720</b>	<b>-160</b>	<b>-22%</b>	<b>-84</b>	<b>-13%</b>	<b>62</b>	<b>68</b>	<b>52</b>	<b>16</b>	<b>30%</b>	<b>6</b>	<b>10%</b>	<b>17,339</b>	<b>16,835</b>	<b>17,196</b>	<b>-361</b>	<b>-2%</b>	<b>-504</b>	<b>-3%</b>	
<b>FTES All Students</b>																													
FT Freshmen	0.00	0.00	3.54	-3.54	-100%	0.00	-	3.20	1.07	18.46	-17.39	-94%	-2.13	-67%	0.00	0.00	0.43	-0.43	-100%	0	-	3.20	1.07	22.43	-21.36	-95%	-2.13	-67%	
Freshmen	2,566.13	2,579.53	2,258.14	321.39	14%	13.40	1%	45.40	24.66	65.93	-41.27	-63%	-20.74	-46%	5.07	2.20	1.94	0.26	14%	-3	-57%	2,616.60	2,606.39	2,326.01	280.38	12%	-10.21	0%	
Sophomores	2,397.00	2,199.27	2,168.80	30.47	1%	-197.73	-8%	91.47	67.00	82.73	-15.73	-19%	-24.47	-27%	4.87	4.07	4.84	-0.77	-16%	-1	-16%	2,493.34	2,270.34	2,256.37	13.97	1%	-223.00	-9%	
Juniors	3,981.06	3,971.99	3,341.82	630.17	19%	-9.07	0%	137.80	132.66	113.46	19.20	17%	-5.14	-4%	9.00	18.26	6.78	11.48	169%	9	103%	4,127.86	4,122.91	3,462.06	660.85	19%	-4.95	0%	
Seniors	4,618.60	4,411.47	5,093.87	-682.40	-13%	-207.13	-4%	195.33	181.13	224.25	-43.12	-19%	-14.20	-7%	13.73	12.07	10.65	1.42	13%	-2	-12%	4,827.66	4,604.67	5,328.77	-724.10	-14%	-222.99	-5%	
PostBac	11.80	8.60	23.38	-14.78	-63%	-3.20	-27%	0.93	2.40	3.41	-1.01	-30%	1.47	158%	0.00	0.00	1.29	-1.29	-100%	0	-	12.73	11.00	28.08	-17.08	-61%	-1.73	-14%	
PostBac Cr	284.33	235.60	307.14	-71.54	-23%	-48.73	-17%	0.00	0.00	0.00	0.00	-	0.00	-	0.00	0.00	0.00	0.00	-	0	-	284.33	235.60	307.14	-71.54	-23%	-48.73	-17%	
Masters	950.92	1,013.42	1,203.63	-190.21	-16%	62.50	7%	86.33	58.08	153.53	-95.45	-62%	-28.25	-33%	9.67	13.17	8.50	4.67	55%	4	36%	1,046.92	1,084.67	1,365.66	-280.99	-21%	37.75	4%	
Doctoral	35.17	40.33	53.14	-12.81	-24%	5.16	15%	0.00	0.75	0.40	0.35	87%	0.75	-	0.00	0.00	0.00	0.00	-	0	-	35.17	41.08	53.54	-12.46	-23%	5.91	17%	
Return fr Absence	3.40	1.95	7.07	-5.12	-72%	-1.45	-43%	0.27	0.00	2.83	-2.83	-100%	-0.27	-100%	0.00	0.00	0.00	0.00	-	0	-	3.67	1.95	9.91	-7.96	-80%	-1.72	-47%	
Transitory	12.07	14.80	61.90	-47.10	-76%	2.73	23%	15.87	6.33	19.98	-13.65	-68%	-9.54	-60%	10.40	6.53	10.24	-3.71	-36%	-4	-37%	38.34	27.66	92.12	-64.46	-70%	-10.68	-28%	
<b>Total FTES</b>	<b>14,860.48</b>	<b>14,476.96</b>	<b>14,522.42</b>	<b>-45.46</b>	<b>0%</b>	<b>-383.52</b>	<b>-3%</b>	<b>576.60</b>	<b>474.08</b>	<b>684.99</b>	<b>-210.91</b>	<b>-31%</b>	<b>-102.52</b>	<b>-18%</b>	<b>52.74</b>	<b>56.30</b>	<b>44.67</b>	<b>11.63</b>	<b>26%</b>	<b>4</b>	<b>7%</b>	<b>15,489.82</b>	<b>15,007.34</b>	<b>15,252.08</b>	<b>-244.74</b>	<b>-2%</b>	<b>-482.48</b>	<b>-3%</b>	
<b>Mean Unit Load</b>																													
FT Freshmen	-	-	13.26	-	-	-	-	12.00	8.03	14.20	-6.18	-43%	-3.98	-33.1%	-	-	12.80	-	-	-	-	12.00	8.03	14.02	-5.99	-43%	-3.98	-33.1%	
Freshmen	13.91	14.10	13.26	0.84	6%	0.20	1.4%	12.72	13.17	14.38	-1.21	-8%	0.45	3.6%	12.89	10.46	12.80	-2.34	-18%	-2.43	-18.9%	13.87	14.08	13.30	0.78	6%	0.21	1.5%	
Sophomores	13.82	13.69	13.26	0.42	3%	-0.13	-1.0%	12.94	12.41	14.25	-1.85	-13%	-0.54	-4.1%	14.61	15.26	12.80	2.46	19%	0.65	4.5%	13.79	13.65	13.30	0.35	3%	-0.14	-1.0%	
Juniors	13.85	13.86	13.26	0.59	4%	0.01	0.1%	14.28	13.38	14.26	-0.88	-6%	-0.90	-6.3%	13.50	13.90	12.80	1.09	9%	0.40	2.9%	13.86	13.84	13.29	0.55	4%	-0.02	-0.1%	
Seniors	13.22	13.11	13.26	-0.16	-1%	-0.12	-0.9%	13.96	13.25	14.24	-0.99	-7%	-0.71	-5.1%	13.73	12.07	12.80	-0.73	-6%	-1.66	-12.1%	13.25	13.11	13.30	-0.19	-1%	-0.15	-1.1%	
PostBac	7.71	7.79	13.26	-5.47	-41%	0.09	1.1%	13.95	12.00	14.76	-2.76	-19%	-1.95	-14.0%	-	12	12.80	-0.80	-6%	-	-	7.89	8.39	13.35	-4.96	-37%	0.51	6.5%	
PostBac Cr	12.58	13.39	13.26	0.12	1%	0.81	6.4%	-	-	-	-	-	-	-	-	-	-	-	-	-	-	12.58	13.39	13.26	0.12	1%	0.81	6.4%	
Masters	8.96	9.11	10.61	-1.51	-14%	0.15	1.7%	9.77	8.30	11.40	-3.10	-27%	-1.48	-15.1%	8.29	9.30	10.24	-0.95	-9%	1.01	12.2%	9.01	9.06	10.69	-1.63	-15%	0.05	0.5%	
Doctoral	7.96	7.33	10.61	-3.28	-31%	-0.63	-7.9%	-	9.00	11.33	-2.33	-21%	-	-	-	-	-	-	-	-	-	7.96	7.36	10.62	-3.26	-31%	-0.61	-7.6%	
<b>Total</b>	<b>13.22</b>	<b>13.20</b>	<b>13.03</b>	<b>0.17</b>	<b>1%</b>	<b>-0.02</b>	<b>-0.1%</b>	<b>13.03</b>	<b>12.38</b>	<b>13.62</b>	<b>-1.24</b>	<b>-9%</b>	<b>-0.64</b>	<b>-4.9%</b>	<b>12.29</b>	<b>11.84</b>	<b>12.32</b>	<b>-0.48</b>	<b>-4%</b>	<b>-0.45</b>	<b>-3.7%</b>	<b>13.21</b>	<b>13.17</b>	<b>13.06</b>	<b>0.11</b>	<b>1%</b>	<b>-0.04</b>	<b>-0.3%</b>	
<b>FTES College of Disc</b>																													
A&L	3,257.72	3,039.60				-218.12	-7%	73.07	64.13				-8.94	-12%	11.07	13.73				2.66	24%	3,341.86	3,117.46				-224.40	-7%	
BPA	1,975.07	2,009.03				33.96	2%	263.07	231.27				-31.80	-12%	12.47	10.67				-1.80	-14%	2,250.61	2,250.97				0.36	0%	
Educ	792.25	732.27				-59.98	-8%	24.00	14.88				-9.12	-38%	2.67	3.40				0.73	27%	818.92	750.55				-68.37	-8%	
NSci	4,295.67	4,325.05				29.38	1%	131.97	105.82				-26.15	-20%	10.73	16.07				5.34	50%	4,438.37	4,446.94				8.57	0%	
SBS	4,506.25	4,323.48				-182.77	-4%	84.50	58.00				-26.50	-31%	15.80	12.43				-3.37	-21%	4,606.55	4,393.91				-212.64	-5%	
UNV	33.53	47.53				14.00	42%	0.00	0.00				0.00	0%	0.00	0.00				0.00	0%	33.53	47.53				14.00	42%	
<b>Total</b>	<b>14,860.49</b>	<b>14,476.96</b>				<b>-383.53</b>	<b>-3%</b>	<b>576.61</b>	<b>474.10</b>				<b>-102.51</b>	<b>-18%</b>	<b>52.74</b>	<b>56.30</b>				<b>3.56</b>	<b>7%</b>	<b>15,489.84</b>	<b>15</b>						

Comparing 3/16/2018 to 3/15/2019 38 Days to Spring 2019 Census on: 4/22/2019

	Resident							Non-Resident Foreign					Non-Resident USA					Total											
	2018	2019	Trgt	Trgt Δ	Trgt % Δ	N Δ	% Δ	2018	2019	Trgt	Trgt Δ	Trgt % Δ	N Δ	% Δ	2018	2019	Trgt	Trgt Δ	Trgt % Δ	N Δ	% Δ	2018	2019	Trgt	Trgt Δ	Trgt % Δ	N Δ	% Δ	
<b>New Students</b>																													
FT Freshmen	0	0	4	-4	-100%	0	-	4	1	20	-19	-95%	-3	-75%	0	0	1	-1	-100%	0	-	4	1	24	-23	-96%	-3	-75%	
LD Transfer	0	0	2	-2	-100%	0	-	4	6	3	3	100%	2	50%	0	0	0	0	-	0	-	4	6	5	1	-20%	2	50%	
UD Transfer	2	10	7	3	43%	8	400%	8	2	18	-16	-89%	-6	-75%	0	1	0	1	-	1	-	10	13	25	-12	-48%	3	30%	
PostBac	1	1	0	1	-	0	0%	0	0	2	-2	-100%	0	-	0	0	0	0	-100%	0	-	1	1	2	-1	-50%	0	0%	
PostBac Cr	7	7	19	-12	-63%	0	0%	0	0	0	0	-	0	-	0	0	0	0	-	0	-	7	7	19	-12	-63%	0	0%	
Masters	58	61	56	5	9%	3	5%	3	6	23	-17	-74%	3	100%	0	0	1	-1	-100%	0	-	61	67	80	-13	-16%	6	10%	
Doctoral	0	0	0	0	-	0	-	0	0	0	0	-	0	-	0	0	0	0	-	0	-	0	0	0	0	0	0	0%	
<b>Total</b>	68	79	88	-9	-10%	11	16%	19	15	65	-50	-77%	-4	-21%	0	1	2	-1	-43%	1	-	87	95	155	-60	-39%	8	9%	
<b>Continue/Return</b>																													
Freshmen	2,753	2,719	2,552	167	7%	-34	-1%	51	26	70	-44	-63%	-25	-49%	5	2	2	0	-12%	-3	-60%	2,809	2,747	2,624	123	5%	-62	-2%	
Sophomores	2,593	2,391	2,453	-62	-3%	-202	-8%	101	76	84	-8	-10%	-25	-25%	5	4	6	-2	-30%	-1	-20%	2,699	2,471	2,542	-71	-3%	-228	-8%	
Juniors	4,306	4,275	3,773	502	13%	-31	-1%	139	144	115	29	25%	5	4%	10	18	8	10	127%	8	80%	4,455	4,437	3,897	540	14%	-18	0%	
Seniors	5,234	5,029	5,760	-731	-13%	-205	-4%	203	205	222	-17	-8%	2	1%	15	15	12	3	20%	0	0%	5,452	5,249	5,994	-745	-12%	-203	-4%	
PostBac	19	13	26	-13	-51%	-6	-32%	0	3	2	0	63%	2	200%	0	0	1	-1	-100%	0	-	20	16	29	-13	-46%	-4	-20%	
PostBac Cr	328	251	328	-77	-24%	-77	-23%	0	0	0	0	-	0	-	0	0	0	0	-	0	-	328	251	328	-77	-24%	-77	-23%	
Masters	1,191	1,248	1,305	-57	-4%	57	5%	103	77	138	-61	-44%	-26	-25%	14	16	9	7	76%	2	14%	1,308	1,341	1,453	-112	-8%	33	3%	
Doctoral	53	66	60	6	10%	13	25%	0	1	0	1	135%	1	-	0	0	0	0	-	0	-	53	67	61	6	11%	14	26%	
Return fr Absence	5	2	8	-6	-75%	-3	-60%	1	0	3	-3	-100%	-1	-100%	0	0	0	0	-	0	-	6	2	11	-9	-82%	-1	-67%	
Transitory	26	40	70	-30	-43%	14	54%	18	8	20	-12	-60%	-10	-56%	13	10	12	-2	-17%	-3	-23%	57	58	102	-44	-43%	1	2%	
<b>Total</b>	16,508	16,034	16,335	-301	-2%	-474	-3%	617	540	655	-115	-18%	-77	-12%	62	65	51	14	28%	3	5%	17,187	16,639	17,041	-402	-2%	-548	-3%	
<b>Total Headcount</b>	16,576	16,113	16,423	-310	-2%	-463	-3%	636	555	720	-165	-23%	-81	-13%	62	66	52	14	26%	4	6%	17,274	16,734	17,196	-462	-3%	-540	-3%	
<b>FTES All Students</b>																													
FT Freshmen	0.00	0.00	3.54	-3.54	-100%	0.00	-	3.20	0.53	18.46	-17.93	-97%	-2.67	-83%	0.00	0.00	0.43	-0.43	-100%	0	-	3.20	0.53	22.43	-21.90	-98%	-2.67	-83%	
Freshmen	2,553.06	2,564.60	2,258.14	306.46	14%	11.54	0%	45.14	24.00	65.93	-41.93	-64%	-21.14	-47%	4.26	2.20	1.94	0.26	14%	-2	-48%	2,602.46	2,590.80	2,326.01	264.79	11%	-11.66	0%	
Sophomores	2,387.54	2,185.67	2,168.80	16.87	1%	-201.87	-8%	89.73	66.07	82.73	-16.66	-20%	-23.66	-26%	4.87	4.07	4.84	-0.77	-16%	-1	-16%	2,482.14	2,255.81	2,256.37	-5.56	0%	-226.33	-9%	
Juniors	3,976.33	3,960.66	3,341.82	618.84	19%	-15.67	0%	135.26	130.33	113.46	16.87	15%	-4.93	-4%	9.00	18.53	6.78	11.75	173%	10	106%	4,120.59	4,109.52	3,462.06	647.46	19%	-11.07	0%	
Seniors	4,612.73	4,393.80	5,093.87	-700.07	-14%	-218.93	-5%	193.13	179.93	224.25	-44.32	-20%	-13.20	-7%	13.73	12.07	10.65	1.42	13%	-2	-12%	4,819.59	4,585.80	5,328.77	-742.97	-14%	-233.79	-5%	
PostBac	11.80	8.20	23.38	-15.18	-65%	-3.60	-31%	0.93	2.40	3.41	-1.01	-30%	1.47	158%	0.00	0.00	1.29	-1.29	-100%	0	-	12.73	10.60	28.08	-17.48	-62%	-2.13	-17%	
PostBac Cr	282.53	227.60	307.14	-79.54	-26%	-54.93	-19%	0.00	0.00	0.00	0.00	-	0.00	-	0.00	0.00	0.00	0.00	-	0	-	282.53	227.60	307.14	-79.54	-26%	-54.93	-19%	
Masters	935.25	992.09	1,203.63	-211.54	-18%	56.84	6%	87.83	57.08	153.53	-96.45	-63%	-30.75	-35%	9.67	12.83	8.50	4.33	51%	3	33%	1,032.75	1,062.00	1,365.66	-303.66	-22%	29.25	3%	
Doctoral	35.17	39.92	53.14	-13.22	-25%	4.75	14%	0.00	0.75	0.40	0.35	87%	0.75	-	0.00	0.00	0.00	0.00	-	0	-	35.17	40.67	53.54	-12.87	-24%	5.50	16%	
Return fr Absence	3.73	1.95	7.07	-5.12	-72%	-1.78	-48%	0.27	0.00	2.83	-2.83	-100%	-0.27	-100%	0.00	0.00	0.00	0.00	-	0	-	4.00	1.95	9.91	-7.96	-80%	-2.05	-51%	
Transitory	9.93	12.93	61.90	-48.97	-79%	3.00	30%	14.80	6.33	19.98	-13.65	-68%	-8.47	-57%	10.67	6.27	10.24	-3.97	-39%	-4	-41%	35.40	25.53	92.12	-66.59	-72%	-9.87	-28%	
<b>Total FTES</b>	14,808.07	14,387.42	14,522.42	-135.00	-1%	-420.65	-3%	570.29	467.42	684.99	-217.57	-32%	-102.87	-18%	52.20	55.97	44.67	11.30	25%	4	7%	15,430.56	14,910.81	15,252.08	-341.27	-2%	-519.75	-3%	
<b>Mean Unit Load</b>																													
FT Freshmen	-	-	13.26	-	-	-	-	12.00	7.95	14.20	-6.25	-44%	-4.05	-33.8%	-	-	12.80	-	-	-	-	12.00	7.95	14.02	-6.07	-43%	-4.05	-33.8%	
Freshmen	13.89	14.11	13.26	0.85	6%	0.22	1.6%	12.80	13.27	14.38	-1.12	-8%	0.47	3.7%	12.44	10.46	12.80	-2.34	-18%	-1.98	-15.9%	13.86	14.09	13.30	0.79	6%	0.23	1.6%	
Sophomores	13.80	13.68	13.26	0.41	3%	-0.13	-0.9%	12.94	12.24	14.25	-2.02	-14%	-0.71	-5.5%	14.61	15.26	12.80	2.46	19%	0.65	4.5%	13.77	13.63	13.30	0.33	3%	-0.14	-1.0%	
Juniors	13.84	13.85	13.26	0.59	4%	0.01	0.1%	14.22	13.33	14.26	-0.93	-7%	-0.89	-6.3%	13.50	14.63	12.80	1.83	14%	1.13	8.4%	13.85	13.84	13.29	0.54	4%	-0.02	-0.1%	
Seniors	13.21	13.10	13.26	-0.17	-1%	-0.12	-0.9%	13.94	13.17	14.24	-1.07	-8%	-0.77	-5.5%	13.73	12.07	12.80	-0.73	-6%	-1.66	-12.1%	13.24	13.10	13.30	-0.21	-2%	-0.15	-1.1%	
PostBac	7.71	7.87	13.26	-5.39	-41%	0.16	2.1%	13.95	12.00	14.76	-2.76	-19%	-1.95	-14.0%	-	12	12.80	-0.80	-6%	-	-	7.89	8.48	13.35	-4.87	-36%	0.60	7.6%	
PostBac Cr	12.65	13.23	13.26	-0.03	0%	0.58	4.6%	-	-	-	-	-	-	-	-	-	-	-	-	-	-	12.65	13.23	13.26	-0.03	0%	0.58	4.6%	
Masters	8.99	9.10	10.61	-1.51	-14%	0.11	1.2%	9.94	8.25	11.40	-3.15	-28%	-1.69	-17.0%	8.29	9.62	10.24	-0.62	-6%	1.33	16.1%	9.06	9.05	10.69	-1.64	-15%	0.00	0.0%	
Doctoral	7.96	7.26	10.61	-3.35	-32%	-0.70	-8.9%	-	9.00	11.33	-2.33	-21%	-	-	-	-	-	-	-	-	-	7.96	7.28	10.62	-3.33	-31%	-0.68	-8.5%	
<b>Total</b>	13.22	13.20	13.03	0.17	1%	-0.02	-0.2%	13.04	12.32	13.62	-1.30	-10%	-0.72	-5.5%	12.16	12.14	12.32	-0.18	-1%	-0.02	-0.2%	13.21	13.17	13.06	0.11	1%	-0.05	-0.3%	
<b>FTES College of Disc</b>																													
A&L	3,244.57	3,023.08				-221.49	-7%	71.47	63.93				-7.54	-11%	11.07	13.73				2.66	24%	3,327.11	3,100.74				-226.37	-7%	
BPA	1,979.27	2,001.77				22.50	1%	263.40	229.53				-33.87	-13%	12.47	10.67				-1.80	-14%	2,255.14	2,241.97				-13.17	-1%	
Educ	786.40	713.32				-73.08	-9%	23.33	14.88				-8.45	-36%	2.67	3.07				0.40	15%	812.40	731.27				-81.13	-10%	
NSci	4,283.45	4,302.08				18.63	0%	130.03	102.42				-27.61	-21%	10.73	16.07				5.34	50%	4,424.21	4,420.57				-3.64	0%	
SBS	4,481.47	4,300.03				-181.44	-4%	82.07	56.67				-25.40	-31%	15.27	12.43				-2.84	-19%	4,578.81	4,369.13				-209.68	-5%	
UNV	32.93	47.13				14.20	43%	0.00	0.00				0.00	0%	0.00	0.00				0.00	0%	32.93	47.13				14.20	43%	
<b>Total</b>	14,808.09	14,387.41				-420.68	-3%	570.3																					







Comparing 3/13/2018 to 3/12/2019 41 Days to Spring 2019 Census on: 4/22/2019

	Resident							Non-Resident Foreign					Non-Resident USA					Total											
	2018	2019	Trgt	Trgt Δ	Trgt % Δ	N Δ	% Δ	2018	2019	Trgt	Trgt Δ	Trgt % Δ	N Δ	% Δ	2018	2019	Trgt	Trgt Δ	Trgt % Δ	N Δ	% Δ	2018	2019	Trgt	Trgt Δ	Trgt % Δ	N Δ	% Δ	
<b>New Students</b>																													
FT Freshmen	0	0	4	-4	-100%	0	-	3	1	20	-19	-95%	-2	-67%	0	0	1	-1	-100%	0	-	3	1	24	-23	-96%	-2	-67%	
LD Transfer	0	0	2	-2	-100%	0	-	4	6	3	3	100%	2	50%	0	0	0	0	-	0	-	4	6	5	1	20%	2	50%	
UD Transfer	2	10	7	3	43%	8	400%	8	2	18	-16	-89%	-6	-75%	0	1	0	1	-	1	-	10	13	25	-12	-48%	3	30%	
PostBac	1	1	0	1	-	0	0%	0	0	2	-2	-100%	0	-	0	0	0	0	-100%	0	-	1	1	2	-1	-50%	0	0%	
PostBac Cr	6	4	19	-15	-79%	-2	-33%	0	0	0	0	-	0	-	0	0	0	0	-	0	-	6	4	19	-15	-79%	-2	-33%	
Masters	50	48	56	-8	-14%	-2	-4%	2	3	23	-20	-87%	1	50%	0	0	1	-1	-100%	0	-	52	51	80	-29	-36%	-1	-2%	
Doctoral	0	0	0	0	-	0	-	0	0	0	0	-	0	-	0	0	0	0	-	0	-	0	0	0	0	0	0	0%	
<b>Total</b>	59	63	88	-25	-28%	4	7%	17	12	65	-53	-82%	-5	-29%	0	1	2	-1	-43%	1	-	76	76	155	-79	-51%	0	0%	
<b>Continue/Return</b>																													
Freshmen	2,709	2,689	2,552	137	5%	-20	-1%	49	26	70	-44	-63%	-23	-47%	4	2	2	0	-12%	-2	-50%	2,762	2,717	2,624	93	4%	-45	-2%	
Sophomores	2,566	2,374	2,453	-79	-3%	-192	-7%	98	76	84	-8	-10%	-22	-22%	5	4	6	-2	-30%	-1	-20%	2,669	2,454	2,542	-88	-3%	-215	-8%	
Juniors	4,271	4,256	3,773	483	13%	-15	0%	138	142	115	27	23%	4	3%	11	17	8	9	114%	6	55%	4,420	4,415	3,897	518	13%	-5	0%	
Seniors	5,213	5,006	5,760	-754	-13%	-207	-4%	202	203	222	-19	-9%	1	0%	14	15	12	3	20%	1	7%	5,429	5,224	5,994	-770	-13%	-205	-4%	
PostBac	17	13	26	-13	-51%	-4	-24%	1	3	2	1	63%	2	200%	1	0	1	-1	-100%	-1	-100%	19	16	29	-13	-46%	-3	-16%	
PostBac Cr	320	248	328	-80	-24%	-72	-23%	0	0	0	0	-	0	-	0	0	0	0	-	0	-	320	248	328	-80	-24%	-72	-23%	
Masters	1,153	1,195	1,305	-110	-8%	42	4%	97	72	138	-66	-48%	-25	-26%	13	15	9	6	65%	2	15%	1,263	1,282	1,453	-171	-12%	19	2%	
Doctoral	50	66	60	6	10%	16	32%	0	0	0	0	-100%	0	-	0	0	0	0	-	0	-	50	66	61	5	9%	16	32%	
Return fr Absence	4	2	8	-6	-75%	-2	-50%	0	0	3	-3	-100%	0	-	0	0	0	0	-	0	-	4	2	11	-9	-82%	-2	-50%	
Transitory	21	35	70	-35	-50%	14	67%	18	8	20	-12	-60%	-10	-56%	13	9	12	-3	-25%	-4	-31%	52	52	102	-50	-49%	0	0%	
<b>Total</b>	16,324	15,884	16,335	-451	-3%	-440	-3%	603	530	655	-125	-19%	-73	-12%	61	62	51	11	23%	1	2%	16,988	16,476	17,041	-565	-3%	-512	-3%	
<b>Total Headcount</b>	16,383	15,947	16,423	-476	-3%	-436	-3%	620	542	720	-178	-25%	-78	-13%	61	63	52	11	20%	2	3%	17,064	16,552	17,196	-644	-4%	-512	-3%	
<b>FTES All Students</b>																													
FT Freshmen	0.00	0.00	3.54	-3.54	-100%	0.00	-	2.40	0.27	18.46	-18.19	-99%	-2.13	-89%	0.00	0.00	0.43	-0.43	-100%	0	-	2.40	0.27	22.43	-22.16	-99%	-2.13	-89%	
Freshmen	2,513.27	2,533.00	2,258.14	274.86	12%	19.73	1%	44.34	23.46	65.93	-42.47	-64%	-20.88	-47%	4.00	2.20	1.94	0.26	14%	-2	-45%	2,561.61	2,558.66	2,326.01	232.65	10%	-2.95	0%	
Sophomores	2,361.87	2,162.53	2,168.80	-6.27	0%	-199.34	-8%	86.20	64.47	82.73	-18.26	-22%	-21.73	-25%	4.87	4.07	4.84	-0.77	-16%	-1	-16%	2,452.94	2,231.07	2,256.37	-25.30	-1%	-221.87	-9%	
Juniors	3,940.93	3,934.40	3,341.82	592.58	18%	-6.53	0%	132.73	129.13	113.46	15.67	14%	-3.60	-3%	9.93	17.47	6.78	10.69	158%	8	76%	4,083.59	4,081.00	3,462.06	618.94	18%	-2.59	0%	
Seniors	4,579.93	4,360.87	5,093.87	-733.00	-14%	-219.06	-5%	191.06	177.47	224.25	-46.78	-21%	-13.59	-7%	12.60	12.07	10.65	1.42	13%	-1	-4%	4,783.59	4,550.41	5,328.77	-778.36	-15%	-233.18	-5%	
PostBac	11.07	8.20	23.38	-15.18	-65%	-2.87	-26%	0.93	2.40	3.41	-1.01	-30%	1.47	158%	0.40	0.00	1.29	-1.29	-100%	0	-100%	12.40	10.60	28.08	-17.48	-62%	-1.80	-15%	
PostBac Cr	275.60	184.33	307.14	-122.81	-40%	-91.27	-33%	0.00	0.00	0.00	0.00	-	0.00	-	0.00	0.00	0.00	0.00	-	0	-	275.60	184.33	307.14	-122.81	-40%	-91.27	-33%	
Masters	899.34	946.50	1,203.63	-257.13	-21%	47.16	5%	83.17	52.75	153.53	-100.78	-66%	-30.42	-37%	9.00	11.83	8.50	3.33	39%	3	31%	991.51	1,011.08	1,365.66	-354.58	-26%	19.57	2%	
Doctoral	33.75	39.17	53.14	-13.97	-26%	5.42	16%	0.00	0.00	0.40	-0.40	-100%	0.00	-	0.00	0.00	0.00	0.00	-	0	-	33.75	39.17	53.54	-14.37	-27%	5.42	16%	
Return fr Absence	2.47	1.95	7.07	-5.12	-72%	-0.52	-21%	0.00	0.00	2.83	-2.83	-100%	0.00	-	0.00	0.00	0.00	0.00	-	0	-	2.47	1.95	9.91	-7.96	-80%	-0.52	-21%	
Transitory	8.47	11.07	61.90	-50.83	-82%	2.60	31%	14.00	6.33	19.98	-13.65	-68%	-7.67	-55%	10.80	5.33	10.24	-4.91	-48%	-5	-51%	33.27	22.73	92.12	-69.39	-75%	-10.54	-32%	
<b>Total FTES</b>	14,626.70	14,182.02	14,522.42	-340.40	-2%	-444.68	-3%	554.83	456.28	684.99	-228.71	-33%	-98.55	-18%	51.60	52.97	44.67	8.30	19%	1	3%	15,233.13	14,691.27	15,252.08	-560.81	-4%	-541.86	-4%	
<b>Mean Unit Load</b>																													
FT Freshmen	-	-	13.26	-	-	-	-	12.00	4.05	14.20	-10.15	-71%	-7.95	-66.3%	-	-	12.80	-	-	-	-	12.00	4.05	14.02	-9.97	-71%	-7.95	-66.3%	
Freshmen	13.90	14.10	13.26	0.84	6%	0.20	1.4%	12.82	13.03	14.38	-1.36	-9%	0.21	1.6%	13.06	10.10	12.80	-2.71	-21%	-2.96	-22.7%	13.87	14.07	13.30	0.77	6%	0.20	1.4%	
Sophomores	13.80	13.63	13.26	0.36	3%	-0.17	-1.2%	12.80	11.94	14.25	-2.32	-16%	-0.86	-6.7%	14.61	15.26	12.80	2.46	19%	0.65	4.5%	13.76	13.57	13.30	0.28	2%	-0.19	-1.4%	
Juniors	13.83	13.82	13.26	0.56	4%	-0.01	-0.1%	14.12	13.39	14.26	-0.87	-6%	-0.73	-5.2%	13.54	14.56	12.80	1.76	14%	1.02	7.5%	13.84	13.81	13.29	0.52	4%	-0.03	-0.2%	
Seniors	13.17	13.06	13.26	-0.21	-2%	-0.11	-0.9%	13.86	13.11	14.24	-1.12	-8%	-0.74	-5.4%	13.50	12.07	12.80	-0.73	-6%	-1.43	-10.6%	13.20	13.06	13.30	-0.24	-2%	-0.14	-1.1%	
PostBac	8.18	8.05	13.26	-5.22	-39%	-0.13	-1.6%	13.95	12.00	14.76	-2.76	-19%	-1.95	-14.0%	6.00	12	12.80	-0.80	-6%	6.00	100.0%	8.30	8.65	13.35	-4.70	-35%	0.35	4.3%	
PostBac Cr	12.68	10.97	13.26	-2.29	-17%	-1.71	-13.5%	-	-	-	-	-	-	-	-	-	-	-	-	-	-	12.68	10.97	13.26	-2.29	-17%	-1.71	-13.5%	
Masters	8.97	9.14	10.61	-1.47	-14%	0.17	1.9%	10.08	8.44	11.40	-2.96	-26%	-1.64	-16.3%	8.31	9.46	10.24	-0.78	-8%	1.16	13.9%	9.05	9.10	10.69	-1.59	-15%	0.06	0.6%	
Doctoral	8.10	7.12	10.61	-3.49	-33%	-0.98	-12.1%	-	-	11.33	-	-	-	-	-	-	-	-	-	-	-	8.10	7.12	10.62	-3.49	-33%	-0.98	-12.1%	
<b>Total</b>	13.22	13.15	13.03	0.12	1%	-0.07	-0.5%	13.02	12.34	13.62	-1.28	-9%	-0.68	-5.3%	12.25	12.05	12.32	-0.27	-2%	-0.20	-1.6%	13.21	13.12	13.06	0.07	1%	-0.09	-0.7%	
<b>FTES College of Disc</b>																													
A&L	3,209.85	2,992.73				-217.12	-7%	70.27	61.80				-8.47	-12%	10.60	12.60				2.00	19%	3,290.72	3,067.13				-223.59	-7%	
BPA	1,960.47	1,982.70				22.23	1%	257.43	223.73				-33.70	-13%	11.87	10.67				-1.20	-10%	2,229.77	2,217.10				-12.67	-1%	
Educ	764.45	652.08				-112.37	-15%	20.67	13.67				-7.00	-34%	2.33	3.07				0.74	32%	787.45	668.82				-118.63	-15%	
NSci	4,244.12	4,258.42				14.30	0%	127.13	101.22				-25.91	-20%	12.07	14.47				2.40	20%	4,383.32	4,374.11				-9.21	0%	
SBS	4,416.00	4,249.55				-166.45	-4%	79.33	55.87				-23.46	-30%	14.73	12.17				-2.56	-17%	4,510.06	4,317.59				-192.47	-4%	
UNV	31.80	46.53				14.73	46%	0.00	0.00				0.00	0%	0.00	0.00				0.00	0%	31.80	46.53				14.73	46%	
<b>Total</b>	14,626.69	14,182.01				-444																							

Comparing 3/12/2018 to 3/11/2019		42 Days to Spring 2019 Census on: 4/22/2019																											
		Resident						Non-Resident Foreign						Non-Resident USA						Total									
		2018	2019	Trgt	Trgt Δ	Trgt % Δ	N Δ	% Δ	2018	2019	Trgt	Trgt Δ	Trgt % Δ	N Δ	% Δ	2018	2019	Trgt	Trgt Δ	Trgt % Δ	N Δ	% Δ	2018	2019	Trgt	Trgt Δ	Trgt % Δ	N Δ	% Δ
<b>New Students</b>																													
FT Freshmen	0	0	4	-4	-100%	0	-	3	0	20	-20	-100%	-3	-100%	0	0	1	-1	-100%	0	-	3	0	24	-24	-100%	-3	-100%	
LD Transfer	0	0	2	-2	-100%	0	-	4	6	3	3	100%	2	50%	0	0	0	0	-	0	-	4	6	5	1	20%	2	50%	
UD Transfer	2	10	7	3	43%	8	400%	8	2	18	-16	-89%	-6	-75%	0	1	0	1	-	1	-	10	13	25	-12	-48%	3	30%	
PostBac	1	1	0	1	-	0	0%	0	0	2	-2	-100%	0	-	0	0	0	0	-100%	0	-	1	1	2	-1	-50%	0	0%	
PostBac Cr	6	4	19	-15	-79%	-2	-33%	0	0	0	0	-	0	-	0	0	0	0	-	0	-	6	4	19	-15	-79%	-2	-33%	
Masters	45	45	56	-11	-20%	0	0%	2	3	23	-20	-87%	1	50%	0	0	1	-1	-100%	0	-	47	48	80	-32	-40%	1	2%	
Doctoral	0	0	0	0	-	0	-	0	0	0	0	-	0	-	0	0	0	0	-	0	-	0	0	0	0	-	0	-	
Total	54	60	88	-28	-32%	6	11%	17	11	65	-54	-83%	-6	-35%	0	1	2	-1	-43%	1	-	71	72	155	-83	-54%	1	1%	
<b>Continue/Return</b>																													
Freshmen	2,689	2,674	2,552	122	5%	-15	-1%	49	26	70	-44	-63%	-23	-47%	4	2	2	0	-12%	-2	-50%	2,742	2,702	2,624	78	3%	-40	-1%	
Sophomores	2,562	2,368	2,453	-85	-3%	-194	-8%	97	76	84	-8	-10%	-21	-22%	5	4	6	-2	-30%	-1	-20%	2,664	2,448	2,542	-94	-4%	-216	-8%	
Juniors	4,263	4,248	3,773	475	13%	-15	0%	138	142	115	27	23%	4	3%	11	17	8	9	114%	6	55%	4,412	4,407	3,897	510	13%	-5	0%	
Seniors	5,207	4,995	5,760	-765	-13%	-212	-4%	202	203	222	-19	-9%	1	0%	14	15	12	3	20%	1	7%	5,423	5,213	5,994	-781	-13%	-210	-4%	
PostBac	17	13	26	-13	-51%	-4	-24%	1	3	2	1	63%	2	200%	1	0	1	-1	-100%	-1	-100%	19	16	29	-13	-46%	-3	-16%	
PostBac Cr	315	247	328	-81	-25%	-68	-22%	0	0	0	0	-	0	-	0	0	0	0	-	0	-	315	247	328	-81	-25%	-68	-22%	
Masters	1,143	1,186	1,305	-119	-9%	43	4%	98	71	138	-67	-49%	-27	-28%	12	15	9	6	65%	3	25%	1,253	1,272	1,453	-181	-12%	19	2%	
Doctoral	50	66	60	6	10%	16	32%	0	0	0	0	-100%	0	-	0	0	0	0	-	0	-	50	66	61	5	9%	16	32%	
Return fr Absence	4	2	8	-6	-75%	-2	-50%	0	0	3	-3	-100%	0	-	0	0	0	0	-	0	-	4	2	11	-9	-82%	-2	-50%	
Transitory	17	35	70	-35	-50%	18	106%	18	8	20	-12	-60%	-10	-56%	12	8	12	-4	-33%	-4	-33%	47	51	102	-51	-50%	4	9%	
Total	16,267	15,834	16,335	-501	-3%	-433	-3%	603	529	655	-126	-19%	-74	-12%	59	61	51	10	21%	2	3%	16,929	16,424	17,041	-617	-4%	-505	-3%	
<b>Total Headcount</b>	<b>16,321</b>	<b>15,894</b>	<b>16,423</b>	<b>-529</b>	<b>-3%</b>	<b>-427</b>	<b>-3%</b>	<b>620</b>	<b>540</b>	<b>720</b>	<b>-180</b>	<b>-25%</b>	<b>-80</b>	<b>-13%</b>	<b>59</b>	<b>62</b>	<b>52</b>	<b>10</b>	<b>18%</b>	<b>3</b>	<b>5%</b>	<b>17,000</b>	<b>16,496</b>	<b>17,196</b>	<b>-700</b>	<b>-4%</b>	<b>-504</b>	<b>-3%</b>	
<b>FTES All Students</b>																													
FT Freshmen	0.00	0.00	3.54	-3.54	-100%	0.00	-	2.53	0.00	18.46	-18.46	-100%	-2.53	-100%	0.00	0.00	0.43	-0.43	-100%	0	-	2.53	0.00	22.43	-22.43	-100%	-2.53	-100%	
Freshmen	2,496.40	2,517.00	2,258.14	258.86	11%	20.60	1%	44.34	23.13	65.93	-42.80	-65%	-21.21	-48%	4.00	2.20	1.94	0.26	14%	-2	-45%	2,544.74	2,542.33	2,326.01	216.32	9%	-2.41	0%	
Sophomores	2,356.00	2,156.07	2,168.80	-12.73	-1%	-199.93	-8%	85.67	64.20	82.73	-18.53	-22%	-21.47	-25%	4.87	4.07	4.84	-0.77	-16%	-1	-16%	2,446.54	2,224.34	2,256.37	-32.03	-1%	-222.20	-9%	
Juniors	3,930.80	3,927.00	3,341.82	585.18	18%	-3.80	0%	132.47	128.33	113.46	14.87	13%	-4.14	-3%	9.93	17.47	6.78	10.69	158%	8	76%	4,073.20	4,072.80	3,462.06	610.74	18%	-0.40	0%	
Seniors	4,569.80	4,351.87	5,093.87	-742.00	-15%	-217.93	-5%	190.80	176.60	224.25	-47.65	-21%	-14.20	-7%	12.60	12.07	10.65	1.42	13%	-1	-4%	4,773.20	4,540.54	5,328.77	-788.23	-15%	-232.66	-5%	
PostBac	11.06	8.20	23.38	-15.18	-65%	-2.86	-26%	0.93	2.40	3.41	-1.01	-30%	1.47	158%	0.40	0.00	1.29	-1.29	-100%	0	-100%	12.39	10.60	28.08	-17.48	-62%	-1.79	-14%	
PostBac Cr	270.33	184.33	307.14	-122.81	-40%	-86.00	-32%	0.00	0.00	0.00	0.00	-	0.00	-	0.00	0.00	0.00	0.00	-	0	-	270.33	184.33	307.14	-122.81	-40%	-86.00	-32%	
Masters	888.33	937.67	1,203.63	-265.96	-22%	49.34	6%	84.17	53.92	153.53	-99.61	-65%	-30.25	-36%	8.67	11.83	8.50	3.33	39%	3	36%	981.17	1,003.42	1,365.66	-362.24	-27%	22.25	2%	
Doctoral	33.75	39.17	53.14	-13.97	-26%	5.42	16%	0.00	0.00	0.40	-0.40	-100%	0.00	-	0.00	0.00	0.00	0.00	-	0	-	33.75	39.17	53.54	-14.37	-27%	5.42	16%	
Return fr Absence	2.13	1.20	7.07	-5.87	-83%	-0.93	-44%	0.00	0.00	2.83	-2.83	-100%	0.00	-	0.00	0.00	0.00	0.00	-	0	-	2.13	1.20	9.91	-8.71	-88%	-0.93	-44%	
Transitory	6.60	10.53	61.90	-51.37	-83%	3.93	60%	14.00	6.33	19.98	-13.65	-68%	-7.67	-55%	9.87	4.80	10.24	-5.44	-53%	-5	-51%	30.47	21.66	92.12	-70.46	-76%	-8.81	-29%	
Total FTES	14,565.20	14,133.04	14,522.42	-389.38	-3%	-432.16	-3%	554.91	454.91	684.99	-230.08	-34%	-100.00	-18%	50.34	52.44	44.67	7.77	17%	2	4%	15,170.45	14,640.39	15,252.08	-611.69	-4%	-530.06	-3%	
<b>Mean Unit Load</b>																													
FT Freshmen	-	-	13.26	-	-	-	-	12.65	-	14.20	-	-	-	-	-	-	12.80	-	-	-	-	12.65	-	14.02	-	-	-	-	
Freshmen	13.92	14.09	13.26	0.82	6%	0.17	1.2%	12.82	12.88	14.38	-1.50	-10%	0.06	0.5%	13.00	10.50	12.80	-2.30	-18%	-2.50	-19.3%	13.88	14.06	13.30	0.76	6%	0.18	1.3%	
Sophomores	13.79	13.62	13.26	0.36	3%	-0.17	-1.2%	12.85	11.89	14.25	-2.37	-17%	-0.96	-7.5%	14.61	15.26	12.80	2.46	19%	0.65	4.5%	13.75	13.57	13.30	0.27	2%	-0.19	-1.4%	
Juniors	13.82	13.82	13.26	0.56	4%	0.00	0.0%	14.09	13.30	14.26	-0.95	-7%	-0.79	-5.6%	13.54	14.56	12.80	1.76	14%	1.02	7.5%	13.83	13.81	13.29	0.51	4%	-0.02	-0.2%	
Seniors	13.16	13.06	13.26	-0.20	-2%	-0.10	-0.7%	13.84	13.05	14.24	-1.19	-8%	-0.79	-5.7%	13.50	12.07	12.80	-0.73	-6%	-1.43	-10.6%	13.18	13.06	13.30	-0.25	-2%	-0.13	-1.0%	
PostBac	8.36	7.86	13.26	-5.41	-41%	-0.50	-6.0%	13.95	12.00	14.76	-2.76	-19%	-1.95	-14.0%	6.00	-	12.80	-	-	-	-	8.48	8.38	13.35	-4.98	-37%	-0.11	-1.3%	
PostBac Cr	12.63	11.02	13.26	-2.25	-17%	-1.62	-12.8%	-	-	-	-	-	-	-	-	-	-	-	-	-	-	12.63	11.02	13.26	-2.25	-17%	-1.62	-12.8%	
Masters	8.97	9.14	10.61	-1.47	-14%	0.17	1.8%	10.10	8.74	11.40	-2.66	-23%	-1.36	-13.4%	8.67	9.46	10.24	-0.78	-8%	0.79	9.2%	9.05	9.12	10.69	-1.57	-15%	0.06	0.7%	
Doctoral	8.10	7.12	10.61	-3.49	-33%	-0.98	-12.1%	-	-	11.33	-	-	-	-	-	-	-	-	-	-	-	8.10	7.12	10.62	-3.49	-33%	-0.98	-12.1%	
Total	13.22	13.15	13.03	0.12	1%	-0.06	-0.5%	13.02	12.34	13.62	-1.28	-9%	-0.68	-5.2%	12.36	12.11	12.32	-0.20	-2%	-0.24	-2.0%	13.21	13.12	13.06	0.07	1%	-0.08	-0.6%	
<b>FTES College of Disc</b>																													
A&L	3,193.52	2,985.83	-	-	-	-207.69	-7%	70.00	61.00	-	-	-	-9.00	-13%	10.33	12.60	-	-	-	2.27	22%	3,273.85	3,059.43	-	-	-	-214.42	-7%	
BPA	1,953.80	1,976.83	-	-	-	23.03	1%	256.90	223.87	-	-	-	-33.03	-13%	11.87	10.67	-	-	-	-1.20	-10%	2,222.57	2,211.37	-	-	-	-11.20	-1%	
Educ	753.85	645.72	-	-	-	-108.13	-14%	21.67	14.27	-	-	-	-7.40	-34%	2.33	2.27	-	-	-	-0.06	-3%	777.85	662.26	-	-	-	-115.59	-15%	
NSci	4,231.95	4,249.02	-	-	-	17.07	0%	127.27	100.42	-	-	-	-26.85	-21%	12.07	14.47	-	-	-	2.40	20%	4,371.29	4,363.91	-	-	-	-7.38	0%	
SBS	4,400.23	4,229.10	-	-	-	-171.13	-4%	79.07	55.37	-	-	-	-23.70	-30%	13.73	12.43	-	-	-	-1.30	-9%	4,493.03	4,296.90	-	-	-	-196.13	-4%	
UNV	31.87	46.53	-	-	-	14.66	46%	0.00	0.00	-	-	-	0.00	0%	0.00	0.00	-	-	-	0.00	0%	31.87	46.53	-	-	-	14.66	46%	
Total	14,565.22	14,133.03	-	-	-	-432.19	-3%	554.91	454.93	-	-	-	-99.98	-18%	50.33	52.44	-	-	-	2.11	4%	15,170.46	14,640.40	-	-	-	-530.06	-3%	
<b>FTES</b>																													
College Year	Summer	Fall	Winter	Spring	CY	CO	up/down	Summer	Fall	Winter	Spring	CY	Summer	Fall	Winter	Spring	CY	Summer	Fall	Winter	Spring	CY	Summer	Fall	Winter	Spring	CY		
2013-14 Actual	1730.23	15277.16	14171.37	13155.70	14778.15	14016	762.15	248.69	775.80	751.62	779.																		

Comparing 3/09/2018 to 3/08/2019 45 Days to Spring 2019 Census on: 4/22/2019

	Resident							Non-Resident Foreign					Non-Resident USA					Total											
	2018	2019	Trgt	Trgt Δ	Trgt % Δ	N Δ	% Δ	2018	2019	Trgt	Trgt Δ	Trgt % Δ	N Δ	% Δ	2018	2019	Trgt	Trgt Δ	Trgt % Δ	N Δ	% Δ	2018	2019	Trgt	Trgt Δ	Trgt % Δ	N Δ	% Δ	
<b>New Students</b>																													
FT Freshmen	1	0	4	-4	-100%	-1	-100%	3	0	20	-20	-100%	-3	-100%	0	0	1	-1	-100%	0	-	4	0	24	-24	-100%	-4	-100%	
LD Transfer	0	0	2	-2	-100%	0	-	4	3	3	0	0%	-1	-25%	0	0	0	0	-	0	-	4	3	5	-2	-40%	-1	-25%	
UD Transfer	2	10	7	3	43%	8	400%	7	2	18	-16	-89%	-5	-71%	0	1	0	1	-	1	-	9	13	25	-12	-48%	4	44%	
PostBac	1	1	0	1	-	0	0%	0	0	2	-2	-100%	0	-	0	0	0	0	-100%	0	-	1	1	2	-1	-50%	0	0%	
PostBac Cr	4	4	19	-15	-79%	0	0%	0	0	0	0	-	0	-	0	0	0	0	-	0	-	4	4	19	-15	-79%	0	0%	
Masters	44	42	56	-14	-25%	-2	-5%	2	2	23	-21	-91%	0	0%	0	1	1	0	14%	1	-	46	45	80	-35	-44%	-1	-2%	
Doctoral	0	0	0	0	-	0	-	0	0	0	0	-	0	-	0	0	0	0	-	0	-	0	0	0	0	-	0	-	
<b>Total</b>	<b>52</b>	<b>57</b>	<b>88</b>	<b>-31</b>	<b>-35%</b>	<b>5</b>	<b>10%</b>	<b>16</b>	<b>7</b>	<b>65</b>	<b>-58</b>	<b>-89%</b>	<b>-9</b>	<b>-56%</b>	<b>0</b>	<b>2</b>	<b>2</b>	<b>0</b>	<b>14%</b>	<b>2</b>	<b>-</b>	<b>68</b>	<b>66</b>	<b>155</b>	<b>-89</b>	<b>-57%</b>	<b>-2</b>	<b>-3%</b>	
<b>Continue/Return</b>																													
Freshmen	2,659	2,660	2,552	108	4%	1	0%	47	26	70	-44	-63%	-21	-45%	4	2	2	0	-12%	-2	-50%	2,710	2,688	2,624	64	2%	-22	-1%	
Sophomores	2,547	2,361	2,453	-92	-4%	-186	-7%	97	74	84	-10	-12%	-23	-24%	5	4	6	-2	-30%	-1	-20%	2,649	2,439	2,542	-103	-4%	-210	-8%	
Juniors	4,250	4,234	3,773	461	12%	-16	0%	138	141	115	26	22%	3	2%	11	17	8	9	114%	6	55%	4,399	4,392	3,897	495	13%	-7	0%	
Seniors	5,193	4,982	5,760	-778	-14%	-211	-4%	202	203	222	-19	-9%	1	0%	14	15	12	3	20%	1	7%	5,409	5,200	5,994	-794	-13%	-209	-4%	
PostBac	16	13	26	-13	-51%	-3	-19%	1	3	2	1	63%	2	200%	1	0	1	-1	-100%	-1	-100%	18	16	29	-13	-46%	-2	-11%	
PostBac Cr	309	241	328	-87	-27%	-68	-22%	0	0	0	0	-	0	-	0	0	0	0	-	0	-	309	241	328	-87	-27%	-68	-22%	
Masters	1,119	1,159	1,305	-146	-11%	40	4%	96	71	138	-67	-49%	-25	-26%	12	15	9	6	65%	3	25%	1,227	1,245	1,453	-208	-14%	18	1%	
Doctoral	50	62	60	2	3%	12	24%	0	0	0	0	-100%	0	-	0	0	0	0	-	0	-	50	62	61	1	2%	12	24%	
Return fr Absence	4	1	8	-7	-88%	-3	-75%	0	0	3	-3	-100%	0	-	0	0	0	0	-	0	-	4	1	11	-10	-91%	-3	-75%	
Transitory	16	26	70	-44	-63%	10	63%	18	8	20	-12	-60%	-10	-56%	12	7	12	-5	-42%	-5	-42%	46	41	102	-61	-60%	-5	-11%	
<b>Total</b>	<b>16,163</b>	<b>15,739</b>	<b>16,335</b>	<b>-596</b>	<b>-4%</b>	<b>-424</b>	<b>-3%</b>	<b>599</b>	<b>526</b>	<b>655</b>	<b>-129</b>	<b>-20%</b>	<b>-73</b>	<b>-12%</b>	<b>59</b>	<b>60</b>	<b>51</b>	<b>9</b>	<b>19%</b>	<b>1</b>	<b>2%</b>	<b>16,821</b>	<b>16,325</b>	<b>17,041</b>	<b>-716</b>	<b>-4%</b>	<b>-496</b>	<b>-3%</b>	
<b>Total Headcount</b>	<b>16,215</b>	<b>15,796</b>	<b>16,423</b>	<b>-627</b>	<b>-4%</b>	<b>-419</b>	<b>-3%</b>	<b>615</b>	<b>533</b>	<b>720</b>	<b>-187</b>	<b>-26%</b>	<b>-82</b>	<b>-13%</b>	<b>59</b>	<b>62</b>	<b>52</b>	<b>10</b>	<b>18%</b>	<b>3</b>	<b>5%</b>	<b>16,889</b>	<b>16,391</b>	<b>17,196</b>	<b>-805</b>	<b>-5%</b>	<b>-498</b>	<b>-3%</b>	
<b>FTES All Students</b>																													
FT Freshmen	0.53	0.00	3.54	-3.54	-100%	-0.53	-100%	2.27	0.00	18.46	-18.46	-100%	-2.27	-100%	0.00	0.00	0.43	-0.43	-100%	0	-	2.80	0.00	22.43	-22.43	-100%	-2.80	-100%	
Freshmen	2,472.60	2,502.73	2,258.14	244.59	11%	30.13	1%	42.47	22.87	65.93	-43.06	-65%	-19.60	-46%	4.00	2.20	1.94	0.26	14%	-2	-45%	2,519.07	2,527.80	2,326.01	201.79	9%	8.73	0%	
Sophomores	2,341.14	2,146.20	2,168.80	-22.60	-1%	-194.94	-8%	85.00	61.07	82.73	-21.66	-26%	-23.93	-28%	4.87	4.07	4.84	-0.77	-16%	-1	-16%	2,431.01	2,211.34	2,256.37	-45.03	-2%	-219.67	-9%	
Juniors	3,914.87	3,911.06	3,341.82	569.24	17%	-3.81	0%	132.20	127.20	113.46	13.74	12%	-5.00	-4%	9.93	17.47	6.78	10.69	158%	8	76%	4,057.00	4,055.73	3,462.06	593.67	17%	-1.27	0%	
Seniors	4,550.73	4,339.20	5,093.87	-754.67	-15%	-211.53	-5%	190.60	176.33	224.25	-47.92	-21%	-14.27	-7%	12.60	11.73	10.65	1.08	10%	-1	-7%	4,753.93	4,527.26	5,328.77	-801.51	-15%	-226.67	-5%	
PostBac	10.73	8.26	23.38	-15.12	-65%	-2.47	-23%	0.93	2.40	3.41	-1.01	-30%	1.47	158%	0.40	0.00	1.29	-1.29	-100%	0	-100%	12.06	10.66	28.08	-17.42	-62%	-1.40	-12%	
PostBac Cr	265.33	179.27	307.14	-127.87	-42%	-86.06	-32%	0.00	0.00	0.00	0.00	-	0.00	-	0.00	0.00	0.00	0.00	-	0	-	265.33	179.27	307.14	-127.87	-42%	-86.06	-32%	
Masters	875.00	916.42	1,203.63	-287.21	-24%	41.42	5%	81.83	53.58	153.53	-99.95	-65%	-28.25	-35%	9.00	12.50	8.50	4.00	47%	4	39%	965.83	982.50	1,365.66	-383.16	-28%	16.67	2%	
Doctoral	33.75	37.42	53.14	-15.72	-30%	3.67	11%	0.00	0.00	0.40	-0.40	-100%	0.00	-	0.00	0.00	0.00	0.00	-	0	-	33.75	37.42	53.54	-16.12	-30%	3.67	11%	
Return fr Absence	2.47	0.87	7.07	-6.20	-88%	-1.60	-65%	0.00	0.00	2.83	-2.83	-100%	0.00	-	0.00	0.00	0.00	0.00	-	0	-	2.47	0.87	9.91	-9.04	-91%	-1.60	-65%	
Transitory	6.07	8.07	61.90	-53.83	-87%	2.00	33%	14.00	5.80	19.98	-14.18	-71%	-8.20	-59%	9.87	3.87	10.24	-6.37	-62%	-6	-61%	29.94	17.74	92.12	-74.38	-81%	-12.20	-41%	
<b>Total FTES</b>	<b>14,473.22</b>	<b>14,049.50</b>	<b>14,522.42</b>	<b>-472.92</b>	<b>-3%</b>	<b>-423.72</b>	<b>-3%</b>	<b>549.30</b>	<b>449.25</b>	<b>684.99</b>	<b>-235.74</b>	<b>-34%</b>	<b>-100.05</b>	<b>-18%</b>	<b>50.67</b>	<b>51.84</b>	<b>44.67</b>	<b>7.17</b>	<b>16%</b>	<b>1</b>	<b>2%</b>	<b>15,073.19</b>	<b>14,550.59</b>	<b>15,252.08</b>	<b>-701.49</b>	<b>-5%</b>	<b>-522.60</b>	<b>-3%</b>	
<b>Mean Unit Load</b>																													
FT Freshmen	7.95	-	13.26	-	-	-	-	11.35	-	14.20	-	-	-	-	-	-	12.80	-	-	-	-	10.50	-	14.02	-	-	-	-	
Freshmen	13.94	14.09	13.26	0.83	6%	0.15	1.1%	12.78	12.53	14.38	-1.85	-13%	-0.26	-2.0%	13.00	10.12	12.80	-2.69	-21%	-2.89	-22.2%	13.91	14.06	13.30	0.76	6%	0.15	1.1%	
Sophomores	13.78	13.60	13.26	0.34	3%	-0.18	-1.3%	12.75	12.05	14.25	-2.20	-15%	-0.70	-5.5%	14.61	15.26	12.80	2.46	19%	0.65	4.5%	13.74	13.56	13.30	0.26	2%	-0.19	-1.3%	
Juniors	13.81	13.81	13.26	0.55	4%	0.01	0.0%	14.16	13.28	14.26	-0.98	-7%	-0.89	-6.3%	13.54	14.56	12.80	1.76	14%	1.02	7.5%	13.82	13.80	13.29	0.51	4%	-0.02	-0.1%	
Seniors	13.14	13.06	13.26	-0.20	-2%	-0.08	-0.6%	13.82	13.03	14.24	-1.21	-8%	-0.79	-5.7%	13.50	11.73	12.80	-1.07	-8%	-1.77	-13.1%	13.17	13.06	13.30	-0.25	-2%	-0.11	-0.8%	
PostBac	8.69	8.05	13.26	-5.22	-39%	-0.65	-7.4%	13.95	12.00	14.76	-2.76	-19%	-1.95	-14.0%	6.00	-	12.80	-	-	-	-	8.80	8.56	13.35	-4.79	-36%	-0.24	-2.7%	
PostBac Cr	12.72	10.98	13.26	-2.29	-17%	-1.74	-13.7%	-	-	-	-	-	-	-	-	-	-	-	-	-	-	12.72	10.98	13.26	-2.29	-17%	-1.74	-13.7%	
Masters	9.03	9.16	10.61	-1.45	-14%	0.13	1.4%	10.02	8.81	11.40	-2.59	-23%	-1.21	-12.1%	9.00	9.38	10.24	-0.87	-8%	0.38	4.2%	9.11	9.14	10.69	-1.55	-15%	0.03	0.4%	
Doctoral	8.10	7.24	10.61	-3.37	-32%	-0.86	-10.6%	-	-	11.33	-	-	-	-	-	-	-	-	-	-	-	8.10	7.24	10.62	-3.37	-32%	-0.86	-10.6%	
<b>Total</b>	<b>13.22</b>	<b>13.16</b>	<b>13.03</b>	<b>0.13</b>	<b>1%</b>	<b>-0.06</b>	<b>-0.5%</b>	<b>13.00</b>	<b>12.34</b>	<b>13.62</b>	<b>-1.28</b>	<b>-9%</b>	<b>-0.66</b>	<b>-5.1%</b>	<b>12.42</b>	<b>11.94</b>	<b>12.32</b>	<b>-0.38</b>	<b>-3%</b>	<b>-0.49</b>	<b>-3.9%</b>	<b>13.21</b>	<b>13.13</b>	<b>13.06</b>	<b>0.07</b>	<b>1%</b>	<b>-0.08</b>	<b>-0.6%</b>	
<b>FTES College of Disc</b>																													
A&L	3,169.82	2,969.70	-	-	-	-200.12	-6%	69.20	59.40	-	-	-	-9.80	-14%	10.33	12.60	-	-	-	2.27	22%	3,249.35	3,041.70	-	-	-	-207.65	-6%	
BPA	1,952.33	1,966.77	-	-	-	14.44	1%	254.97	222.20	-	-	-	-32.77	-13%	12.20	11.33	-	-	-	-0.87	-7%	2,219.50	2,200.30	-	-	-	-19.20	-1%	
Educ	739.08	632.88	-	-	-	-106.20	-14%	20.67	14.00	-	-	-	-6.67	-32%	2.33	2.27	-	-	-	-0.06	-3%	762.08	649.15	-	-	-	-112.93	-15%	
NSci	4,209.12	4,233.72	-	-	-	24.60	1%	125.40	99.62	-	-	-	-25.78	-21%	12.07	13.53	-	-	-	1.46	12%								

Comparing 3/08/2018 to 3/07/2019 46 Days to Spring 2019 Census on: 4/22/2019

	Resident							Non-Resident Foreign					Non-Resident USA					Total											
	2018	2019	Trgt	Trgt Δ	Trgt % Δ	N Δ	% Δ	2018	2019	Trgt	Trgt Δ	Trgt % Δ	N Δ	% Δ	2018	2019	Trgt	Trgt Δ	Trgt % Δ	N Δ	% Δ	2018	2019	Trgt	Trgt Δ	Trgt % Δ	N Δ	% Δ	
<b>New Students</b>																													
FT Freshmen	0	0	4	-4	-100%	0	-	3	0	20	-20	-100%	-3	-100%	0	0	1	-1	-100%	0	-	3	0	24	-24	-100%	-3	-100%	
LD Transfer	0	0	2	-2	-100%	0	-	4	3	3	0	0%	-1	-25%	0	0	0	0	-	0	-	4	3	5	-2	-40%	-1	-25%	
UD Transfer	2	10	7	3	43%	8	400%	7	2	18	-16	-89%	-5	-71%	0	1	0	1	-	1	-	9	13	25	-12	-48%	4	44%	
PostBac	1	1	0	1	-	0	0%	0	0	2	-2	-100%	0	-	0	0	0	0	-100%	0	-	1	1	2	-1	-50%	0	0%	
PostBac Cr	3	4	19	-15	-79%	1	33%	0	0	0	0	-	0	-	0	0	0	0	-	0	-	3	4	19	-15	-79%	1	33%	
Masters	43	39	56	-17	-30%	-4	-9%	2	2	23	-21	-91%	0	0%	0	1	1	0	14%	1	-	45	42	80	-38	-48%	-3	-7%	
Doctoral	0	0	0	0	-	0	-	0	0	0	0	-	0	-	0	0	0	0	-	0	-	0	0	0	0	-	0	-	
<b>Total</b>	<b>49</b>	<b>54</b>	<b>88</b>	<b>-34</b>	<b>-39%</b>	<b>5</b>	<b>10%</b>	<b>16</b>	<b>7</b>	<b>65</b>	<b>-58</b>	<b>-89%</b>	<b>-9</b>	<b>-56%</b>	<b>0</b>	<b>2</b>	<b>2</b>	<b>0</b>	<b>14%</b>	<b>2</b>	<b>-</b>	<b>65</b>	<b>63</b>	<b>155</b>	<b>-92</b>	<b>-59%</b>	<b>-2</b>	<b>-3%</b>	
<b>Continue/Return</b>																													
Freshmen	2,637	2,648	2,552	96	4%	11	0%	46	25	70	-45	-64%	-21	-46%	4	2	2	0	-12%	-2	-50%	2,687	2,675	2,624	51	2%	-12	0%	
Sophomores	2,531	2,349	2,453	-104	-4%	-182	-7%	95	72	84	-12	-14%	-23	-24%	5	4	6	-2	-30%	-1	-20%	2,631	2,425	2,542	-117	-5%	-206	-8%	
Juniors	4,242	4,229	3,773	456	12%	-13	0%	138	140	115	25	21%	2	1%	10	17	8	9	114%	7	70%	4,390	4,386	3,897	489	13%	-4	0%	
Seniors	5,184	4,971	5,760	-789	-14%	-213	-4%	202	203	222	-19	-9%	1	0%	14	15	12	3	20%	1	7%	5,400	5,189	5,994	-805	-13%	-211	-4%	
PostBac	16	13	26	-13	-51%	-3	-19%	1	3	2	1	63%	2	200%	1	0	1	-1	-100%	-1	-100%	18	16	29	-13	-46%	-2	-11%	
PostBac Cr	303	240	328	-88	-27%	-63	-21%	0	0	0	0	-	0	-	0	0	0	0	-	0	-	303	240	328	-88	-27%	-63	-21%	
Masters	1,105	1,145	1,305	-160	-12%	40	4%	94	71	138	-67	-49%	-23	-24%	12	15	9	6	65%	3	25%	1,211	1,231	1,453	-222	-15%	20	2%	
Doctoral	50	62	60	2	3%	12	24%	0	0	0	0	-100%	0	-	0	0	0	0	-	0	-	50	62	61	1	2%	12	24%	
Return fr Absence	4	1	8	-7	-88%	-3	-75%	0	0	3	-3	-100%	0	-	0	0	0	0	-	0	-	4	1	11	-10	-91%	-3	-75%	
Transitory	16	9	70	-61	-87%	-7	-44%	18	7	20	-13	-65%	-11	-61%	12	5	12	-7	-58%	-7	-58%	46	21	102	-81	-79%	-25	-54%	
<b>Total</b>	<b>16,088</b>	<b>15,667</b>	<b>16,335</b>	<b>-668</b>	<b>-4%</b>	<b>-421</b>	<b>-3%</b>	<b>594</b>	<b>521</b>	<b>655</b>	<b>-134</b>	<b>-20%</b>	<b>-73</b>	<b>-12%</b>	<b>58</b>	<b>58</b>	<b>51</b>	<b>7</b>	<b>15%</b>	<b>0</b>	<b>0%</b>	<b>16,740</b>	<b>16,246</b>	<b>17,041</b>	<b>-795</b>	<b>-5%</b>	<b>-494</b>	<b>-3%</b>	
<b>Total Headcount</b>	<b>16,137</b>	<b>15,721</b>	<b>16,423</b>	<b>-702</b>	<b>-4%</b>	<b>-416</b>	<b>-3%</b>	<b>610</b>	<b>528</b>	<b>720</b>	<b>-192</b>	<b>-27%</b>	<b>-82</b>	<b>-13%</b>	<b>58</b>	<b>60</b>	<b>52</b>	<b>8</b>	<b>15%</b>	<b>2</b>	<b>3%</b>	<b>16,805</b>	<b>16,309</b>	<b>17,196</b>	<b>-887</b>	<b>-5%</b>	<b>-496</b>	<b>-3%</b>	
<b>FTES All Students</b>																													
FT Freshmen	0.00	0.00	3.54	-3.54	-100%	0.00	-	2.27	0.00	18.46	-18.46	-100%	-2.27	-100%	0.00	0.00	0.43	-0.43	-100%	0	-	2.27	0.00	22.43	-22.43	-100%	-2.27	-100%	
Freshmen	2,452.80	2,491.13	2,258.14	232.99	10%	38.33	2%	41.67	22.00	65.93	-43.93	-67%	-19.67	-47%	4.00	2.20	1.94	0.26	14%	-2	-45%	2,498.47	2,515.33	2,326.01	189.32	8%	16.86	1%	
Sophomores	2,327.14	2,134.73	2,168.80	-34.07	-2%	-192.41	-8%	82.60	59.80	82.73	-22.93	-28%	-22.80	-28%	4.87	4.07	4.84	-0.77	-16%	-1	-16%	2,414.61	2,198.60	2,256.37	-57.77	-3%	-216.01	-9%	
Juniors	3,905.27	3,903.00	3,341.82	561.18	17%	-2.27	0%	130.60	127.20	113.46	13.74	12%	-3.40	-3%	9.13	17.47	6.78	10.69	158%	8	91%	4,045.00	4,047.67	3,462.06	585.61	17%	2.67	0%	
Seniors	4,541.80	4,325.73	5,093.87	-768.14	-15%	-216.07	-5%	190.33	176.20	224.25	-48.05	-21%	-14.13	-7%	12.60	11.73	10.65	1.08	10%	-1	-7%	4,744.73	4,513.66	5,328.77	-815.11	-15%	-231.07	-5%	
PostBac	10.73	8.26	23.38	-15.12	-65%	-2.47	-23%	0.93	2.13	3.41	-1.28	-38%	1.20	129%	0.40	0.00	1.29	-1.29	-100%	0	-100%	12.06	10.39	28.08	-17.69	-63%	-1.67	-14%	
PostBac Cr	261.40	177.67	307.14	-129.47	-42%	-83.73	-32%	0.00	0.00	0.00	0.00	-	0.00	-	0.00	0.00	0.00	0.00	-	0	-	261.40	177.67	307.14	-129.47	-42%	-83.73	-32%	
Masters	862.67	903.67	1,203.63	-299.96	-25%	41.00	5%	79.83	53.58	153.53	-99.95	-65%	-26.25	-33%	9.00	12.50	8.50	4.00	47%	4	39%	951.50	969.75	1,365.66	-395.91	-29%	18.25	2%	
Doctoral	33.75	37.42	53.14	-15.72	-30%	3.67	11%	0.00	0.00	0.40	-0.40	-100%	0.00	-	0.00	0.00	0.00	0.00	-	0	-	33.75	37.42	53.54	-16.12	-30%	3.67	11%	
Return fr Absence	2.47	0.87	7.07	-6.20	-88%	-1.60	-65%	0.00	0.00	2.83	-2.83	-100%	0.00	-	0.00	0.00	0.00	0.00	-	0	-	2.47	0.87	9.91	-9.04	-91%	-1.60	-65%	
Transitory	6.33	3.53	61.90	-58.37	-94%	-2.80	-44%	14.00	4.73	19.98	-15.25	-76%	-9.27	-66%	9.87	3.07	10.24	-7.17	-70%	-7	-69%	30.20	11.33	92.12	-80.79	-88%	-18.87	-62%	
<b>Total FTES</b>	<b>14,404.36</b>	<b>13,986.01</b>	<b>14,522.42</b>	<b>-536.41</b>	<b>-4%</b>	<b>-418.35</b>	<b>-3%</b>	<b>542.23</b>	<b>445.64</b>	<b>684.99</b>	<b>-239.35</b>	<b>-35%</b>	<b>-96.59</b>	<b>-18%</b>	<b>49.87</b>	<b>51.04</b>	<b>44.67</b>	<b>6.37</b>	<b>14%</b>	<b>1</b>	<b>2%</b>	<b>14,996.46</b>	<b>14,482.69</b>	<b>15,252.08</b>	<b>-769.39</b>	<b>-5%</b>	<b>-513.77</b>	<b>-3%</b>	
<b>Mean Unit Load</b>																													
FT Freshmen	-	-	13.26	-	-	-	-	11.35	-	14.20	-	-	-	-	-	-	12.80	-	-	-	-	11.35	-	14.02	-	-	-	-	
Freshmen	13.94	14.11	13.26	0.84	6%	0.16	1.2%	12.80	12.15	14.38	-2.23	-16%	-0.65	-5.1%	13.00	11.29	12.80	-1.51	-12%	-1.71	-13.2%	13.91	14.07	13.30	0.78	6%	0.16	1.2%	
Sophomores	13.78	13.63	13.26	0.37	3%	-0.15	-1.1%	12.64	12.12	14.25	-2.13	-15%	-0.52	-4.1%	14.61	15.26	12.80	2.46	19%	0.65	4.5%	13.74	13.59	13.30	0.29	2%	-0.15	-1.1%	
Juniors	13.80	13.81	13.26	0.55	4%	0.01	0.1%	13.99	13.44	14.26	-0.82	-6%	-0.56	-4.0%	13.70	14.56	12.80	1.76	14%	0.86	6.3%	13.81	13.80	13.29	0.51	4%	0.00	0.0%	
Seniors	13.14	13.05	13.26	-0.21	-2%	-0.08	-0.6%	13.80	13.02	14.24	-1.22	-9%	-0.78	-5.7%	13.50	11.73	12.80	-1.07	-8%	-1.77	-13.1%	13.16	13.05	13.30	-0.26	-2%	-0.12	-0.9%	
PostBac	8.87	8.05	13.26	-5.22	-39%	-0.82	-9.3%	13.95	10.65	14.76	-4.11	-28%	-3.30	-23.7%	6.00	-	12.80	-	-	-	-	8.96	8.39	13.35	-4.96	-37%	-0.56	-6.3%	
PostBac Cr	12.81	10.92	13.26	-2.34	-18%	-1.89	-14.8%	-	-	-	-	-	-	-	-	-	-	-	-	-	-	12.81	10.92	13.26	-2.34	-18%	-1.89	-14.8%	
Masters	9.02	9.16	10.61	-1.45	-14%	0.14	1.6%	9.98	8.81	11.40	-2.59	-23%	-1.17	-11.7%	9.00	9.38	10.24	-0.87	-8%	0.38	4.2%	9.09	9.14	10.69	-1.55	-15%	0.05	0.6%	
Doctoral	8.10	7.24	10.61	-3.37	-32%	-0.86	-10.6%	-	-	11.33	-	-	-	-	-	-	-	-	-	-	-	8.10	7.24	10.62	-3.37	-32%	-0.86	-10.6%	
<b>Total</b>	<b>13.22</b>	<b>13.17</b>	<b>13.03</b>	<b>0.13</b>	<b>1%</b>	<b>-0.06</b>	<b>-0.4%</b>	<b>12.94</b>	<b>12.36</b>	<b>13.62</b>	<b>-1.26</b>	<b>-9%</b>	<b>-0.59</b>	<b>-4.5%</b>	<b>12.43</b>	<b>12.14</b>	<b>12.32</b>	<b>-0.18</b>	<b>-1%</b>	<b>-0.30</b>	<b>-2.4%</b>	<b>13.21</b>	<b>13.14</b>	<b>13.06</b>	<b>0.08</b>	<b>1%</b>	<b>-0.07</b>	<b>-0.6%</b>	
<b>FTES College of Disc</b>																													
A&L	3,153.87	2,952.68				-201.19	-6%	69.20	58.20				-11.00	-16%	9.80	11.80				2.00	20%	3,232.87	3,022.68				-210.19	-7%	
BPA	1,949.13	1,959.83				10.70	1%	251.63	221.13				-30.50	-12%	12.20	11.33				-0.87	-7%	2,212.96	2,192.29				-20.67	-1%	
Educ	728.60	627.05				-101.55	-14%	19.33	14.00				-5.33	-28%	2.33	2.27				-0.06	-3%	750.26	643.32				-106.94	-14%	
NSci	4,193.92	4,221.17				27.25	1%	123.00	98.55				-24.45	-20%	12.07	13.53				1.46	12%	4,328.99	4,333.25				4.26	0%	



Comparing 3/06/2018 to 3/05/2019 48 Days to Spring 2019 Census on: 4/22/2019

	Resident							Non-Resident Foreign					Non-Resident USA					Total											
	2018	2019	Trgt	Trgt Δ	Trgt % Δ	N Δ	% Δ	2018	2019	Trgt	Trgt Δ	Trgt % Δ	N Δ	% Δ	2018	2019	Trgt	Trgt Δ	Trgt % Δ	N Δ	% Δ	2018	2019	Trgt	Trgt Δ	Trgt % Δ	N Δ	% Δ	
<b>New Students</b>																													
FT Freshmen	0	0	4	-4	-100%	0	-	2	0	20	-20	-100%	-2	-100%	0	0	1	-1	-100%	0	-	2	0	24	-24	-100%	-2	-100%	
LD Transfer	0	0	2	-2	-100%	0	-	4	1	3	-2	-67%	-3	-75%	0	0	0	0	-	0	-	4	1	5	-4	-80%	-3	-75%	
UD Transfer	2	10	7	3	43%	8	400%	5	1	18	-17	-94%	-4	-80%	0	1	0	1	-	1	-	7	12	25	-13	-52%	5	71%	
PostBac	1	1	0	1	-	0	0%	0	0	2	-2	-100%	0	-	0	0	0	0	-100%	0	-	1	1	2	-1	-50%	0	0%	
PostBac Cr	3	4	19	-15	-79%	1	33%	0	0	0	0	-	0	-	0	0	0	0	-	0	-	3	4	19	-15	-79%	1	33%	
Masters	34	34	56	-22	-39%	0	0%	2	3	23	-20	-87%	1	50%	0	1	1	0	14%	1	-	36	38	80	-42	-53%	2	6%	
Doctoral	0	0	0	0	-	0	-	0	0	0	0	-	0	-	0	0	0	0	-	0	-	0	0	0	0	-	0	-	
<b>Total</b>	<b>40</b>	<b>49</b>	<b>88</b>	<b>-39</b>	<b>-44%</b>	<b>9</b>	<b>23%</b>	<b>13</b>	<b>5</b>	<b>65</b>	<b>-60</b>	<b>-92%</b>	<b>-8</b>	<b>-62%</b>	<b>0</b>	<b>2</b>	<b>2</b>	<b>0</b>	<b>14%</b>	<b>2</b>	<b>-</b>	<b>53</b>	<b>56</b>	<b>155</b>	<b>-99</b>	<b>-64%</b>	<b>3</b>	<b>6%</b>	
<b>Continue/Return</b>																													
Freshmen	2,598	2,605	2,552	53	2%	7	0%	44	25	70	-45	-64%	-19	-43%	4	2	2	0	-12%	-2	-50%	2,646	2,632	2,624	8	0%	-14	-1%	
Sophomores	2,501	2,318	2,453	-135	-5%	-183	-7%	91	68	84	-16	-19%	-23	-25%	5	4	6	-2	-30%	-1	-20%	2,597	2,390	2,542	-152	-6%	-207	-8%	
Juniors	4,216	4,201	3,773	428	11%	-15	0%	137	140	115	25	21%	3	2%	10	16	8	8	101%	6	60%	4,363	4,357	3,897	460	12%	-6	0%	
Seniors	5,157	4,928	5,760	-832	-14%	-229	-4%	201	201	222	-21	-10%	0	0%	14	15	12	3	20%	1	7%	5,372	5,144	5,994	-850	-14%	-228	-4%	
PostBac	15	11	26	-15	-58%	-4	-27%	0	2	0	0	9%	1	100%	1	0	1	-1	-100%	-1	-100%	17	13	29	-16	-56%	-4	-24%	
PostBac Cr	295	237	328	-91	-28%	-58	-20%	0	0	0	0	-	0	-	0	0	0	0	-	0	-	295	237	328	-91	-28%	-58	-20%	
Masters	1,078	1,106	1,305	-199	-15%	28	3%	91	67	138	-71	-52%	-24	-26%	12	15	9	6	65%	3	25%	1,181	1,188	1,453	-265	-18%	7	1%	
Doctoral	36	62	60	2	3%	26	72%	0	0	0	0	-100%	0	-	0	0	0	0	-	0	-	36	62	61	1	2%	26	72%	
Return fr Absence	4	1	8	-7	-88%	-3	-75%	0	0	3	-3	-100%	0	-	0	0	0	0	-	0	-	4	1	11	-10	-91%	-3	-75%	
Transitory	8	8	70	-62	-89%	0	0%	17	6	20	-14	-70%	-11	-65%	11	3	12	-9	-75%	-8	-73%	36	17	102	-85	-83%	-19	-53%	
<b>Total</b>	<b>15,908</b>	<b>15,477</b>	<b>16,335</b>	<b>-858</b>	<b>-5%</b>	<b>-431</b>	<b>-3%</b>	<b>582</b>	<b>509</b>	<b>655</b>	<b>-146</b>	<b>-22%</b>	<b>-73</b>	<b>-13%</b>	<b>57</b>	<b>55</b>	<b>51</b>	<b>4</b>	<b>9%</b>	<b>-2</b>	<b>-4%</b>	<b>16,547</b>	<b>16,041</b>	<b>17,041</b>	<b>-1,000</b>	<b>-6%</b>	<b>-506</b>	<b>-3%</b>	
<b>Total Headcount</b>	<b>15,948</b>	<b>15,526</b>	<b>16,423</b>	<b>-897</b>	<b>-5%</b>	<b>-422</b>	<b>-3%</b>	<b>595</b>	<b>514</b>	<b>720</b>	<b>-206</b>	<b>-29%</b>	<b>-81</b>	<b>-14%</b>	<b>57</b>	<b>57</b>	<b>52</b>	<b>5</b>	<b>9%</b>	<b>0</b>	<b>0%</b>	<b>16,600</b>	<b>16,097</b>	<b>17,196</b>	<b>-1,099</b>	<b>-6%</b>	<b>-503</b>	<b>-3%</b>	
<b>FTES All Students</b>																													
FT Freshmen	0.00	0.00	3.54	-3.54	-100%	0.00	-	1.47	0.00	18.46	-18.46	-100%	-1.47	-100%	0.00	0.00	0.43	-0.43	-100%	0	-	1.47	0.00	22.43	-22.43	-100%	-1.47	-100%	
Freshmen	2,413.80	2,448.93	2,258.14	190.79	8%	35.13	1%	38.40	21.07	65.93	-44.86	-68%	-17.33	-45%	4.00	2.20	1.94	0.26	14%	-2	-45%	2,456.20	2,472.20	2,326.01	146.19	6%	16.00	1%	
Sophomores	2,290.40	2,101.67	2,168.80	-67.13	-3%	-188.73	-8%	79.60	57.80	82.73	-24.93	-30%	-21.80	-27%	4.87	4.07	4.84	-0.77	-16%	-1	-16%	2,374.87	2,163.54	2,256.37	-92.83	-4%	-211.33	-9%	
Juniors	3,870.07	3,865.80	3,341.82	523.98	16%	-4.27	0%	127.87	124.87	113.46	11.41	10%	-3.00	-2%	9.13	16.13	6.78	9.35	138%	7	77%	4,007.07	4,006.80	3,462.06	544.74	16%	-0.27	0%	
Seniors	4,495.07	4,267.53	5,093.87	-826.34	-16%	-227.54	-5%	188.33	174.33	224.25	-49.92	-22%	-14.00	-7%	12.60	11.73	10.65	1.08	10%	-1	-7%	4,696.00	4,453.59	5,328.77	-875.18	-16%	-242.41	-5%	
PostBac	9.93	7.26	23.38	-16.12	-69%	-2.67	-27%	0.93	1.33	3.41	-2.08	-61%	0.40	43%	0.13	0.00	1.29	-1.29	-100%	0	-100%	10.99	8.59	28.08	-19.49	-69%	-2.40	-22%	
PostBac Cr	255.20	175.27	307.14	-131.87	-43%	-79.93	-31%	0.00	0.00	0.00	0.00	-	0.00	-	0.00	0.00	0.00	0.00	-	0	-	255.20	175.27	307.14	-131.87	-43%	-79.93	-31%	
Masters	837.50	871.58	1,203.63	-332.05	-28%	34.08	4%	77.17	51.58	153.53	-101.95	-66%	-25.59	-33%	8.67	12.17	8.50	3.67	43%	4	40%	923.34	935.33	1,365.66	-430.33	-32%	11.99	1%	
Doctoral	27.25	37.42	53.14	-15.72	-30%	10.17	37%	0.00	0.00	0.40	-0.40	-100%	0.00	-	0.00	0.00	0.00	0.00	-	0	-	27.25	37.42	53.54	-16.12	-30%	10.17	37%	
Return fr Absence	2.47	0.87	7.07	-6.20	-88%	-1.60	-65%	0.00	0.00	2.83	-2.83	-100%	0.00	-	0.00	0.00	0.00	0.00	-	0	-	2.47	0.87	9.91	-9.04	-91%	-1.60	-65%	
Transitory	3.47	2.73	61.90	-59.17	-96%	-0.74	-21%	13.20	3.93	19.98	-16.05	-80%	-9.27	-70%	9.60	1.87	10.24	-8.37	-82%	-8	-81%	26.27	8.53	92.12	-83.59	-91%	-17.74	-68%	
<b>Total FTES</b>	<b>14,205.16</b>	<b>13,779.06</b>	<b>14,522.42</b>	<b>-743.36</b>	<b>-5%</b>	<b>-426.10</b>	<b>-3%</b>	<b>526.97</b>	<b>434.91</b>	<b>684.99</b>	<b>-250.08</b>	<b>-37%</b>	<b>-92.06</b>	<b>-17%</b>	<b>49.00</b>	<b>48.17</b>	<b>44.67</b>	<b>3.50</b>	<b>8%</b>	<b>-1</b>	<b>-2%</b>	<b>14,781.13</b>	<b>14,262.14</b>	<b>15,252.08</b>	<b>-989.94</b>	<b>-6%</b>	<b>-518.99</b>	<b>-4%</b>	
<b>Mean Unit Load</b>																													
FT Freshmen	-	-	13.26	-	-	-	-	11.03	-	14.20	-	-	-	-	-	-	12.80	-	-	0	-	11.03	-	14.02	-	-	-	-	
Freshmen	13.92	14.10	13.26	0.83	6%	0.17	1.2%	12.43	12.10	14.38	-2.29	-16%	-0.33	-2.6%	13.60	12.21	12.80	-0.59	-5%	-1.39	-10.2%	13.89	14.07	13.30	0.77	6%	0.18	1.3%	
Sophomores	13.73	13.60	13.26	0.34	3%	-0.13	-1.0%	12.70	12.57	14.25	-1.69	-12%	-0.14	-1.1%	14.61	15.26	12.80	2.46	19%	0.65	4.5%	13.70	13.57	13.30	0.28	2%	-0.12	-0.9%	
Juniors	13.77	13.77	13.26	0.51	4%	0.00	0.0%	14.00	13.28	14.26	-0.97	-7%	-0.72	-5.1%	13.70	14.23	12.80	1.43	11%	0.54	3.9%	13.77	13.76	13.29	0.46	3%	-0.02	-0.1%	
Seniors	13.07	12.99	13.26	-0.28	-2%	-0.08	-0.6%	13.72	13.01	14.24	-1.23	-9%	-0.71	-5.2%	13.50	11.73	12.80	-1.07	-8%	-1.77	-13.1%	13.10	12.99	13.30	-0.32	-2%	-0.11	-0.8%	
PostBac	9.10	7.88	13.26	-5.38	-41%	-1.22	-13.4%	13.95	9.98	14.76	-4.79	-32%	-3.98	-28.5%	1.95	-	12.80	-	-	-	-	9.00	8.11	13.35	-5.25	-39%	-0.89	-9.9%	
PostBac Cr	12.85	10.91	13.26	-2.36	-18%	-1.94	-15.1%	-	-	-	-	-	-	-	-	-	-	-	-	-	-	12.85	10.91	13.26	-2.36	-18%	-1.94	-15.1%	
Masters	9.04	9.17	10.61	-1.44	-14%	0.14	1.5%	9.96	8.84	11.40	-2.56	-22%	-1.12	-11.2%	8.67	9.13	10.24	-1.11	-11%	0.46	5.3%	9.10	9.15	10.69	-1.54	-14%	0.05	0.5%	
Doctoral	9.08	7.24	10.61	-3.37	-32%	-1.84	-20.3%	-	-	11.33	-	-	-	-	-	-	-	-	-	-	-	9.08	7.24	10.62	-3.37	-32%	-1.84	-20.3%	
<b>Total</b>	<b>13.20</b>	<b>13.14</b>	<b>13.03</b>	<b>0.10</b>	<b>1%</b>	<b>-0.06</b>	<b>-0.5%</b>	<b>12.90</b>	<b>12.39</b>	<b>13.62</b>	<b>-1.23</b>	<b>-9%</b>	<b>-0.50</b>	<b>-3.9%</b>	<b>12.44</b>	<b>12.04</b>	<b>12.32</b>	<b>-0.28</b>	<b>-2%</b>	<b>-0.40</b>	<b>-3.2%</b>	<b>13.18</b>	<b>13.11</b>	<b>13.06</b>	<b>0.05</b>	<b>0%</b>	<b>-0.08</b>	<b>-0.6%</b>	
<b>FTES College of Disc</b>																													
A&L	3,104.37	2,908.73	-	-	-	-195.64	-6%	66.07	57.60	-	-	-	-8.47	-13%	9.53	10.67	-	-	1.14	12%	3,179.97	2,977.00	-	-	-	-202.97	-6%		
BPA	1,928.00	1,925.77	-	-	-	-2.23	0%	244.30	218.27	-	-	-	-26.03	-11%	11.87	11.07	-	-	-0.80	-7%	2,184.17	2,155.11	-	-	-	-29.06	-1%		
Educ	695.37	607.72	-	-	-	-87.65	-13%	19.33	12.00	-	-	-	-7.33	-38%	2.33	2.27	-	-	-0.06	-3%	717.03	621.99	-	-	-	-95.04	-13%		
NSci	4,158.32	4,169.90	-	-	-	11.58	0%	120.60	95.68	-	-	-	-24.92	-21%	11.80	12.33	-	-	0.53	4%	4,290.72	4,277.91	-	-	-				



Comparing 3/05/2018 to 3/04/2019 49 Days to Spring 2019 Census on: 4/22/2019

	Resident							Non-Resident Foreign					Non-Resident USA					Total											
	2018	2019	Trgt	Trgt Δ	Trgt % Δ	N Δ	% Δ	2018	2019	Trgt	Trgt Δ	Trgt % Δ	N Δ	% Δ	2018	2019	Trgt	Trgt Δ	Trgt % Δ	N Δ	% Δ	2018	2019	Trgt	Trgt Δ	Trgt % Δ	N Δ	% Δ	
<b>New Students</b>																													
FT Freshmen	0	0	4	-4	-100%	0	-	2	0	20	-20	-100%	-2	-100%	0	0	1	-1	-100%	0	-	2	0	24	-24	-100%	-2	-100%	
LD Transfer	0	0	2	-2	-100%	0	-	4	1	3	-2	-67%	-3	-75%	0	0	0	0	-	0	-	4	1	5	-4	-80%	-3	-75%	
UD Transfer	2	10	7	3	43%	8	400%	5	1	18	-17	-94%	-4	-80%	0	1	0	1	-	1	-	7	12	25	-13	-52%	5	71%	
PostBac	1	1	0	1	-	0	0%	0	0	2	-2	-100%	0	-	0	0	0	0	-100%	0	-	1	1	2	-1	-50%	0	0%	
PostBac Cr	3	4	19	-15	-79%	1	33%	0	0	0	0	-	0	-	0	0	0	0	-	0	-	3	4	19	-15	-79%	1	33%	
Masters	33	34	56	-22	-39%	1	3%	2	4	23	-19	-83%	2	100%	0	1	1	0	14%	1	-	35	39	80	-41	-51%	4	11%	
Doctoral	0	0	0	0	-	0	-	0	0	0	0	-	0	-	0	0	0	0	-	0	-	0	0	0	0	-	0	-	
<b>Total</b>	<b>39</b>	<b>49</b>	<b>88</b>	<b>-39</b>	<b>-44%</b>	<b>10</b>	<b>26%</b>	<b>13</b>	<b>6</b>	<b>65</b>	<b>-59</b>	<b>-91%</b>	<b>-7</b>	<b>-54%</b>	<b>0</b>	<b>2</b>	<b>2</b>	<b>0</b>	<b>14%</b>	<b>2</b>	<b>-</b>	<b>52</b>	<b>57</b>	<b>155</b>	<b>-98</b>	<b>-63%</b>	<b>5</b>	<b>10%</b>	
<b>Continue/Return</b>																													
Freshmen	2,573	2,579	2,552	27	1%	6	0%	41	25	70	-45	-64%	-16	-39%	4	2	2	0	-12%	-2	-50%	2,618	2,606	2,624	-18	-1%	-12	0%	
Sophomores	2,477	2,296	2,453	-157	-6%	-181	-7%	88	68	84	-16	-19%	-20	-23%	5	4	6	-2	-30%	-1	-20%	2,570	2,368	2,542	-174	-7%	-202	-8%	
Juniors	4,211	4,180	3,773	407	11%	-31	-1%	137	139	115	24	20%	2	1%	10	16	8	8	101%	6	60%	4,358	4,335	3,897	438	11%	-23	-1%	
Seniors	5,142	4,918	5,760	-842	-15%	-224	-4%	201	199	222	-23	-10%	-2	-1%	14	15	12	3	20%	1	7%	5,357	5,132	5,994	-862	-14%	-225	-4%	
PostBac	14	11	26	-15	-58%	-3	-21%	0	2	0	0	9%	1	100%	1	0	1	-1	-100%	-1	-100%	16	13	29	-16	-56%	-3	-19%	
PostBac Cr	289	233	328	-95	-29%	-56	-19%	0	0	0	0	-	0	-	0	0	0	0	-	0	-	289	233	328	-95	-29%	-56	-19%	
Masters	1,056	1,088	1,305	-217	-17%	32	3%	91	65	138	-73	-53%	-26	-29%	12	14	9	5	54%	2	17%	1,159	1,167	1,453	-286	-20%	8	1%	
Doctoral	35	58	60	-2	-3%	23	66%	0	0	0	0	-100%	0	-	0	0	0	0	-	0	-	35	58	61	-3	-4%	23	66%	
Return fr Absence	4	1	8	-7	-88%	-3	-75%	0	0	3	-3	-100%	0	-	0	0	0	0	-	0	-	4	1	11	-10	-91%	-3	-75%	
Transitory	7	6	70	-64	-91%	-1	-14%	16	4	20	-16	-80%	-12	-75%	11	2	12	-10	-83%	-9	-82%	34	12	102	-90	-88%	-22	-65%	
<b>Total</b>	<b>15,808</b>	<b>15,370</b>	<b>16,335</b>	<b>-965</b>	<b>-6%</b>	<b>-438</b>	<b>-3%</b>	<b>575</b>	<b>502</b>	<b>655</b>	<b>-153</b>	<b>-23%</b>	<b>-73</b>	<b>-13%</b>	<b>57</b>	<b>53</b>	<b>51</b>	<b>2</b>	<b>5%</b>	<b>-4</b>	<b>-7%</b>	<b>16,440</b>	<b>15,925</b>	<b>17,041</b>	<b>-1,116</b>	<b>-7%</b>	<b>-515</b>	<b>-3%</b>	
<b>Total Headcount</b>	<b>15,847</b>	<b>15,419</b>	<b>16,423</b>	<b>-1,004</b>	<b>-6%</b>	<b>-428</b>	<b>-3%</b>	<b>588</b>	<b>508</b>	<b>720</b>	<b>-212</b>	<b>-29%</b>	<b>-80</b>	<b>-14%</b>	<b>57</b>	<b>55</b>	<b>52</b>	<b>3</b>	<b>5%</b>	<b>-2</b>	<b>-4%</b>	<b>16,492</b>	<b>15,982</b>	<b>17,196</b>	<b>-1,214</b>	<b>-7%</b>	<b>-510</b>	<b>-3%</b>	
<b>FTES All Students</b>																													
FT Freshmen	0.00	0.00	3.54	-3.54	-100%	0.00	-	1.47	0.00	18.46	-18.46	-100%	-1.47	-100%	0.00	0.00	0.43	-0.43	-100%	0	-	1.47	0.00	22.43	-22.43	-100%	-1.47	-100%	
Freshmen	2,385.73	2,419.87	2,258.14	161.73	7%	34.14	1%	36.53	20.53	65.93	-45.40	-69%	-16.00	-44%	4.00	2.20	1.94	0.26	14%	-2	-45%	2,426.26	2,442.60	2,326.01	116.59	5%	16.34	1%	
Sophomores	2,265.86	2,081.20	2,168.80	-87.60	-4%	-184.66	-8%	76.27	57.13	82.73	-25.60	-31%	-19.14	-25%	4.87	4.07	4.84	-0.77	-16%	-1	-16%	2,347.00	2,142.40	2,256.37	-113.97	-5%	-204.60	-9%	
Juniors	3,860.07	3,843.73	3,341.82	501.91	15%	-16.34	0%	128.13	124.27	113.46	10.81	10%	-3.86	-3%	9.13	15.87	6.78	9.09	134%	7	74%	3,997.33	3,983.87	3,462.06	521.81	15%	-13.46	0%	
Seniors	4,480.94	4,254.40	5,093.87	-839.47	-16%	-226.54	-5%	187.40	172.20	224.25	-52.05	-23%	-15.20	-8%	12.60	11.13	10.65	0.48	4%	-1	-12%	4,680.94	4,437.73	5,328.77	-891.04	-17%	-243.21	-5%	
PostBac	9.67	7.33	23.38	-16.05	-69%	-2.34	-24%	0.93	1.33	3.41	-2.08	-61%	0.40	43%	0.13	0.00	1.29	-1.29	-100%	0	-100%	10.73	8.66	28.08	-19.42	-69%	-2.07	-19%	
PostBac Cr	250.33	170.47	307.14	-136.67	-44%	-79.86	-32%	0.00	0.00	0.00	0.00	-	0.00	-	0.00	0.00	0.00	0.00	-	0	-	250.33	170.47	307.14	-136.67	-44%	-79.86	-32%	
Masters	819.84	856.25	1,203.63	-347.38	-29%	36.41	4%	77.17	50.58	153.53	-102.95	-67%	-26.59	-34%	8.67	11.00	8.50	2.50	29%	2	27%	905.68	917.83	1,365.66	-447.83	-33%	12.15	1%	
Doctoral	26.50	34.50	53.14	-18.64	-35%	8.00	30%	0.00	0.00	0.40	-0.40	-100%	0.00	-	0.00	0.00	0.00	0.00	-	0	-	26.50	34.50	53.54	-19.04	-36%	8.00	30%	
Return fr Absence	2.47	0.87	7.07	-6.20	-88%	-1.60	-65%	0.00	0.00	2.83	-2.83	-100%	0.00	-	0.00	0.00	0.00	0.00	-	0	-	2.47	0.87	9.91	-9.04	-91%	-1.60	-65%	
Transitory	2.93	2.13	61.90	-59.77	-97%	-0.80	-27%	12.67	3.40	19.98	-16.58	-83%	-9.27	-73%	9.87	1.33	10.24	-8.91	-87%	-9	-87%	25.47	6.86	92.12	-85.26	-93%	-18.61	-73%	
<b>Total FTES</b>	<b>14,104.34</b>	<b>13,670.75</b>	<b>14,522.42</b>	<b>-851.67</b>	<b>-6%</b>	<b>-433.59</b>	<b>-3%</b>	<b>520.57</b>	<b>429.44</b>	<b>684.99</b>	<b>-255.55</b>	<b>-37%</b>	<b>-91.13</b>	<b>-18%</b>	<b>49.27</b>	<b>45.60</b>	<b>44.67</b>	<b>0.93</b>	<b>2%</b>	<b>-4</b>	<b>-7%</b>	<b>14,674.18</b>	<b>14,145.79</b>	<b>15,252.08</b>	<b>-1,106.29</b>	<b>-7%</b>	<b>-528.39</b>	<b>-4%</b>	
<b>Mean Unit Load</b>																													
FT Freshmen	-	-	13.26	-	-	-	-	11.03	-	14.20	-	-	-	-	-	-	12.80	-	-	0	-	11.03	-	14.02	-	-	-	-	
Freshmen	13.90	14.07	13.26	0.80	6%	0.17	1.2%	12.67	12.38	14.38	-2.01	-14%	-0.29	-2.3%	13.87	13.24	12.80	0.43	3%	-0.63	-4.6%	13.87	14.05	13.30	0.75	6%	0.18	1.3%	
Sophomores	13.72	13.60	13.26	0.33	3%	-0.12	-0.9%	12.57	12.42	14.25	-1.84	-13%	-0.15	-1.2%	14.61	15.26	12.80	2.46	19%	0.65	4.5%	13.68	13.57	13.30	0.27	2%	-0.11	-0.8%	
Juniors	13.75	13.76	13.26	0.50	4%	0.01	0.1%	14.03	13.31	14.26	-0.94	-7%	-0.71	-5.1%	13.70	14.00	12.80	1.20	9%	0.31	2.2%	13.76	13.75	13.29	0.45	3%	-0.01	-0.1%	
Seniors	13.07	12.97	13.26	-0.29	-2%	-0.09	-0.7%	13.66	12.98	14.24	-1.26	-9%	-0.68	-5.0%	13.50	11.13	12.80	-1.67	-13%	-2.37	-17.6%	13.09	12.97	13.30	-0.33	-2%	-0.12	-0.9%	
PostBac	9.39	8.40	13.26	-4.86	-37%	-0.99	-10.6%	13.95	9.98	14.76	-4.79	-32%	-3.98	-28.5%	1.95	-	12.80	-	-	-	-	9.25	8.59	13.35	-4.77	-36%	-0.66	-7.2%	
PostBac Cr	12.86	10.79	13.26	-2.47	-19%	-2.07	-16.1%	-	-	-	-	-	-	-	-	-	-	-	-	-	-	12.86	10.79	13.26	-2.47	-19%	-2.07	-16.1%	
Masters	9.03	9.16	10.61	-1.45	-14%	0.12	1.4%	9.96	8.80	11.40	-2.60	-23%	-1.16	-11.7%	8.67	8.80	10.24	-1.44	-14%	0.13	1.5%	9.10	9.13	10.69	-1.56	-15%	0.03	0.3%	
Doctoral	9.09	7.14	10.61	-3.47	-33%	-1.95	-21.4%	-	-	11.33	-	-	-	-	-	-	-	-	-	-	-	9.09	7.14	10.62	-3.48	-33%	-1.95	-21.4%	
<b>Total</b>	<b>13.19</b>	<b>13.13</b>	<b>13.03</b>	<b>0.09</b>	<b>1%</b>	<b>-0.06</b>	<b>-0.5%</b>	<b>12.89</b>	<b>12.38</b>	<b>13.62</b>	<b>-1.24</b>	<b>-9%</b>	<b>-0.50</b>	<b>-3.9%</b>	<b>12.51</b>	<b>11.84</b>	<b>12.32</b>	<b>-0.48</b>	<b>-4%</b>	<b>-0.67</b>	<b>-5.4%</b>	<b>13.18</b>	<b>13.10</b>	<b>13.06</b>	<b>0.04</b>	<b>0%</b>	<b>-0.08</b>	<b>-0.6%</b>	
<b>FTES College of Disc</b>																													
A&L	3,076.60	2,883.47				-193.13	-6%	63.87	53.87				-10.00	-16%	9.53	10.67				1.14	12%	3,150.00	2,948.01				-201.99	-6%	
BPA	1,919.07	1,917.63				-1.44	0%	243.50	217.80				-25.70	-11%	11.87	11.07				-0.80	-7%	2,174.44	2,146.50				-27.94	-1%	
Educ	683.82	592.90				-90.92	-13%	19.33	11.33				-8.00	-41%	2.33	1.60				-0.73	-31%	705.48	605.83				-99.65	-14%	
NSci	4,130.85	4,146.77				15.92	0%	118.67	95.22				-23.45	-20%	11.80	11.73				-0.07	-1%	4,261.32	4,253.72				-7.60	0%</	

Comparing 3/02/2018 to 3/01/2019		52 Days to Spring 2019 Census on: 4/22/2019																											
		Resident						Non-Resident Foreign						Non-Resident USA						Total									
		2018	2019	Trgt	Trgt Δ	Trgt % Δ	N Δ	% Δ	2018	2019	Trgt	Trgt Δ	Trgt % Δ	N Δ	% Δ	2018	2019	Trgt	Trgt Δ	Trgt % Δ	N Δ	% Δ	2018	2019	Trgt	Trgt Δ	Trgt % Δ	N Δ	% Δ
<b>New Students</b>																													
FT Freshmen	0	0	4	-4	-100%	0	-	2	0	20	-20	-100%	-2	-100%	0	0	1	-1	-100%	0	-	2	0	24	-24	-100%	-2	-100%	
LD Transfer	0	0	2	-2	-100%	0	-	3	1	3	-2	-67%	-2	-67%	0	0	0	0	-	0	-	3	1	5	-4	-80%	-2	-67%	
UD Transfer	2	10	7	3	43%	8	400%	5	1	18	-17	-94%	-4	-80%	0	1	0	1	-	1	-	7	12	25	-13	-52%	5	71%	
PostBac	1	1	0	1	-	0	0%	0	0	2	-2	-100%	0	-	0	0	0	0	-100%	0	-	1	1	2	-1	-50%	0	0%	
PostBac Cr	3	3	19	-16	-84%	0	0%	0	0	0	0	-	0	-	0	0	0	0	-	0	-	3	3	19	-16	-84%	0	0%	
Masters	31	32	56	-24	-43%	1	3%	0	4	23	-19	-83%	4	-	0	1	1	0	14%	1	-	31	37	80	-43	-54%	6	19%	
Doctoral	0	0	0	0	-	0	-	0	0	0	0	-	0	-	0	0	0	0	-	0	-	0	0	0	0	-	0	-	
<b>Total</b>	<b>37</b>	<b>46</b>	<b>88</b>	<b>-42</b>	<b>-48%</b>	<b>9</b>	<b>24%</b>	<b>10</b>	<b>6</b>	<b>65</b>	<b>-59</b>	<b>-91%</b>	<b>-4</b>	<b>-40%</b>	<b>0</b>	<b>2</b>	<b>2</b>	<b>0</b>	<b>14%</b>	<b>2</b>	<b>-</b>	<b>47</b>	<b>54</b>	<b>155</b>	<b>-101</b>	<b>-65%</b>	<b>7</b>	<b>15%</b>	
<b>Continue/Return</b>																													
Freshmen	2,507	2,519	2,552	-33	-1%	12	0%	38	22	70	-48	-68%	-16	-42%	4	2	2	0	-12%	-2	-50%	2,549	2,543	2,624	-81	-3%	-6	0%	
Sophomores	2,446	2,260	2,453	-193	-8%	-186	-8%	83	67	84	-17	-20%	-16	-19%	5	4	6	-2	-30%	-1	-20%	2,534	2,331	2,542	-211	-8%	-203	-8%	
Juniors	4,184	4,157	3,773	384	10%	-27	-1%	137	139	115	24	20%	2	1%	10	16	8	8	101%	6	60%	4,331	4,312	3,897	415	11%	-19	0%	
Seniors	5,131	4,897	5,760	-863	-15%	-234	-5%	201	199	222	-23	-10%	-2	-1%	14	14	12	2	12%	0	0%	5,346	5,110	5,994	-884	-15%	-236	-4%	
PostBac	13	9	26	-17	-66%	-4	-31%	0	2	0	0	9%	1	100%	0	0	1	-1	-100%	0	-	14	11	29	-18	-63%	-3	-21%	
PostBac Cr	276	228	328	-100	-31%	-48	-17%	0	0	0	0	-	0	-	0	0	0	0	-	0	-	276	228	328	-100	-31%	-48	-17%	
Masters	1,022	1,061	1,305	-244	-19%	39	4%	90	64	138	-74	-54%	-26	-29%	12	13	9	4	43%	1	8%	1,124	1,138	1,453	-315	-22%	14	1%	
Doctoral	35	58	60	-2	-3%	23	66%	0	0	0	0	-100%	0	-	0	0	0	0	-	0	-	35	58	61	-3	-4%	23	66%	
Return fr Absence	4	1	8	-7	-88%	-3	-75%	0	0	3	-3	-100%	0	-	0	0	0	0	-	0	-	4	1	11	-3	-91%	-3	-75%	
Transitory	1	1	70	-69	-99%	0	0%	13	1	20	-19	-95%	-12	-92%	10	1	12	-11	-92%	-9	-90%	24	3	102	-99	-97%	-21	-88%	
<b>Total</b>	<b>15,619</b>	<b>15,191</b>	<b>16,335</b>	<b>-1,144</b>	<b>-7%</b>	<b>-428</b>	<b>-3%</b>	<b>563</b>	<b>494</b>	<b>655</b>	<b>-161</b>	<b>-25%</b>	<b>-69</b>	<b>-12%</b>	<b>55</b>	<b>50</b>	<b>51</b>	<b>-1</b>	<b>-1%</b>	<b>-5</b>	<b>-9%</b>	<b>16,237</b>	<b>15,735</b>	<b>17,041</b>	<b>-1,306</b>	<b>-8%</b>	<b>-502</b>	<b>-3%</b>	
<b>Total Headcount</b>	<b>15,656</b>	<b>15,237</b>	<b>16,423</b>	<b>-1,186</b>	<b>-7%</b>	<b>-419</b>	<b>-3%</b>	<b>573</b>	<b>500</b>	<b>720</b>	<b>-220</b>	<b>-31%</b>	<b>-73</b>	<b>-13%</b>	<b>55</b>	<b>52</b>	<b>52</b>	<b>0</b>	<b>-1%</b>	<b>-3</b>	<b>-5%</b>	<b>16,284</b>	<b>15,789</b>	<b>17,196</b>	<b>-1,407</b>	<b>-8%</b>	<b>-495</b>	<b>-3%</b>	
<b>FTES All Students</b>																													
FT Freshmen	0.00	0.00	3.54	-3.54	-100%	0.00	-	1.20	0.00	18.46	-18.46	-100%	-1.20	-100%	0.00	0.00	0.43	-0.43	-100%	0	-	1.20	0.00	22.43	-22.43	-100%	-1.20	-100%	
Freshmen	2,319.73	2,361.53	2,258.14	103.39	5%	41.80	2%	33.07	19.20	65.93	-46.73	-71%	-13.87	-42%	4.00	2.20	1.94	0.26	14%	-2	-45%	2,356.80	2,382.93	2,326.01	56.92	2%	26.13	1%	
Sophomores	2,236.27	2,047.00	2,168.80	-121.80	-6%	-189.27	-8%	72.93	56.40	82.73	-26.33	-32%	-16.53	-23%	4.87	4.07	4.84	-0.77	-16%	-1	-16%	2,314.07	2,107.47	2,256.37	-148.90	-7%	-206.60	-9%	
Juniors	3,835.00	3,823.33	3,341.82	481.51	14%	-11.67	0%	128.13	124.27	113.46	10.81	10%	-3.86	-3%	9.13	15.87	3,462.07	9.09	134%	7	74%	3,972.26	3,963.47	3,462.06	501.41	14%	-8.79	0%	
Seniors	4,465.34	4,232.87	5,093.87	-861.00	-17%	-232.47	-5%	186.93	171.00	224.25	-53.25	-24%	-15.93	-9%	12.60	10.87	10.65	0.22	2%	-2	-14%	4,664.87	4,414.74	5,328.77	-914.03	-17%	-250.13	-5%	
PostBac	9.67	6.53	23.38	-16.85	-72%	-3.14	-32%	0.93	1.33	3.41	-2.08	-61%	0.40	43%	0.00	0.00	1.29	-1.29	-100%	0	-	10.60	7.86	28.08	-20.22	-72%	-2.74	-26%	
PostBac Cr	239.60	166.33	307.14	-140.81	-46%	-73.27	-31%	0.00	0.00	0.00	0.00	-	0.00	-	0.00	0.00	0.00	0.00	-	0	-	239.60	166.33	307.14	-140.81	-46%	-73.27	-31%	
Masters	799.00	837.00	1,203.63	-366.63	-30%	38.00	5%	74.83	50.25	153.53	-103.28	-67%	-24.58	-33%	8.67	10.17	8.50	1.67	20%	2	17%	882.50	897.42	1,365.66	-468.24	-34%	14.92	2%	
Doctoral	26.50	34.08	53.14	-19.06	-36%	7.58	29%	0.00	0.00	0.40	-0.40	-100%	0.00	-	0.00	0.00	0.00	0.00	-	0	-	26.50	34.08	53.54	-19.46	-36%	7.58	29%	
Return fr Absence	2.47	0.87	7.07	-6.20	-88%	-1.60	-65%	0.00	0.00	2.83	-2.83	-100%	0.00	-	0.00	0.00	0.00	0.00	-	0	-	2.47	0.87	9.91	-9.04	-91%	-1.60	-65%	
Transitory	0.27	0.27	61.90	-61.63	-100%	0.00	0%	11.07	0.80	19.98	-19.18	-96%	-10.27	-93%	8.80	0.87	10.24	-9.37	-92%	-8	-90%	20.14	1.94	92.12	-90.18	-98%	-18.20	-90%	
<b>Total FTES</b>	<b>13,933.85</b>	<b>13,509.81</b>	<b>14,522.42</b>	<b>-1,012.61</b>	<b>-7%</b>	<b>-424.04</b>	<b>-3%</b>	<b>509.09</b>	<b>423.25</b>	<b>684.99</b>	<b>-261.74</b>	<b>-38%</b>	<b>-85.84</b>	<b>-17%</b>	<b>48.07</b>	<b>44.05</b>	<b>44.67</b>	<b>-0.62</b>	<b>-1%</b>	<b>-4</b>	<b>-8%</b>	<b>14,491.01</b>	<b>13,977.11</b>	<b>15,252.08</b>	<b>-1,274.97</b>	<b>-8%</b>	<b>-513.90</b>	<b>-4%</b>	
<b>Mean Unit Load</b>																													
FT Freshmen	-	-	13.26	-	-	-	-	9.00	-	14.20	-	-	-	-	-	-	12.80	-	-	-	-	9.00	-	14.02	-	-	-	-	
Freshmen	13.88	14.06	13.26	0.80	6%	0.19	1.3%	12.92	13.04	14.38	-1.34	-9%	0.12	0.9%	13.71	15.35	12.80	2.55	20%	1.64	11.9%	13.86	14.05	13.30	0.76	6%	0.20	1.4%	
Sophomores	13.71	13.59	13.26	0.32	2%	-0.13	-0.9%	12.72	12.44	14.25	-1.81	-13%	-0.28	-2.2%	14.61	15.26	12.80	2.46	19%	0.65	4.5%	13.68	13.56	13.30	0.26	2%	-0.13	-0.9%	
Juniors	13.75	13.76	13.26	0.50	4%	0.02	0.1%	14.03	13.31	14.26	-0.94	-7%	-0.71	-5.1%	13.70	14.00	12.80	1.20	9%	0.31	2.2%	13.75	13.75	13.29	0.46	3%	-0.01	0.0%	
Seniors	13.05	12.97	13.26	-0.30	-2%	-0.08	-0.6%	13.62	12.89	14.24	-1.35	-9%	-0.73	-5.4%	13.50	11.65	12.80	-1.16	-9%	-1.85	-13.7%	13.07	12.96	13.30	-0.34	-3%	-0.11	-0.9%	
PostBac	10.36	9.27	13.26	-3.99	-30%	-1.09	-10.5%	13.95	9.98	14.76	-4.79	-32%	-3.98	-28.5%	-	-	12.80	-	-	-	-	10.60	9.38	13.35	-3.97	-30%	-1.22	-11.5%	
PostBac Cr	12.88	10.80	13.26	-2.46	-19%	-2.08	-16.2%	-	-	-	-	-	-	-	-	-	-	-	-	-	-	12.88	10.80	13.26	-2.46	-19%	-2.08	-16.2%	
Masters	9.11	9.19	10.61	-1.42	-13%	0.08	0.9%	9.98	8.87	11.40	-2.53	-22%	-1.11	-11.1%	8.67	8.72	10.24	-1.52	-15%	0.05	0.5%	9.17	9.17	10.69	-1.53	-14%	0.00	0.0%	
Doctoral	9.09	7.05	10.61	-3.56	-34%	-2.03	-22.4%	-	-	11.33	-	-	-	-	-	-	-	-	-	-	-	9.09	7.05	10.62	-3.57	-34%	-2.03	-22.4%	
<b>Total</b>	<b>13.19</b>	<b>13.13</b>	<b>13.03</b>	<b>0.09</b>	<b>1%</b>	<b>-0.06</b>	<b>-0.5%</b>	<b>12.94</b>	<b>12.40</b>	<b>13.62</b>	<b>-1.22</b>	<b>-9%</b>	<b>-0.54</b>	<b>-4.2%</b>	<b>12.64</b>	<b>12.12</b>	<b>12.32</b>	<b>-0.20</b>	<b>-2%</b>	<b>-0.52</b>	<b>-4.1%</b>	<b>13.18</b>	<b>13.10</b>	<b>13.06</b>	<b>0.05</b>	<b>0%</b>	<b>-0.08</b>	<b>-0.6%</b>	
<b>FTES College of Disc</b>																													
A&L	3,027.10	2,838.13	-	-	-	-188.97	-6%	60.20	51.13	-	-	-	-9.07	-15%	9.27	10.67	-	-	-	1.40	15%	3,096.57	2,899.93	-	-	-	-196.64	-6%	
BPA	1,910.87	1,907.17	-	-	-	-3.70	0%	242.17	217.20	-	-	-	-24.97	-10%	11.87	11.07	-	-	-	-0.80	-7%	2,164.91	2,135.44	-	-	-	-29.47	-1%	
Educ	663.40	576.45	-	-	-	-86.95	-13%	19.00	11.07	-	-	-	-7.93	-42%	2.33	1.60	-	-	-	-0.73	-31%	684.73	589.12	-	-	-	-95.61	-14%	
NSci	4,091.00	4,114.27	-	-	-	23.27	1%	115.33	92.88	-	-	-	-22.45	-19%	11.67	11.27	-	-	-	-0.40	-3%	4,218.00	4,218.42	-	-	-	0.42	0%	
SBS	4,210.80	4,028.87	-	-	-	-181.93	-4%	72.40	50.97	-	-	-	-21.43	-30%	12.93	9.43	-	-	-	-3.50	-27%	4,296.13	4,089.27	-	-	-	-206.86	-5%	
UNV	30.67	44.93	-	-	-	14.26	46%	0.00	0.00	-	-	-	0.00	-	0.00	0.00	-	-	-	0.00	-	30.67	44.93	-	-	-	14.26	46%	
<b>Total</b>	<b>13,933.84</b>	<b>13,509.82</b>	-	-	-	<b>-424.02</b>	<b>-3%</b>	<b>509.10</b>	<b>423.25</b>	-																			

Comparing 3/01/2018 to 2/28/2019 53 Days to Spring 2019 Census on: 4/22/2019

	Resident							Non-Resident Foreign					Non-Resident USA					Total											
	2018	2019	Trgt	Trgt Δ	Trgt % Δ	N Δ	% Δ	2018	2019	Trgt	Trgt Δ	Trgt % Δ	N Δ	% Δ	2018	2019	Trgt	Trgt Δ	Trgt % Δ	N Δ	% Δ	2018	2019	Trgt	Trgt Δ	Trgt % Δ	N Δ	% Δ	
<b>New Students</b>																													
FT Freshmen	0	0	4	-4	-100%	0	-	0	0	20	-20	-100%	0	-	0	0	1	-1	-100%	0	-	0	0	24	-24	-100%	0	-	
LD Transfer	0	0	2	-2	-100%	0	-	3	1	3	-2	-67%	-2	-67%	0	0	0	0	-	0	-	3	1	5	-4	-80%	-2	-67%	
UD Transfer	2	10	7	3	43%	8	400%	4	1	18	-17	-94%	-3	-75%	0	1	0	1	-	1	-	6	12	25	-13	-52%	6	100%	
PostBac	1	1	0	1	-	0	0%	0	0	2	-2	-100%	0	-	0	0	0	0	-100%	0	-	1	1	2	-1	-50%	0	0%	
PostBac Cr	3	3	19	-16	-84%	0	0%	0	0	0	0	-	0	-	0	0	0	0	-	0	-	3	3	19	-16	-84%	0	0%	
Masters	29	30	56	-26	-46%	1	3%	0	4	23	-19	-83%	4	-	0	1	1	0	14%	1	-	29	35	80	-45	-56%	6	21%	
Doctoral	0	0	0	0	-	0	-	0	0	0	0	-	0	-	0	0	0	0	-	0	-	0	0	0	0	-	0	-	
<b>Total</b>	35	44	88	-44	-50%	9	26%	7	6	65	-59	-91%	-1	-14%	0	2	2	0	14%	2	-	42	52	155	-103	-66%	10	24%	
<b>Continue/Return</b>																													
Freshmen	2,411	2,413	2,552	-139	-5%	2	0%	32	21	70	-49	-70%	-11	-34%	4	2	2	0	-12%	-2	-50%	2,447	2,436	2,624	-188	-7%	-11	0%	
Sophomores	2,402	2,215	2,453	-238	-10%	-187	-8%	79	65	84	-19	-23%	-14	-18%	5	4	6	-2	-30%	-1	-20%	2,486	2,284	2,542	-258	-10%	-202	-8%	
Juniors	4,162	4,138	3,773	365	10%	-24	-1%	137	136	115	21	18%	-1	-1%	10	16	8	8	101%	6	60%	4,309	4,290	3,897	393	10%	-19	0%	
Seniors	5,118	4,883	5,760	-877	-15%	-235	-5%	201	197	222	-25	-11%	-4	-2%	14	14	12	2	12%	0	0%	5,333	5,094	5,994	-900	-15%	-239	-4%	
PostBac	13	9	26	-17	-66%	-4	-31%	1	1	2	-1	-46%	0	0%	0	0	1	-1	-100%	0	-	14	10	29	-19	-66%	-4	-29%	
PostBac Cr	267	225	328	-103	-31%	-42	-16%	0	0	0	0	-	0	-	0	0	0	0	-	0	-	267	225	328	-103	-31%	-42	-16%	
Masters	1,007	1,051	1,305	-254	-19%	44	4%	89	64	138	-74	-54%	-25	-28%	12	13	9	4	43%	1	8%	1,108	1,128	1,453	-325	-22%	20	2%	
Doctoral	16	39	60	-21	-35%	23	144%	0	0	0	0	-100%	0	-	0	0	0	0	-	0	-	16	39	61	-22	-36%	23	144%	
Return fr Absence	4	1	8	-7	-88%	3	-75%	0	0	3	-3	-100%	0	-	0	0	0	0	-	0	-	4	1	11	-10	-91%	-3	-75%	
Transitory	1	1	70	-69	-99%	0	0%	13	1	20	-19	-95%	-12	-92%	10	1	12	-11	-92%	-9	-90%	24	3	102	-99	-97%	-21	-88%	
<b>Total</b>	15,401	14,975	16,335	-1,360	-8%	-426	-3%	552	485	655	-170	-26%	-67	-12%	55	50	51	-1	-1%	-5	-9%	16,008	15,510	17,041	-1,531	-9%	-498	-3%	
<b>Total Headcount</b>	15,436	15,019	16,423	-1,404	-9%	-417	-3%	559	491	720	-229	-32%	-68	-12%	55	52	52	0	-1%	-3	-5%	16,050	15,562	17,196	-1,634	-10%	-488	-3%	
<b>FTES All Students</b>																													
FT Freshmen	0.00	0.00	3.54	-3.54	-100%	0.00	-	0.00	0.00	18.46	-18.46	-100%	0.00	-	0.00	0.00	0.43	-0.43	-100%	0	-	0.00	0.00	22.43	-22.43	-100%	0.00	-	
Freshmen	2,226.13	2,250.53	2,258.14	-7.61	0%	24.40	1%	28.40	17.80	65.93	-48.13	-73%	-10.60	-37%	3.73	2.20	1.94	0.26	14%	-2	-41%	2,258.26	2,270.53	2,326.01	-55.48	-2%	12.27	1%	
Sophomores	2,194.00	2,001.87	2,168.80	-166.93	-8%	-192.13	-9%	68.60	55.00	82.73	-27.73	-34%	-13.60	-20%	4.87	4.07	4.84	-0.77	-16%	-1	-16%	2,267.47	2,060.94	2,256.37	-195.43	-9%	-206.53	-9%	
Juniors	3,805.67	3,802.73	3,341.82	460.91	14%	-2.94	0%	127.53	120.47	113.46	7.01	6%	-7.06	-6%	9.13	15.87	6.78	9.09	134%	7	74%	3,942.33	3,939.07	3,462.06	477.01	14%	-3.26	0%	
Seniors	4,449.07	4,217.80	5,093.87	-876.07	-17%	-231.27	-5%	185.86	169.67	224.25	-54.58	-24%	-16.19	-9%	12.60	10.87	10.65	0.22	2%	-2	-14%	4,647.53	4,398.34	5,328.77	-930.43	-17%	-249.19	-5%	
PostBac	9.40	6.53	23.38	-16.85	-72%	-2.87	-31%	0.93	0.80	3.41	-2.61	-77%	-0.13	-14%	0.00	0.00	1.29	-1.29	-100%	0	-	10.33	7.33	28.08	-20.75	-74%	-3.00	-29%	
PostBac Cr	232.87	164.27	307.14	-142.87	-47%	-68.60	-29%	0.00	0.00	0.00	0.00	-	0.00	-	0.00	0.00	0.00	0.00	-	0	-	232.87	164.27	307.14	-142.87	-47%	-68.60	-29%	
Masters	787.67	826.33	1,203.63	-377.30	-31%	38.66	5%	74.50	50.25	153.53	-103.28	-67%	-24.25	-33%	8.67	10.17	8.50	1.67	20%	2	17%	870.84	886.75	1,365.66	-478.91	-35%	15.91	2%	
Doctoral	12.00	25.25	53.14	-27.89	-52%	13.25	110%	0.00	0.00	0.40	-0.40	-100%	0.00	-	0.00	0.00	0.00	0.00	-	0	-	12.00	25.25	53.54	-28.29	-53%	13.25	110%	
Return fr Absence	2.47	0.87	7.07	-6.20	-88%	-1.60	-65%	0.00	0.00	2.83	-2.83	-100%	0.00	-	0.00	0.00	0.00	0.00	-	0	-	2.47	0.87	9.91	-9.04	-91%	-1.60	-65%	
Transitory	0.27	0.27	61.90	-61.63	-100%	0.00	0%	10.80	0.80	19.98	-19.18	-96%	-10.00	-93%	8.80	0.87	10.24	-9.37	-92%	-8	-90%	19.87	1.94	92.12	-90.18	-98%	-17.93	-90%	
<b>Total FTES</b>	13,719.55	13,296.45	14,522.42	-1,225.97	-8%	-423.10	-3%	496.62	414.79	684.99	-270.20	-39%	-81.83	-16%	47.80	44.05	44.67	-0.62	-1%	-4	-8%	14,263.97	13,755.29	15,252.08	-1,496.79	-10%	-508.68	-4%	
<b>Mean Unit Load</b>																													
FT Freshmen	-	-	13.26	-	-	-	-	-	-	14.20	-	-	-	-	-	-	12.80	-	-	-	-	-	-	14.02	-	-	-	-	
Freshmen	13.85	13.99	13.26	0.73	5%	0.14	1.0%	13.00	12.68	14.38	-1.70	-12%	-0.32	-2.4%	13.43	15.35	12.80	2.55	20%	1.93	14.3%	13.83	13.98	13.30	0.68	5%	0.15	1.1%	
Sophomores	13.70	13.56	13.26	0.29	2%	-0.14	-1.1%	12.55	12.50	14.25	-1.75	-12%	-0.05	-0.4%	14.61	15.26	12.80	2.46	19%	0.65	4.5%	13.66	13.53	13.30	0.23	2%	-0.14	-1.0%	
Juniors	13.71	13.75	13.26	0.49	4%	0.04	0.3%	13.96	13.19	14.26	-1.07	-7%	-0.77	-5.5%	13.70	14.00	12.80	1.20	9%	0.31	2.2%	13.72	13.73	13.29	0.44	3%	0.01	0.1%	
Seniors	13.03	12.96	13.26	-0.31	-2%	-0.08	-0.6%	13.61	12.92	14.24	-1.32	-9%	-0.69	-5.1%	13.50	11.65	12.80	-1.16	-9%	-1.85	-13.7%	13.06	12.95	13.30	-0.35	-3%	-0.11	-0.8%	
PostBac	10.07	9.27	13.26	-3.99	-30%	-0.80	-7.9%	13.95	12.00	14.76	-2.76	-19%	-1.95	-14.0%	-	-	12.80	-	-	-	-	10.33	9.50	13.35	-3.85	-29%	-0.83	-8.0%	
PostBac Cr	12.94	10.81	13.26	-2.46	-19%	-2.13	-16.5%	-	-	-	-	-	-	-	-	-	-	-	-	-	-	12.94	10.81	13.26	-2.46	-19%	-2.13	-16.5%	
Masters	9.12	9.17	10.61	-1.44	-14%	0.05	0.5%	10.04	8.87	11.40	-2.53	-22%	-1.18	-11.7%	8.67	8.72	10.24	-1.52	-15%	0.05	0.5%	9.19	9.15	10.69	-1.54	-14%	-0.04	-0.5%	
Doctoral	9.00	7.77	10.61	-2.84	-27%	-1.23	-13.7%	-	-	11.33	-	-	-	-	-	-	-	-	-	-	-	9.00	7.77	10.62	-2.85	-27%	-1.23	-13.7%	
<b>Total</b>	13.18	13.11	13.03	0.08	1%	-0.07	-0.5%	12.93	12.36	13.62	-1.26	-9%	-0.56	-4.3%	12.56	12.12	12.32	-0.20	-2%	-0.44	-3.5%	13.17	13.08	13.06	0.03	0%	-0.08	-0.6%	
<b>FTES College of Disc</b>																													
A&L	2,975.95	2,776.47				-199.48	-7%	57.87	49.47				-8.40	-15%	9.27	10.67			1.40	15%	3,043.09	2,836.61					-206.48	-7%	
BPA	1,895.73	1,895.70				-0.03	0%	238.83	214.27				-24.56	-10%	11.87	11.07			-0.80	-7%	2,146.43	2,121.04					-25.39	-1%	
Educ	638.57	560.03				-78.54	-12%	18.33	10.80				-7.53	-41%	2.33	1.60			-0.73	-31%	659.23	572.43					-86.80	-13%	
NSci	4,036.47	4,051.73				15.26	0%	112.87	91.95				-20.92	-19%	11.67	11.27			-0.40	-3%	4,161.01	4,154.95					-6.06	0%	
SBS	4,142.62	3,967.92				-174.70	-4%	68.73	48.30				-20.43	-30%	12.67	9.43			-3.24	-26%	4,224.02	4,025.65					-198.37	-5%	
UNV	30.20	44.60				14.40	48%	0.00	0.00				0.00	0%	0.00	0.00			0.00	0%	30.20	44.60					14.40	48%	
<b>Total</b>	13,719.54	13,296.45				-423.09	-3%	496.63	414.79				-81.84	-16%	47.81	44.04													





Comparing 2/26/2018 to 2/25/2019 56 Days to Spring 2019 Census on: 4/22/2019

	Resident							Non-Resident Foreign					Non-Resident USA					Total											
	2018	2019	Trgt	Trgt Δ	Trgt % Δ	N Δ	% Δ	2018	2019	Trgt	Trgt Δ	Trgt % Δ	N Δ	% Δ	2018	2019	Trgt	Trgt Δ	Trgt % Δ	N Δ	% Δ	2018	2019	Trgt	Trgt Δ	Trgt % Δ	N Δ	% Δ	
<b>New Students</b>																													
FT Freshmen	0	1	4	-3	-75%	1	-	0	0	20	-20	-100%	0	-	0	0	1	-1	-100%	0	-	0	1	24	-23	-96%	1	-	
LD Transfer	0	0	2	-2	-100%	0	-	0	0	3	-3	-100%	0	-	0	0	0	0	-	0	-	0	0	5	-5	-100%	0	-	
UD Transfer	2	10	7	3	43%	8	400%	0	1	18	-17	-94%	1	-	0	1	0	1	-	1	-	2	12	25	-13	-52%	10	500%	
PostBac	0	1	0	1	-	-	-	0	0	2	-2	-100%	0	-	0	0	0	0	-100%	0	-	0	1	2	-1	-50%	1	-	
PostBac Cr	2	1	19	-18	-95%	-1	-50%	0	0	0	0	-	0	-	0	0	0	0	-	0	-	2	1	19	-18	-95%	-1	-50%	
Masters	24	28	56	-28	-50%	4	17%	0	3	23	-20	-87%	3	-	0	0	1	-1	-100%	0	-	24	31	80	-49	-61%	7	29%	
Doctoral	0	0	0	0	-	0	-	0	0	0	0	-	0	-	0	0	0	0	-	0	-	0	0	0	0	0	0	-	
<b>Total</b>	28	41	88	-47	-53%	13	46%	0	4	65	-61	-94%	4	-	0	1	2	-1	-43%	1	-	28	46	155	-109	-70%	18	64%	
<b>Continue/Return</b>																													
Freshmen	855	982	2,552	-1,570	-62%	127	15%	4	6	70	-64	-91%	2	50%	2	2	2	0	-12%	0	0%	861	990	2,624	-1,634	-62%	129	15%	
Sophomores	1,116	977	2,453	-1,476	-60%	-139	-12%	32	32	84	-52	-62%	0	0%	4	4	6	-2	-30%	0	0%	1,152	1,013	2,542	-1,529	-60%	-139	-12%	
Juniors	4,050	4,047	3,773	274	7%	-3	0%	131	136	115	21	18%	5	4%	10	15	8	7	89%	5	50%	4,191	4,198	3,897	301	8%	7	0%	
Seniors	5,071	4,823	5,760	-937	-16%	-248	-5%	198	197	222	-25	-11%	-1	-1%	14	14	12	2	12%	0	0%	5,283	5,034	5,994	-960	-16%	-249	-5%	
PostBac	10	9	26	-17	-66%	-1	-10%	0	1	0	0	-	0	0%	0	0	1	-1	-100%	0	-	11	10	29	-19	-66%	-1	-9%	
PostBac Cr	248	207	328	-121	-37%	-41	-17%	0	0	0	0	-	0	-	0	0	0	0	-	0	-	248	207	328	-121	-37%	-41	-17%	
Masters	951	985	1,305	-320	-25%	34	4%	85	62	138	-76	-55%	-23	-27%	12	11	9	2	21%	-1	-8%	1,048	1,058	1,453	-395	-27%	10	1%	
Doctoral	0	18	60	-42	-70%	18	-	0	0	0	0	-	0	-	0	0	0	0	-	0	-	0	18	61	-43	-70%	18	-	
Return fr Absence	3	0	8	-8	-100%	0	-100%	0	0	3	-3	-100%	0	-	0	0	0	0	-	0	-	3	0	11	-11	-100%	-3	-100%	
Transitory	1	1	70	-69	-99%	0	0%	12	1	20	-19	-95%	-11	-92%	10	1	12	-11	-92%	-9	-90%	23	3	102	-99	-97%	-20	-87%	
<b>Total</b>	12,305	12,049	16,335	-4,286	-26%	-256	-2%	463	435	655	-220	-34%	-28	-6%	52	47	51	-4	-8%	-5	-10%	12,820	12,531	17,041	-4,510	-26%	-289	-2%	
<b>Total Headcount</b>	12,333	12,090	16,423	-4,333	-26%	-243	-2%	463	439	720	-281	-39%	-24	-5%	52	48	52	-4	-8%	-4	-8%	12,848	12,577	17,196	-4,619	-27%	-271	-2%	
<b>FTES All Students</b>																													
FT Freshmen	0.00	0.87	3.54	-2.67	-75%	0.87	-	0.00	0.00	18.46	-18.46	-100%	0.00	-	0.00	0.00	0.43	-0.43	-100%	0	-	0.00	0.87	22.43	-21.56	-96%	0.87	-	
Freshmen	838.46	977.40	2,258.14	-1,280.74	-57%	138.94	17%	4.20	6.00	65.93	-59.93	-91%	1.80	43%	2.13	2.20	1.94	0.26	14%	0	3%	844.79	985.60	2,326.01	-1,340.41	-58%	140.81	17%	
Sophomores	1,053.13	920.07	2,168.80	-1,248.73	-58%	-133.06	-13%	28.27	28.80	82.73	-53.93	-65%	0.53	2%	3.87	4.07	4.84	-0.77	-16%	0	5%	1,085.27	952.94	2,256.37	-1,340.41	-58%	-132.33	-12%	
Juniors	3,694.20	3,702.33	3,341.82	360.51	11%	8.13	0%	119.40	115.67	113.46	2.21	2%	-3.73	-3%	8.87	15.33	6.78	8.55	126%	6	73%	3,822.47	3,833.33	3,462.06	371.27	11%	10.86	0%	
Seniors	4,390.94	4,152.40	5,093.87	-941.47	-18%	-238.54	-5%	178.60	168.73	224.25	-55.52	-25%	-9.87	-6%	12.60	10.87	10.65	0.22	2%	-2	-14%	4,582.14	4,332.00	5,328.77	-996.77	-19%	-250.14	-5%	
PostBac	6.80	6.80	23.38	-16.58	-71%	0.00	0%	0.93	0.53	3.41	-2.88	-84%	-0.40	-43%	0.00	0.00	1.29	-1.29	-100%	0	-	7.73	7.33	28.08	-20.75	-74%	-0.40	-5%	
PostBac Cr	216.07	149.87	307.14	-157.27	-51%	-66.20	-31%	0.00	0.00	0.00	0.00	-	0.00	-	0.00	0.00	0.00	0.00	-	0	-	216.07	149.87	307.14	-157.27	-51%	-66.20	-31%	
Masters	732.33	769.25	1,203.63	-434.38	-36%	36.92	5%	69.83	48.75	153.53	-104.78	-68%	-21.08	-30%	8.33	7.67	8.50	-0.83	-10%	-1	-8%	810.49	825.67	1,365.66	-539.99	-40%	15.18	2%	
Doctoral	0.00	7.17	53.14	-45.97	-87%	7.17	-	0.00	0.00	0.40	-0.40	-100%	0.00	-	0.00	0.00	0.00	0.00	-	0	-	0.00	7.17	53.54	-46.37	-87%	7.17	-	
Return fr Absence	2.13	0.00	7.07	-7.07	-100%	-2.13	-100%	0.00	0.00	2.83	-2.83	-100%	0.00	-	0.00	0.00	0.00	0.00	-	0	-	2.13	0.00	9.91	-9.91	-100%	-2.13	-100%	
Transitory	0.27	0.27	61.90	-61.63	-100%	0.00	0%	10.13	0.80	19.98	-19.18	-96%	-9.33	-92%	8.27	0.87	10.24	-9.37	-92%	-7	-89%	18.67	1.94	92.12	-90.18	-98%	-16.73	-90%	
<b>Total FTES</b>	10,934.33	10,686.43	14,522.42	-3,835.99	-26%	-247.90	-2%	411.36	369.28	684.99	-315.71	-46%	-42.08	-10%	44.07	41.01	44.67	-3.66	-8%	-3	-7%	11,389.76	11,096.72	15,252.08	-4,155.36	-27%	-293.04	-3%	
<b>Mean Unit Load</b>																													
FT Freshmen	-	13.05	13.26	-0.21	-2%	-	-	-	-	14.20	-	-	-	-	-	-	12.80	-	-	-	-	-	13.05	13.05	14.02	-0.97	-7%	-	-
Freshmen	14.70	14.93	13.26	1.67	13%	0.23	1.6%	13.27	14.57	14.38	0.19	1%	1.30	9.8%	13.00	15.35	12.80	2.55	20%	2.35	18.1%	14.65	14.93	13.30	1.63	12%	0.28	1.9%	
Sophomores	14.15	14.13	13.26	0.86	6%	-0.03	-0.2%	13.25	13.50	14.25	-0.75	-5%	0.25	1.9%	14.51	15.26	12.80	2.46	19%	0.75	5.2%	14.13	14.11	13.30	0.81	6%	-0.02	-0.1%	
Juniors	13.68	13.69	13.26	0.42	3%	0.01	0.1%	13.67	12.66	14.26	-1.59	-11%	-1.01	-7.4%	13.31	14.37	12.80	1.57	12%	1.07	8.0%	13.68	13.66	13.29	0.36	3%	-0.02	-0.1%	
Seniors	12.98	12.91	13.26	-0.35	-3%	-0.07	-0.5%	13.54	12.85	14.24	-1.39	-10%	-0.70	-5.1%	13.50	11.65	12.80	-1.16	-9%	-1.85	-13.7%	13.01	12.91	13.30	-0.39	-3%	-0.10	-0.8%	
PostBac	10.20	9.64	13.26	-3.62	-27%	-0.56	-5.5%	13.95	7.95	14.76	-6.81	-46%	-6.00	-43.0%	-	-	12.80	-	-	-	-	10.54	9.50	13.35	-3.85	-29%	-1.04	-9.9%	
PostBac Cr	12.96	10.81	13.26	-2.46	-19%	-2.16	-16.6%	-	-	-	-	-	-	-	-	-	-	-	-	-	-	12.96	10.81	13.26	-2.46	-19%	-2.16	-16.6%	
Masters	9.02	9.11	10.61	-1.50	-14%	0.09	1.0%	9.86	9.00	11.40	-2.40	-21%	-0.86	-8.7%	8.33	8.37	10.24	-1.87	-18%	0.04	0.4%	9.08	9.10	10.69	-1.59	-15%	0.02	0.2%	
Doctoral	-	4.78	10.61	-5.83	-55%	-	-	-	-	11.33	-	-	-	-	-	-	-	-	-	-	-	-	4.78	10.62	-5.84	-55%	-	-	-
<b>Total</b>	13.12	13.07	13.03	0.03	0%	-0.05	-0.4%	12.87	12.28	13.62	-1.34	-10%	-0.59	-4.6%	12.23	12.34	12.32	0.02	0%	0.10	0.9%	13.11	13.04	13.06	-0.02	0%	-0.07	-0.5%	
<b>FTES College of Disc</b>																													
A&L	2,045.77	1,990.47				-55.30	-3%	42.13	38.67				-3.46	-8%	8.20	9.47				1.27	15%	2,096.10	2,038.61				-57.49	-3%	
BPA	1,729.07	1,735.30				6.23	0%	219.63	203.33				-16.30	-7%	11.47	9.73				-1.74	-15%	1,960.17	1,948.36				-11.81	-1%	
Educ	583.23	504.82				-78.41	-13%	16.33	9.67				-6.66	-41%	2.33	1.60				-0.73	-31%	601.89	516.09				-85.80	-14%	
NSci	3,257.40	3,241.88				-15.52	0%	82.00	78.88				-3.12	-4%	11.33	11.27				-0.06	-1%	3,350.73	3,332.03				-18.70	-1%	
SBS	3,289.07	3,172.08				-116.99	-4%	51.27	38.73				-12.54	-24%	10.73	8.93				-1.80	-17%	3,351.07	3,219.74				-131.33	-4%	
UNV	29.80	41.87				12.07	41%	0.00	0.00				0.00	0%	0.00	0.00				0.00	0%	29.80	41.87				12.07	41%	
<b>Total</b>	10,934.34	10,686.42				-247.92	-2%	411.36	369.28				-42.08	-10%	44.06	41.00				-3.06									

Comparing 2/23/2018 to 2/22/2019 59 Days to Spring 2019 Census on: 4/22/2019

	Resident							Non-Resident Foreign					Non-Resident USA					Total											
	2018	2019	Trgt	Trgt Δ	Trgt % Δ	N Δ	% Δ	2018	2019	Trgt	Trgt Δ	Trgt % Δ	N Δ	% Δ	2018	2019	Trgt	Trgt Δ	Trgt % Δ	N Δ	% Δ	2018	2019	Trgt	Trgt Δ	Trgt % Δ	N Δ	% Δ	
<b>New Students</b>																													
FT Freshmen	0	1	4	-3	-75%	1	-	0	0	20	-20	-100%	0	-	0	0	1	-1	-100%	0	-	0	1	24	-23	-96%	1	-	
LD Transfer	0	0	2	-2	-100%	0	-	0	0	3	-3	-100%	0	-	0	0	0	0	-	0	-	0	0	5	-5	-100%	0	-	
UD Transfer	2	10	7	3	43%	8	400%	0	0	18	-18	-100%	0	-	0	1	0	1	-	1	-	2	11	25	-14	-56%	9	450%	
PostBac	0	1	0	1	-	1	-	0	0	2	-2	-100%	0	-	0	0	0	0	-100%	0	-	0	1	2	-1	-50%	1	-	
PostBac Cr	2	0	19	-19	-100%	-2	-100%	0	0	0	0	-	0	-	0	0	0	0	-	0	-	2	0	19	-19	-100%	-2	-100%	
Masters	22	27	56	-29	-52%	3	23%	0	3	23	-20	-87%	3	-	0	0	1	-1	-100%	0	-	22	30	80	-50	-63%	8	36%	
Doctoral	0	0	0	0	-	0	-	0	0	0	0	-	0	-	0	0	0	0	-	0	-	0	0	0	0	0	0	-	
<b>Total</b>	26	39	88	-49	-56%	13	50%	0	3	65	-62	-95%	3	-	0	1	2	-1	-43%	1	-	26	43	155	-112	-72%	17	65%	
<b>Continue/Return</b>																													
Freshmen	843	970	2,552	-1,582	-62%	127	15%	4	6	70	-64	-91%	2	50%	2	2	2	0	-12%	0	0%	849	978	2,624	-1,646	-63%	129	15%	
Sophomores	1,094	954	2,453	-1,499	-61%	-140	-13%	29	31	84	-53	-63%	2	7%	4	4	6	-2	-30%	0	0%	1,127	989	2,542	-1,553	-61%	-138	-12%	
Juniors	3,982	3,968	3,773	195	5%	-14	0%	129	134	115	19	16%	5	4%	9	13	8	5	64%	4	44%	4,120	4,115	3,897	218	6%	-5	0%	
Seniors	5,046	4,785	5,760	-975	-17%	-261	-5%	197	197	222	-25	-11%	0	0%	14	14	12	2	12%	0	0%	5,257	4,996	5,994	-998	-17%	-261	-5%	
PostBac	10	9	26	-17	-66%	-1	-10%	1	1	2	-1	-46%	0	0%	0	0	1	-1	-100%	0	-	11	10	29	-19	-66%	-1	-9%	
PostBac Cr	228	187	328	-141	-43%	-41	-18%	0	0	0	0	-	0	-	0	0	0	0	-	0	-	228	187	328	-141	-43%	-41	-18%	
Masters	920	962	1,305	-343	-26%	42	5%	82	61	138	-77	-56%	-21	-26%	12	11	9	2	21%	-1	-8%	1,014	1,034	1,453	-419	-29%	20	2%	
Doctoral	0	3	60	-57	-95%	3	-	0	0	0	0	-100%	0	-	0	0	0	0	-	0	-	0	3	61	-58	-95%	3	-	
Return fr Absence	3	0	8	-8	-100%	-3	-100%	0	0	3	-3	-100%	0	-	0	0	0	0	-	0	-	3	0	11	-11	-100%	-3	-100%	
Transitory	1	1	70	-69	-99%	0	0%	12	1	20	-19	-95%	-11	-92%	8	1	12	-11	-92%	-7	-88%	21	3	102	-99	-97%	-18	-86%	
<b>Total</b>	12,127	11,839	16,335	-4,496	-28%	-288	-2%	454	431	655	-224	-34%	-23	-5%	49	45	51	-6	-11%	-4	-8%	12,630	12,315	17,041	-4,726	-28%	-315	-2%	
<b>Total Headcount</b>	12,153	11,878	16,423	-4,545	-28%	-275	-2%	454	434	720	-286	-40%	-20	-4%	49	46	52	-6	-12%	-3	-6%	12,656	12,358	17,196	-4,838	-28%	-298	-2%	
<b>FTES All Students</b>																													
FT Freshmen	0.00	0.87	3.54	-2.67	-75%	0.87	-	0.00	0.00	18.46	-18.46	-100%	0.00	-	0.00	0.00	0.43	-0.43	-100%	0	-	0.00	0.87	22.43	-21.56	-96%	0.87	-	
Freshmen	826.40	966.40	2,258.14	-1,291.74	-57%	140.00	17%	4.20	6.00	65.93	-59.93	-91%	1.80	43%	2.13	2.20	1.94	0.26	14%	0	3%	832.73	974.60	2,326.01	-1,351.41	-58%	141.87	17%	
Sophomores	1,033.40	896.73	2,168.80	-1,272.07	-59%	-136.67	-13%	25.67	27.67	82.73	-55.06	-67%	2.00	8%	3.87	4.07	4.84	-0.77	-16%	0	5%	1,062.94	928.47	2,256.37	-1,327.90	-59%	-134.47	-13%	
Juniors	3,626.47	3,621.00	3,341.82	279.18	8%	-5.47	0%	117.67	112.60	113.46	-0.86	-1%	-5.07	-4%	7.93	13.07	6.78	6.29	93%	5	65%	3,752.07	3,746.67	3,462.06	284.61	8%	-5.40	0%	
Seniors	4,363.54	4,120.67	5,093.87	-973.20	-19%	-242.87	-6%	175.93	168.60	224.25	-55.65	-25%	-7.33	-4%	12.60	10.87	10.65	0.22	2%	-2	-14%	4,552.07	4,300.14	5,328.77	-1,028.63	-19%	-251.93	-6%	
PostBac	6.80	6.80	23.38	-16.58	-71%	0.00	0%	0.93	0.53	3.41	-2.88	-84%	-0.40	-43%	0.00	0.00	1.29	-0.29	-100%	0	-	7.73	7.33	28.08	-20.75	-74%	-0.40	-5%	
PostBac Cr	200.87	135.27	307.14	-171.87	-56%	-65.60	-33%	0.00	0.00	0.00	0.00	-	0.00	-	0.00	0.00	0.00	0.00	-	0	-	200.87	135.27	307.14	-171.87	-56%	-65.60	-33%	
Masters	707.25	754.00	1,203.63	-449.63	-37%	46.75	7%	67.50	48.08	153.53	-105.45	-69%	-19.42	-29%	8.33	7.67	8.50	-0.83	-10%	-1	-8%	783.08	809.75	1,365.66	-555.91	-41%	26.67	3%	
Doctoral	0.00	1.50	53.14	-51.64	-97%	1.50	-	0.00	0.00	0.40	-0.40	-100%	0.00	-	0.00	0.00	0.00	0.00	-	0	-	0.00	1.50	53.54	-52.04	-97%	1.50	-	
Return fr Absence	2.13	0.00	7.07	-7.07	-100%	-2.13	-100%	0.00	0.00	2.83	-2.83	-100%	0.00	-	0.00	0.00	0.00	0.00	-	0	-	2.13	0.00	9.91	-9.91	-100%	-2.13	-100%	
Transitory	0.27	0.27	61.90	-61.63	-100%	0.00	0%	10.13	0.80	19.98	-19.18	-96%	-9.33	-92%	6.87	0.87	10.24	-9.37	-92%	-6	-87%	17.27	1.94	92.12	-90.18	-98%	-15.33	-89%	
<b>Total FTES</b>	10,767.13	10,503.51	14,522.42	-4,018.91	-28%	-263.62	-2%	402.03	364.28	684.99	-320.71	-47%	-37.75	-9%	41.73	38.75	44.67	-5.92	-13%	-3	-7%	11,210.89	10,906.54	15,252.08	-4,345.54	-28%	-304.35	-3%	
<b>Mean Unit Load</b>																													
FT Freshmen	-	13.05	13.26	-0.21	-2%	-	-	-	-	14.20	-	-	-	-	-	-	12.80	-	-	-	-	-	13.05	13.05	14.02	-0.97	-7%	-	-
Freshmen	14.69	14.94	13.26	1.68	13%	0.25	1.7%	13.27	14.57	14.38	0.19	1%	1.30	9.8%	13.50	15.35	12.80	2.55	20%	1.85	13.7%	14.65	14.94	13.30	1.64	12%	0.29	2.0%	
Sophomores	14.17	14.10	13.26	0.84	6%	-0.07	-0.5%	13.28	13.39	14.25	-0.87	-6%	0.11	0.8%	14.51	15.26	12.80	2.46	19%	0.75	5.2%	14.15	14.08	13.30	0.78	6%	-0.07	-0.5%	
Juniors	13.66	13.65	13.26	0.39	3%	0.00	0.0%	13.68	12.60	14.26	-1.65	-12%	-1.08	-7.9%	13.22	14.00	12.80	1.20	9%	0.79	6.0%	13.66	13.62	13.29	0.33	2%	-0.04	-0.3%	
Seniors	12.97	12.92	13.26	-0.35	-3%	-0.05	-0.4%	13.41	12.84	14.24	-1.40	-10%	-0.57	-4.3%	13.50	11.65	12.80	-1.16	-9%	-1.85	-13.7%	12.98	12.91	13.30	-0.39	-3%	-0.07	-0.6%	
PostBac	10.20	9.64	13.26	-3.62	-27%	-0.56	-5.5%	13.95	7.95	14.76	-6.81	-46%	-6.00	-43.0%	-	-	12.80	-	-	-	-	10.54	9.50	13.35	-3.85	-29%	-1.04	-9.9%	
PostBac Cr	13.10	10.85	13.26	-2.41	-18%	-2.25	-17.2%	-	-	-	-	-	-	-	-	-	-	-	-	-	-	13.10	10.85	13.26	-2.41	-18%	-2.25	-17.2%	
Masters	9.02	9.15	10.61	-1.46	-14%	0.13	1.5%	9.88	9.02	11.40	-2.39	-21%	-0.86	-8.7%	8.33	8.37	10.24	-1.87	-18%	0.04	0.4%	9.08	9.13	10.69	-1.56	-15%	0.06	0.6%	
Doctoral	-	6.00	10.61	-4.61	-43%	-	-	-	-	11.33	-	-	-	-	-	-	-	-	-	-	-	-	6.00	10.62	-4.62	-43%	-	-	
<b>Total</b>	13.11	13.07	13.03	0.04	0%	-0.04	-0.3%	12.84	12.26	13.62	-1.36	-10%	-0.58	-4.5%	12.26	12.14	12.32	-0.18	-1%	-0.13	-1.1%	13.10	13.04	13.06	-0.01	0%	-0.06	-0.5%	
<b>FTES College of Disc</b>																													
A&L	2,005.07	1,947.43				-57.64	-3%	41.87	37.73				-4.14	-10%	6.80	8.40				1.60	24%	2,053.74	1,993.56				-60.18	-3%	
BPA	1,706.20	1,716.97				10.77	1%	218.83	202.27				-16.56	-8%	11.07	9.73				-1.34	-12%	1,936.10	1,928.97				-7.13	0%	
Educ	562.77	477.38				-85.39	-15%	13.67	9.67				-4.00	-29%	2.33	1.60				-0.73	-31%	578.77	488.65				-90.12	-16%	
NSci	3,219.67	3,201.85				-17.82	-1%	77.73	76.68				-1.05	-1%	11.60	10.33				-1.27	-11%	3,309.00	3,288.86				-20.14	-1%	
SBS	3,244.02	3,118.00				-126.02	-4%	49.93	37.93				-12.00	-24%	9.93	8.67				-1.26	-13%	3,303.88	3,164.60				-139.28	-4%	
UNV	29.40	41.87				12.47	42%	0.00	0.00				0.00	0%	0.00	0.00				0.00	0%	29.40	41.87				12.47	42%	
<b>Total</b>	10,767.13	10,503.50				-263.63	-2%	402.03	364.28				-37.75	-9%	41.73	38.73				-3.00	-7%	11,210.89							









Comparing 2/19/2018 to 2/18/2019		63 Days to Spring 2019 Census on: 4/22/2019																											
		Resident						Non-Resident Foreign						Non-Resident USA						Total									
		2018	2019	Trgt	Trgt Δ	Trgt % Δ	N Δ	% Δ	2018	2019	Trgt	Trgt Δ	Trgt % Δ	N Δ	% Δ	2018	2019	Trgt	Trgt Δ	Trgt % Δ	N Δ	% Δ	2018	2019	Trgt	Trgt Δ	Trgt % Δ	N Δ	% Δ
<b>New Students</b>																													
FT Freshmen	0	1	4	-3	-75%	1	-	0	0	20	-20	-100%	0	-	0	0	1	-1	-100%	0	-	0	1	24	-23	-96%	1	-	
LD Transfer	0	0	2	-2	-100%	0	-	0	0	3	-3	-100%	0	-	0	0	0	0	-	-	0	-	0	5	-5	-100%	0	-	
UD Transfer	2	6	7	-1	-14%	4	200%	0	0	18	-18	-100%	0	-	0	1	0	1	-	-	1	-	2	7	25	-18	-72%	5	250%
PostBac	0	0	0	0	-	0	-	0	0	2	-2	-100%	0	-	0	0	0	0	-100%	0	-	0	0	2	-2	-100%	0	-	
PostBac Cr	0	0	19	-19	-100%	0	-	0	0	0	0	-	0	-	0	0	0	0	-	-	0	-	0	0	19	-19	-100%	0	-
Masters	14	22	56	-34	-61%	8	57%	0	2	23	-21	-91%	2	-	0	0	1	-1	-100%	0	-	14	24	80	-56	-70%	10	71%	
Doctoral	0	0	0	0	-	0	-	0	0	0	0	-	0	-	0	0	0	0	-	-	0	-	0	0	0	0	-	0	-
<b>Total</b>	<b>16</b>	<b>29</b>	<b>88</b>	<b>-59</b>	<b>-67%</b>	<b>13</b>	<b>81%</b>	<b>0</b>	<b>2</b>	<b>65</b>	<b>-63</b>	<b>-97%</b>	<b>2</b>	<b>-</b>	<b>0</b>	<b>1</b>	<b>2</b>	<b>-1</b>	<b>-43%</b>	<b>1</b>	<b>-</b>	<b>16</b>	<b>32</b>	<b>155</b>	<b>-123</b>	<b>-79%</b>	<b>16</b>	<b>100%</b>	
<b>Continue/Return</b>																													
Freshmen	807	911	2,552	-1,641	-64%	104	13%	4	6	70	-64	-91%	2	50%	2	2	2	0	-12%	0	0%	813	919	2,624	-1,705	-65%	106	13%	
Sophomores	642	566	2,453	-1,887	-77%	-76	-12%	8	9	84	-75	-89%	1	13%	2	3	6	-3	-47%	1	50%	652	578	2,542	-1,964	-77%	-74	-11%	
Juniors	1,632	1,705	3,773	-2,068	-55%	73	4%	62	60	115	-55	-48%	-2	-3%	5	10	8	-3	-26%	5	100%	1,699	1,775	3,897	-2,122	-54%	76	4%	
Seniors	4,865	4,590	5,760	-1,170	-20%	-275	-6%	191	187	222	-35	-16%	-4	-2%	13	12	12	0	-4%	-1	-8%	5,069	4,789	5,994	-1,205	-20%	-280	-6%	
PostBac	0	1	26	-25	-96%	1	-	0	0	0	-2	-100%	0	-	0	0	1	-1	-100%	0	-	0	1	29	-28	-97%	1	-	
PostBac Cr	0	5	328	-323	-98%	3	-38%	0	0	0	0	-	0	-	0	0	0	0	-	0	-	8	5	328	-323	-98%	-3	-38%	
Masters	761	814	1,305	-491	-38%	53	7%	64	52	138	-86	-62%	-12	-19%	10	10	9	1	10%	0	0%	835	876	1,453	-577	-40%	41	5%	
Doctoral	0	2	60	-58	-97%	2	-	0	0	0	0	-100%	0	-	0	0	0	0	-	0	-	0	2	61	-59	-97%	2	-	
Return fr Absence	1	0	8	-8	-100%	-1	-100%	0	0	3	-3	-100%	0	-	0	0	0	0	-	0	-	1	0	11	-11	-100%	-1	-100%	
Transitory	1	1	70	-69	-99%	0	0%	12	1	20	-19	-95%	-11	-92%	7	1	12	-11	-92%	-6	-86%	20	3	102	-99	-97%	-17	-85%	
<b>Total</b>	<b>8,717</b>	<b>8,595</b>	<b>16,335</b>	<b>-7,740</b>	<b>-47%</b>	<b>-122</b>	<b>-1%</b>	<b>341</b>	<b>315</b>	<b>655</b>	<b>-340</b>	<b>-52%</b>	<b>-26</b>	<b>-8%</b>	<b>39</b>	<b>38</b>	<b>51</b>	<b>-13</b>	<b>-25%</b>	<b>-1</b>	<b>-3%</b>	<b>9,097</b>	<b>8,948</b>	<b>17,041</b>	<b>-8,093</b>	<b>-47%</b>	<b>-149</b>	<b>-2%</b>	
<b>Total Headcount</b>	<b>8.733</b>	<b>8.624</b>	<b>16.423</b>	<b>-7.799</b>	<b>-47%</b>	<b>-1.09</b>	<b>-1%</b>	<b>341</b>	<b>317</b>	<b>720</b>	<b>-403</b>	<b>-56%</b>	<b>-24</b>	<b>-7%</b>	<b>39</b>	<b>39</b>	<b>52</b>	<b>-13</b>	<b>-25%</b>	<b>0</b>	<b>0%</b>	<b>9.113</b>	<b>8.980</b>	<b>17.196</b>	<b>-8.216</b>	<b>-48%</b>	<b>-133</b>	<b>-1%</b>	
<b>FTES All Students</b>																													
FT Freshmen	0.00	0.87	3.54	-2.67	-75%	0.87	-	0.00	0.00	18.46	-18.46	-100%	0.00	-	0.00	0.00	0.43	-0.43	-100%	0	-	0.00	0.87	22.43	-21.56	-96%	0.87	-	
Freshmen	785.06	905.00	2,258.14	-1,353.14	-60%	119.94	15%	4.20	6.00	65.93	-59.93	-91%	1.80	43%	2.13	2.20	1.94	0.26	14%	0	3%	791.39	913.20	2,326.01	-1,412.81	-61%	121.81	15%	
Sophomores	630.67	557.00	2,168.80	-1,611.80	-74%	-73.67	-12%	8.40	9.07	82.73	-73.66	-89%	0.67	8%	2.13	3.27	4.84	-1.57	-32%	1	54%	641.20	569.34	2,256.37	-1,687.03	-75%	-71.86	-11%	
Juniors	1,549.53	1,619.73	3,341.82	-1,722.09	-52%	70.20	5%	60.27	56.47	113.46	-56.99	-50%	-3.80	-6%	4.47	9.80	6.78	3.02	45%	5	119%	1,614.27	1,686.00	3,462.06	-1,776.06	-51%	71.73	4%	
Seniors	4,152.73	3,915.40	5,093.87	-1,178.47	-23%	-237.33	-6%	168.66	160.47	224.25	-63.78	-28%	-8.19	-5%	12.07	9.47	10.65	-1.18	-11%	-3	-22%	4,333.46	4,085.34	5,328.77	-1,243.43	-23%	-248.12	-6%	
PostBac	0.00	0.80	23.38	-22.58	-97%	0.80	-	0.00	0.00	3.41	-3.41	-100%	0.00	-	0.00	0.00	1.29	-1.29	-100%	0	-	0.00	0.80	28.08	-27.28	-97%	0.80	-	
PostBac Cr	7.00	3.33	307.14	-303.81	-99%	-3.67	-52%	0.00	0.00	0.00	0.00	-	0.00	-	0.00	0.00	0.00	0.00	-	0	-	7.00	3.33	307.14	-303.81	-99%	-3.67	-52%	
Masters	568.08	631.58	1,203.63	-572.05	-48%	63.50	11%	51.33	40.08	153.53	-113.45	-74%	-11.25	-22%	6.83	7.00	8.50	-1.50	-18%	0	2%	626.24	678.66	1,365.66	-687.00	-50%	52.42	8%	
Doctoral	0.00	1.17	53.14	-51.97	-98%	1.17	-	0.00	0.00	0.40	-0.40	-100%	0.00	-	0.00	0.00	0.00	0.00	-	0	-	0.00	1.17	53.54	-52.37	-98%	1.17	-	
Return fr Absence	1.00	0.00	7.07	-7.07	-100%	-1.00	-100%	0.00	0.00	2.83	-2.83	-100%	0.00	-	0.00	0.00	0.00	0.00	-	0	-	1.00	0.00	9.91	-9.91	-100%	-1.00	-100%	
Transitory	0.27	0.27	61.90	-61.63	-100%	0.00	0%	10.13	0.80	19.98	-19.18	-96%	-9.33	-92%	6.07	0.87	10.24	-9.37	-92%	-5	-86%	16.47	1.94	92.12	-90.18	-98%	-14.53	-88%	
<b>Total FTES</b>	<b>7,694.34</b>	<b>7,635.15</b>	<b>14,522.42</b>	<b>-6,887.27</b>	<b>-47%</b>	<b>-59.19</b>	<b>-1%</b>	<b>302.99</b>	<b>272.89</b>	<b>684.99</b>	<b>-412.10</b>	<b>-60%</b>	<b>-30.10</b>	<b>-10%</b>	<b>33.70</b>	<b>32.61</b>	<b>44.67</b>	<b>-12.06</b>	<b>-27%</b>	<b>-1</b>	<b>-3%</b>	<b>8,031.03</b>	<b>7,940.65</b>	<b>15,252.08</b>	<b>-7,311.43</b>	<b>-48%</b>	<b>-90.38</b>	<b>-1%</b>	
<b>Mean Unit Load</b>																													
FT Freshmen	-	13.05	13.26	-0.21	-2%	-	-	-	-	14.20	-	-	-	-	-	-	-	12.80	-	-	-	-	13.05	13.05	14.02	-0.97	-7%	-	-
Freshmen	14.58	14.90	13.26	1.64	12%	0.32	2.2%	13.27	14.57	14.38	0.19	1%	1.30	9.8%	13.67	15.35	12.80	2.55	20%	1.68	12.3%	14.55	14.90	13.30	1.60	12%	0.35	2.4%	
Sophomores	14.74	14.76	13.26	1.50	11%	0.03	0.2%	15.75	15.12	14.25	0.86	6%	-0.63	-4.0%	15.98	16.35	12.80	3.55	28%	0.37	2.3%	14.75	14.78	13.30	1.48	11%	0.02	0.2%	
Juniors	14.23	14.20	13.26	0.94	7%	-0.03	-0.2%	14.58	14.12	14.26	-0.14	-1%	-0.46	-3.2%	13.41	13.36	12.80	0.56	4%	-0.05	-0.3%	14.24	14.19	13.29	0.90	7%	-0.05	-0.4%	
Seniors	12.80	12.80	13.26	-0.47	-4%	-0.01	0.0%	13.26	12.87	14.24	-1.37	-10%	-0.39	-2.9%	13.93	11.84	12.80	-0.97	-8%	-2.09	-15.0%	12.82	12.80	13.30	-0.51	-4%	-0.03	-0.2%	
PostBac	-	8.03	13.26	-5.24	-39%	-	-	-	-	14.76	-	-	-	-	-	-	12.80	-	-	-	-	-	8.03	13.35	-5.33	-40%	-	-	
PostBac Cr	13.13	9.99	13.26	-3.27	-25%	-3.14	-23.9%	-	-	-	-	-	-	-	-	-	-	-	-	-	-	13.13	9.99	13.26	-3.27	-25%	-3.14	-23.9%	
Masters	8.80	9.07	10.61	-1.55	-15%	0.27	3.0%	9.62	8.91	11.40	-2.49	-22%	-0.72	-7.5%	8.20	8.40	10.24	-1.84	-18%	0.20	2.5%	8.86	9.05	10.69	-1.64	-15%	0.19	2.2%	
Doctoral	-	7.02	10.61	-3.59	-34%	-	-	-	-	11.33	-	-	-	-	-	-	-	-	-	-	-	-	7.02	10.62	-3.60	-34%	-	-	
<b>Total</b>	<b>13.02</b>	<b>13.06</b>	<b>13.03</b>	<b>0.03</b>	<b>0%</b>	<b>0.04</b>	<b>0.3%</b>	<b>12.88</b>	<b>12.53</b>	<b>13.62</b>	<b>-1.09</b>	<b>-8%</b>	<b>-0.34</b>	<b>-2.7%</b>	<b>12.44</b>	<b>12.00</b>	<b>12.32</b>	<b>-0.31</b>	<b>-3%</b>	<b>-0.43</b>	<b>-3.5%</b>	<b>13.01</b>	<b>13.04</b>	<b>13.06</b>	<b>-0.02</b>	<b>0%</b>	<b>0.02</b>	<b>0.2%</b>	
<b>FTES College of Disc</b>																													
A&L	1,408.53	1,388.17				-20.36	-1%	30.73	27.93				-2.80	-9%	4.87	8.13				3.26	67%	1,444.13	1,424.23				-19.90	-1%	
BPA	1,228.00	1,307.50				79.50	6%	178.20	166.47				-11.73	-7%	9.87	8.47				-1.40	-14%	1,416.07	1,482.44				66.37	5%	
Educ	319.20	285.47				-33.73	-11%	9.67	3.53				-6.14	-63%	2.33	1.60				-0.73	-31%	331.20	290.60				-40.60	-12%	
NSci	2,482.33	2,397.38				-84.95	-3%	53.93	54.62				0.69	1%	8.53	7.27				-1.26	-15%	2,544.79	2,459.27				-85.52	-3%	
SBS	2,228.82	2,217.77				-11.05	0%	30.47	20.33				-10.14	-33%	8.10	7.13				-0.97	-12%	2,267.39	2,245.23				-22.16	-1%	
UNV	27.47	38.87				11.40	41%	0.00	0.00				0.00	0%	0.00	0.00				0.00	0%	27.47	38.87				11.40	41%	
<b>Total</b>	<b>7,694.35</b>	<b>7,635.16</b>				<b>-59.19</b>	<b>-1%</b>	<b>303.00</b>	<b>272.88</b>				<b>-30.12</b>	<b>-10%</b>	<b>33.70</b>	<b>32.60</b>				<b>-1.10</b>	<b>-3%</b>	<b>8,031.05</b>	<b>7,940.64</b>				<b>-90.41</b>	<b>-1%</b>	
<b>FTES</b>																													
College Year	Summer	Fall</																											